

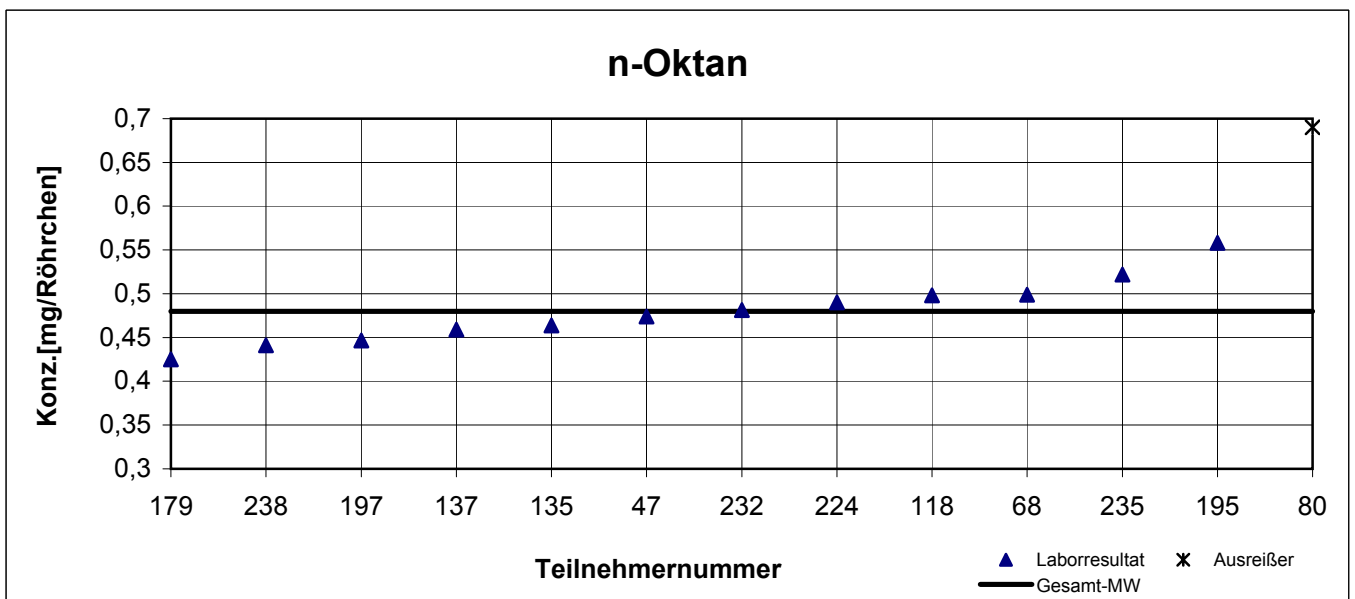
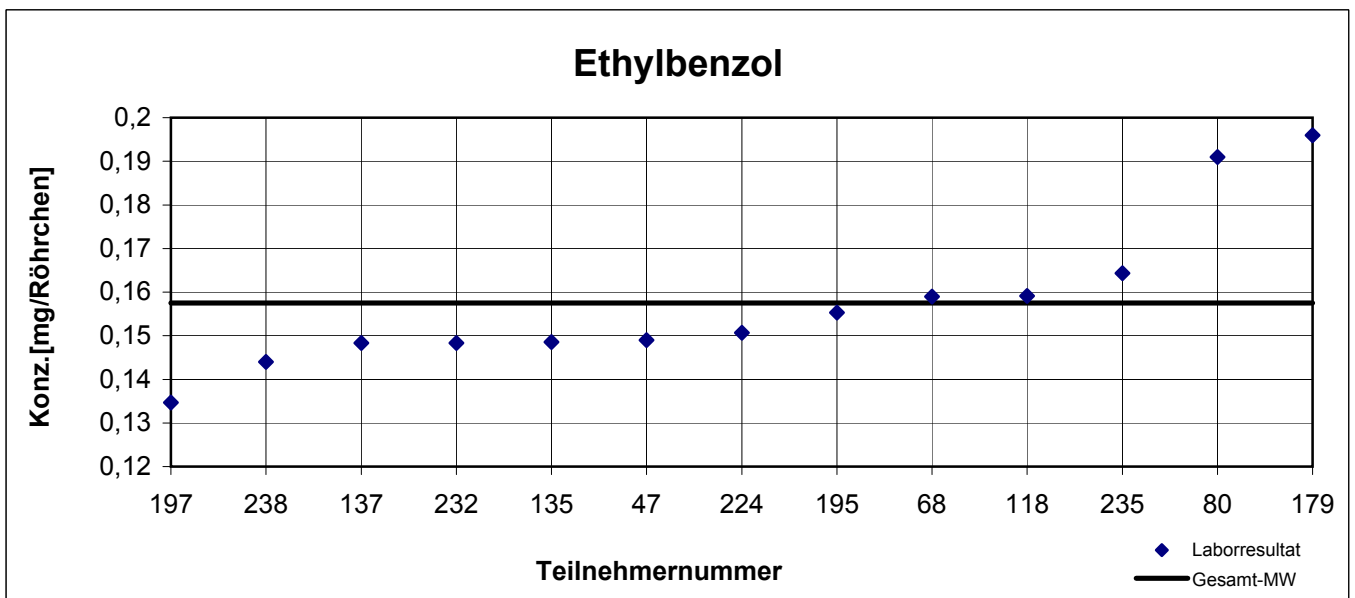
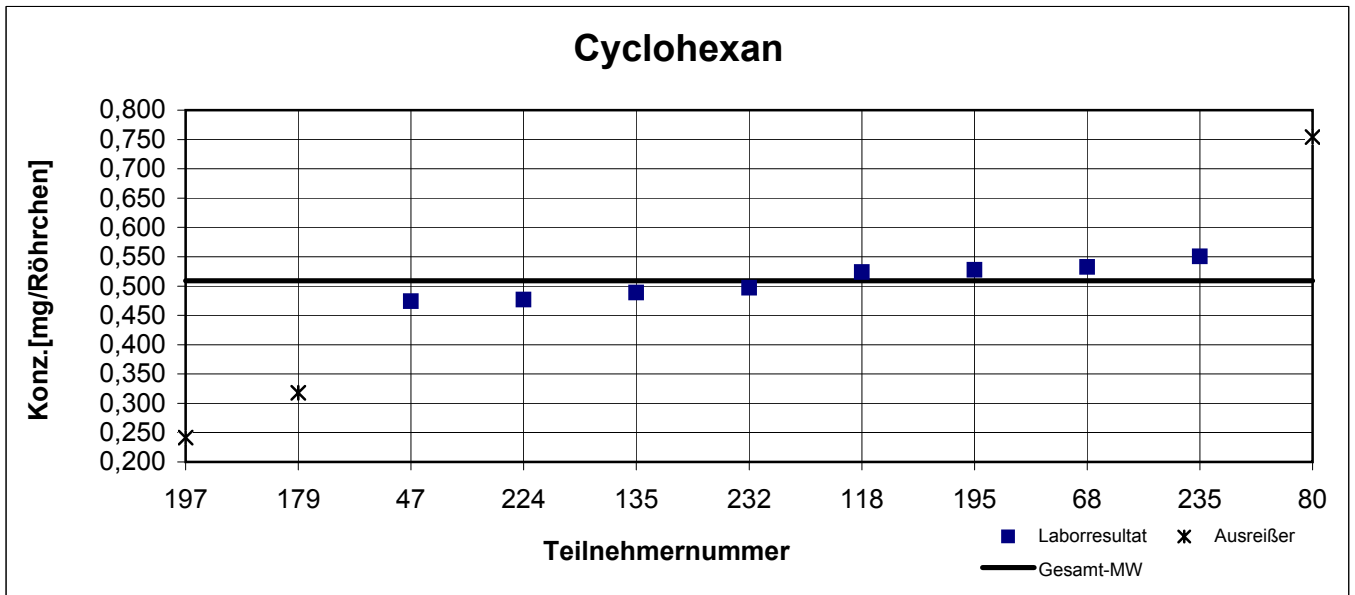
results NIOSH - sample 1

participant number	cyclohexane		ethyl benzene		n-octane	
	result [mg/tube]	z - score	result [mg/tube]	z - score	result [mg/tube]	z - score
47	0,474	0,7	0,149	0,5	0,474	0,2
68	0,532	0,5	0,159	0,1	0,499	0,5
80	0,754	5,3	0,191	2,1	0,690	5,7
118	0,524	0,3	0,159	0,1	0,498	0,5
135	0,489	0,4	0,149	0,6	0,464	0,4
137	k.A.	k.A.	0,148	0,6	0,459	0,6
179	0,318	4,1	0,196	2,4	0,425	1,5
195	0,527	0,4	0,155	0,1	0,558	2,1
197	0,242	5,8	0,135	1,5	0,447	0,9
224	0,477	0,7	0,151	0,4	0,490	0,3
232	0,497	0,3	0,148	0,6	0,481	0,0
235	0,551	0,9	0,164	0,4	0,522	1,1
238	k.A.	k.A.	0,144	0,9	0,441	1,1

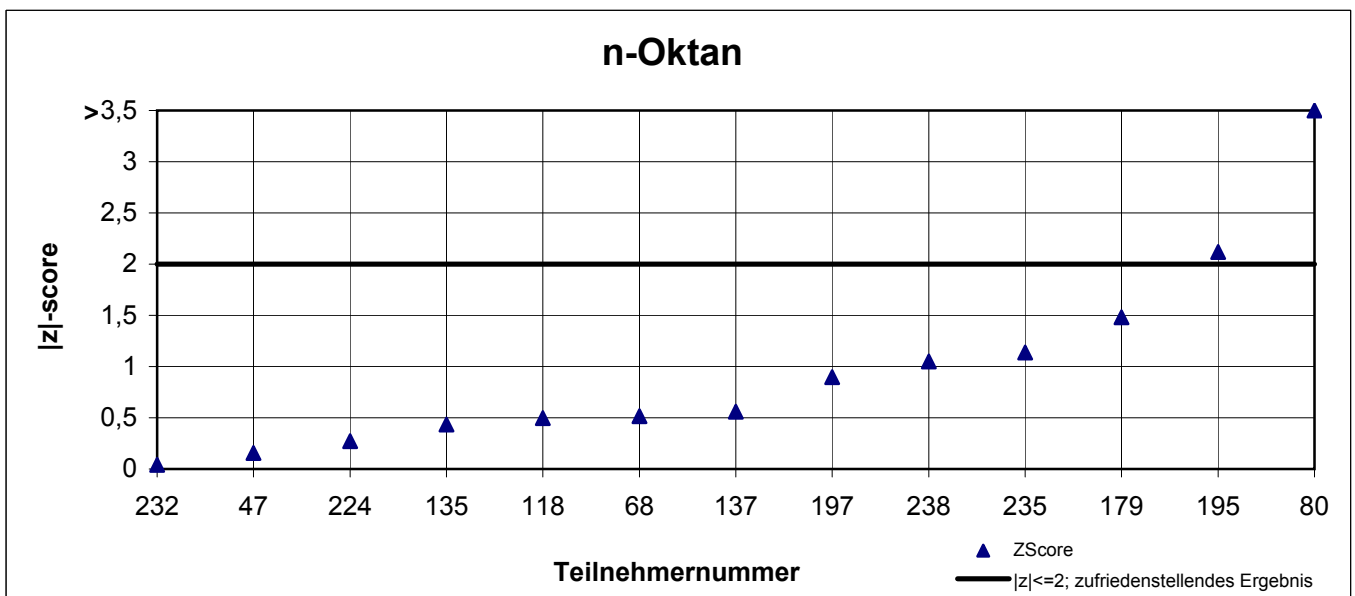
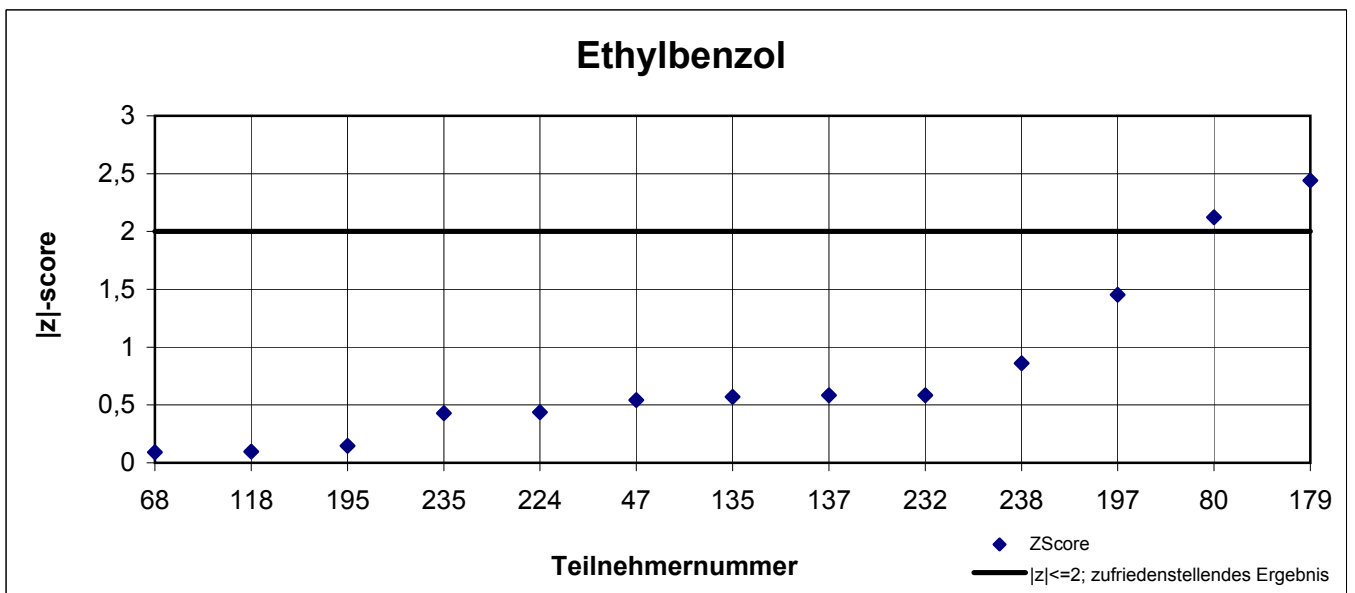
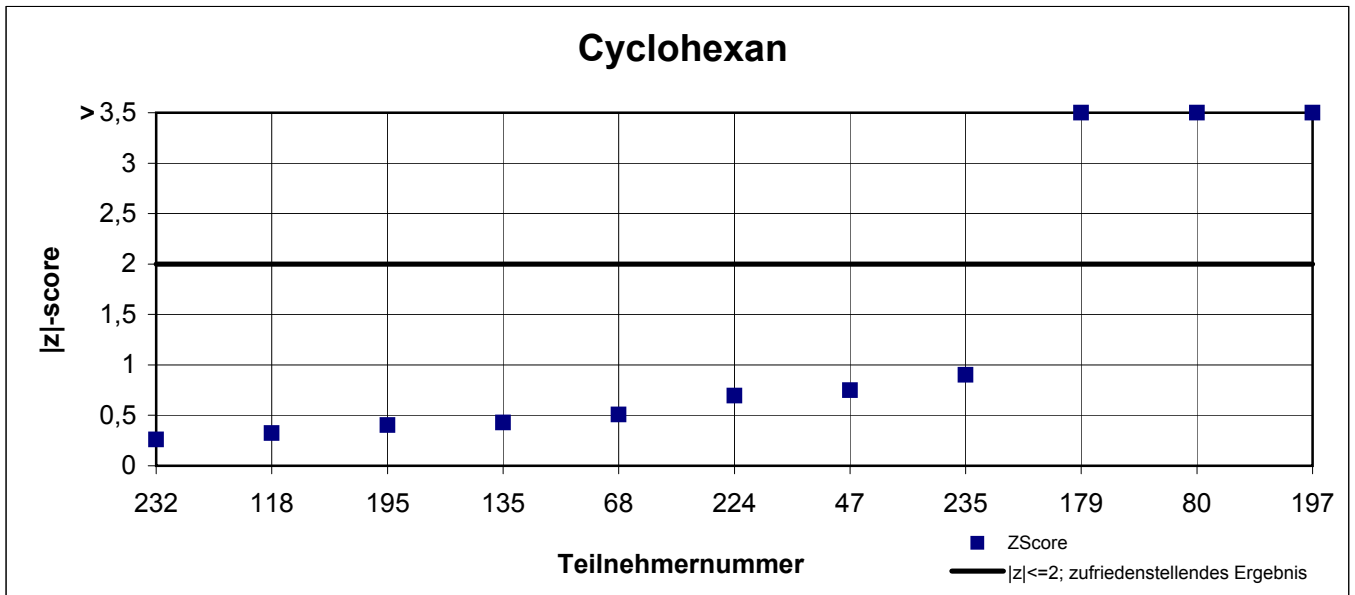
With shaded signed fields are outliers!

	cyclo-hexane	ethyl benzene	n-octane
mean c_k [mg / tube]	0,509	0,158	0,480
standard deviation S_k [mg / tube]	0,0284	0,0176	0,0370
relative standard deviation [%]	5,58	11,19	7,72

Laborresultate NIOSH - Probe 1



|z|-scores NIOSH - Probe 1



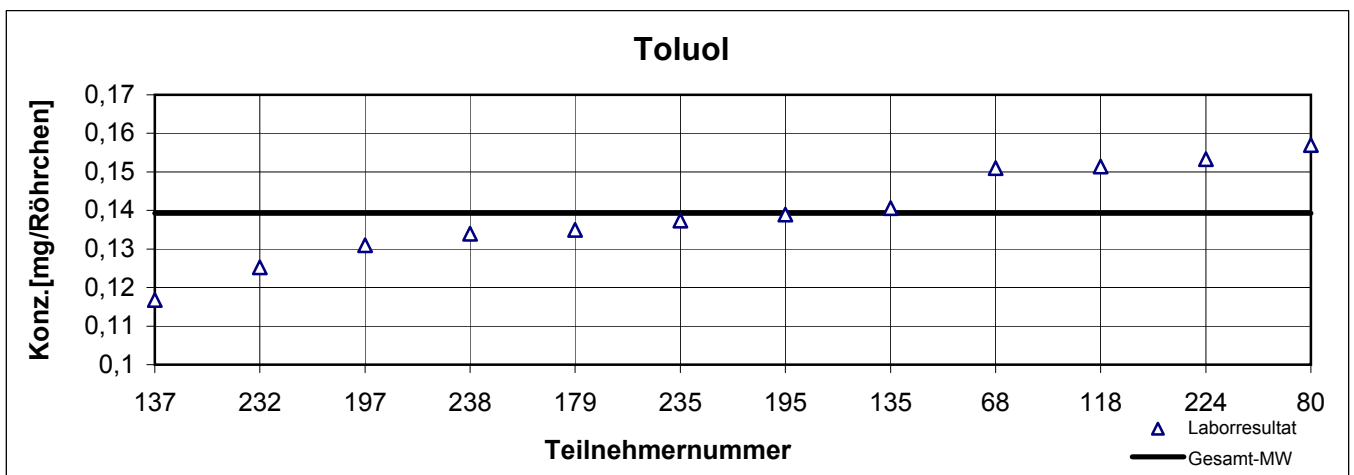
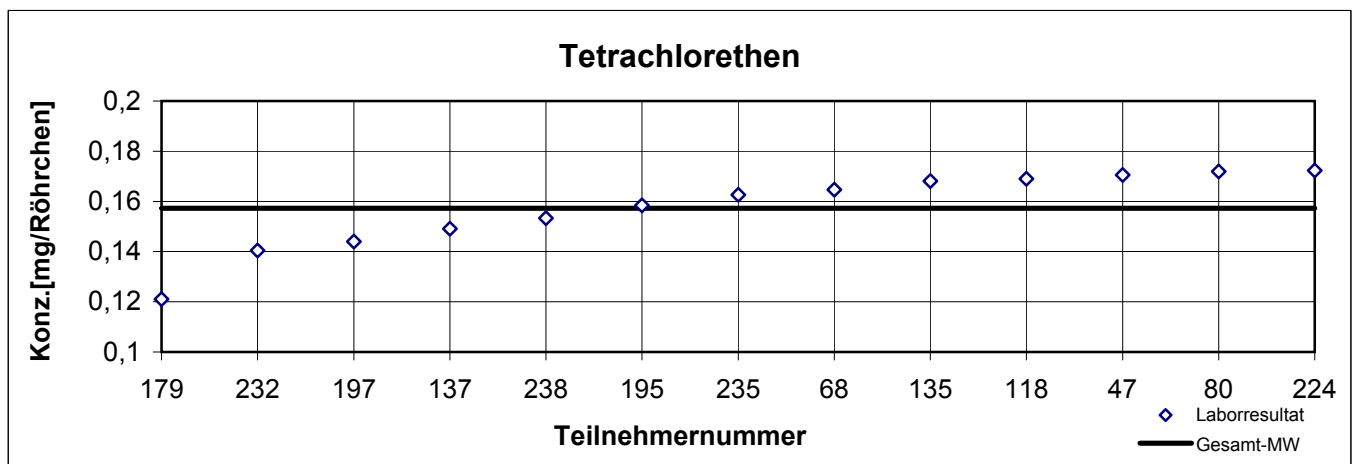
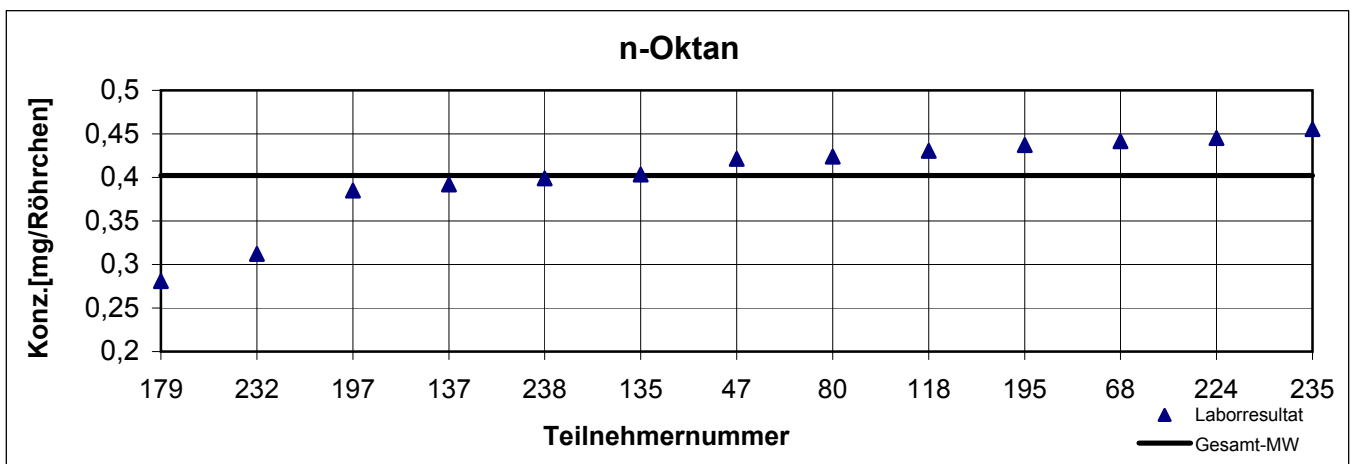
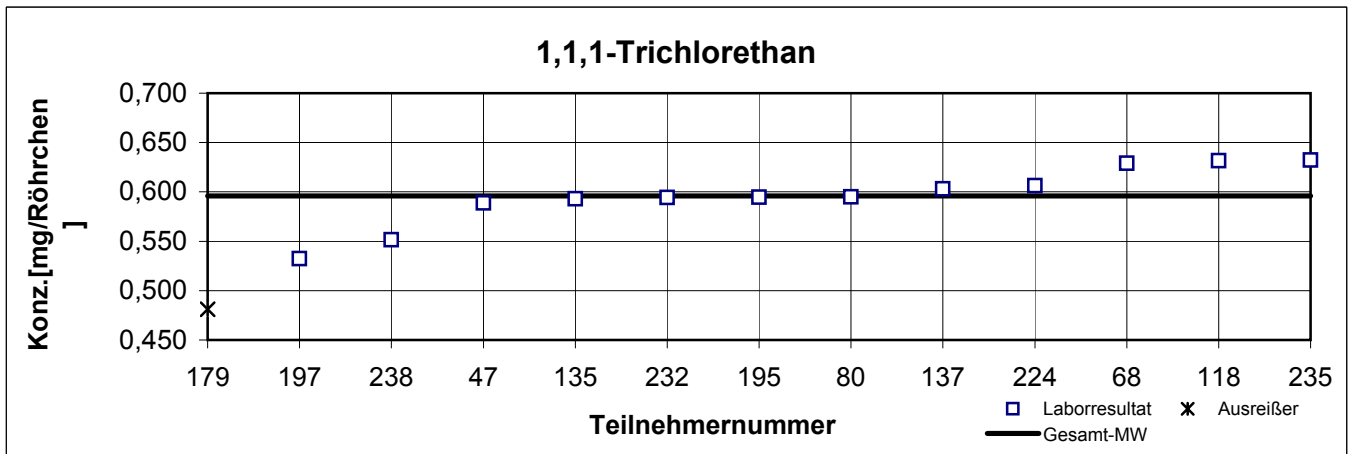
results NIOSH - sample 2

participant number	1,1,1-trichlorethane		n-octane		tetrachlor ethene		toluene	
	result [mg/tube]	z - score	result [mg/tube]	z - score	result [mg/tube]	z - score	result [mg/tube]	z - score
47	0,589	0,2	0,421	0,5	0,171	0,9	k.A.	k.A.
68	0,629	1,1	0,442	1,0	0,165	0,5	0,151	1,0
80	0,595	0,0	0,424	0,5	0,172	1,0	0,157	1,5
118	0,632	1,2	0,431	0,7	0,169	0,8	0,151	1,0
135	0,593	0,1	0,403	0,0	0,168	0,7	0,141	0,1
137	0,603	0,2	0,392	0,3	0,149	0,5	0,117	1,9
179	0,481	3,8	0,281	3,0	0,121	2,4	0,135	0,4
195	0,595	0,0	0,437	0,9	0,158	0,1	0,139	0,0
197	0,532	2,1	0,385	0,4	0,144	0,9	0,131	0,7
224	0,606	0,3	0,445	1,1	0,172	1,0	0,153	1,2
232	0,594	0,1	0,312	2,2	0,140	1,1	0,125	1,2
235	0,632	1,2	0,456	1,3	0,163	0,3	0,137	0,2
238	0,551	1,5	0,399	0,1	0,153	0,3	0,134	0,4

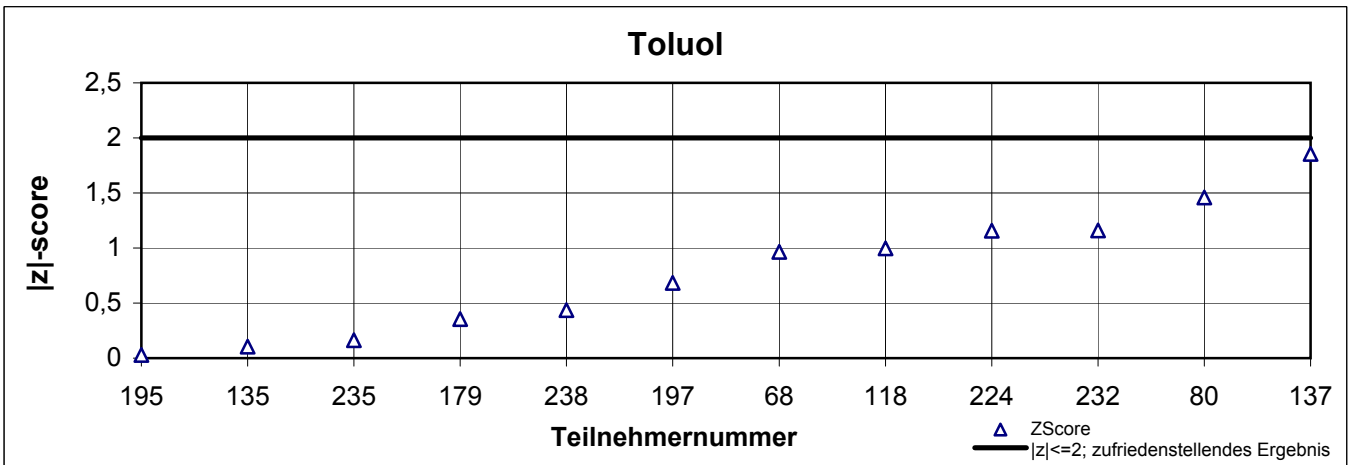
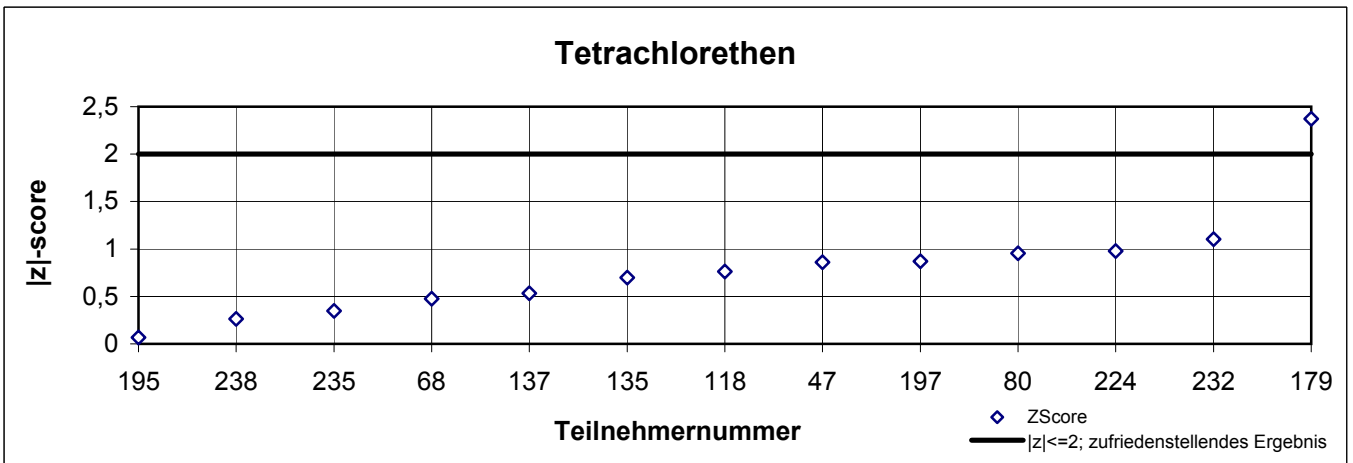
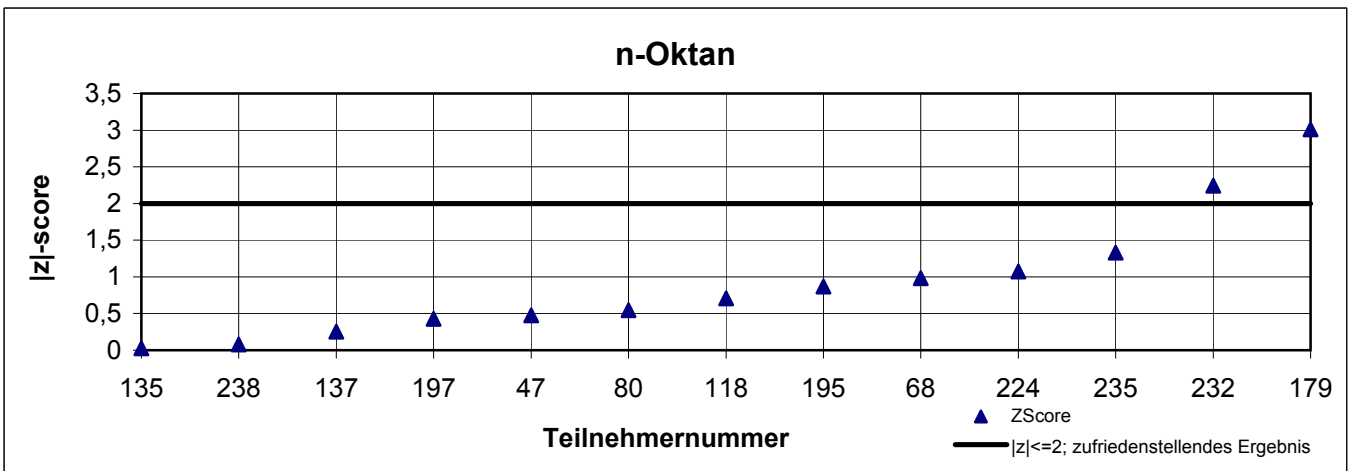
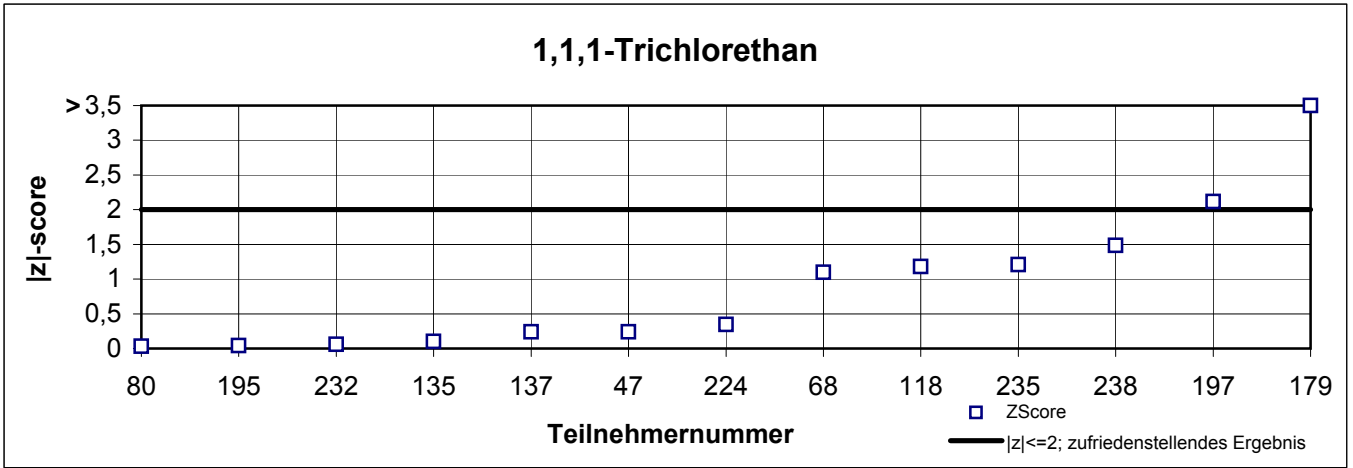
With 0,481 signed fields are outliers!

	1,1,1-tri-chlorethane	n-octane	tetrachlor ethene	toluene
mean c_k [mg / tube]	0,596	0,402	0,157	0,139
standard deviation S_k [mg / tube]	0,0300	0,0519	0,0153	0,0121
relative standard deviation [%]	5,04	12,92	9,74	8,71

Laborresultate NIOSH - Probe 2



|z|-scores NIOSH - Probe 2



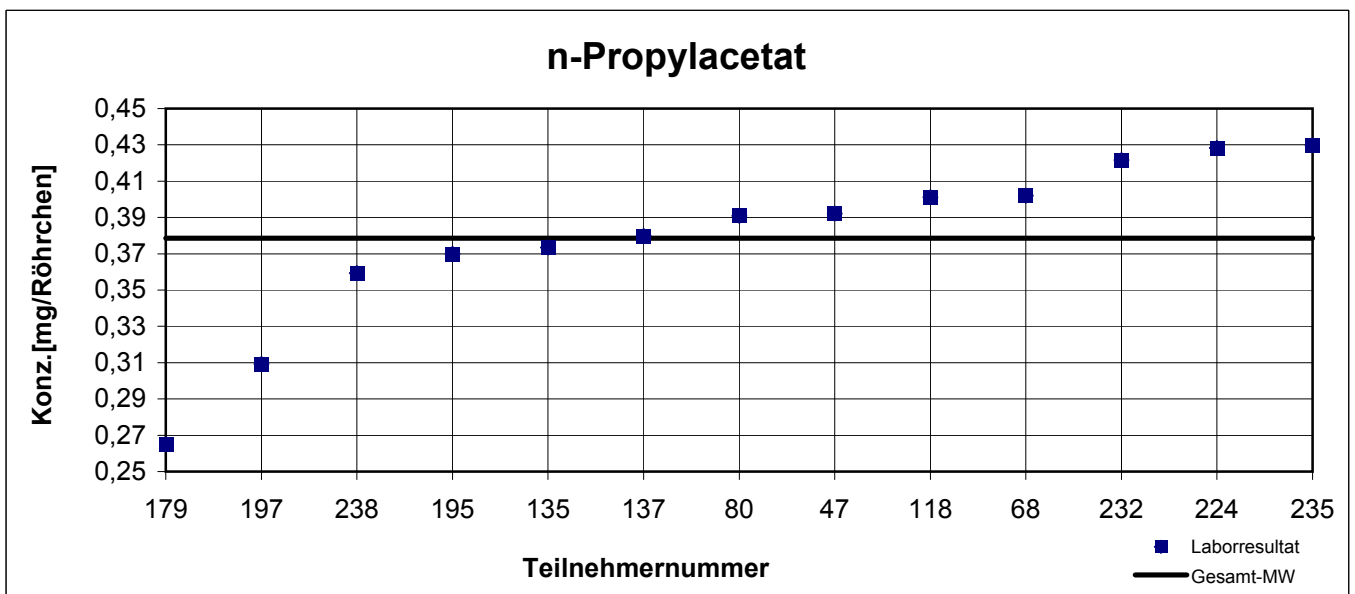
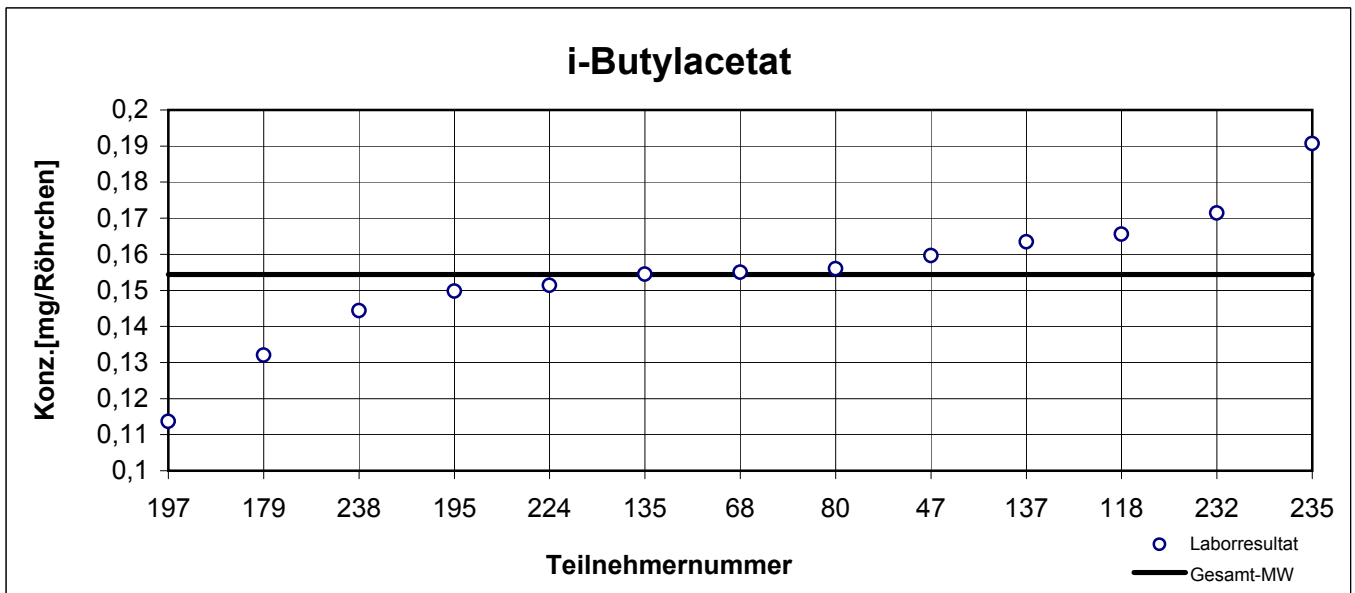
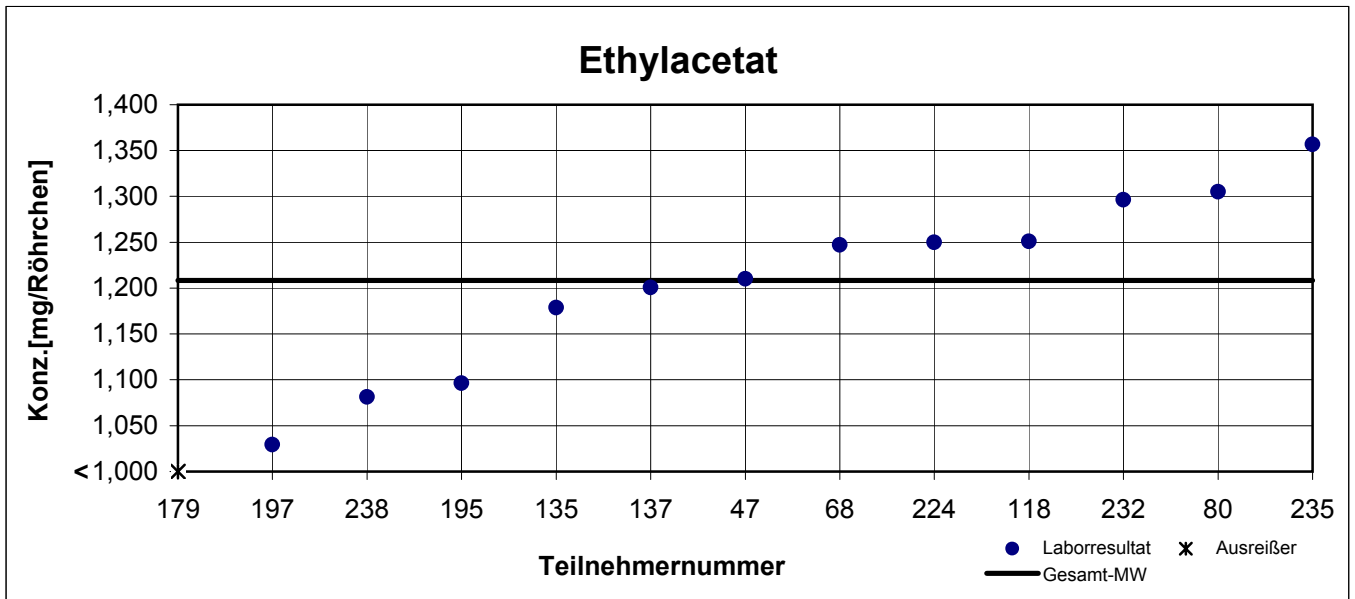
results NIOSH - sample 3

participant number	ethyl acetate		i-butyl acetate		n-propyl acetate	
	result [mg/tube]	z - score	result [mg/tube]	z - score	result [mg/tube]	z - score
47	1,210	0,0	0,160	0,3	0,392	0,4
68	1,247	0,4	0,155	0,0	0,402	0,6
80	1,305	1,0	0,156	0,1	0,391	0,3
118	1,251	0,4	0,166	0,7	0,401	0,6
135	1,179	0,3	0,155	0,0	0,374	0,1
137	1,201	0,1	0,163	0,6	0,380	0,0
179	0,545	6,8	0,132	1,5	0,265	3,0
195	1,096	1,1	0,150	0,3	0,370	0,2
197	1,029	1,8	0,114	2,6	0,309	1,8
224	1,250	0,4	0,151	0,2	0,428	1,3
232	1,296	0,9	0,171	1,1	0,422	1,1
235	1,357	1,5	0,191	2,3	0,430	1,3
238	1,081	1,3	0,144	0,7	0,359	0,5

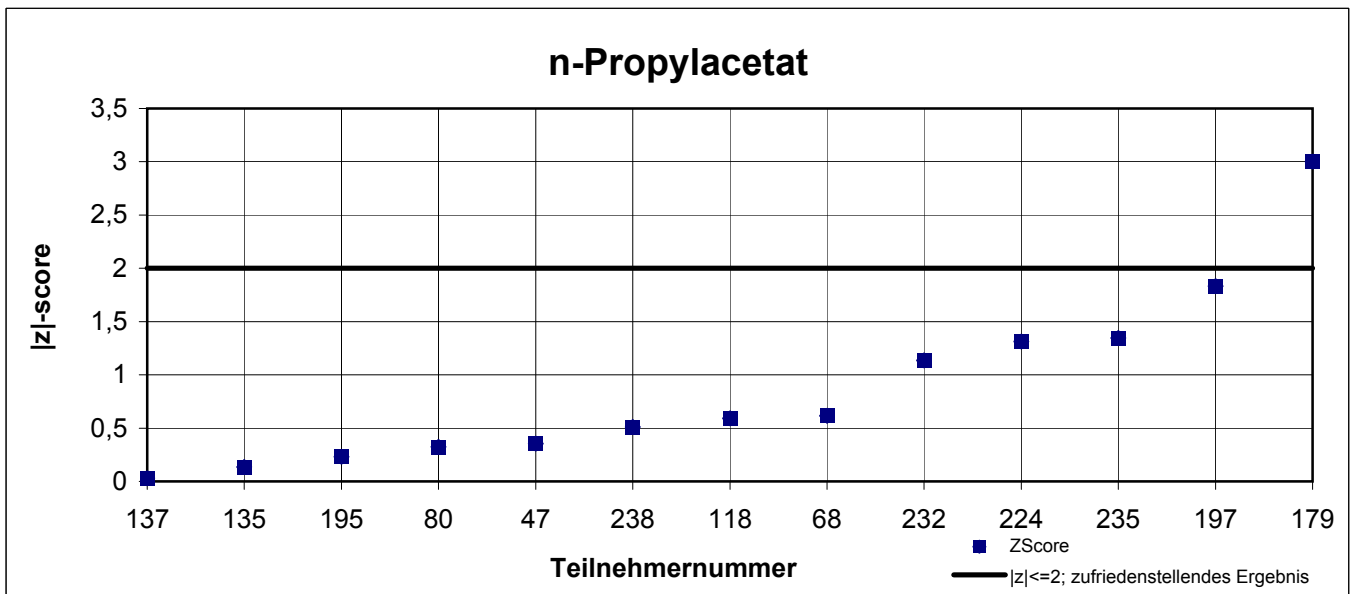
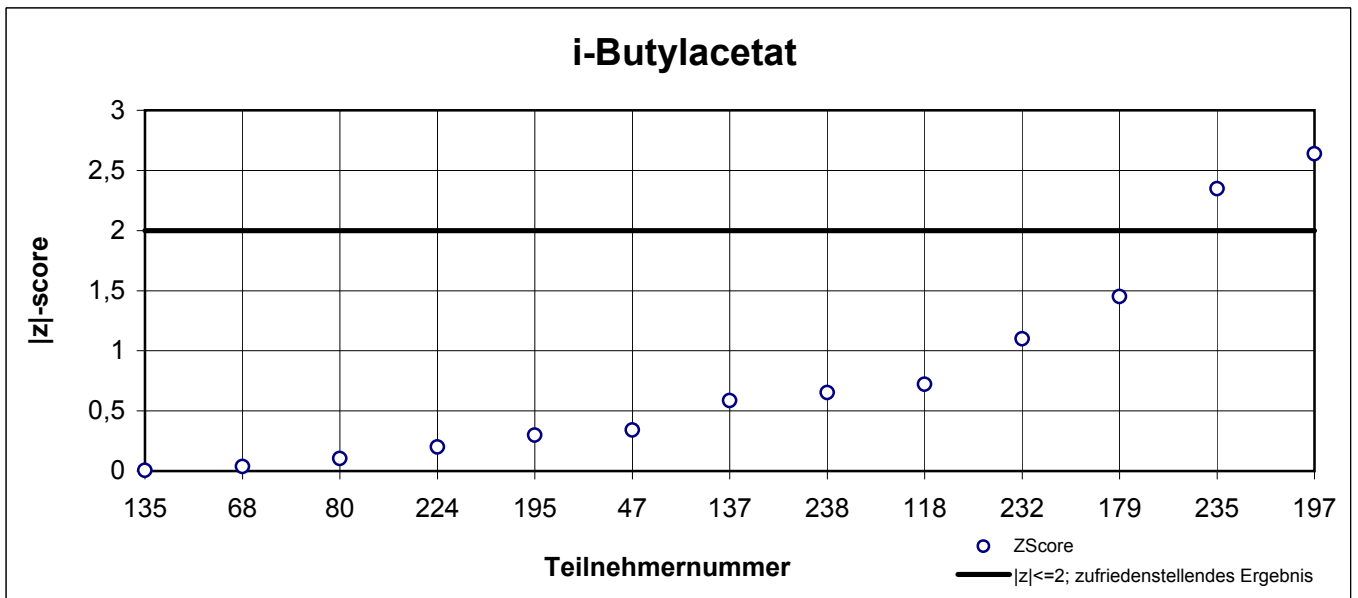
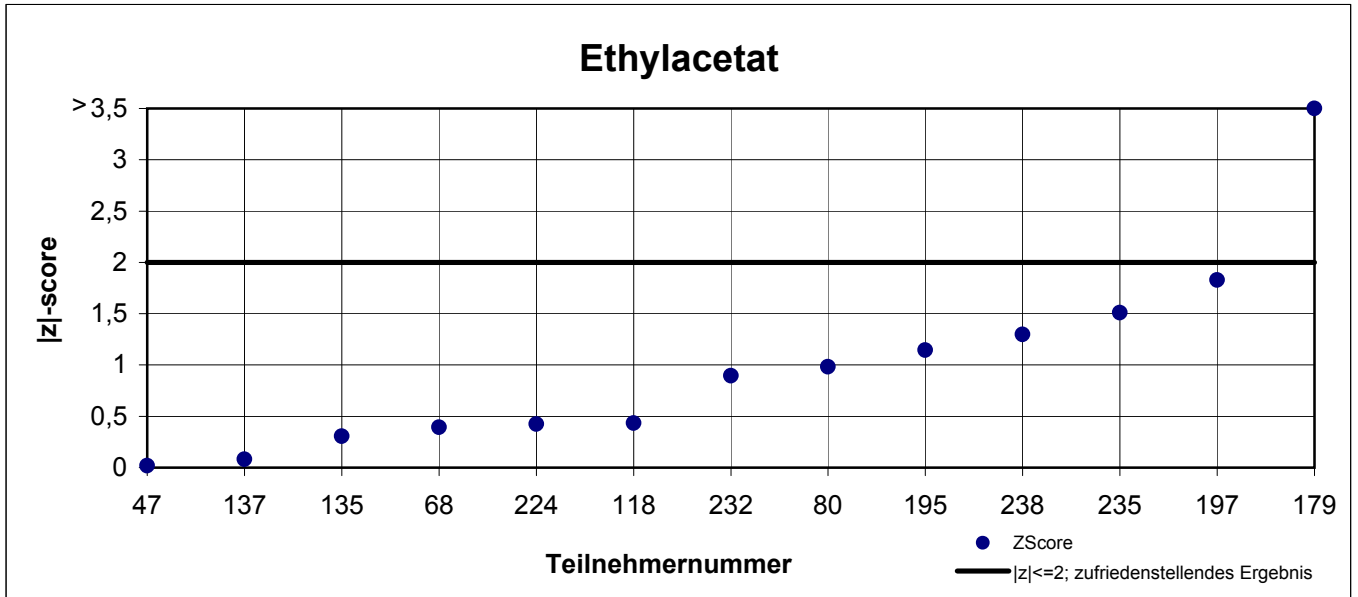
With 0,545 signed fields are outliers!

	ethyl acetate	i-butyl acetate	i-propyl acetate
mean c_k [mg / tube]	1,209	0,154	0,379
standard deviation S_k [mg / tube]	0,0980	0,0185	0,0469
relative standard deviation [%]	8,11	12,02	12,41

Laborresultate NIOSH - Probe 3



|z|-scores NIOSH - Probe 3



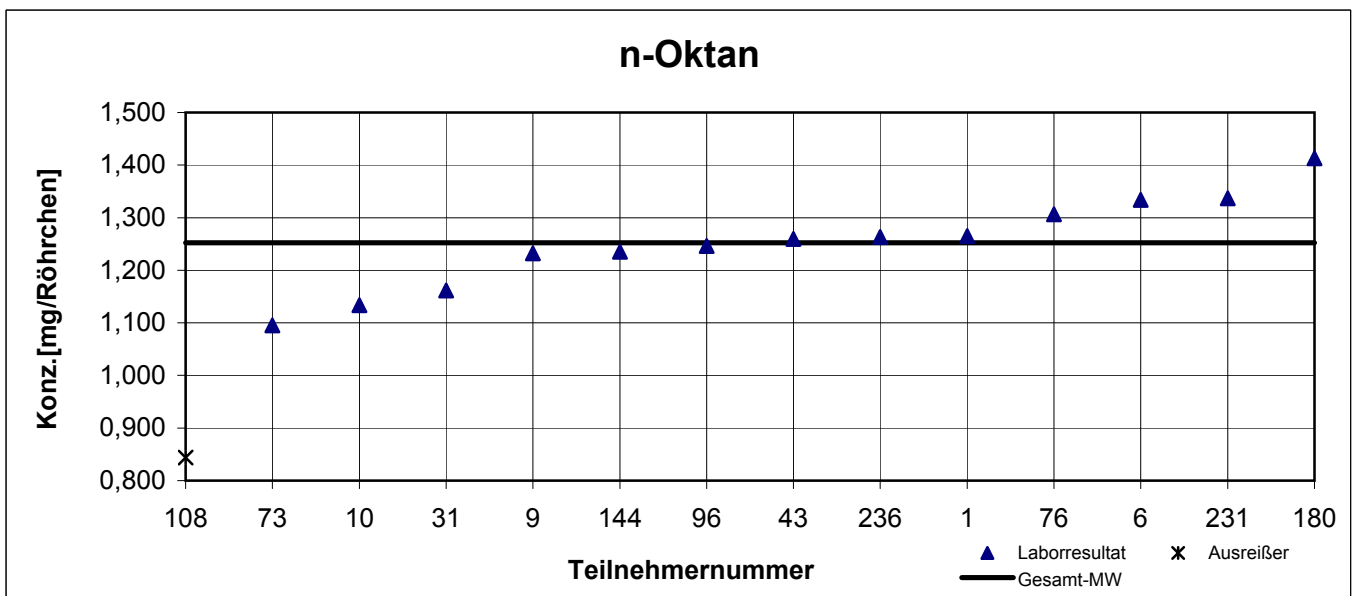
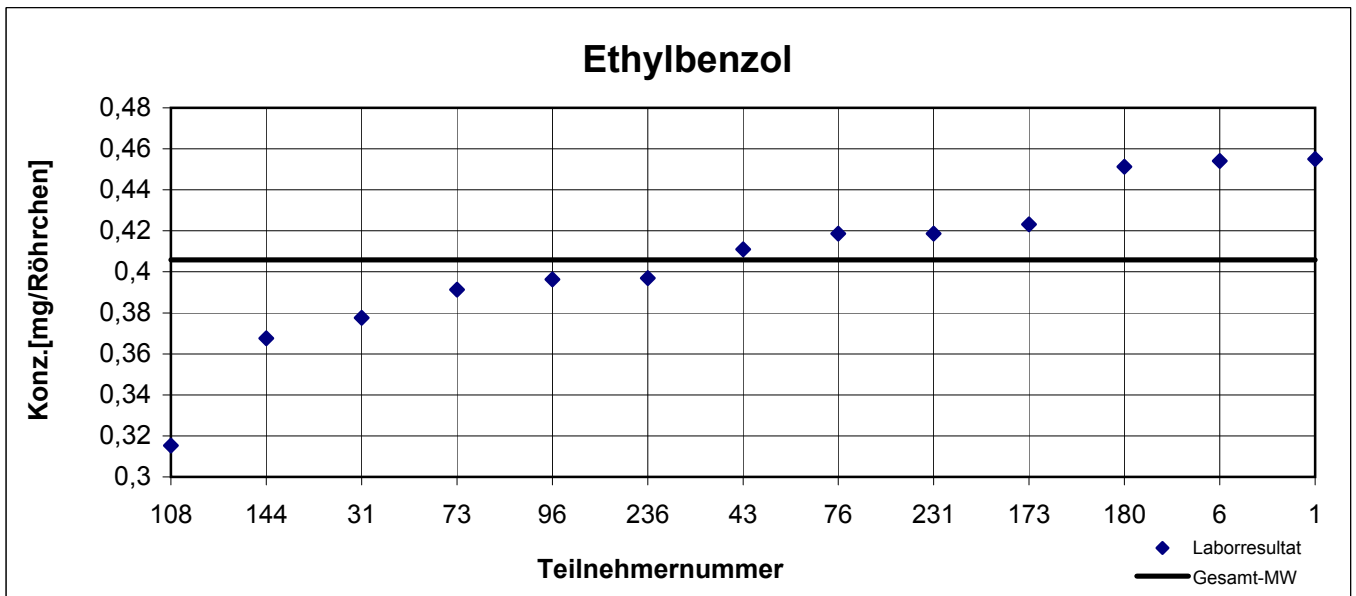
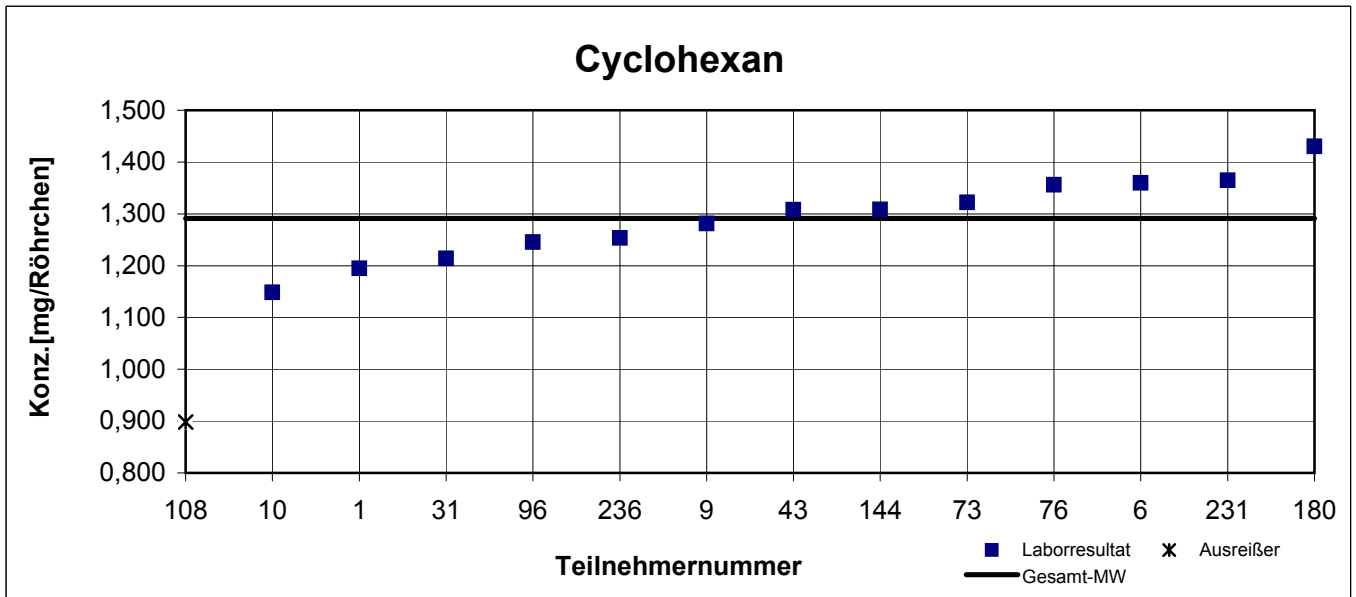
results TYP B - sample 1

participant number	cyclohexane		ethyl benzene		n-octane	
	result [mg/tube]	z - score	result [mg/tube]	z - score	result [mg/tube]	z - score
1	1,195	1,2	0,455	1,3	1,265	0,1
6	1,360	0,9	0,454	1,2	1,334	0,9
9	1,281	0,1	k.A.	k.A.	1,232	0,2
10	1,149	1,8	k.A.	k.A.	1,134	1,4
14	k.A.	k.A.	k.A.	k.A.	k.A.	k.A.
31	1,214	1,0	0,378	0,7	1,161	1,0
43	1,308	0,2	0,411	0,1	1,260	0,1
73	1,322	0,4	0,391	0,4	1,095	1,8
76	1,356	0,8	0,419	0,3	1,306	0,6
96	1,246	0,6	0,396	0,2	1,246	0,1
108	0,898	5,0	0,315	2,3	0,844	4,7
144	1,309	0,2	0,368	1,0	1,235	0,2
173	k.A.	k.A.	0,423	0,4	k.A.	k.A.
180	1,430	1,8	0,451	1,2	1,413	1,8
231	1,365	0,9	0,419	0,3	1,337	1,0
236	1,253	0,5	0,397	0,2	1,263	0,1

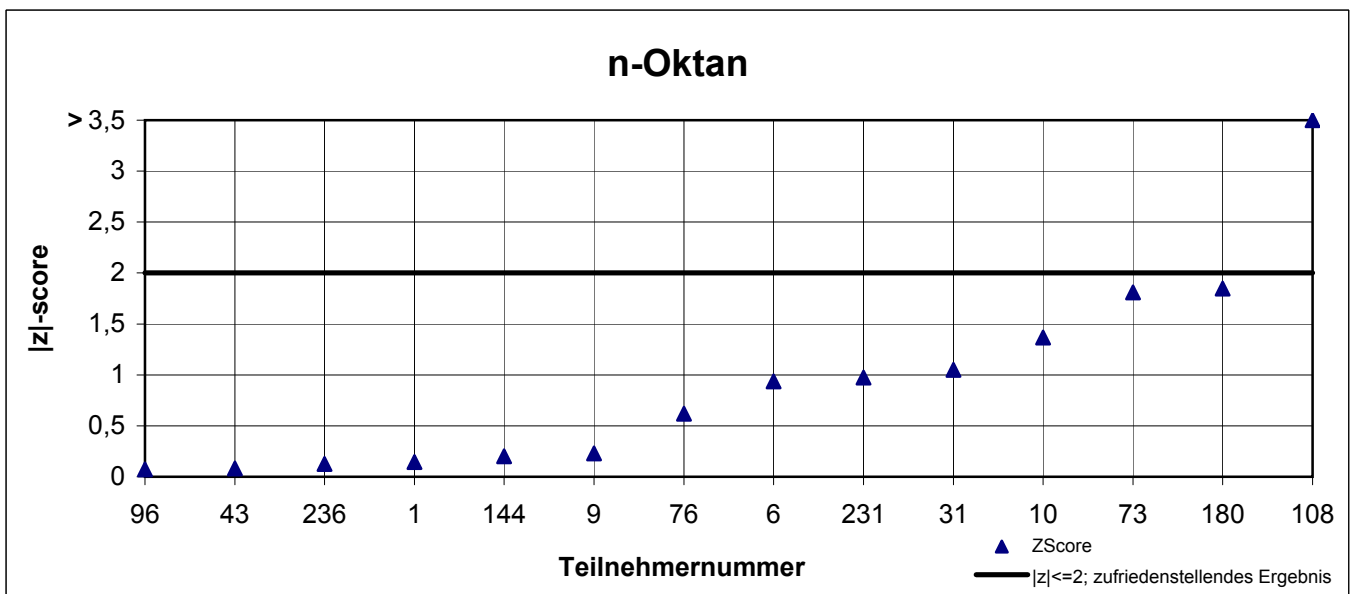
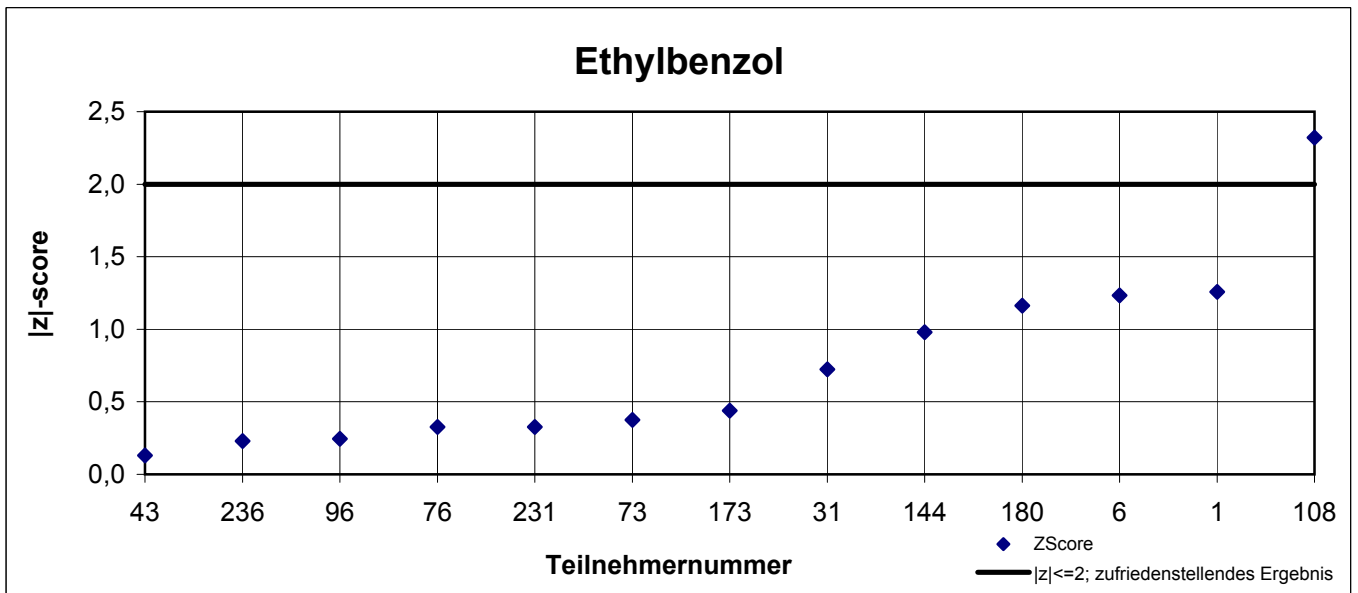
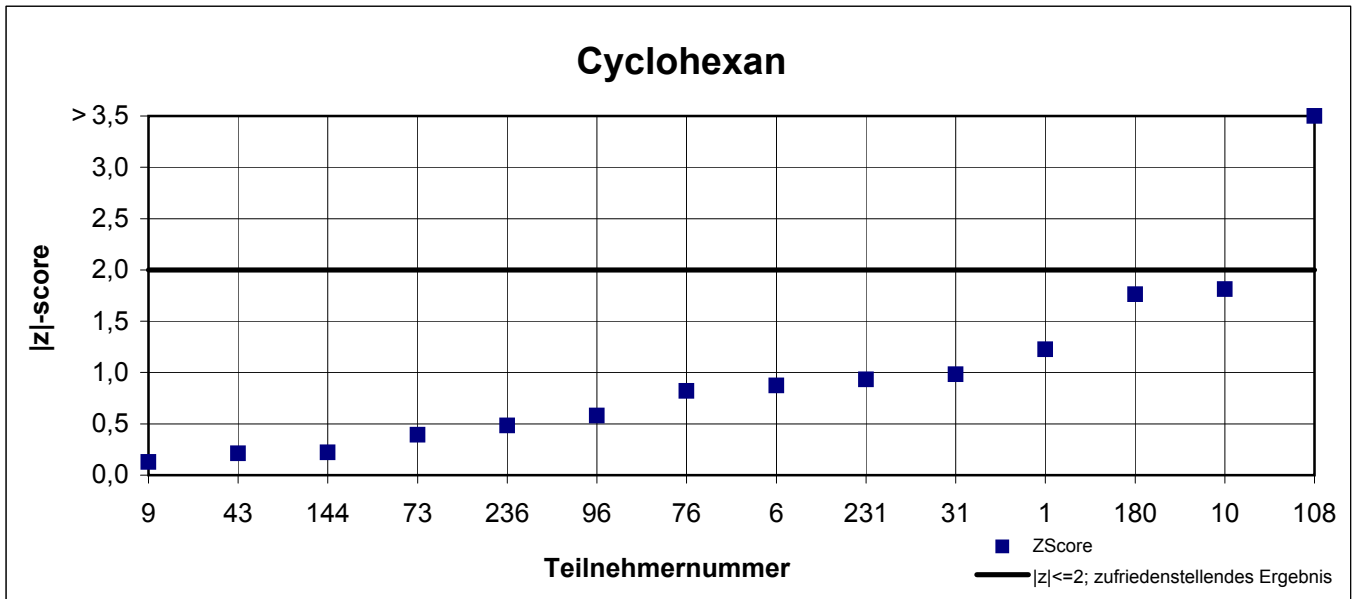
With 0,898 signed fields are outliers!

	cyclo-hexane	ethyl benzene	n-octane
mean c_k [mg / tube]	1,291	0,406	1,252
standard deviation S_k [mg / tube]	0,0786	0,0390	0,0868
relative standard deviation [%]	6,09	9,62	6,94

Laborresultate TYP B - Probe 1



|z|-scores TYP B - Probe 1



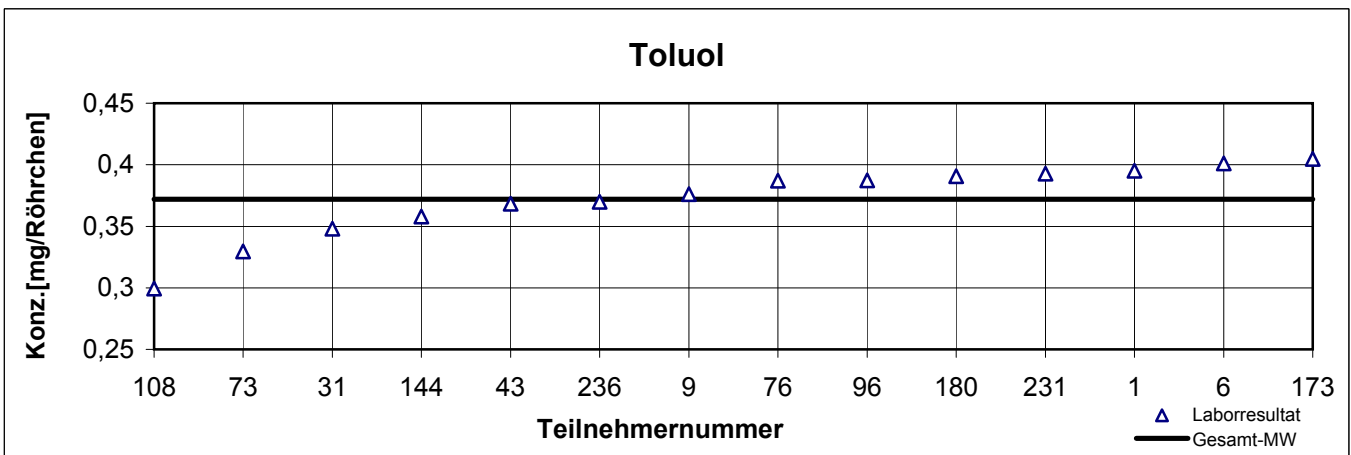
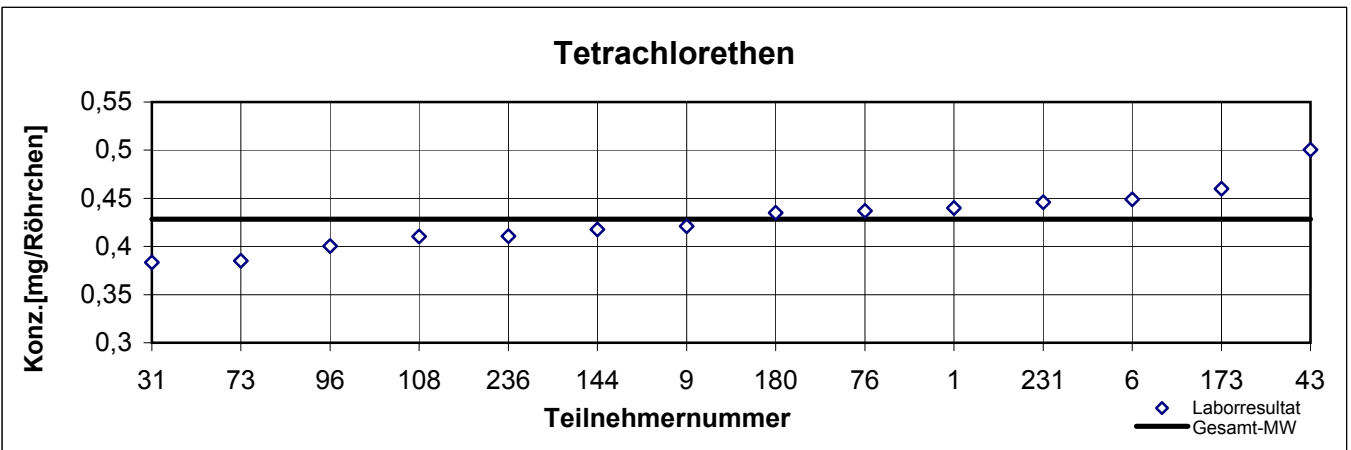
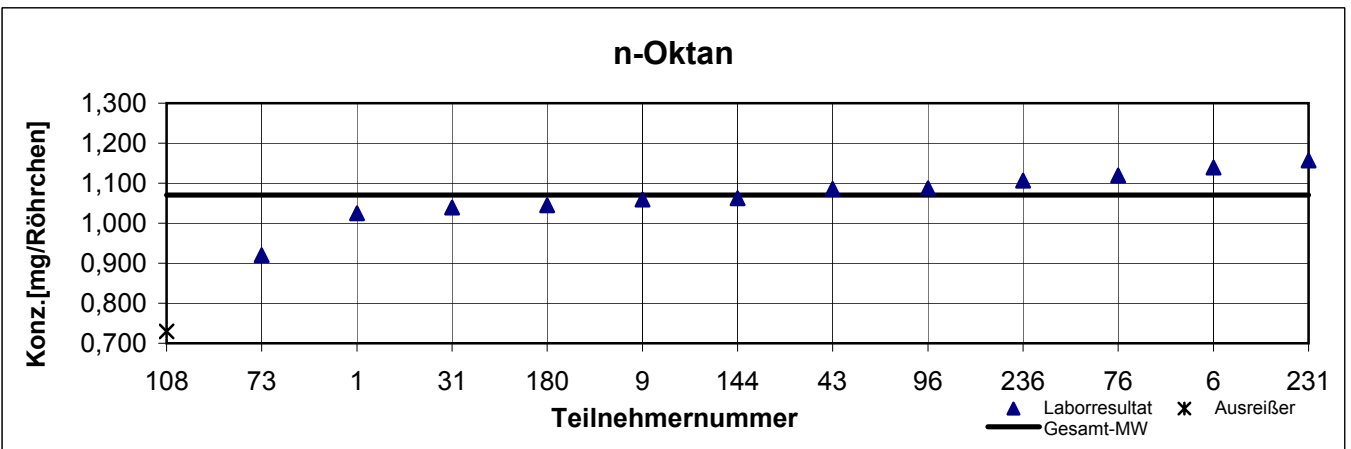
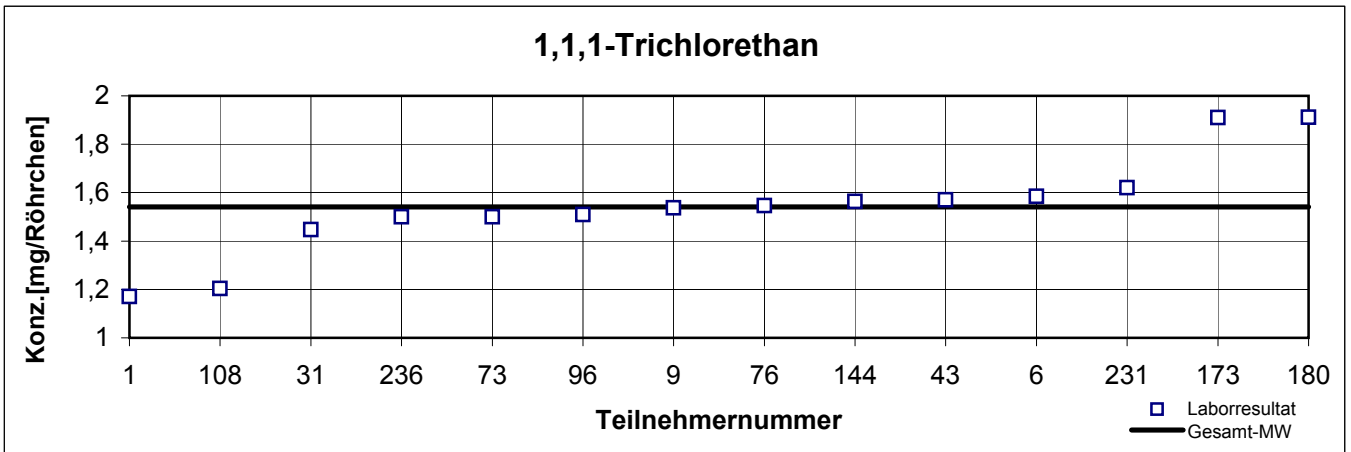
results TYP B - sample 2

participant number	1,1,1-trichlorethane		n-octane		tetrachlor ethene		toluene	
	result [mg/tube]	z - score	result [mg/tube]	z - score	result [mg/tube]	z - score	result [mg/tube]	z - score
1	1,170	2,4	1,025	0,7	0,440	0,4	0,395	0,8
6	1,584	0,3	1,139	1,1	0,449	0,7	0,401	1,0
9	1,536	0,0	1,059	0,2	0,421	0,2	0,376	0,1
10	k.A.	k.A.	k.A.	k.A.	k.A.	k.A.	k.A.	k.A.
14	k.A.	k.A.	k.A.	k.A.	k.A.	k.A.	k.A.	k.A.
31	1,447	0,6	1,039	0,5	0,383	1,4	0,348	0,8
43	1,570	0,2	1,086	0,2	0,500	2,3	0,368	0,1
73	1,500	0,3	0,920	2,4	0,385	1,4	0,330	1,4
76	1,546	0,0	1,119	0,8	0,437	0,3	0,387	0,5
96	1,509	0,2	1,087	0,3	0,400	0,9	0,387	0,5
108	1,203	2,2	0,730	5,5	0,410	0,6	0,299	2,4
144	1,564	0,2	1,062	0,1	0,418	0,3	0,358	0,5
173	1,910	2,4	k.A.	k.A.	0,460	1,0	0,405	1,1
180	1,911	2,4	1,045	0,4	0,435	0,2	0,391	0,6
231	1,620	0,5	1,157	1,4	0,446	0,6	0,393	0,7
236	1,500	0,3	1,107	0,6	0,411	0,6	0,370	0,1

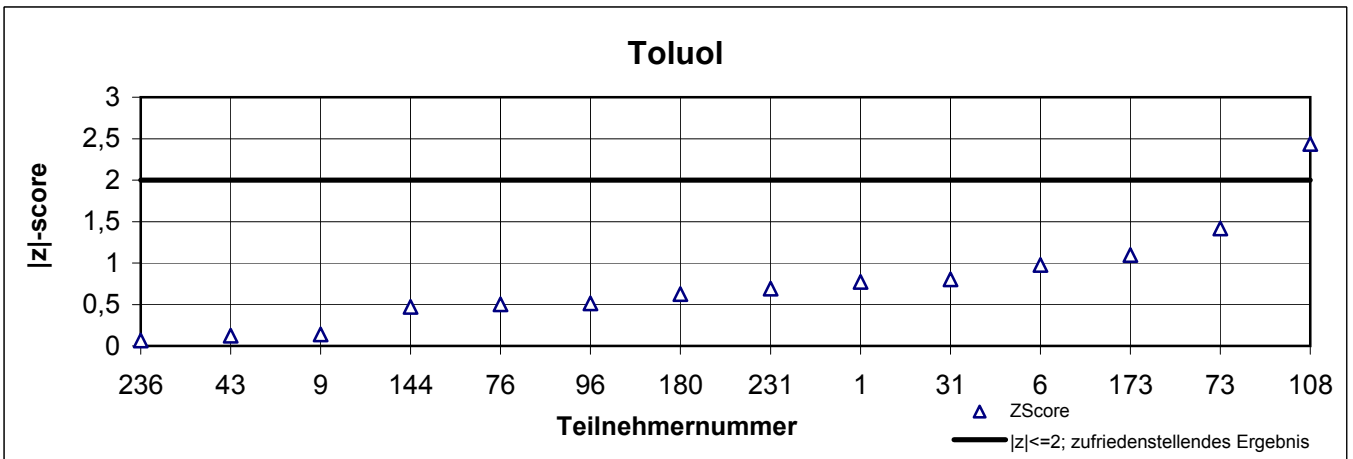
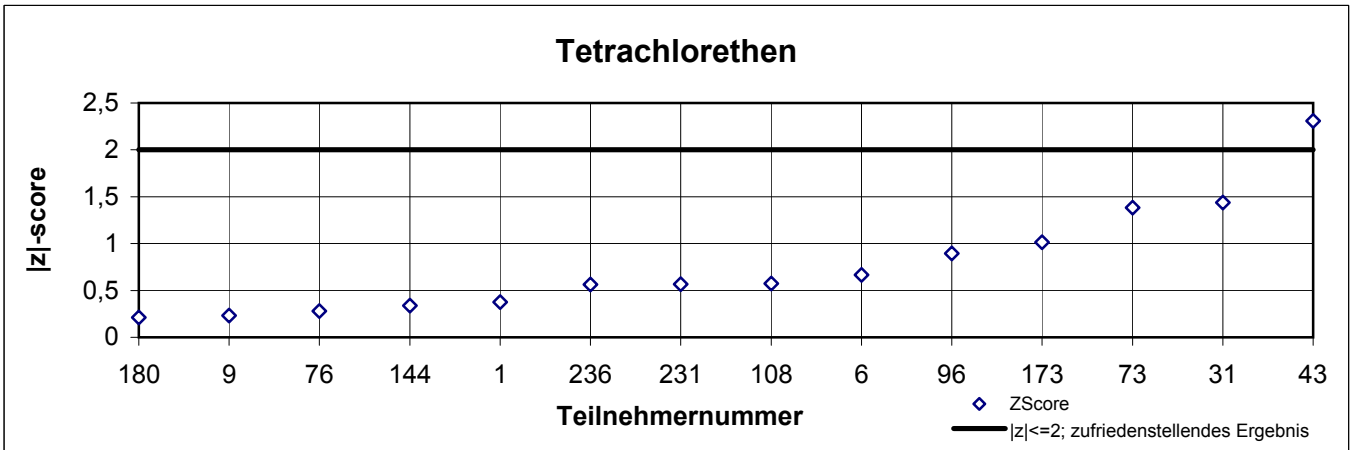
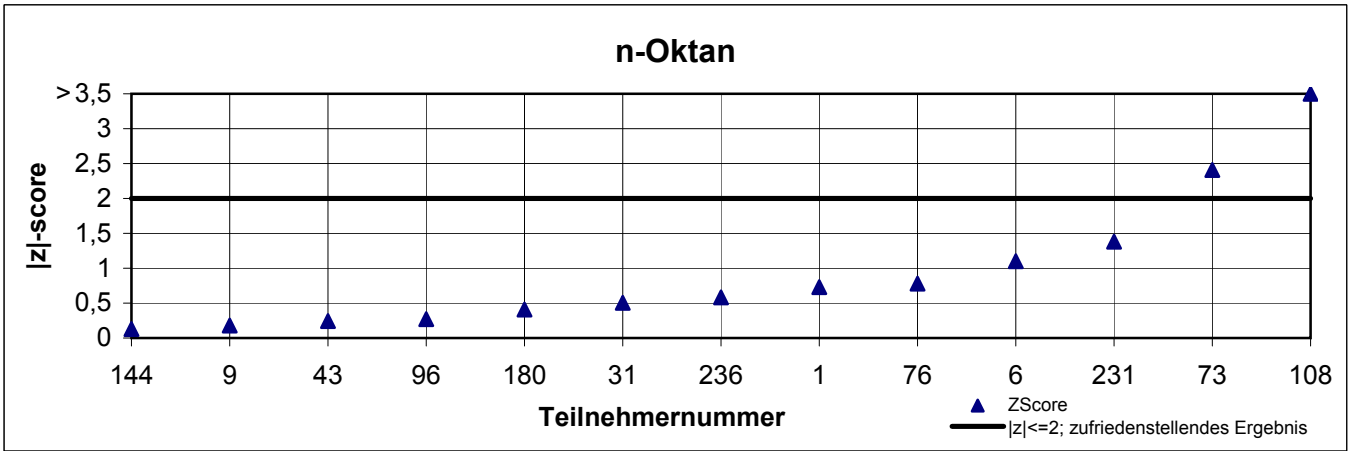
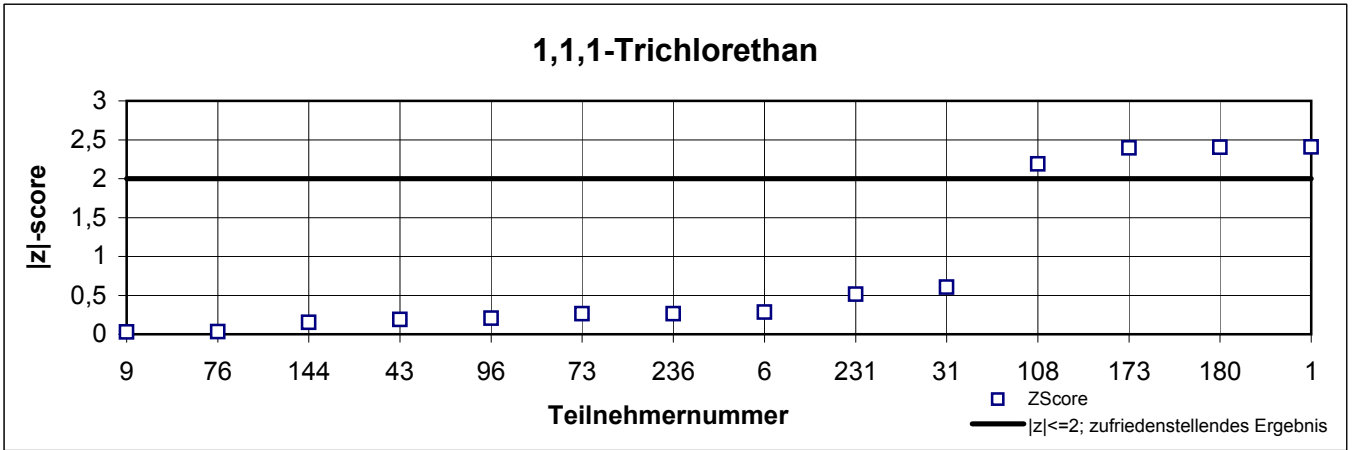
With 0,730 signed fields are outliers!

	1,1,1-tri-chlorethane	n-octane	tetrachlor ethene	toluene
mean c_k [mg / tube]	1,541	1,070	0,428	0,372
standard deviation S_k [mg / tube]	0,205	0,0623	0,0312	0,0298
relative standard deviation [%]	13,31	5,83	7,29	8,02

Laborresultate TYP B - Probe 2



|z|-scores TYP B - Probe 2



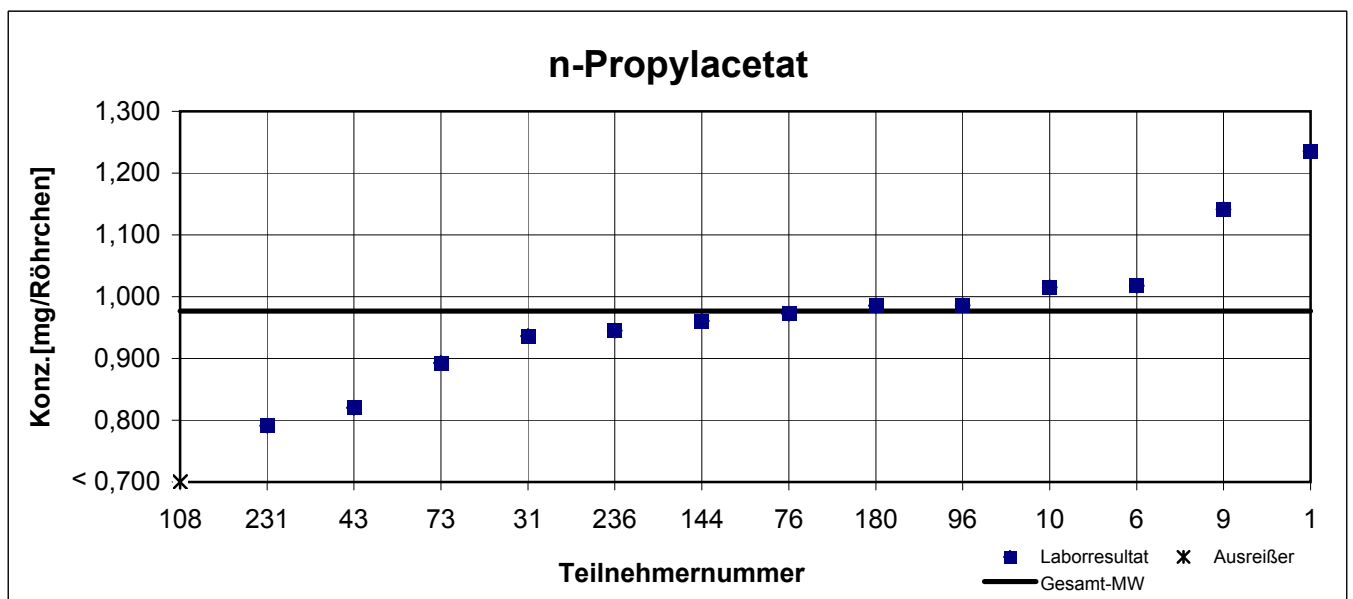
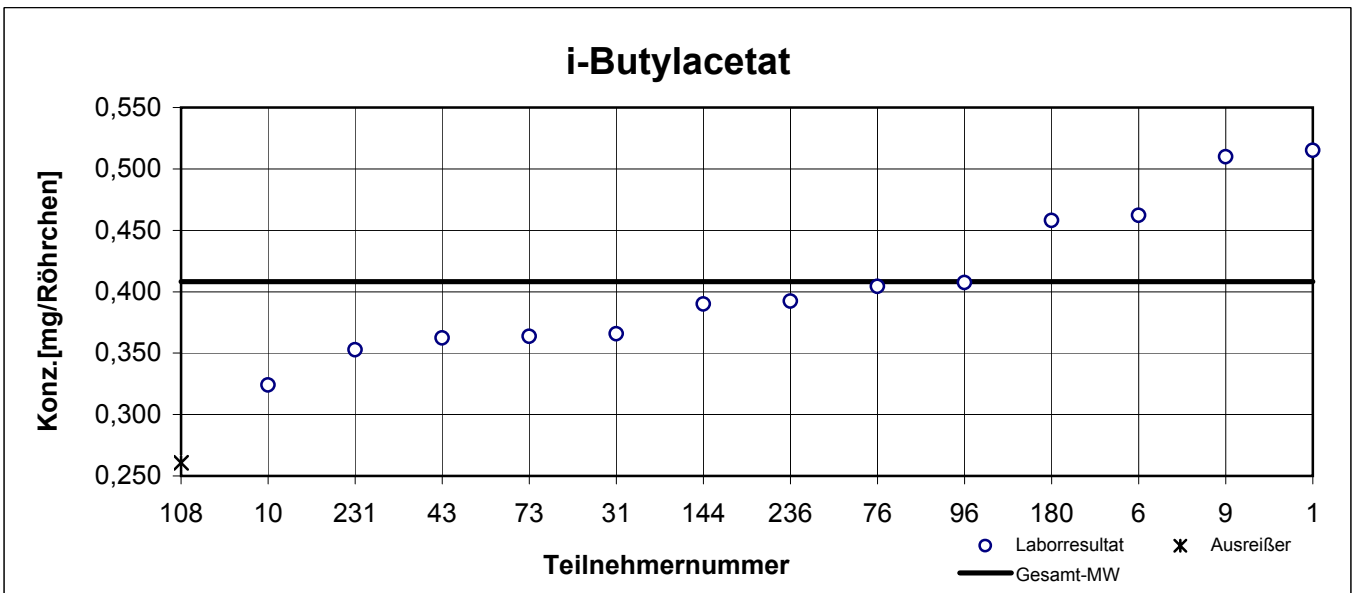
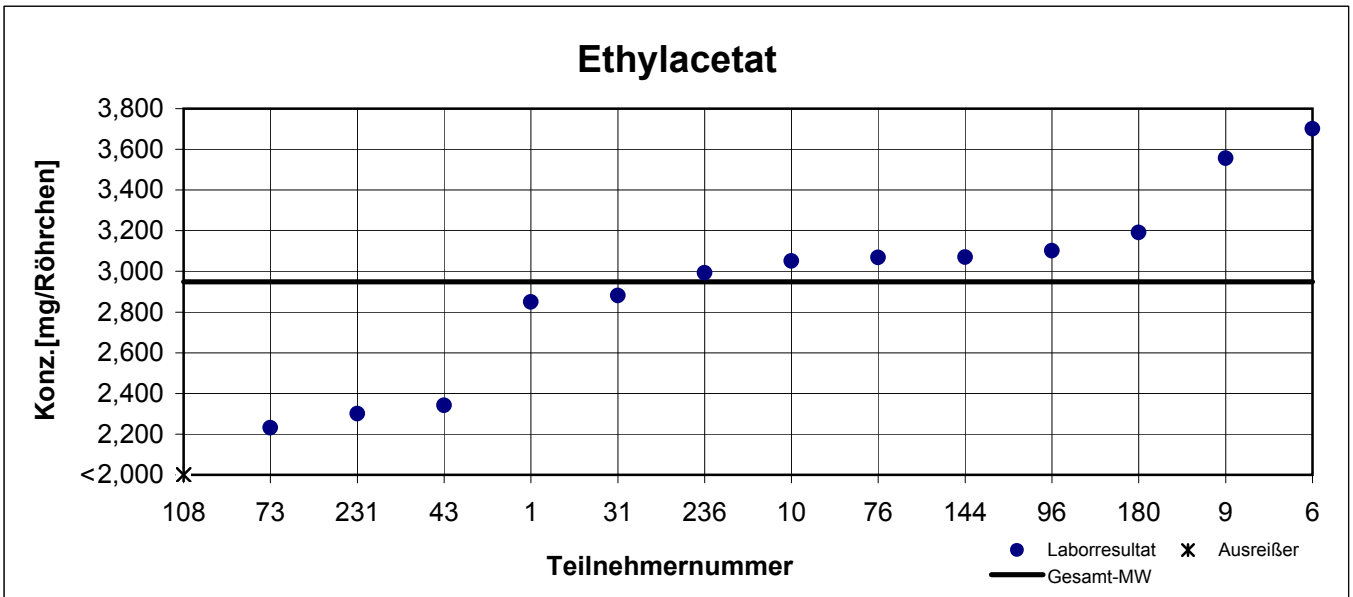
results TYP B - sample 3

participant number	ethyl acetate		i-butyl acetate		n-propyl acetate	
	result [mg/tube]	z - score	result [mg/tube]	z - score	result [mg/tube]	z - score
1	2,850	0,3	0,515	2,6	1,235	2,6
6	3,701	2,6	0,462	1,3	1,018	0,4
9	3,557	2,1	0,510	2,5	1,142	1,7
10	3,051	0,3	0,324	2,1	1,015	0,4
14	k.A.	k.A.	k.A.	k.A.	k.A.	k.A.
31	2,881	0,2	0,366	1,0	0,936	0,4
43	2,341	2,1	0,362	1,1	0,820	1,6
73	2,231	2,4	0,364	1,1	0,893	0,9
76	3,068	0,4	0,404	0,1	0,973	0,0
96	3,101	0,5	0,407	0,0	0,986	0,1
108	1,453	5,1	0,261	3,6	0,599	3,9
144	3,071	0,4	0,390	0,4	0,961	0,2
173	k.A.	k.A.	k.A.	k.A.	k.A.	k.A.
180	3,191	0,8	0,458	1,2	0,986	0,1
231	2,301	2,2	0,353	1,4	0,791	1,9
236	2,993	0,2	0,392	0,4	0,945	0,3

With signed fields are outliers!

	ethyl acetate	i-butyl acetate	i-propyl acetate
mean c_k [mg / tube]	2,949	0,408	0,977
standard deviation S_k [mg / tube]	0,445	0,0604	0,1176
relative standard deviation [%]	15,09	14,80	12,04

Laborresultate TYP B - Probe 3



|z|-scores TYP B - Probe 3

