

## sample 1 - results (part 1)

participant number	1,2,3-Trimethylbenzene		2-Butoxyethanol		2-Phenoxyethanol		Dodecan		Ethylacetate	
	result ( $\mu\text{g} / \text{m}^3$ )	z  - score	result ( $\mu\text{g} / \text{m}^3$ )	z  - score	result ( $\mu\text{g} / \text{m}^3$ )	z  - score	result ( $\mu\text{g} / \text{m}^3$ )	z  - score	result ( $\mu\text{g} / \text{m}^3$ )	z  - score
5	17,91	0,5	17,39	1,5	8,80	1,7	56,72		18,05	0,7
34	15,85	1,6	69,60	24,1	101,3	85,1	74,35		28,25	6,7
40	19,70	0,5	19,40	0,5	9,10	1,5	57,90		19,40	1,5
46	21,40	1,4	20,60	0,1	10,90	0,2	58,60		17,00	0,1
117	19,00	0,1	19,00	0,7	12,00	1,3	177,0		14,00	1,7
135	17,85	0,5	21,65	0,6	10,70	0,0	70,35		11,80	3,0
152	20,50	0,9	10,30	5,0	11,00	0,3	62,00		15,30	0,9
158	16,50	1,2	17,80	1,3	10,50	0,1	51,50		15,90	0,6
166	21,00	1,2	27,00	3,2	15,00	4,1	62,00		19,00	1,3
184	19,56	0,4	17,01	1,7	7,400	3,1	56,20		18,13	0,7
213	20,69	1,0	21,67	0,6	10,78	0,1	64,18		18,21	0,8
230	17,00	0,9	24,00	1,8	14,00	3,1	48,00		18,75	1,1
267	17,00	0,9	19,00	0,7	12,00	1,3	50,00		17,00	0,1

marked fields are outliers

	1,2,3-Trimethylbenzene	2-Butoxyethanol	2-Phenoxyethanol	Dodecane	Ethyl acetate
mean $c_k$ [ $\mu\text{g} / \text{m}^3$ ]	18,77	20,41	10,65		16,88
standard deviation $S_k$ [ $\mu\text{g} / \text{m}^3$ ]	1,863	3,033	1,775		2,269
rel. standard deviation [%]	9,93	14,86	16,55		13,44
mean value of control samples [ $\mu\text{g} / \text{m}^3$ ]	18,10	18,00	12,10		15,60

### sample 1 - results (part 2)

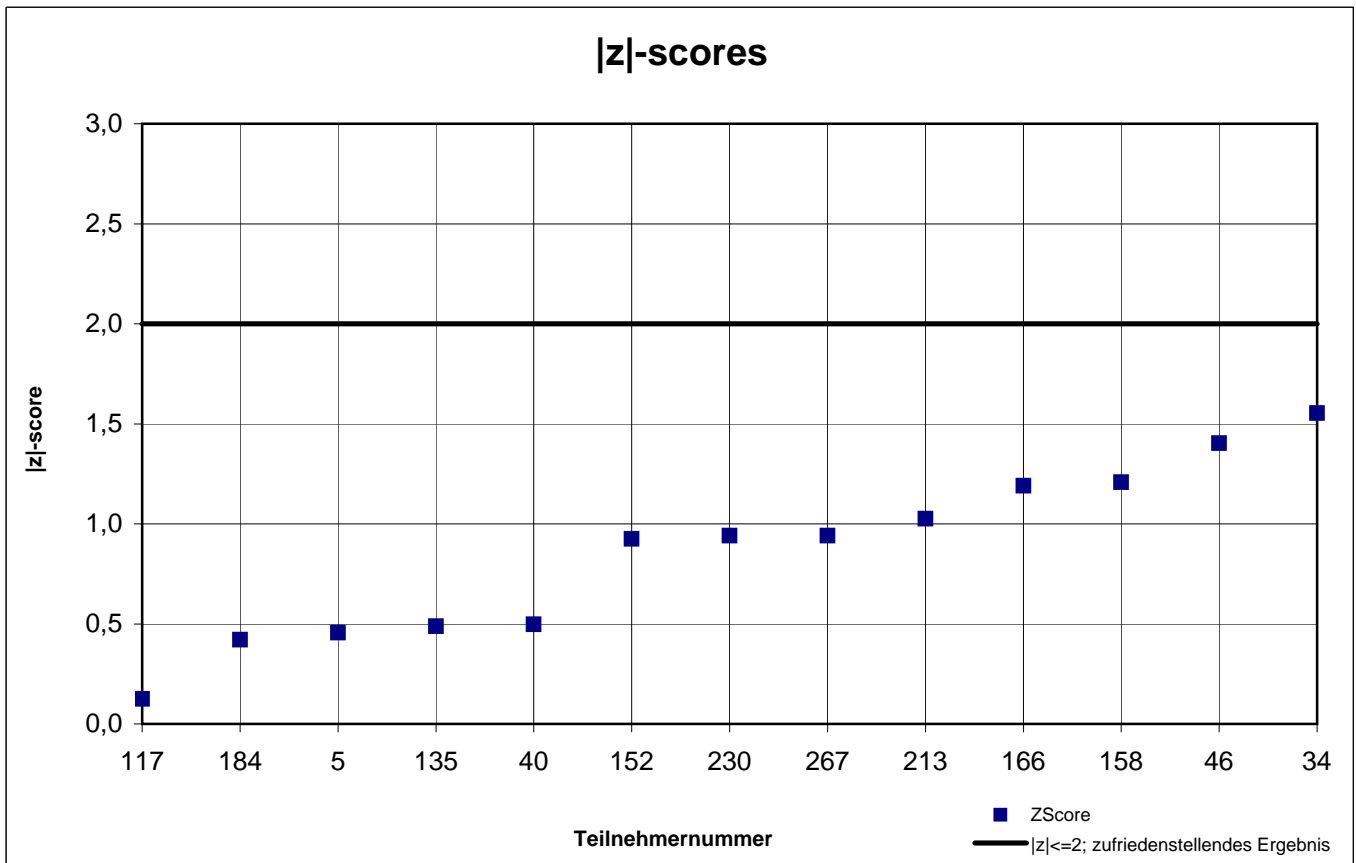
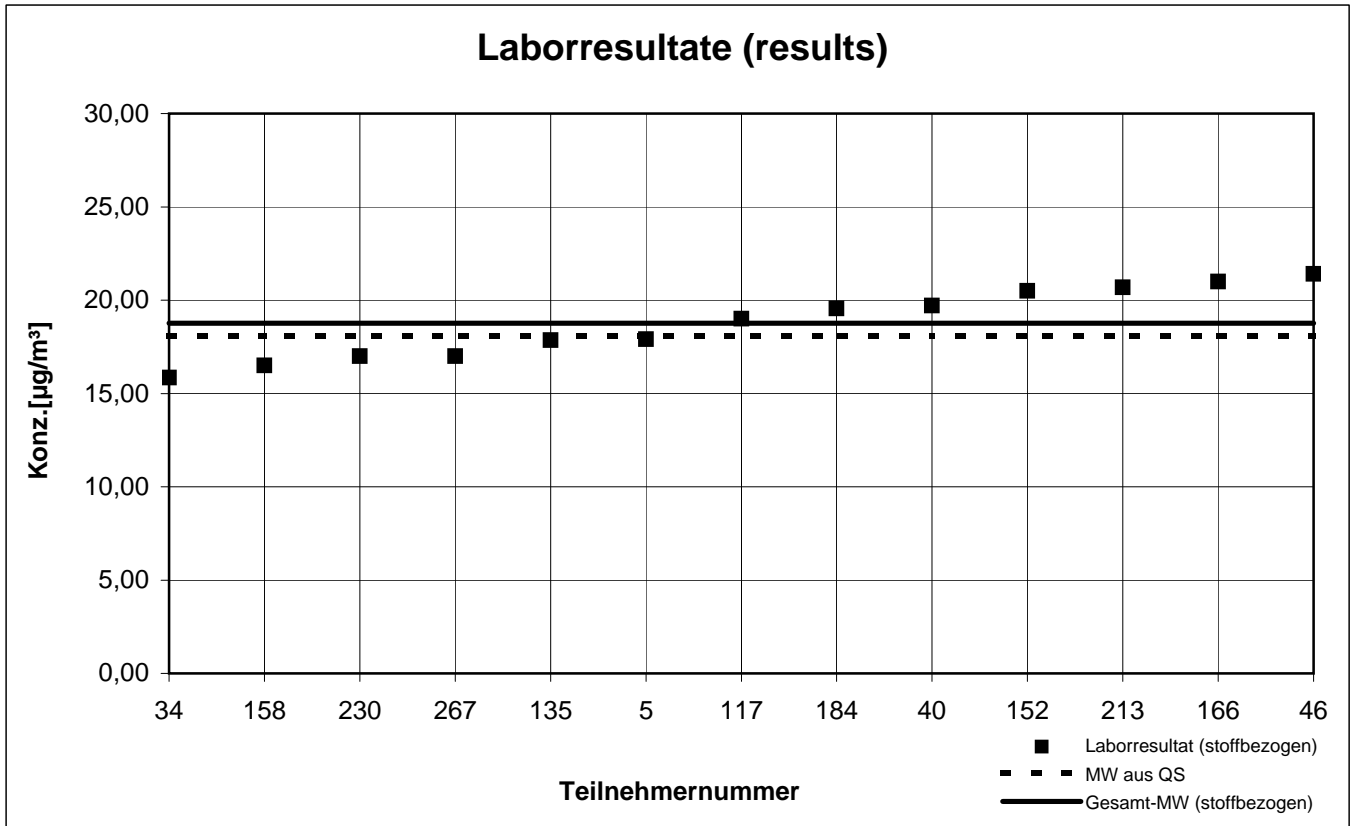
participant number	n-Heptane		Octamethylcyclo-tetrasiloxan		p-Xylene		R(+)-Limonene		Toluene	
	result (µg / m³)	z  - score	result (µg / m³)	z  - score	result (µg / m³)	z  - score	result (µg / m³)	z  - score	result (µg / m³)	z  - score
5	18,19	0,3	152,2		15,32	0,3	47,05		18,90	0,4
34	19,65	0,5	85,85		23,90	5,1	97,20		24,40	2,3
40	19,20	0,3	103,4		15,90	0,1	43,70		20,10	0,2
46	20,20	0,8	82,20		17,60	1,1	53,50		20,30	0,3
117	22,00	1,8	314,0		17,00	0,8	58,00		21,00	0,6
135	15,10	1,9	155,7		13,85	1,2	54,05		16,65	1,6
152	17,30	0,7	80,30		16,30	0,3	49,50		19,00	0,4
158	15,80	1,5	132,9		12,40	2,1	53,40		15,90	2,0
166	26,00	3,9	110,0		18,00	1,4	64,00		22,00	1,1
184	20,48	1,0	108,4		15,79	0,0	58,25		20,27	0,3
213	18,40	0,2	82,55		16,85	0,7	66,08		19,86	0,1
230	21,50	1,5	75,00		15,50	0,2	40,50		20,50	0,4
267	16,50	1,2	101,0		15,00	0,5	49,50		18,00	0,9

marked fields are outliers

	n-Heptane	OMCTS	p-Xylene	R(+)-Limonene	Toluene
mean $c_k$ [µg / m³]	18,69		15,79		19,76
standard deviation $S_k$ [µg / m³]	2,212		1,573		2,204
rel. standard deviation [%]	11,83		9,96		11,15
mean value of control samples [µg / m³]	18,90		14,30		16,40

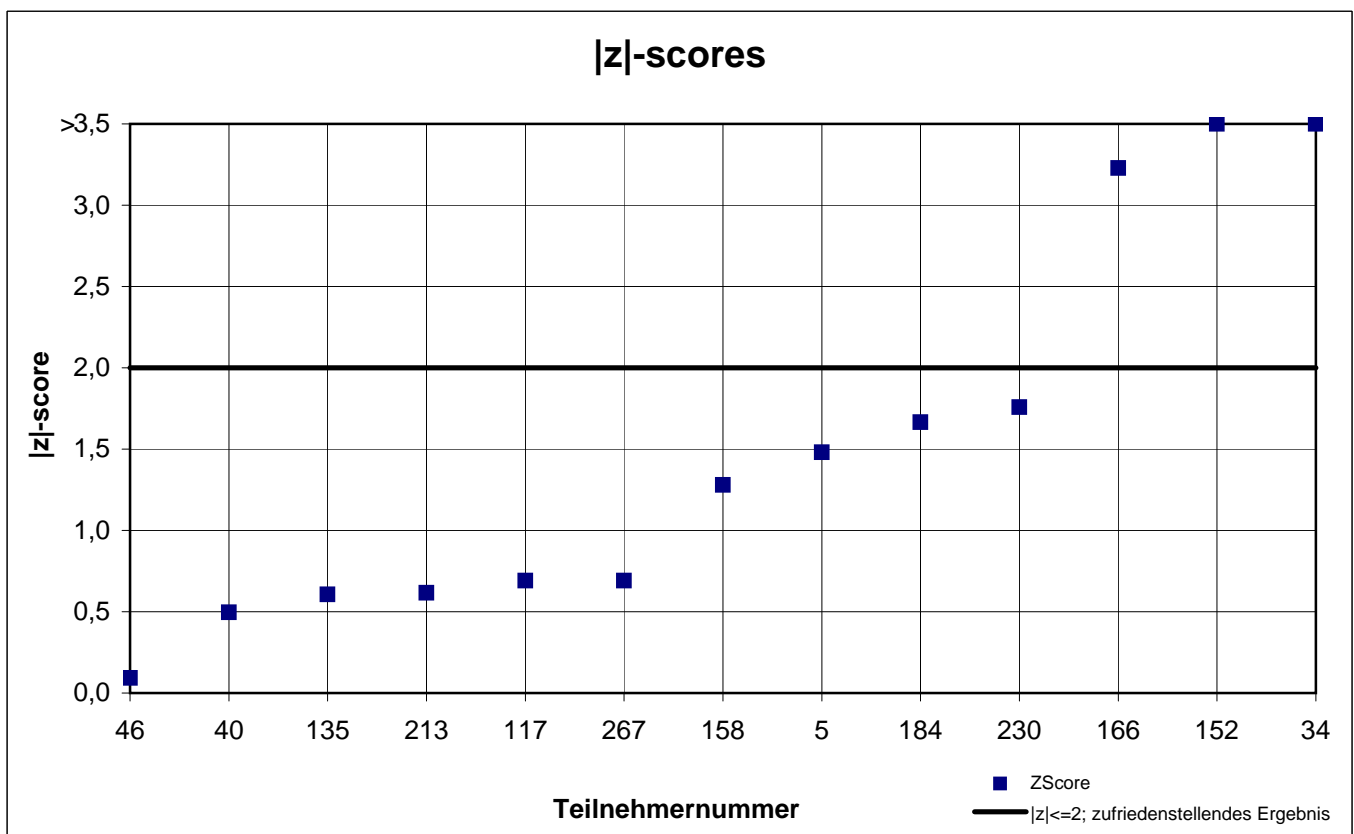
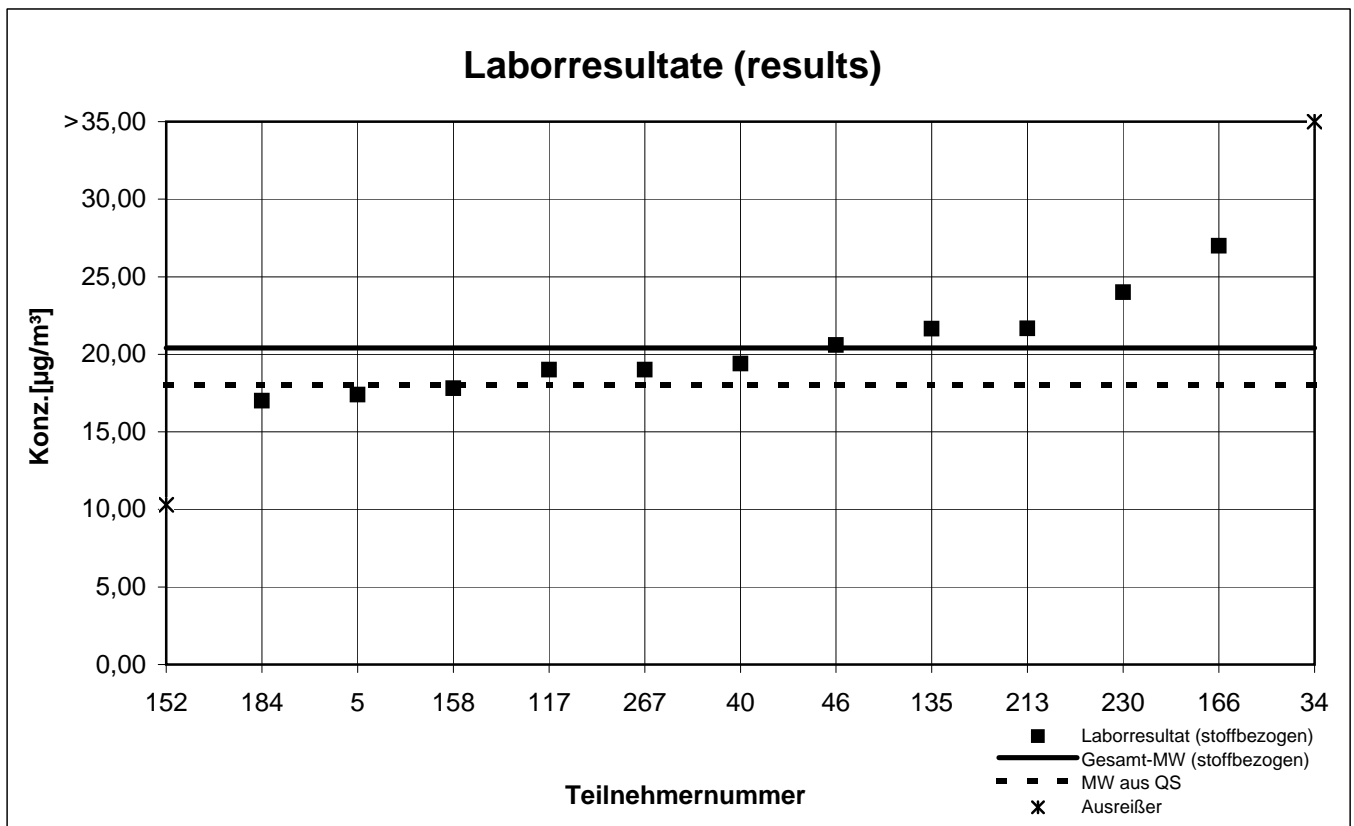
# Probe 1 (sample 1)

## 1,2,3-Trimethylbenzol



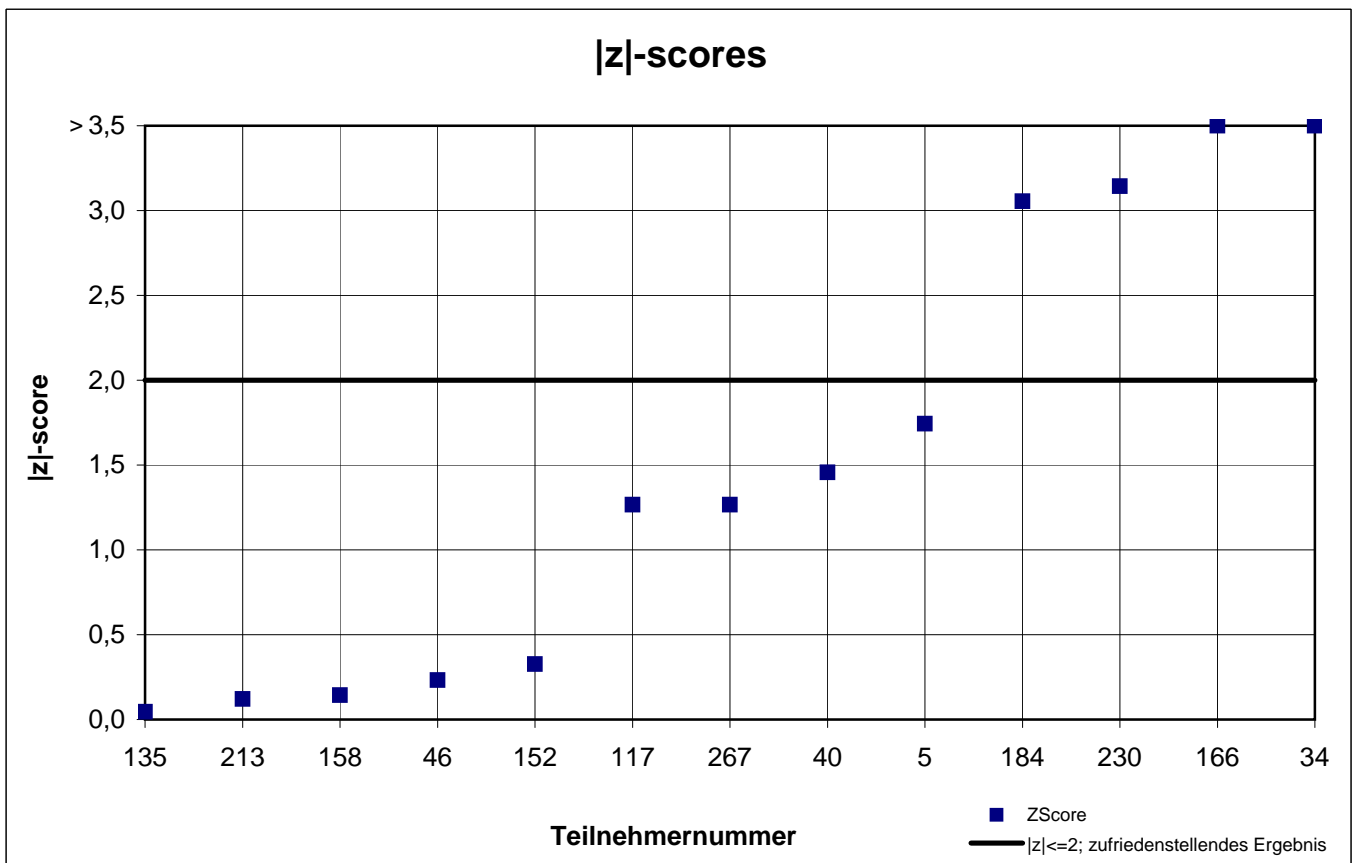
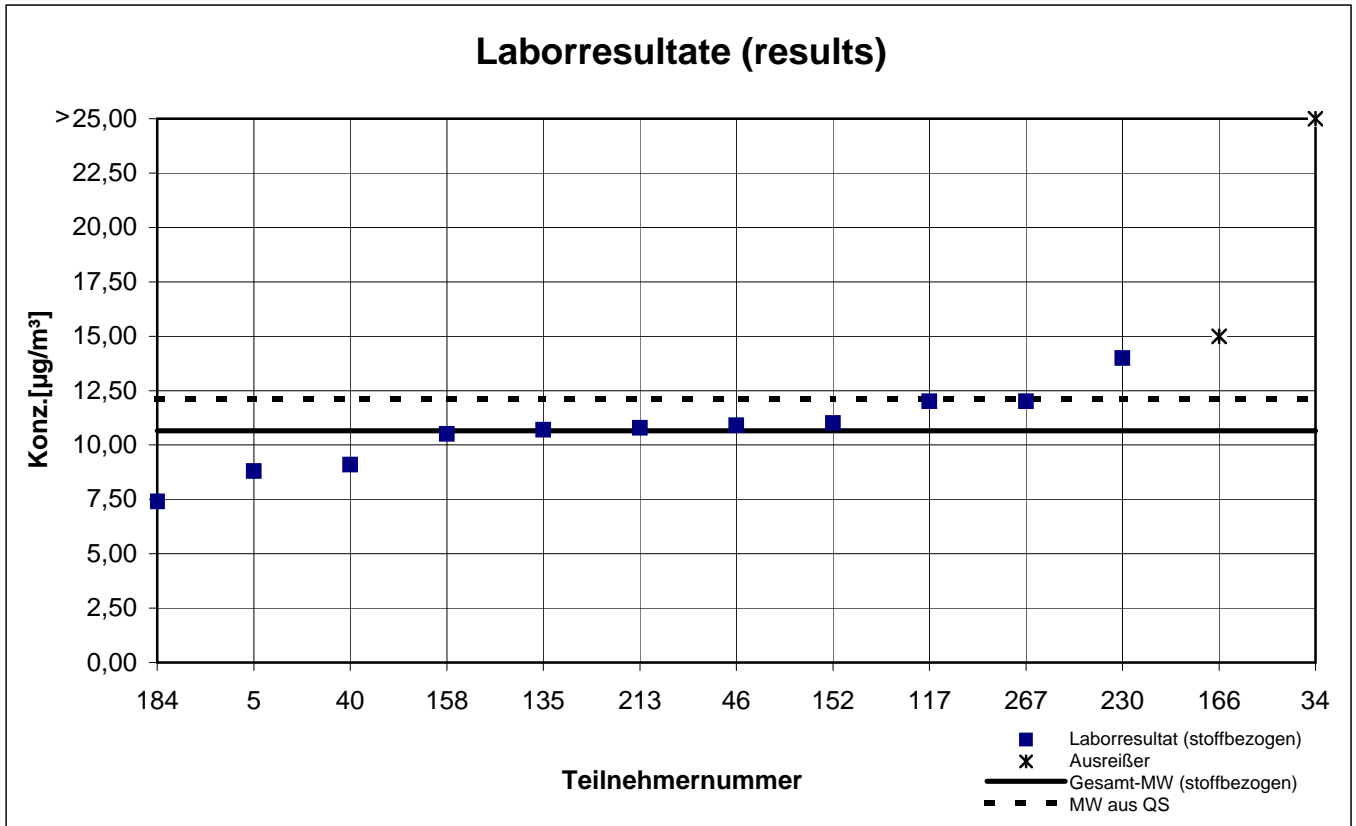
# Probe 1 (sample 1)

## 2-Butoxyethanol



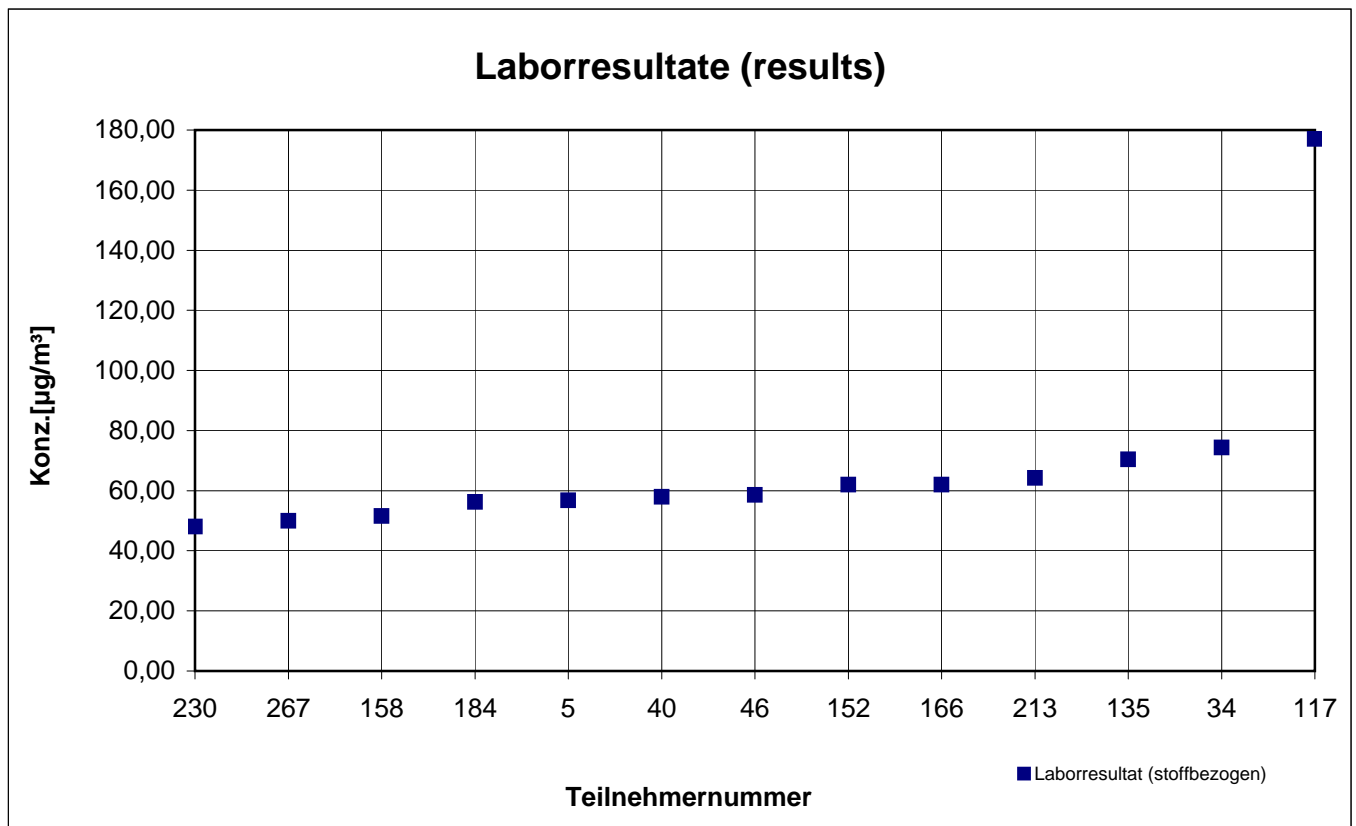
# Probe 1 (sample 1)

## 2-Phenoxyethanol



# Probe 1 (sample 1)

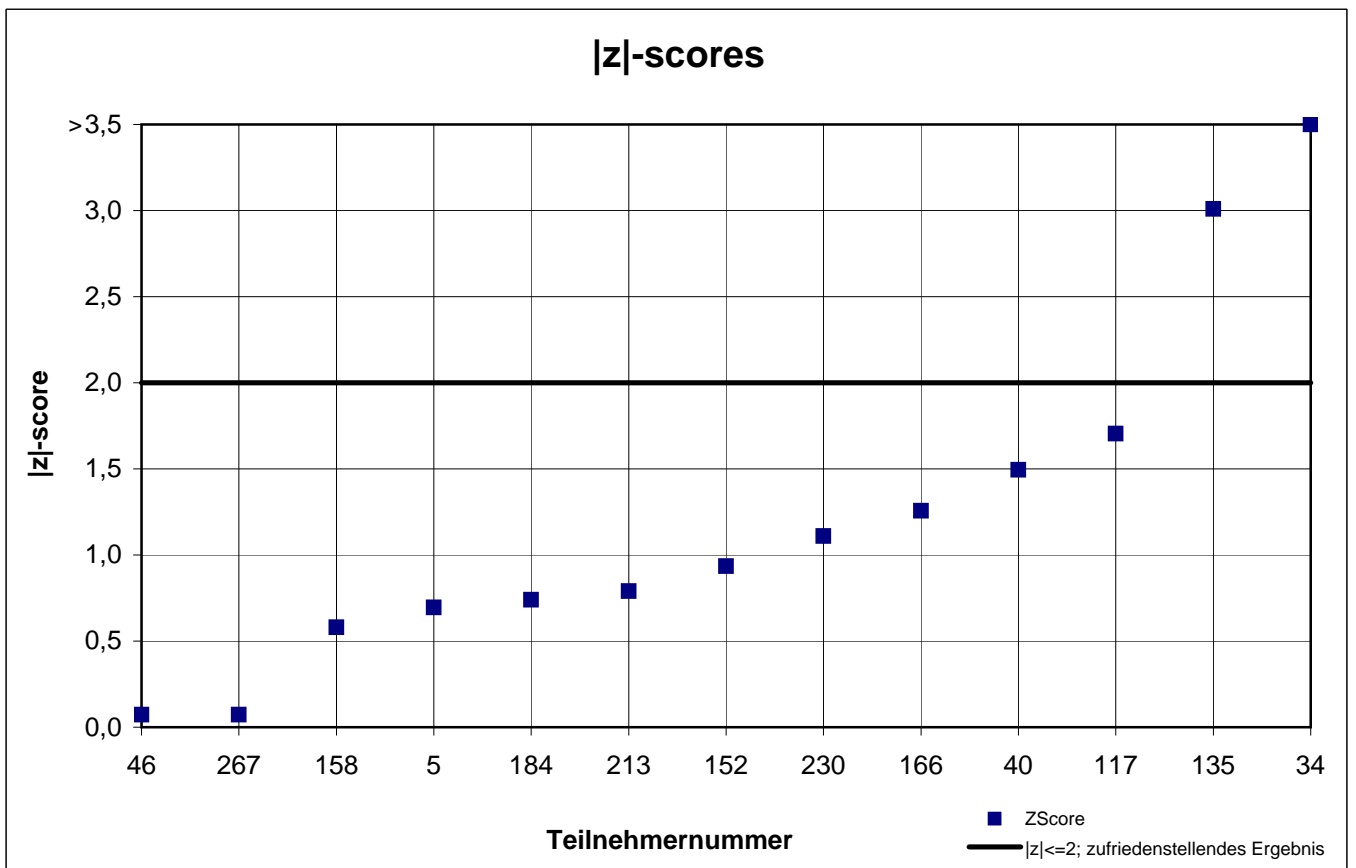
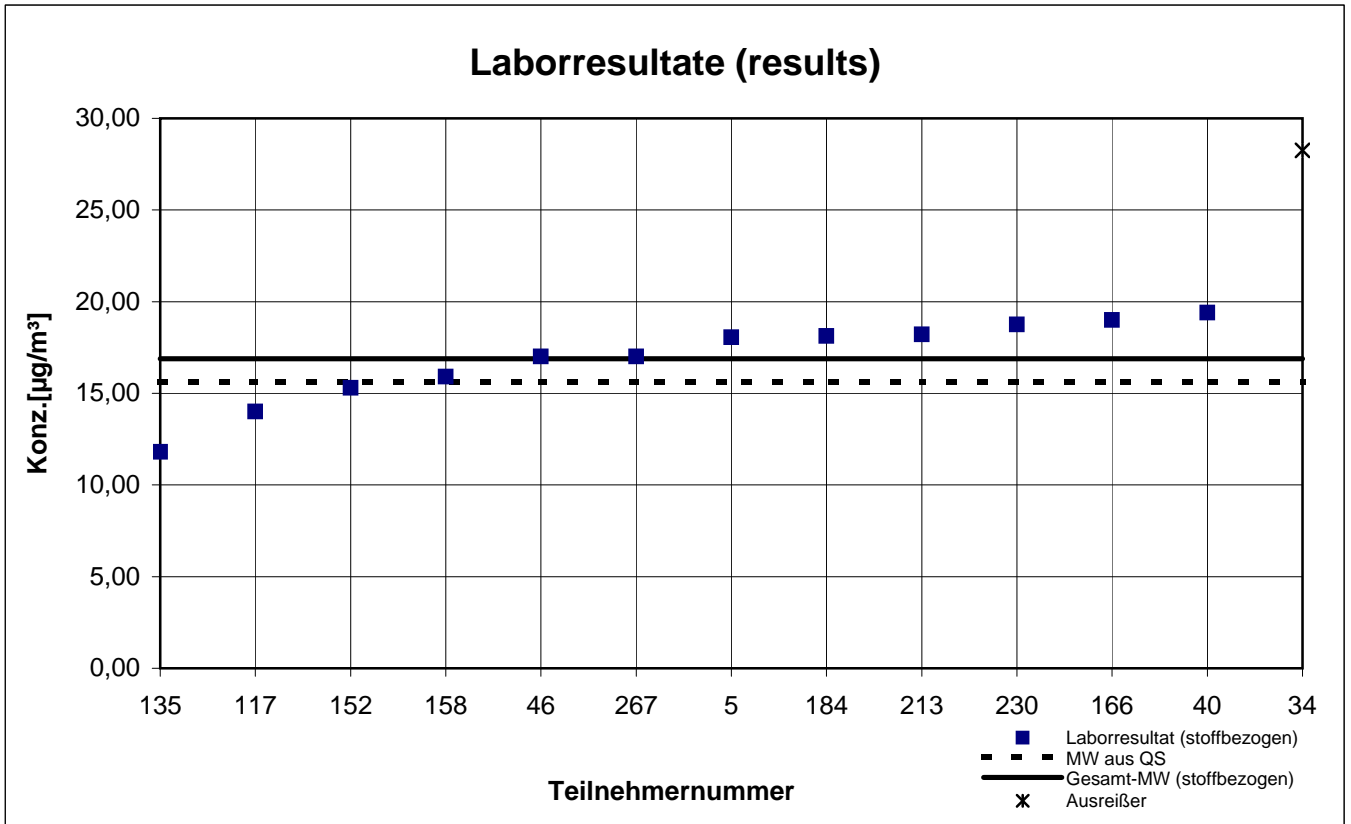
## Dodecan



keine z-score-Auswertung

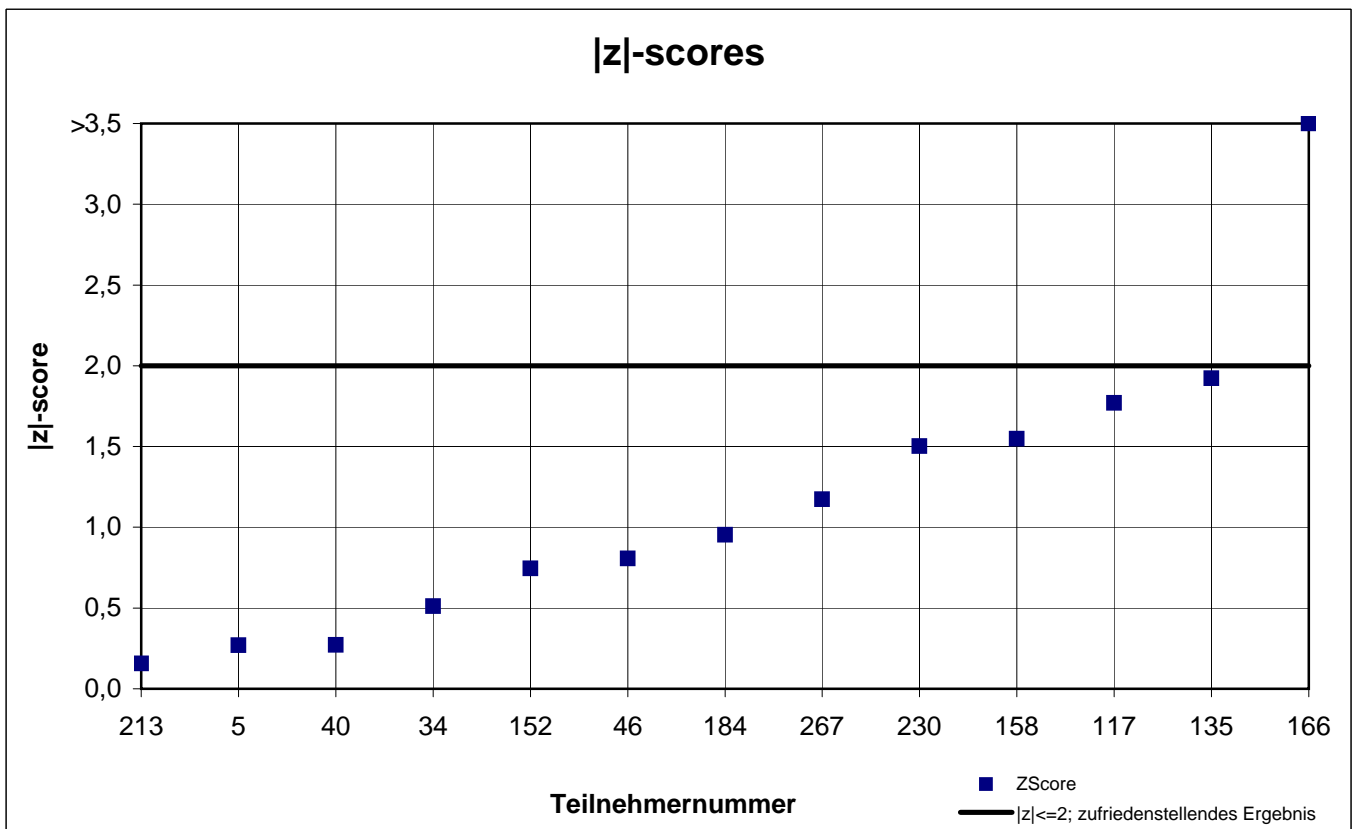
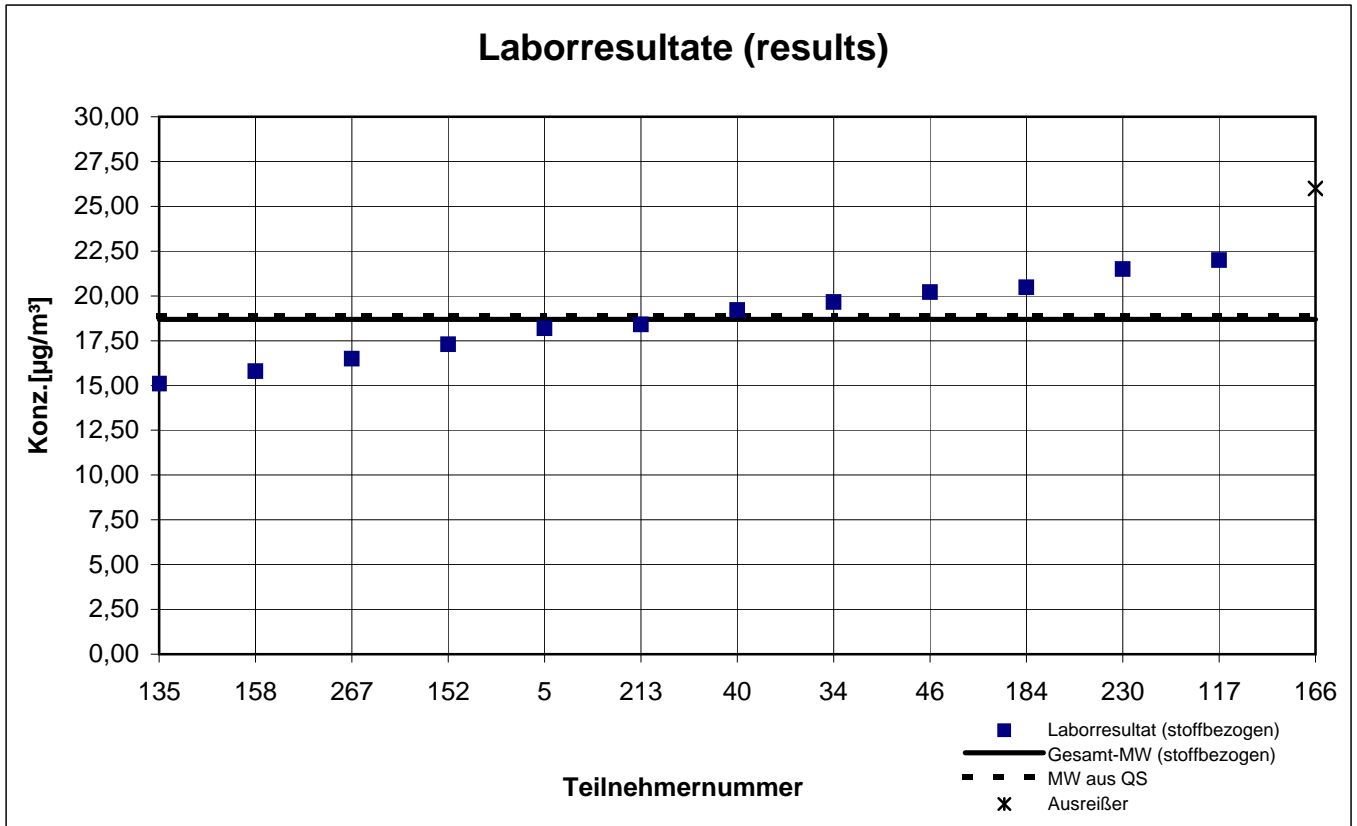
# Probe 1 (sample 1)

## Ethylacetat



# Probe 1 (sample 1)

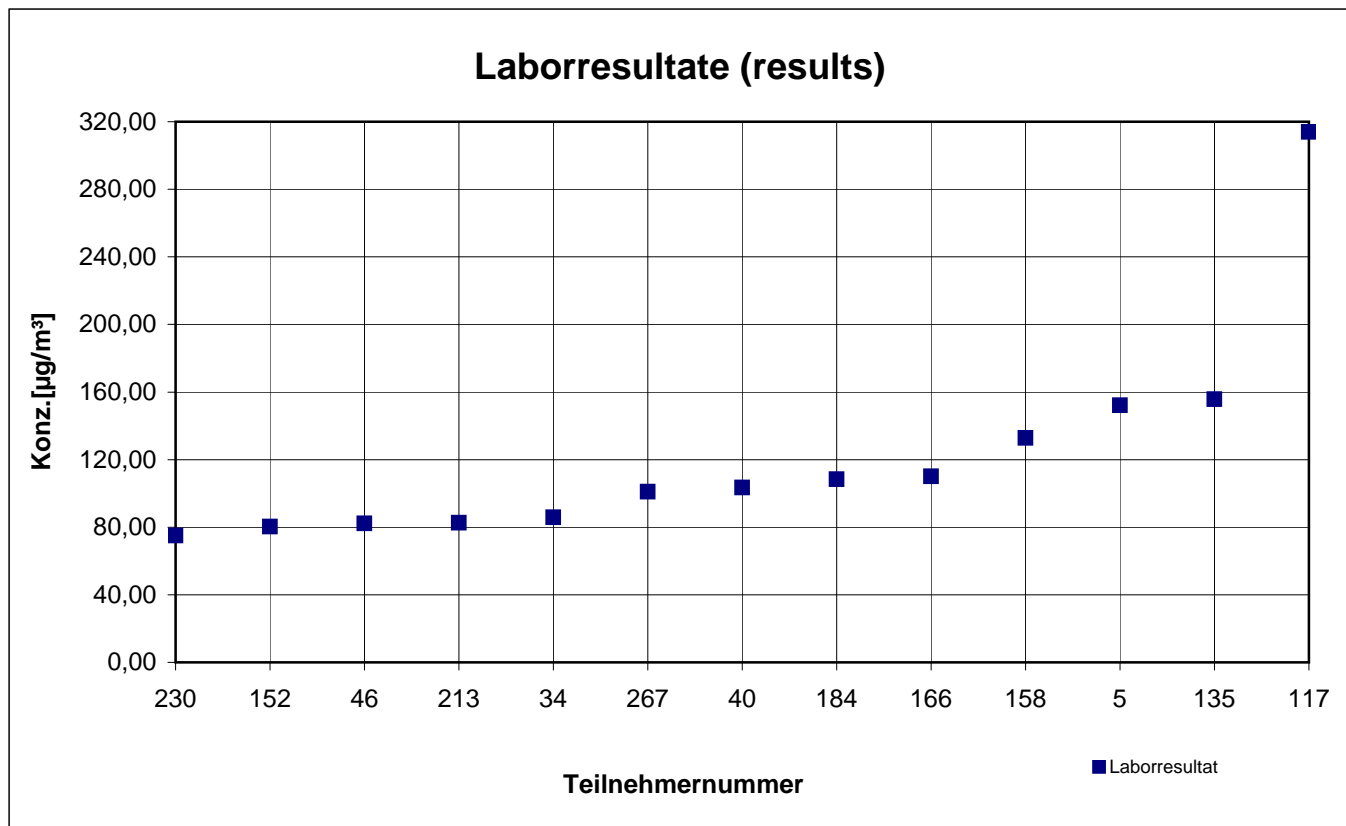
## n-Heptan





# Probe 1 (sample 1)

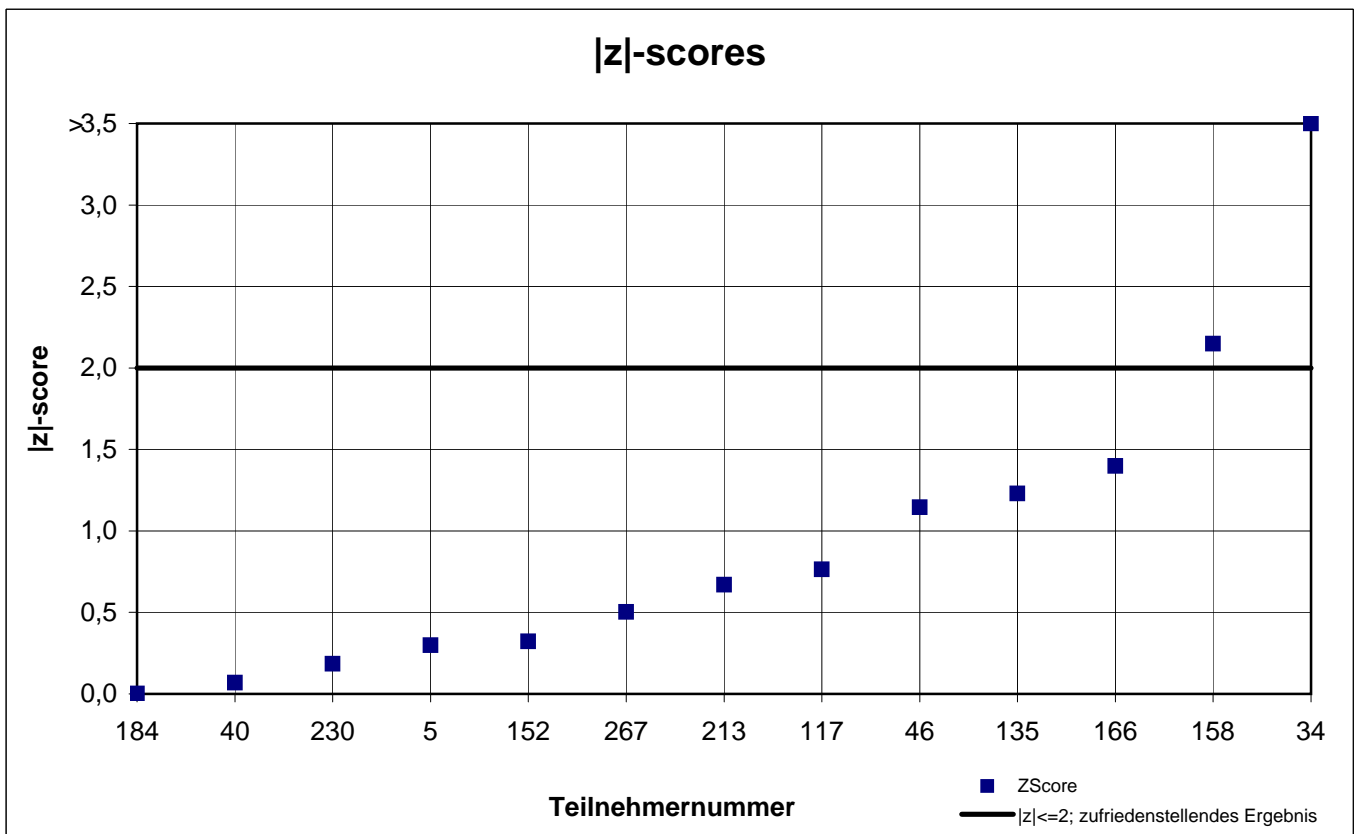
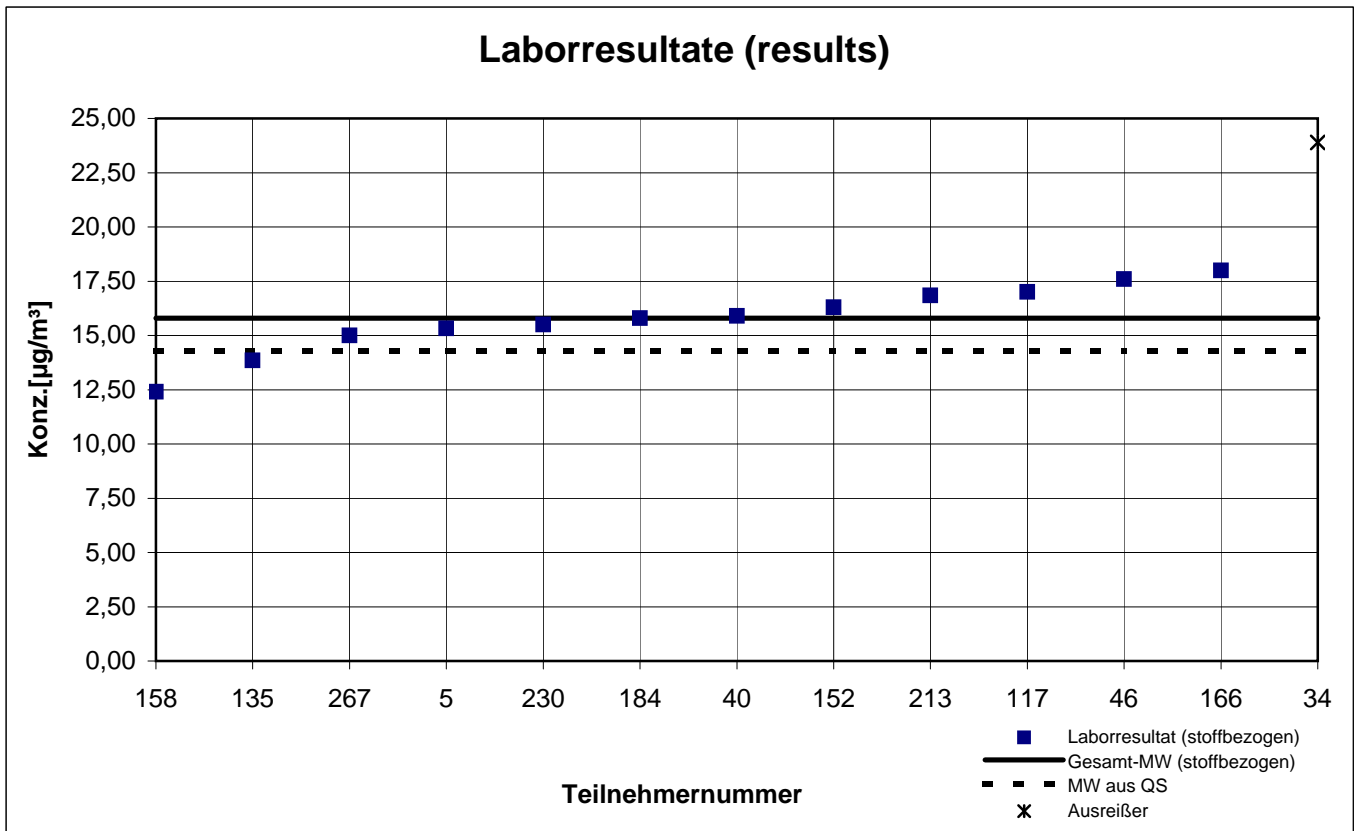
## Octamethylcyclotetrasiloxan



keine z-score-Auswertung

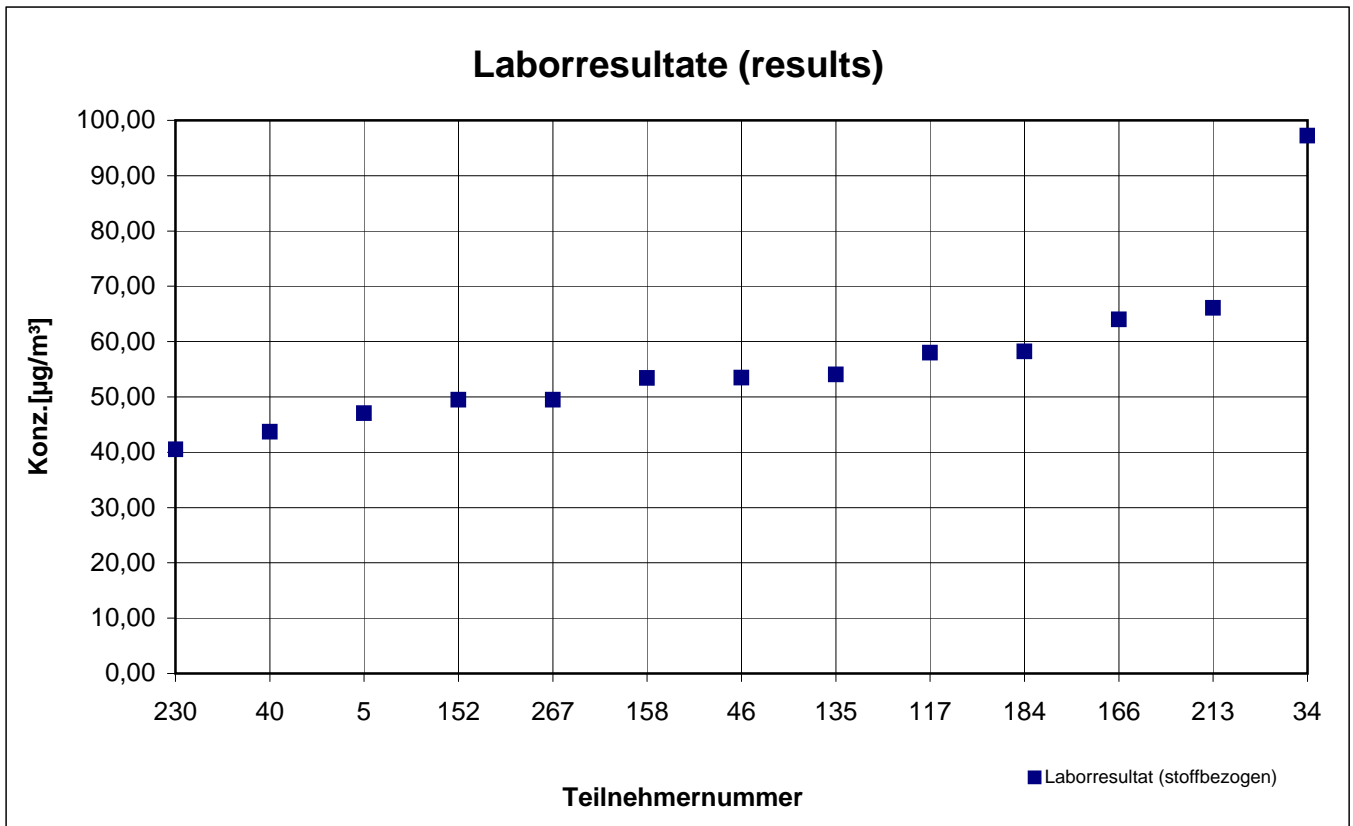
# Probe 1 (sample 1)

## p-Xylol



# Probe 1 (sample 1)

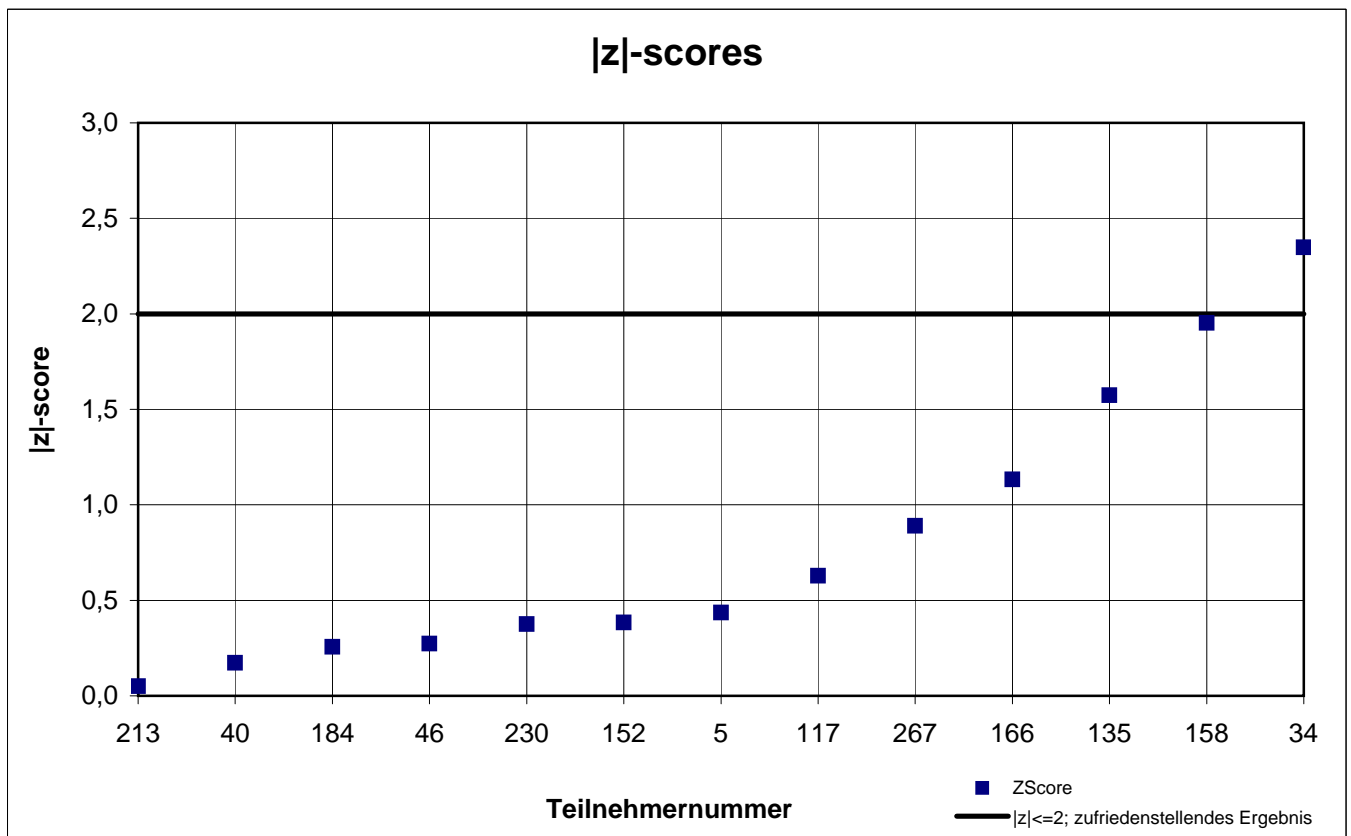
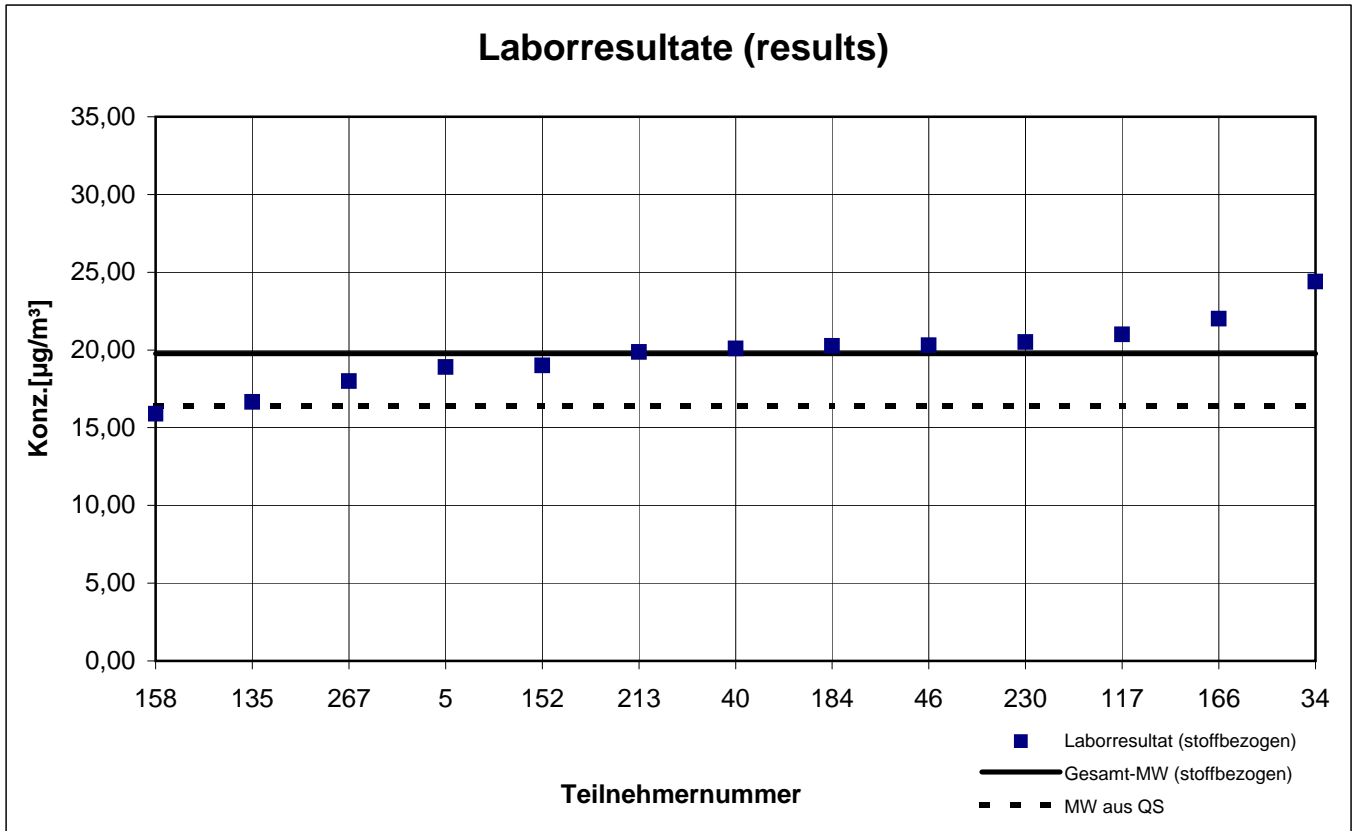
## R(+)-Limonen



keine z-score-Auswertung

# Probe 1 (sample 1)

## Toluol



## sample 2 - results (part 1)

participant number	1,2,3-Trimethylbenzene		2-Butoxyethanol		2-Phenoxyethanol		Dodecan		Ethyl acetate	
	result ( $\mu\text{g} / \text{m}^3$ )	z  - score	result ( $\mu\text{g} / \text{m}^3$ )	z  - score	result ( $\mu\text{g} / \text{m}^3$ )	z  - score	result ( $\mu\text{g} / \text{m}^3$ )	z  - score	result ( $\mu\text{g} / \text{m}^3$ )	z  - score
5	38,78	0,1	36,54	1,7	11,88	2,8	45,39		38,52	1,0
34	26,30	3,2	75,65	7,2	103,9	53,2	68,50		37,50	0,7
40	43,00	1,2	44,70	0,2	11,90	2,8	55,80		37,80	0,8
46	43,40	1,3	43,40	0,1	18,60	1,3	59,20		36,60	0,4
117	38,00	0,1	45,00	0,3	15,00	0,9	119,0		28,00	2,0
135	40,90	0,6	56,00	2,8	17,50	0,7	55,15		34,70	0,1
152	42,50	1,1	22,00	5,0	16,80	0,2	55,30		33,30	0,5
158	38,20	0,1	31,50	2,8	15,40	0,6	48,10		35,70	0,2
166	43,00	1,2	49,00	1,2	16,00	0,3	70,00		37,00	0,5
184	44,82	1,7	47,76	0,9	14,27	1,3	66,79		39,43	1,2
213	33,48	1,3	38,30	1,3	17,15	0,4	48,56		32,40	0,8
230	30,00	2,2	49,50	1,3	20,50	2,5	38,50		29,50	1,6
267	37,00	0,4	41,00	0,7	22,00	3,4	67,00		36,50	0,4

marked fields are outliers

	1,2,3-Trimethylbenzene	2-Butoxyethanol	2-Phenoxyethanol	Dodecane	Ethyl acetate
mean $c_k$ [ $\mu\text{g} / \text{m}^3$ ]	38,41	43,88	16,42		35,15
standard deviation $S_k$ [ $\mu\text{g} / \text{m}^3$ ]	5,591	6,844	3,064		3,465
rel. standard deviation [%]	14,55	15,60	18,66		9,86
mean value of control samples [ $\mu\text{g} / \text{m}^3$ ]	39,00	39,50	16,50		31,60

sample 2 - results (part 2)

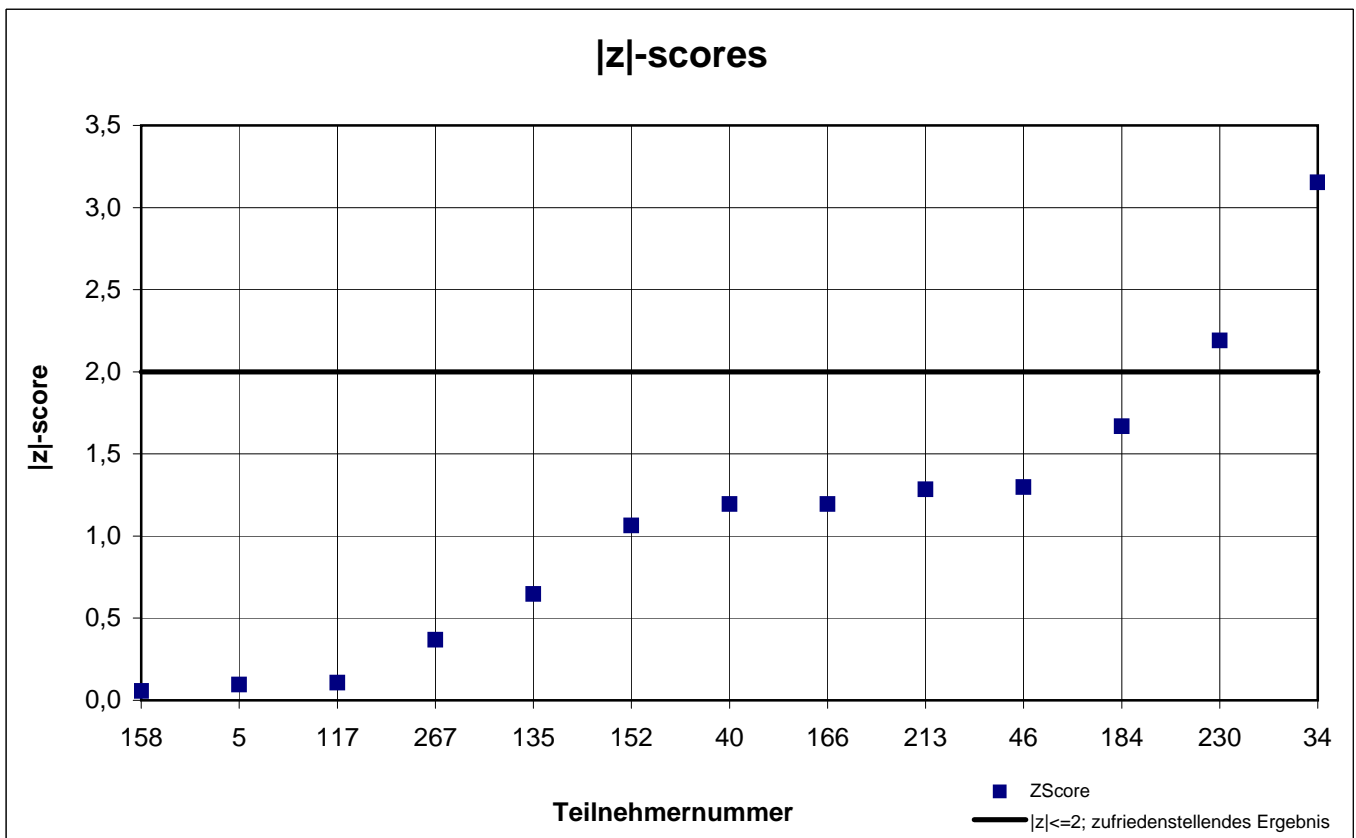
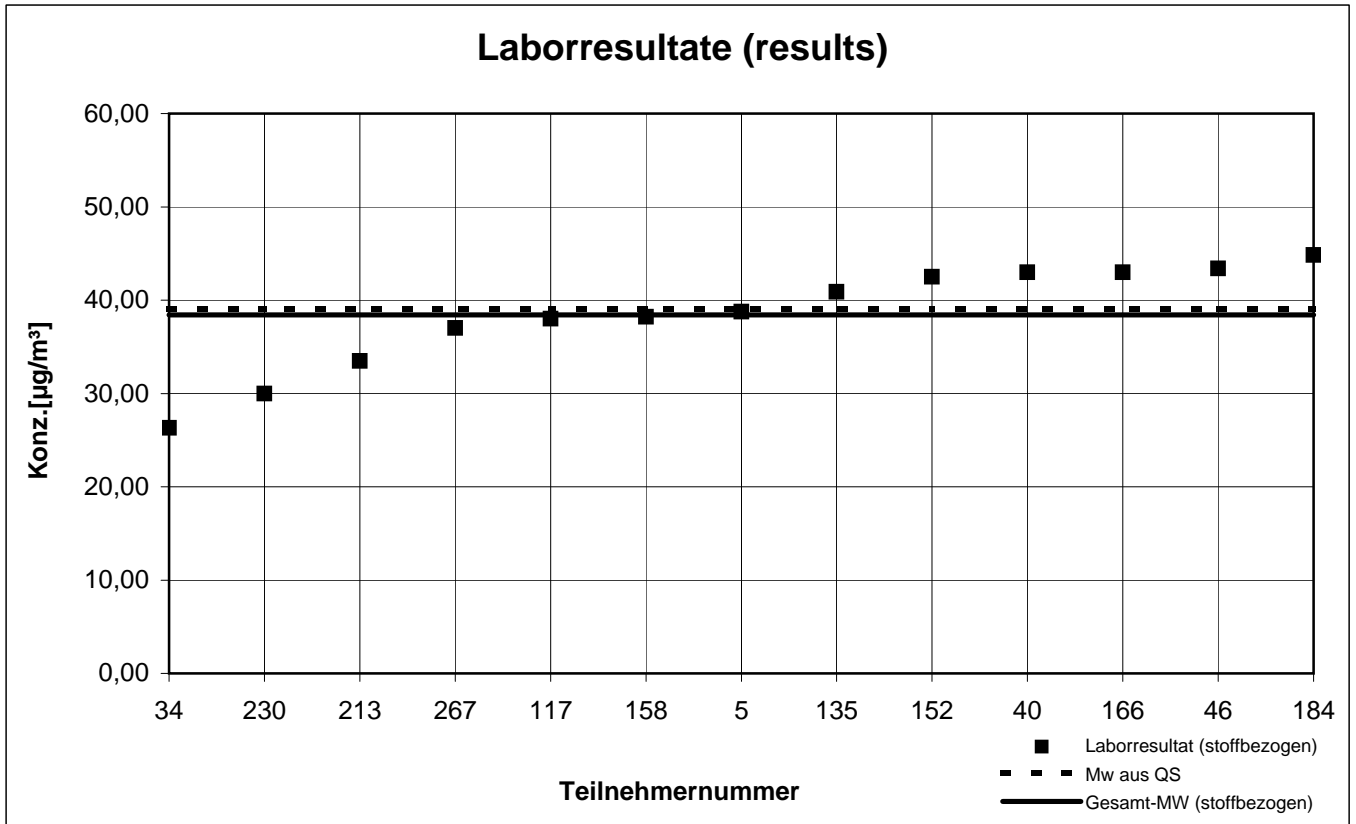
participant number	n-Heptane		Octamethylcyclo-tetrasiloxan		p-Xylene		R(+)-Limonene		Toluene	
	result ( $\mu\text{g} / \text{m}^3$ )	z  - score	result ( $\mu\text{g} / \text{m}^3$ )	z  - score	result ( $\mu\text{g} / \text{m}^3$ )	z  - score	result ( $\mu\text{g} / \text{m}^3$ )	z  - score	result ( $\mu\text{g} / \text{m}^3$ )	z  - score
5	38,45	0,1	75,92	0,4	33,00	0,2	40,44	1,0	41,28	0,0
34	42,15	1,1	54,50	2,6	43,05	2,8	93,30	10,7	46,05	1,2
40	38,50	0,1	88,40	2,1	34,80	0,4	43,80	0,3	42,50	0,3
46	40,40	0,6	62,70	1,4	36,50	0,9	46,80	0,4	42,90	0,4
117	58,00	5,3	85,00	1,6	26,00	2,3	49,00	0,9	47,00	1,4
135	37,20	0,2	84,95	1,6	34,05	0,1	46,30	0,3	41,65	0,1
152	35,80	0,6	67,30	0,8	32,80	0,2	40,80	0,9	39,50	0,4
158	36,30	0,4	74,00	0,1	30,90	0,8	49,20	0,9	39,00	0,5
166	52,00	3,7	80,00	0,9	36,00	0,7	58,00	2,9	46,00	1,2
184	42,53	1,2	88,96	2,2	36,46	0,9	50,83	1,3	45,31	1,0
213	32,03	1,6	59,55	1,9	28,59	1,5	35,78	2,1	33,48	1,9
230	37,50	0,1	49,00	3,3	29,50	1,2	34,50	2,3	29,50	2,8
267	37,00	0,3	81,50	1,1	34,50	0,3	45,00	0,0	41,50	0,1

marked fields are outliers

	n-Heptane	OMCTS	p-Xylene	R(+)-Limonene	Toluene
mean $c_k$ [ $\mu\text{g} / \text{m}^3$ ]	37,99	73,21	33,55	45,04	41,21
standard deviation $S_k$ [ $\mu\text{g} / \text{m}^3$ ]	2,987	13,374	4,301	6,582	5,051
rel. standard deviation [%]	7,86	18,27	12,82	14,62	12,26
mean value of control samples [ $\mu\text{g} / \text{m}^3$ ]	39,90	75,00	30,70	42,30	38,90

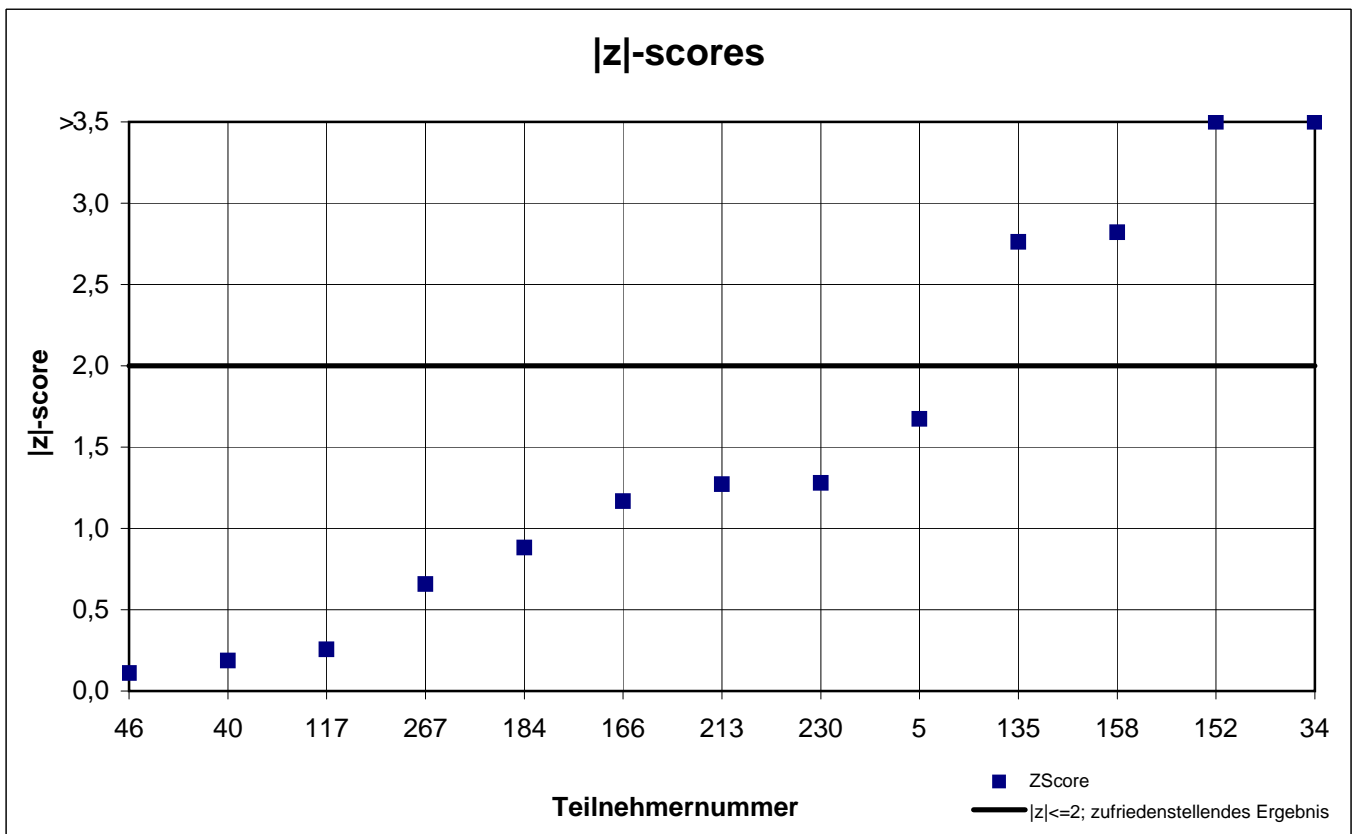
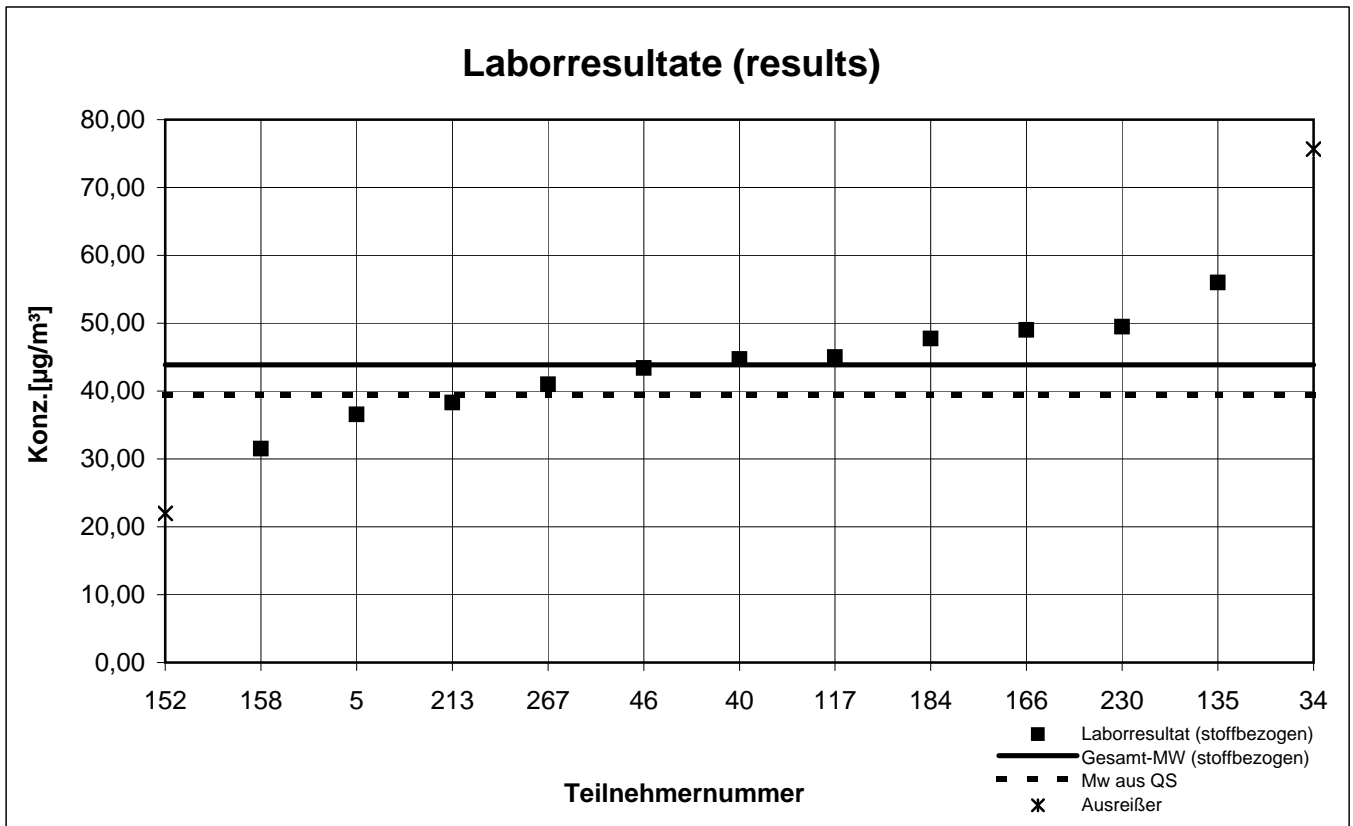
# Probe 2 (sample 2)

## 1,2,3-Trimethylbenzol



# Probe 2 (sample 2)

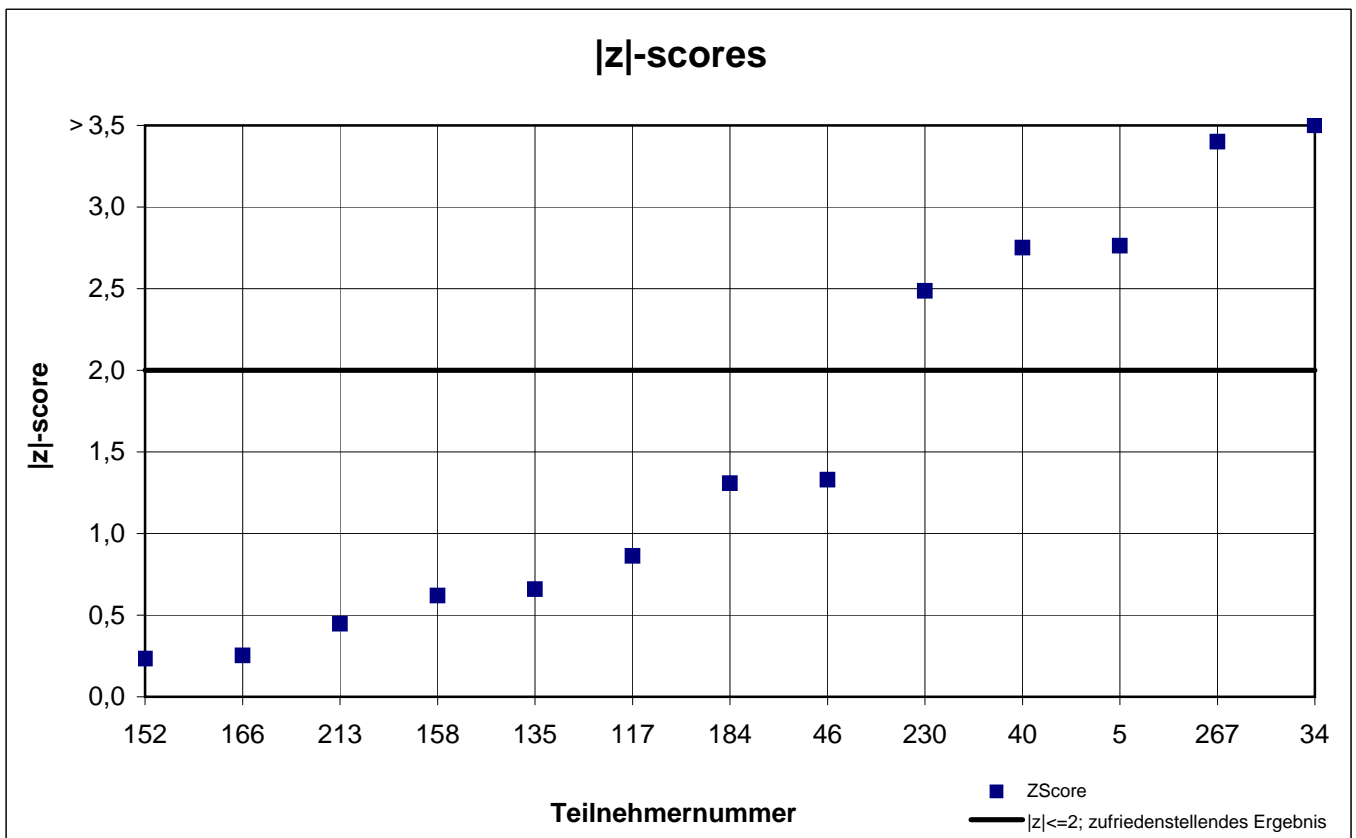
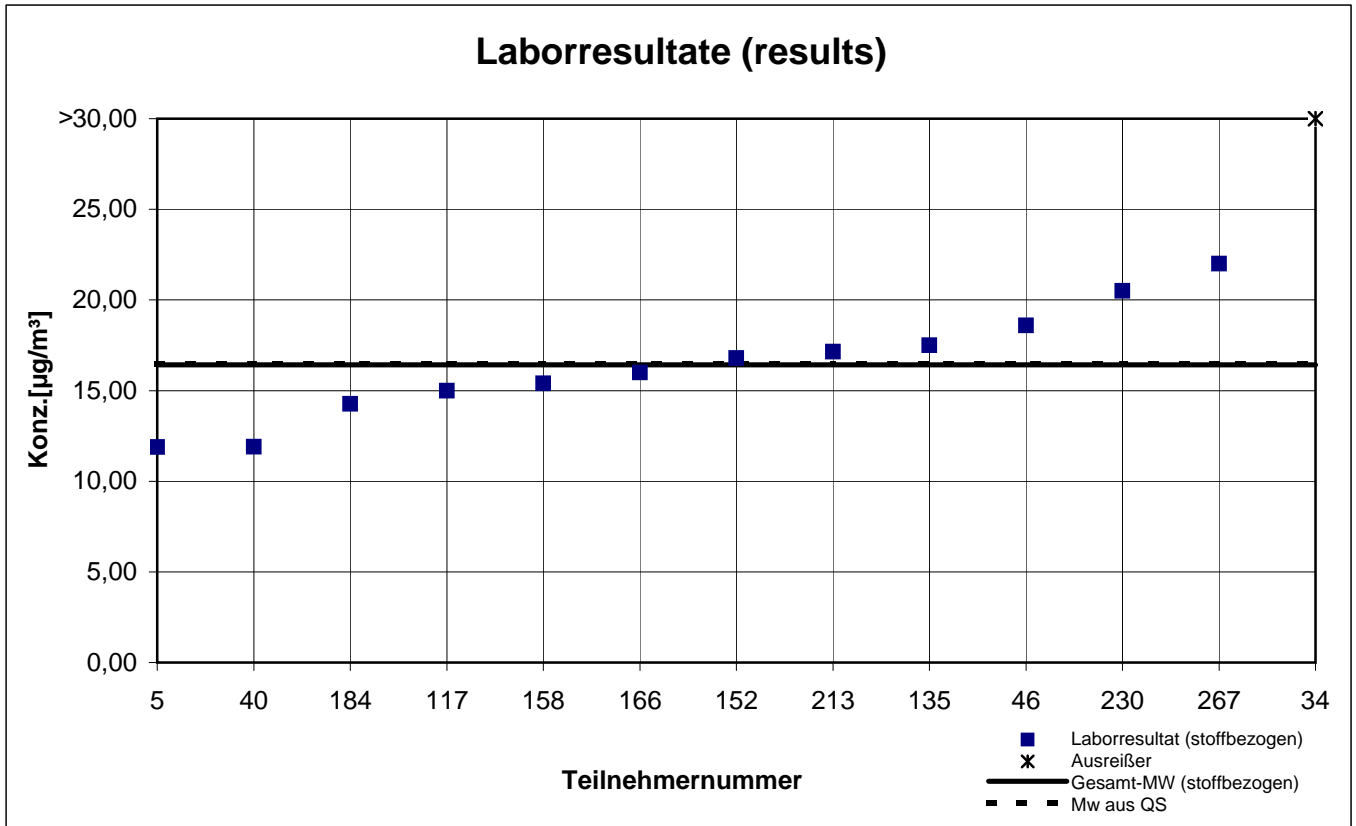
## 2-Butoxyethanol





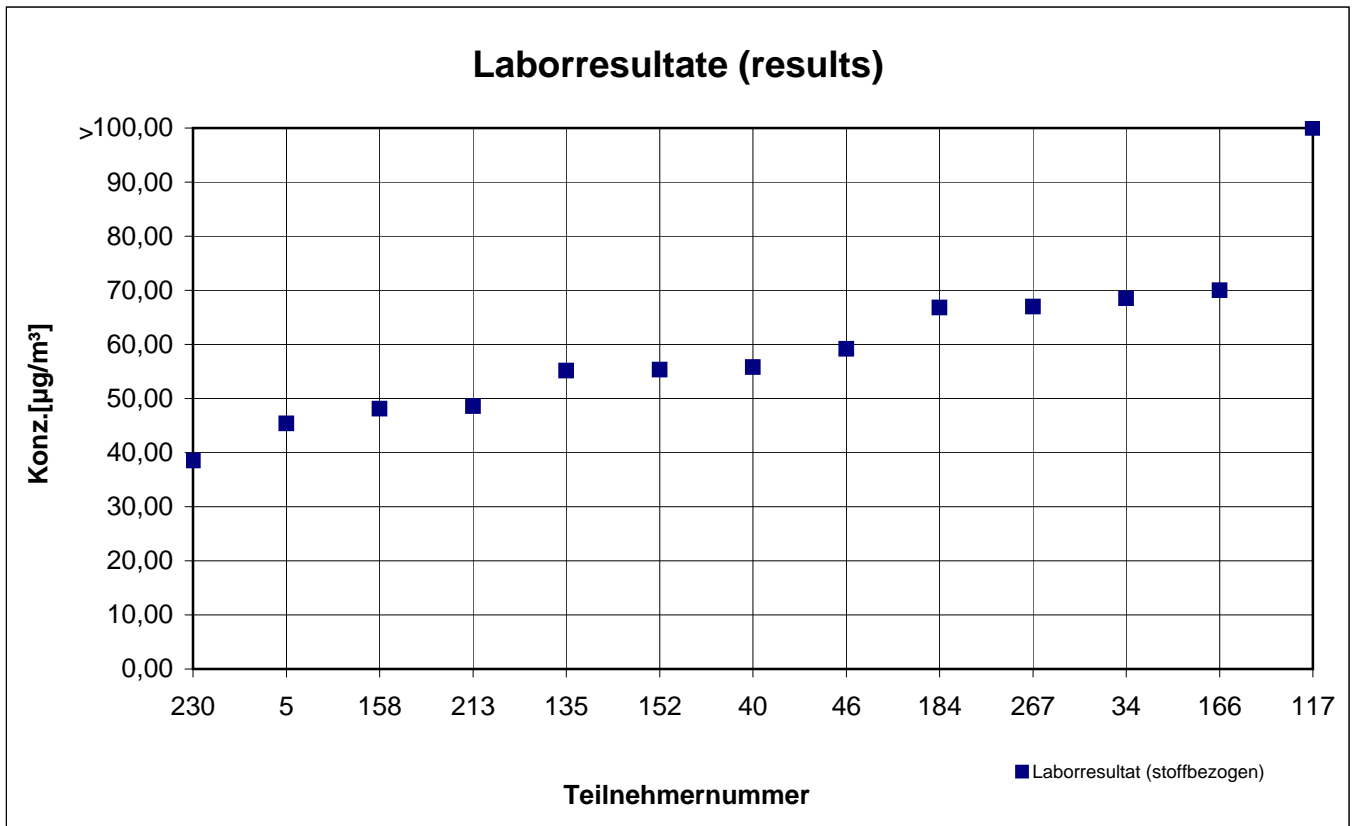
# Probe 2 (sample 2)

## 2-Phenoxyethanol



# Probe 2 (sample 2)

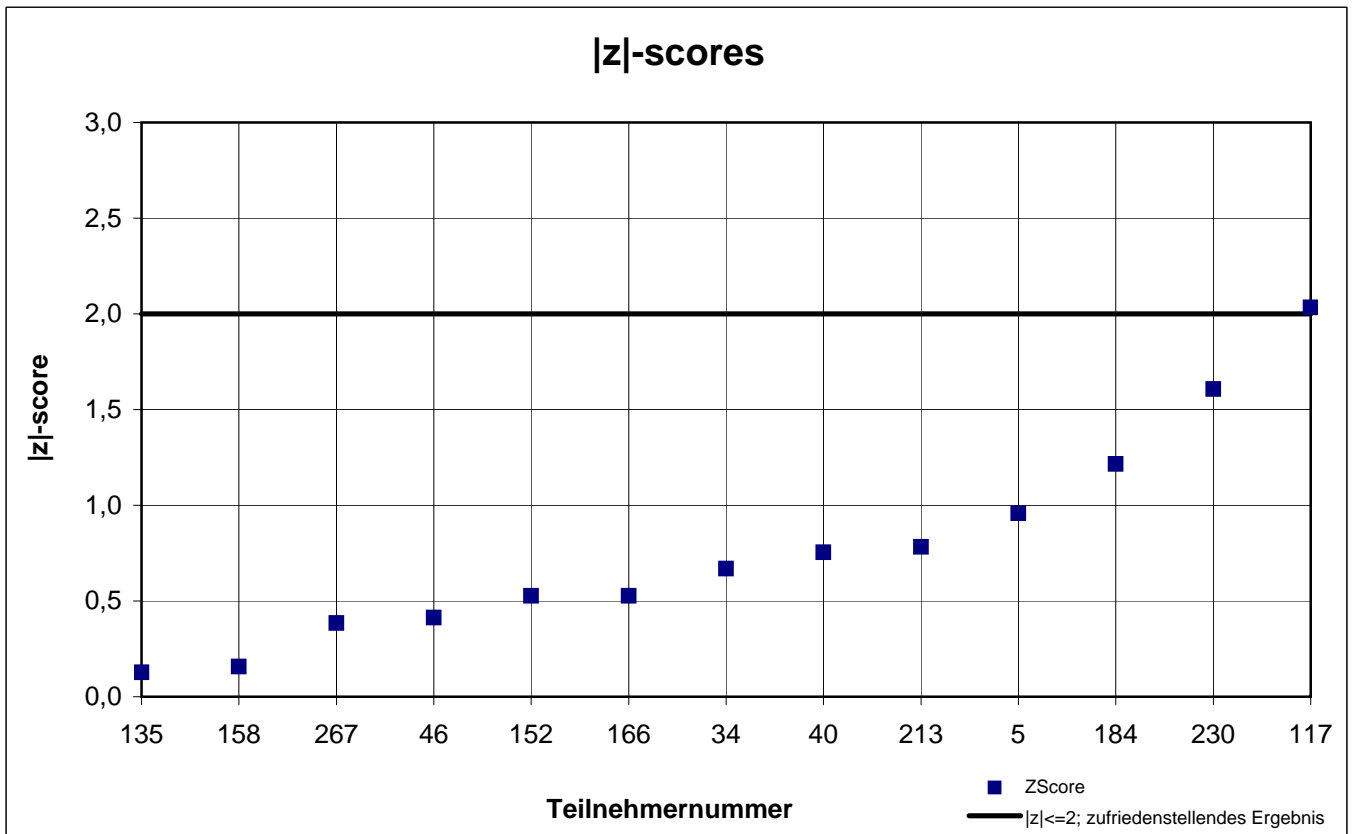
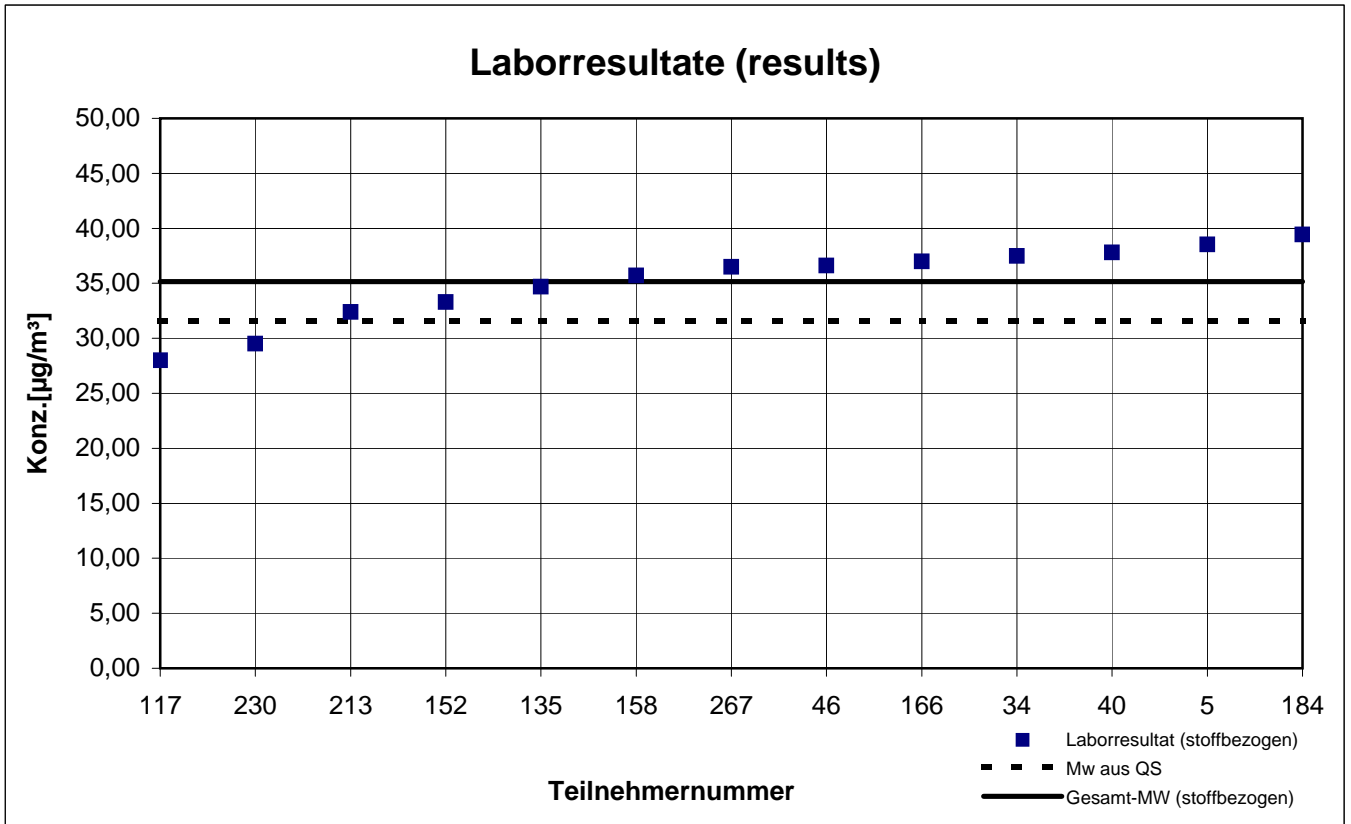
## Dodecan



keine z-score-Auswertung

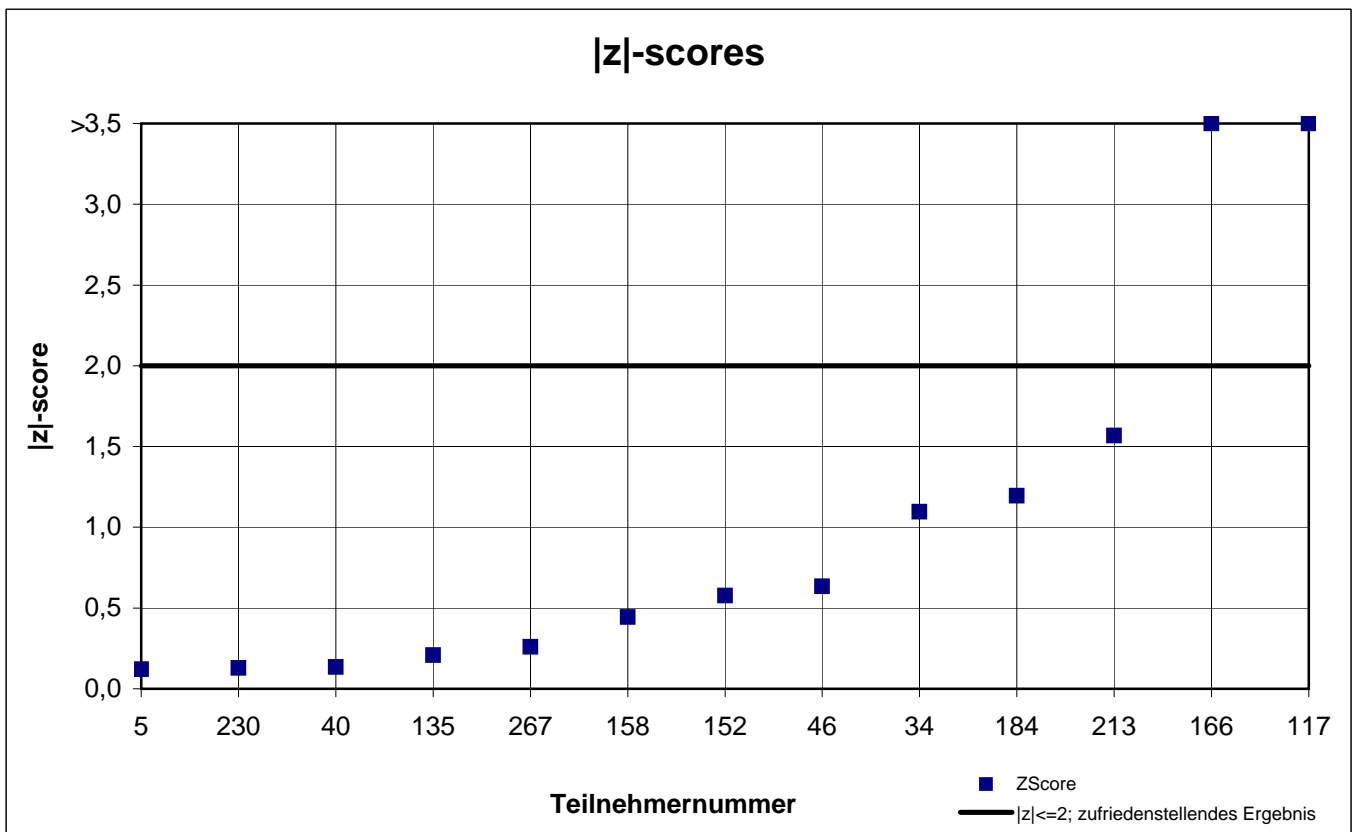
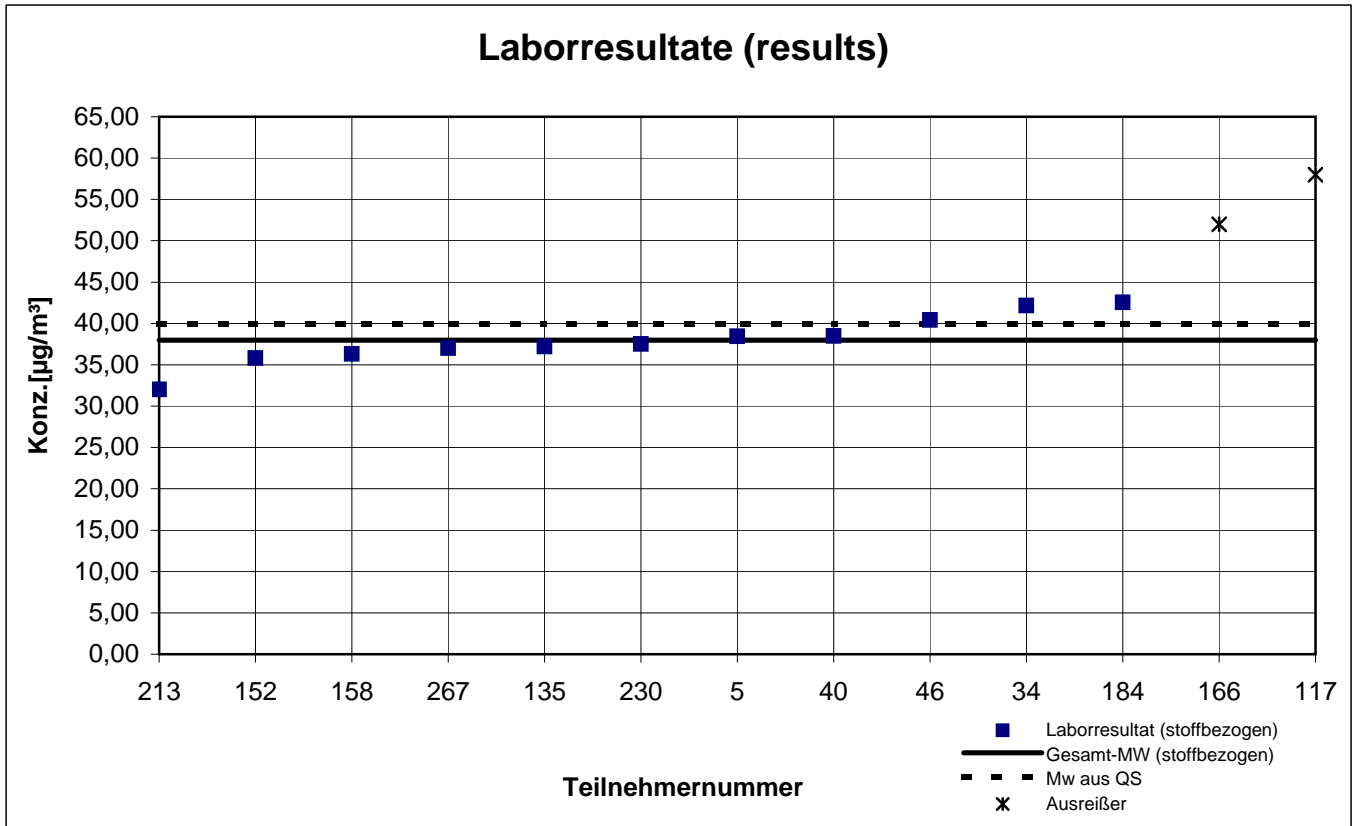
# Probe 1 (sample 1)

## Ethylacetat



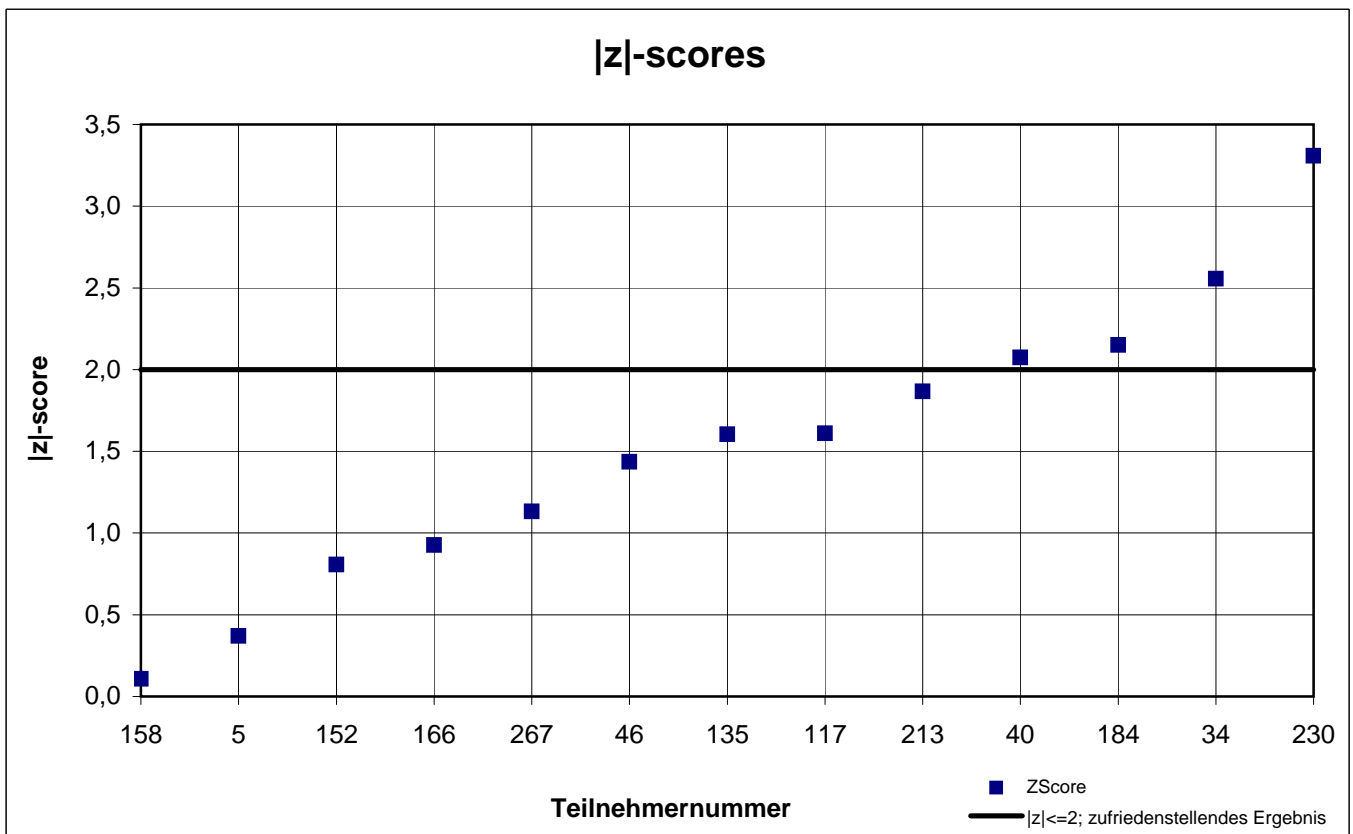
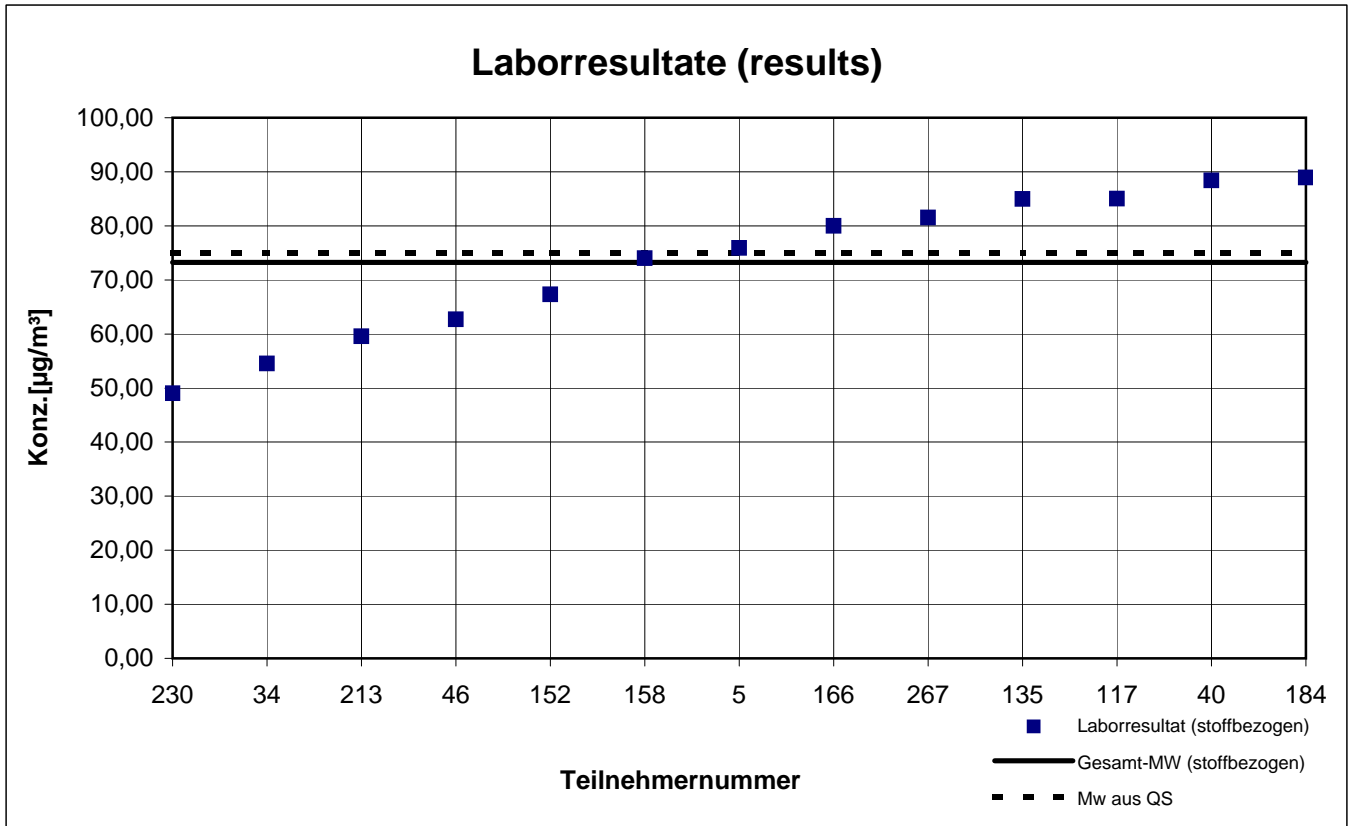
# Probe 1 (sample 1)

## n-Heptan



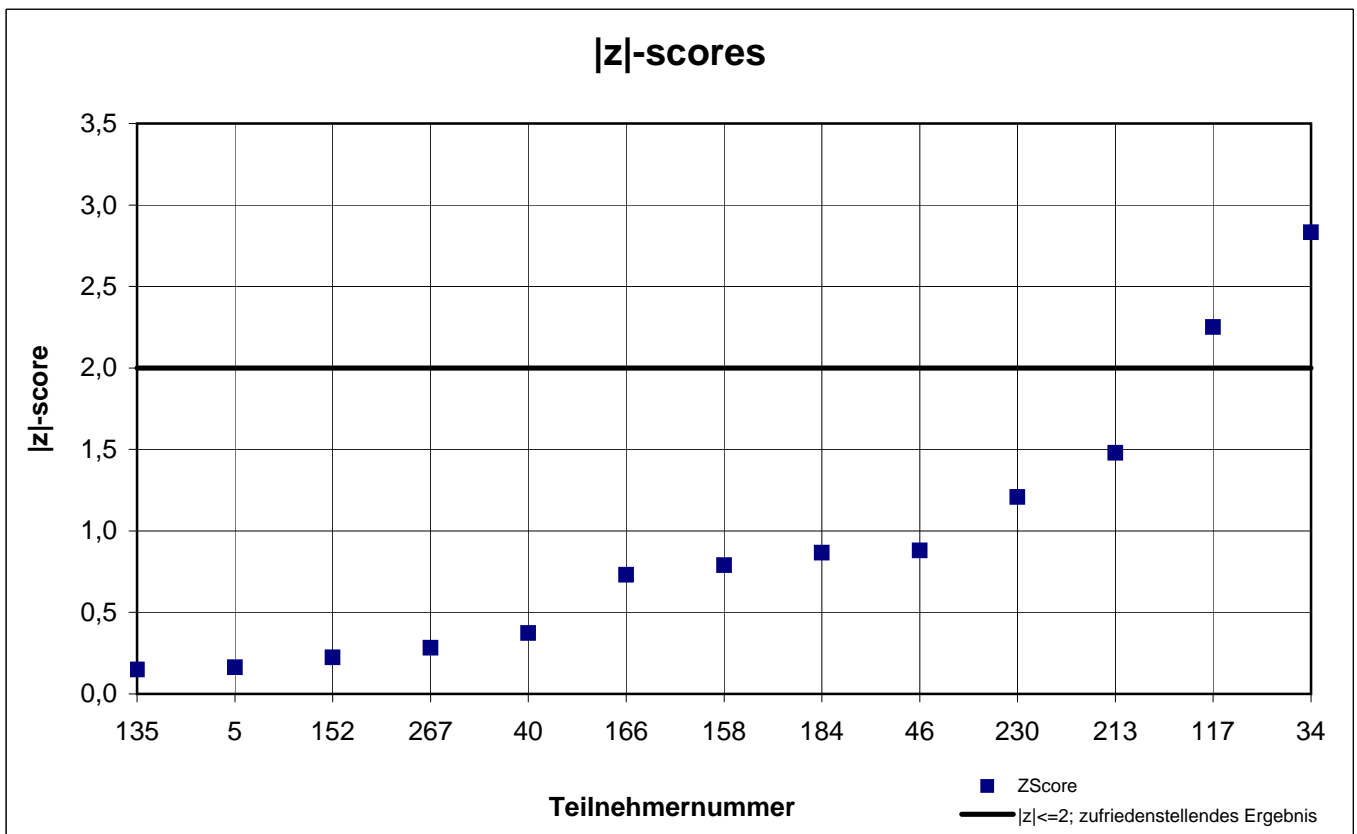
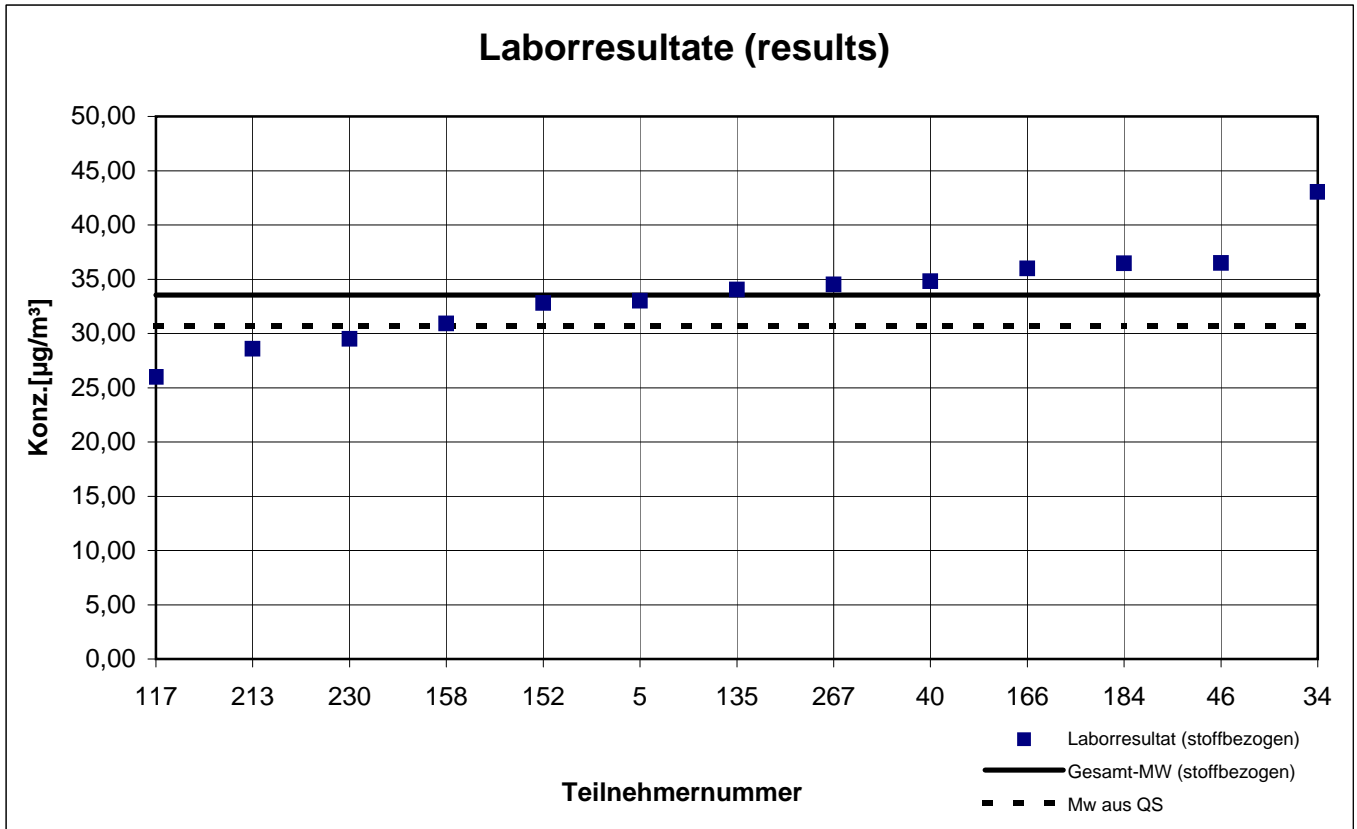
# Probe 2 (sample 2)

## Octamethylcyclotetrasiloxan



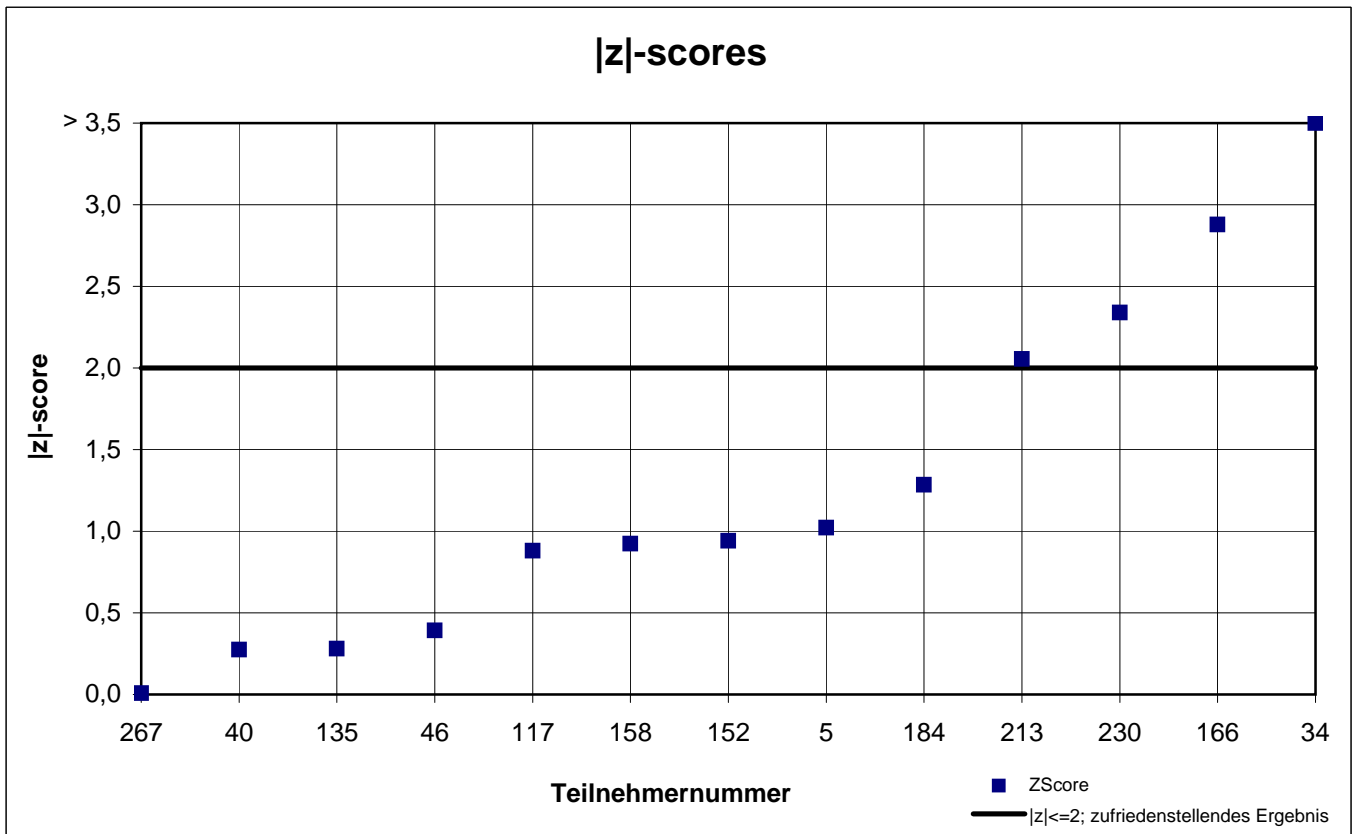
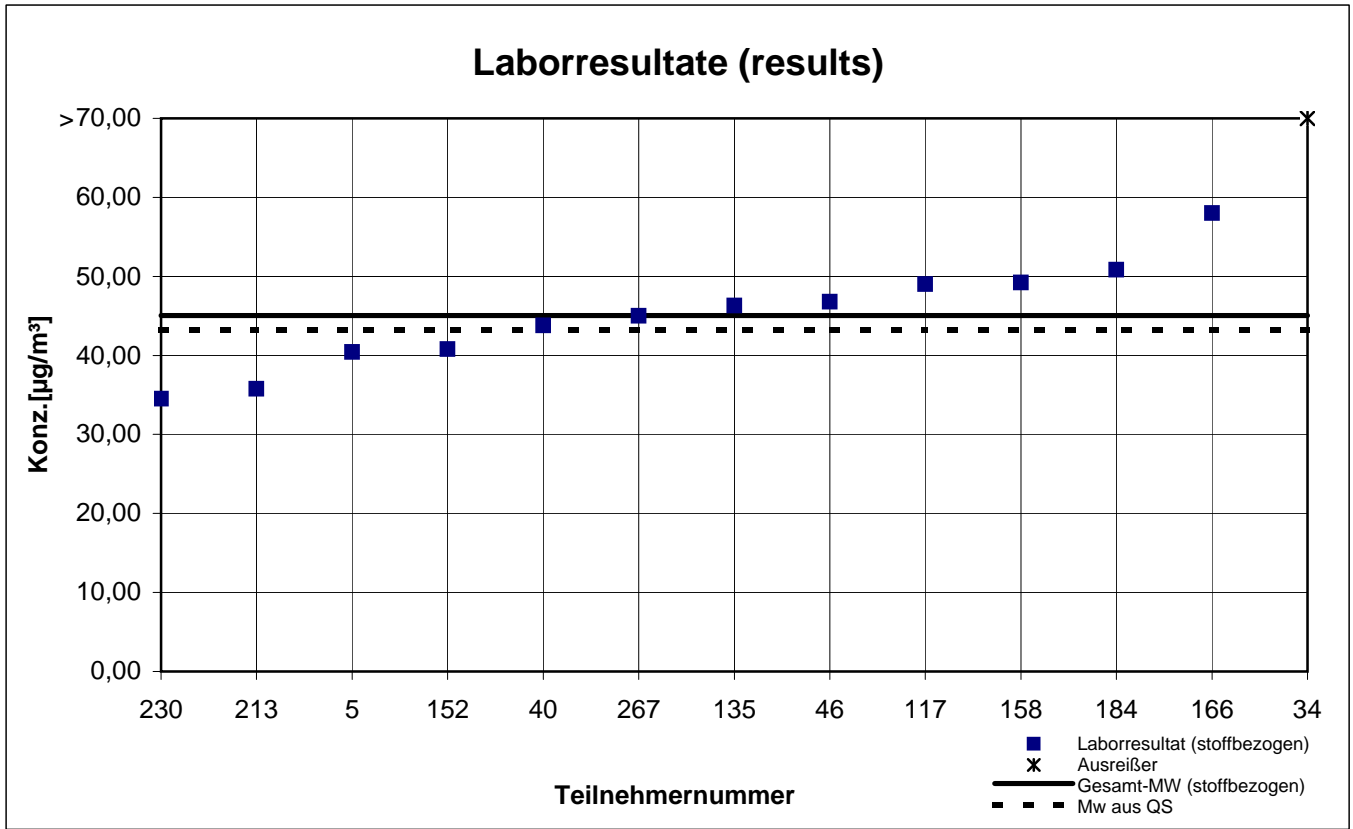
# Probe 2 (sample 2)

## p-Xylol



# Probe 2 (sample 2)

## R(+)-Limonen



# Probe 2 (sample 2)

## Toluol

