

results TYP-B - sample 1

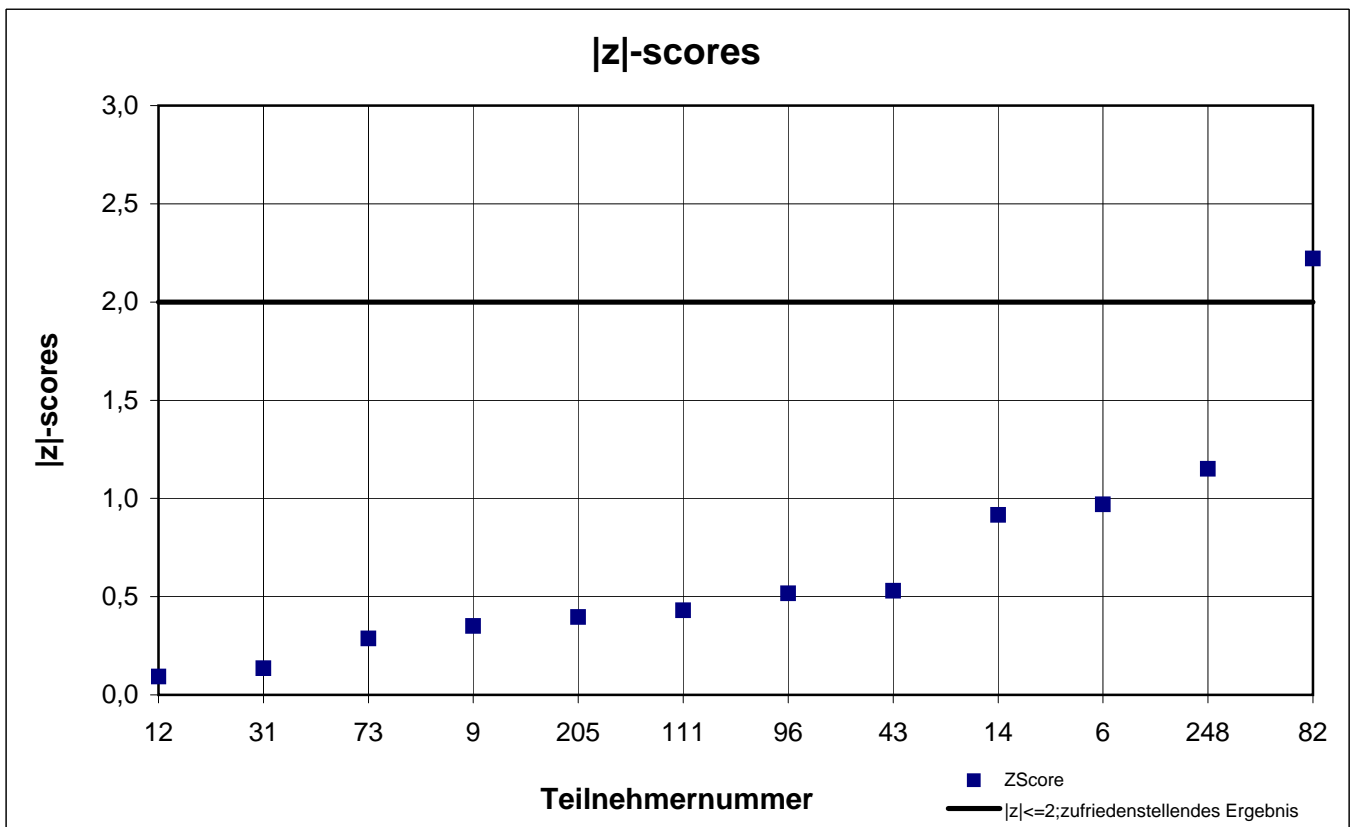
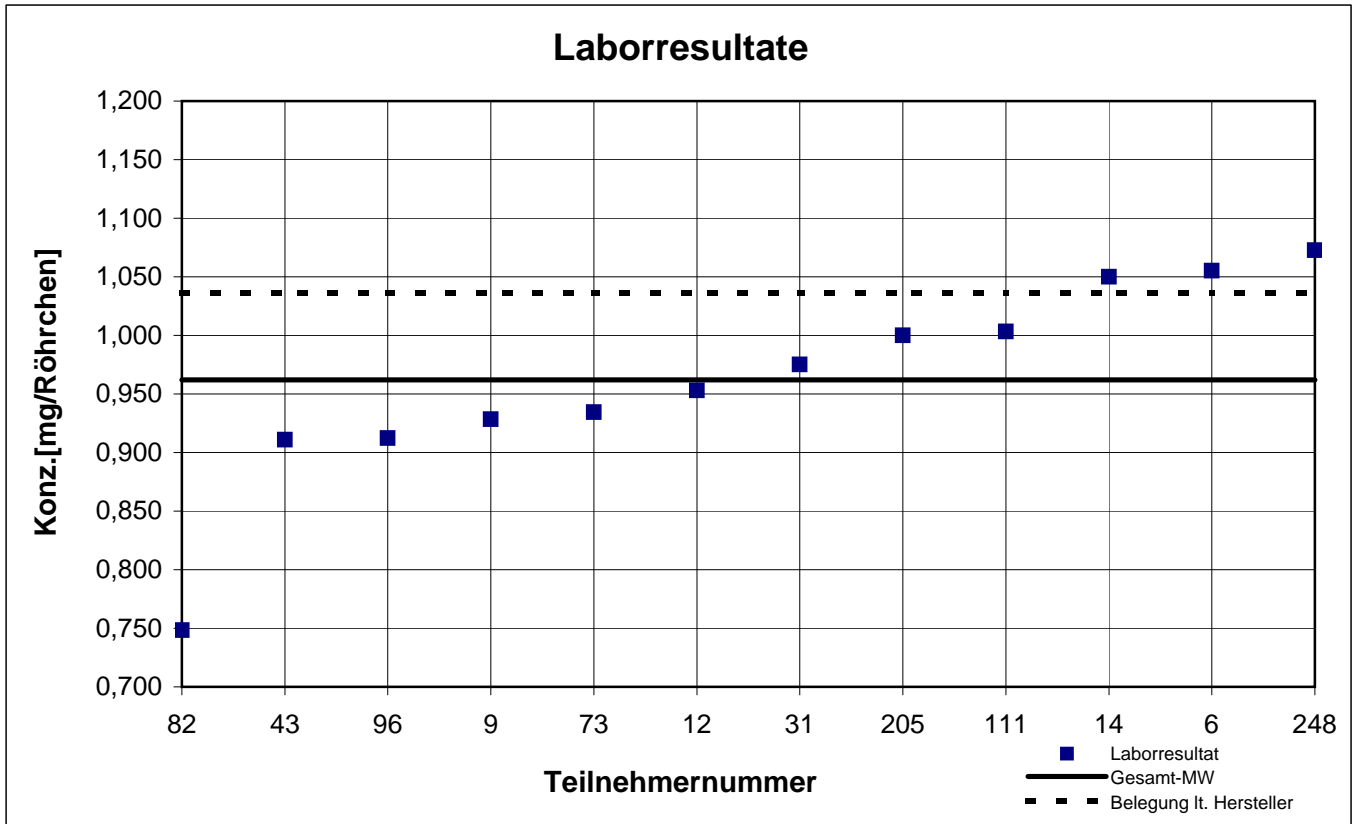
participant number	n-hexane		n-octane		trichlorethene	
	result [mg/tube]	z - score	result [mg/tube]	z - score	result [mg/tube]	z - score
6	1,055	1,0	2,464	1,0	1,064	1,6
9	0,928	0,3	2,037	0,9	0,877	0,5
12	0,953	0,1	2,330	0,4	0,898	0,2
14	1,050	0,9	2,211	0,1	0,914	0,1
31	0,975	0,1	2,132	0,4	0,887	0,4
43	0,911	0,5	2,059	0,8	0,960	0,4
73	0,934	0,3	2,284	0,2	0,850	0,8
82	0,748	2,2	2,297	0,3	0,896	0,3
96	0,912	0,5	2,012	1,0	0,804	1,3
111	1,003	0,4	2,273	0,2	0,970	0,5
205	1,000	0,4	2,400	0,8	0,930	0,1
248	1,073	1,2	2,289	0,3	0,991	0,8

 marked fields are outliers!

	n-hexane	n-octane	trichlor ethene
mean c_k [mg / tube]	0,962	2,232	0,920
standard deviation S_k [mg / tube]	0,0880	0,1447	0,0690
relative standard deviation [%]	9,12	6,48	7,50

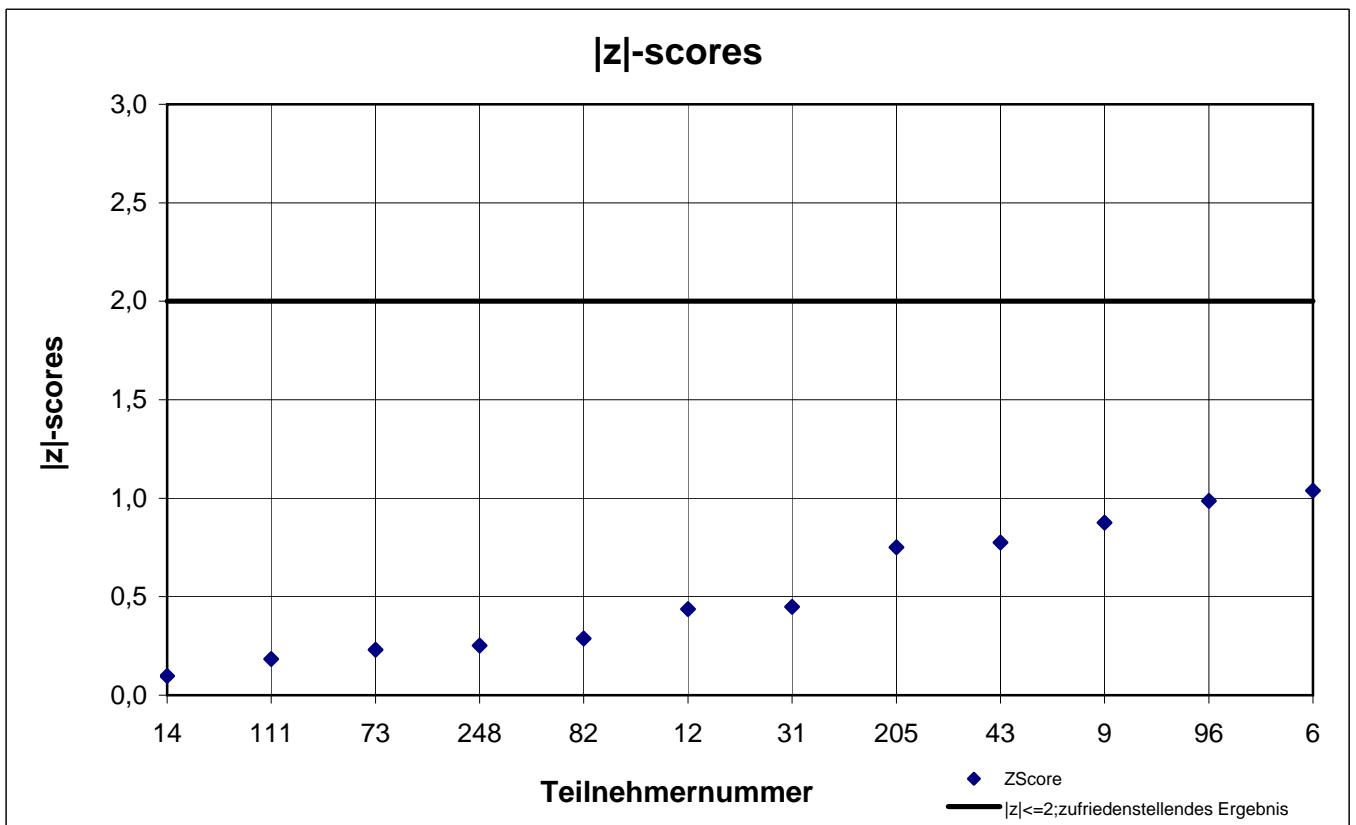
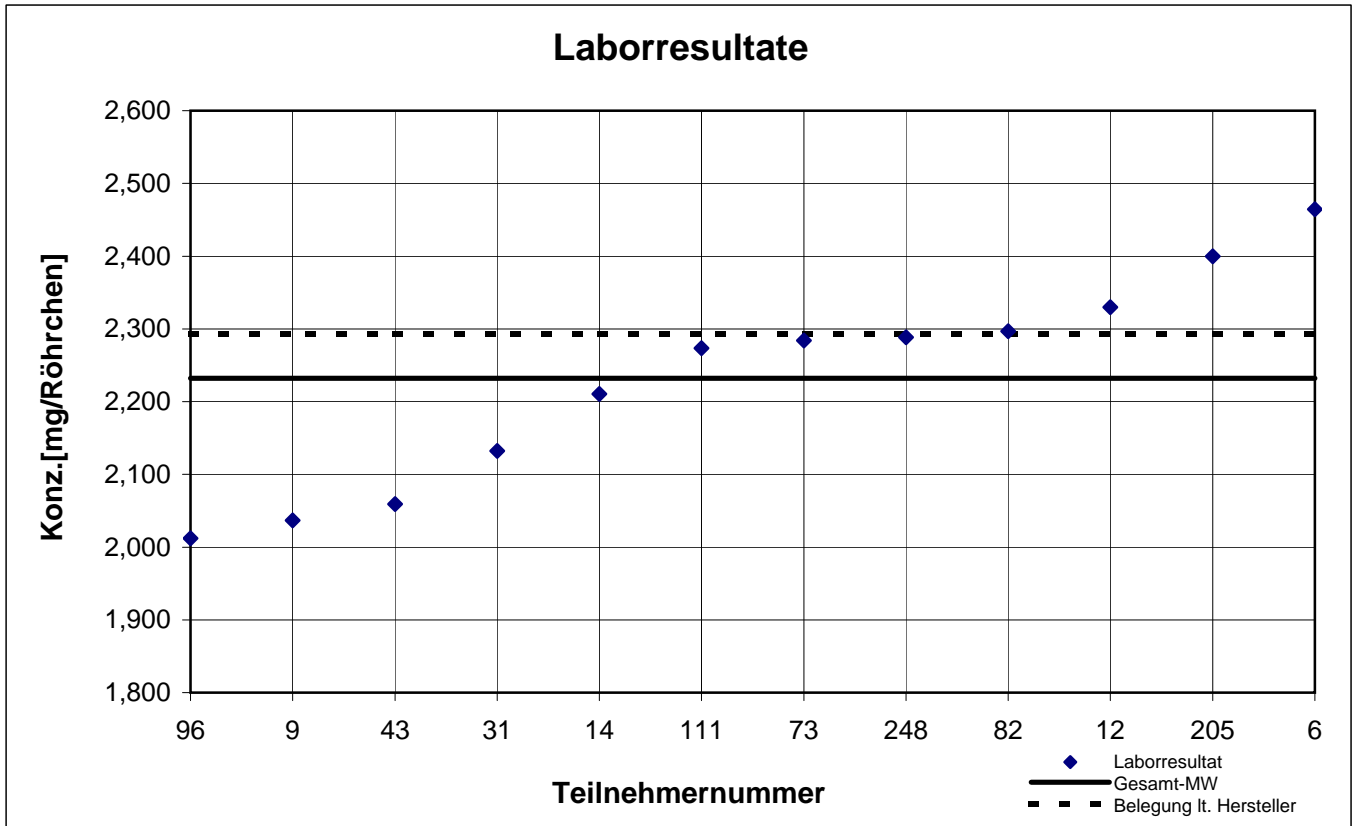
Typ-B -Probe 1

n-Hexan



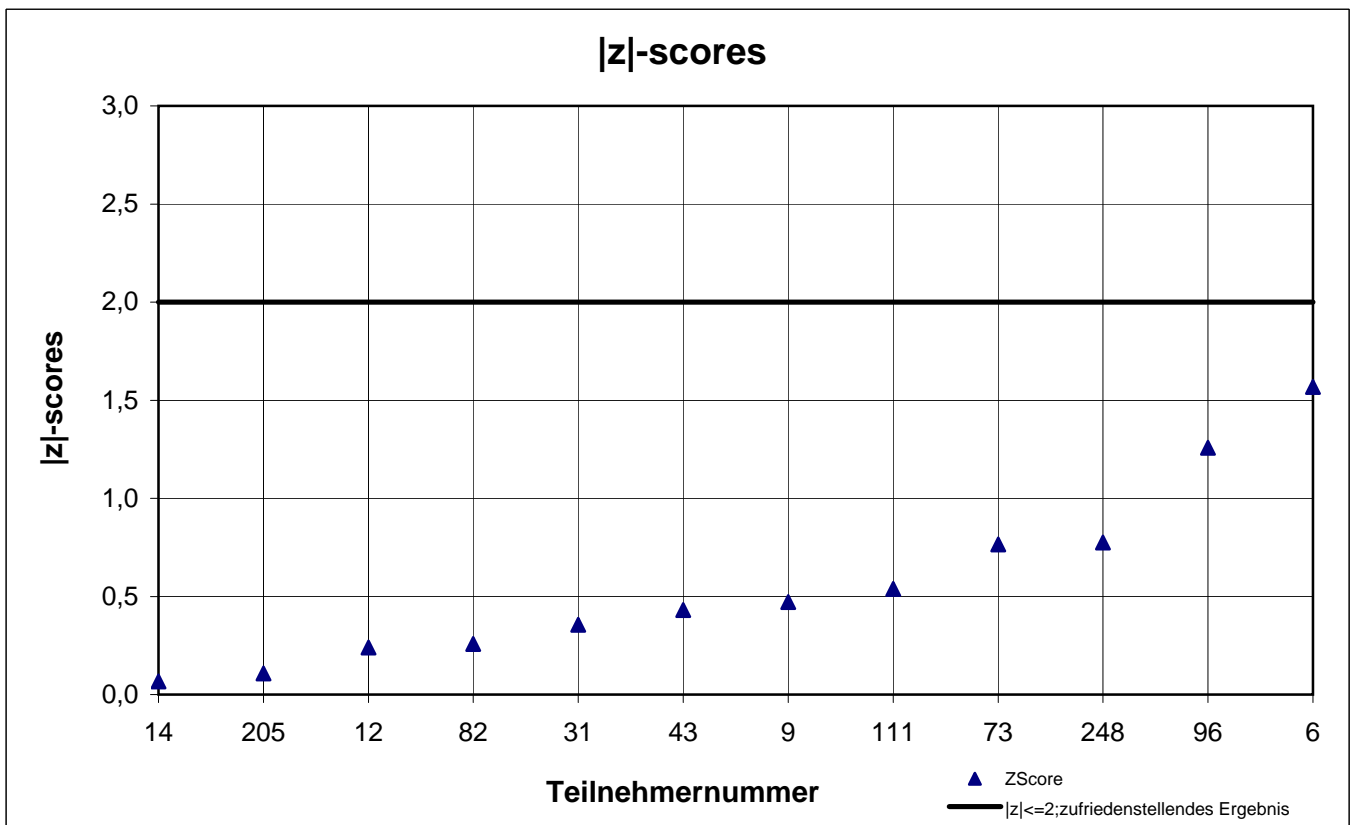
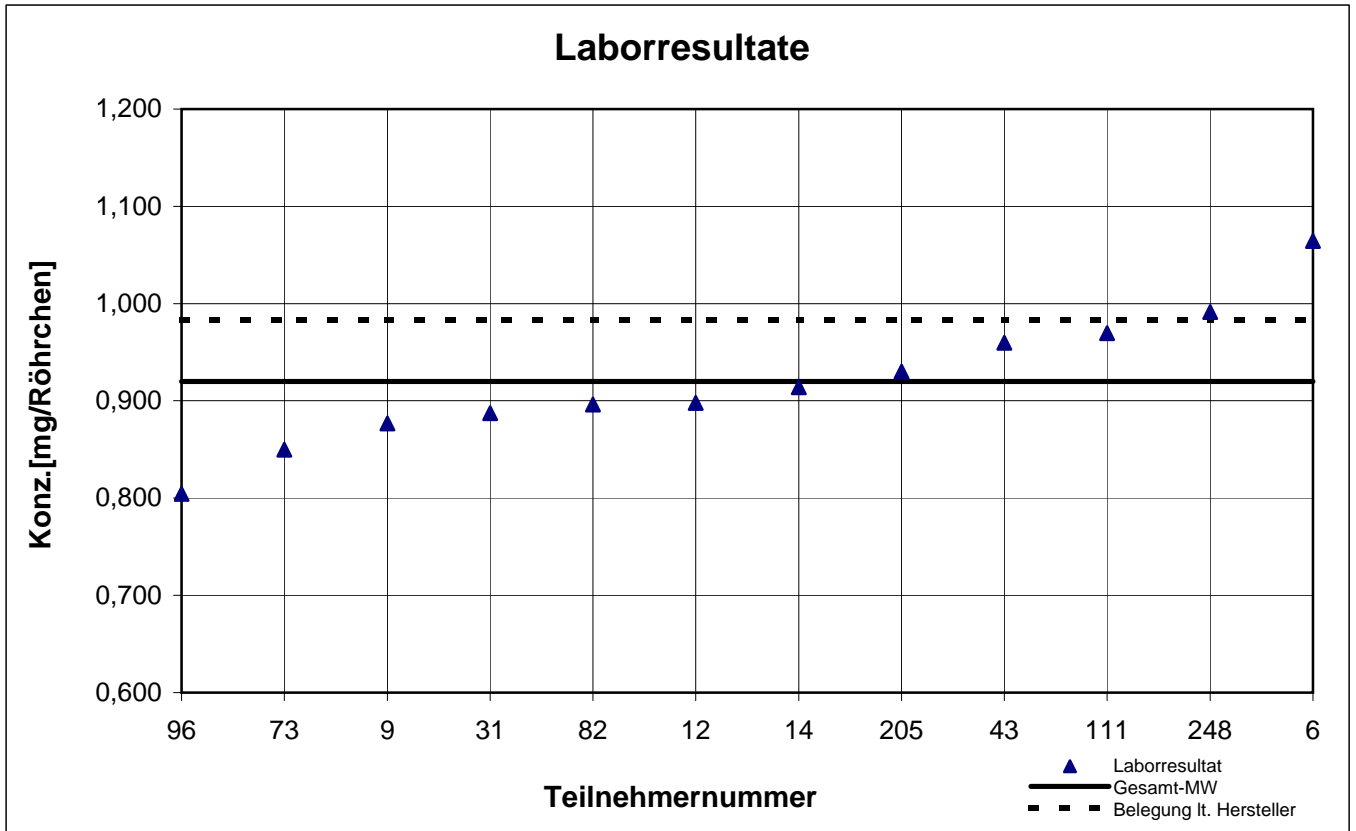
Typ-B -Probe 1

n-Oktan



Typ-B -Probe 1

Trichlorethen



results TYP-B - sample 2

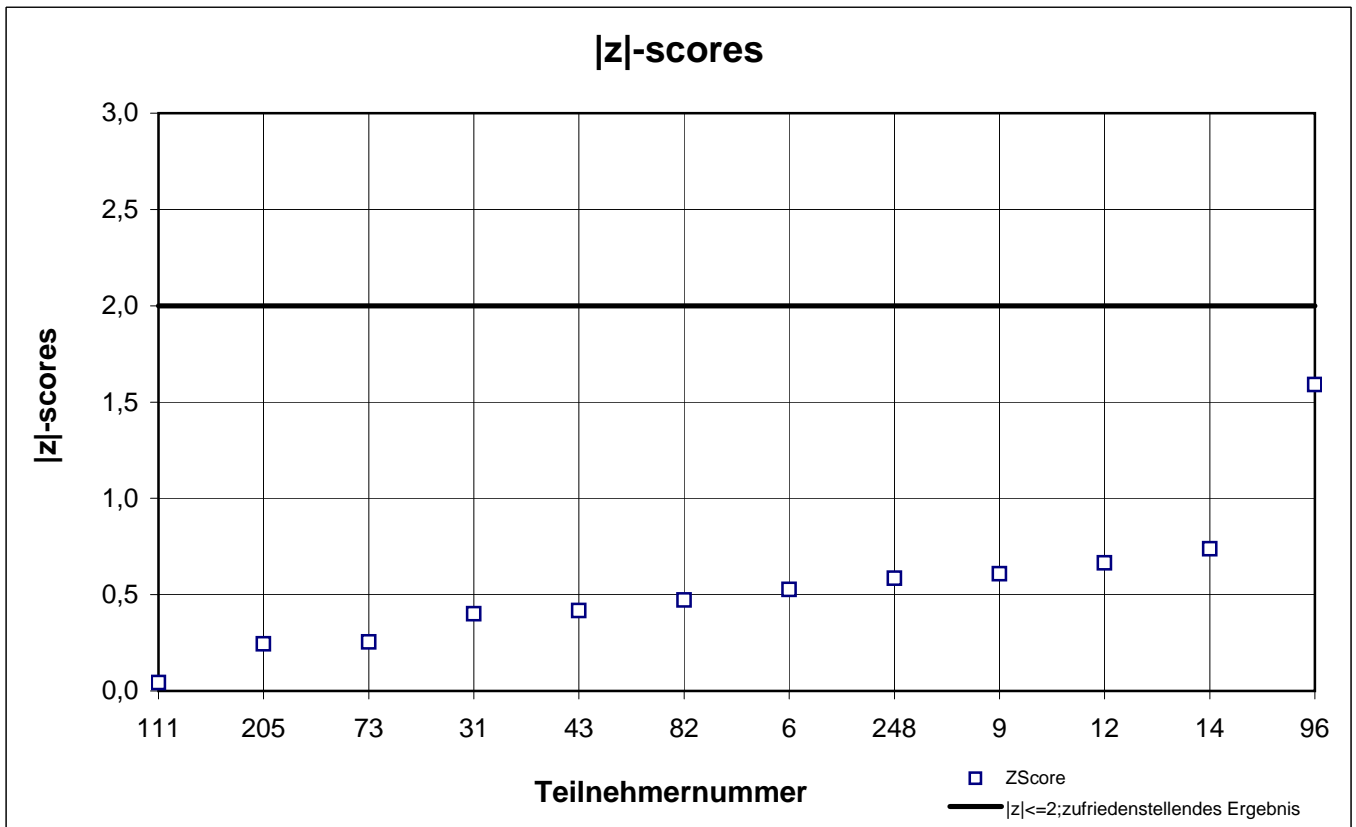
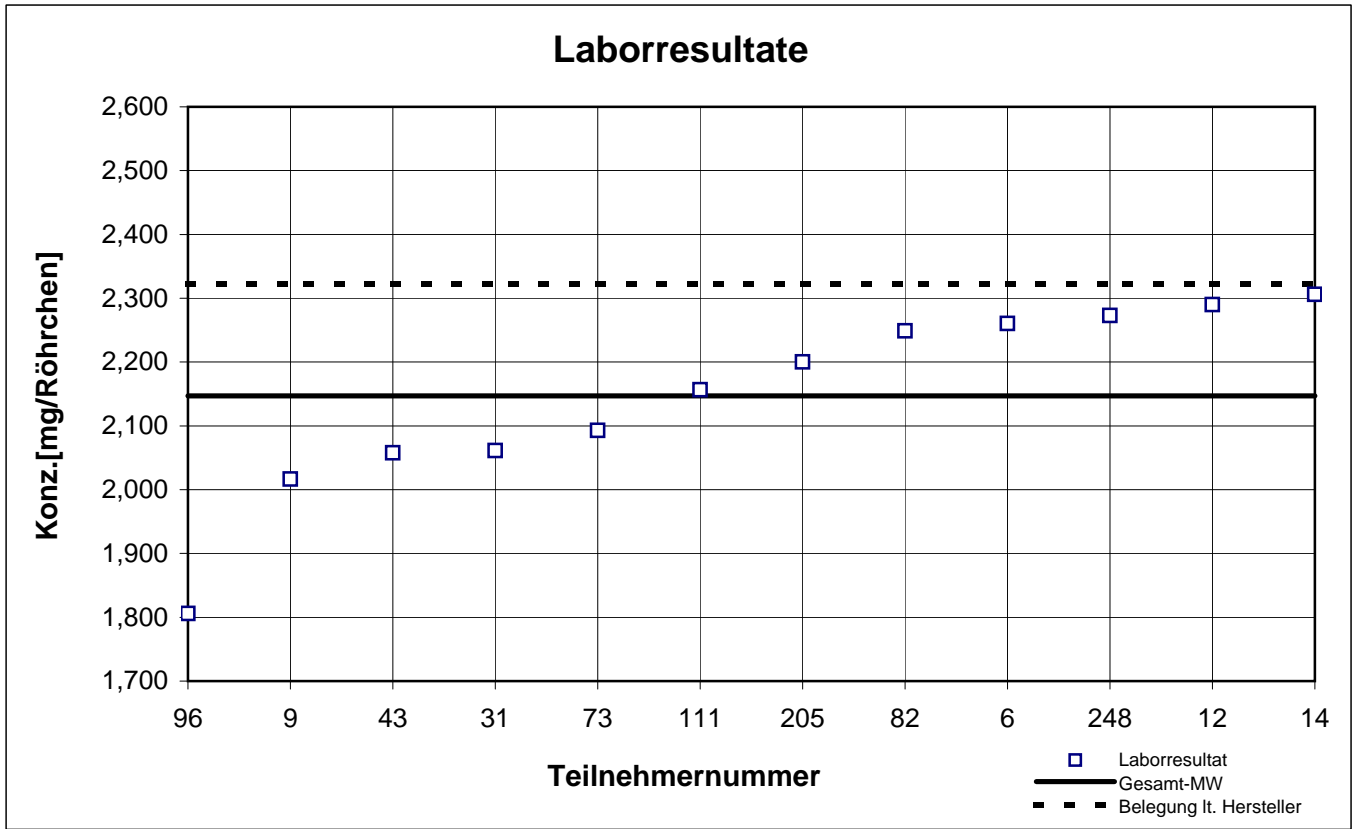
participant number	1,1,1-trichlor ethane		ethylbenzene		n-octane		o-xylene	
	result [mg/tube]	z - score	result [mg/tube]	z - score	result [mg/tube]	z - score	result [mg/tube]	z - score
6	2,260	0,5	0,707	0,4	1,527	0,6	0,806	0,3
9	2,017	0,6	0,724	0,6	1,343	0,7	0,727	0,7
12	2,290	0,7	0,600	1,2	1,290	1,1	0,669	1,4
14	2,306	0,7	0,670	0,2	1,476	0,2	0,775	0,1
31	2,061	0,4	0,684	0,1	1,404	0,3	0,840	0,8
43	2,058	0,4	0,673	0,1	1,393	0,4	0,774	0,1
73	2,093	0,3	0,675	0,1	1,501	0,4	0,695	1,1
82	2,249	0,5	0,683	0,0	1,511	0,5	0,844	0,8
96	1,806	1,6	0,624	0,8	1,312	0,9	0,758	0,3
111	2,157	0,0	0,672	0,1	1,470	0,2	0,804	0,3
205	2,200	0,2	0,750	1,0	1,600	1,1	0,840	0,8
248	2,273	0,6	0,702	0,3	1,495	0,4	0,824	0,6

 marked fields are outliers!

	1,1,1-trichlor ethane	ethyl benzene	o-octane	o-xylene
mean c_k [mg / tube]	2,147	0,680	1,443	0,780
standard deviation S_k [mg / tube]	0,1475	0,0402	0,0948	0,0583
relative standard deviation [%]	6,87	5,91	6,57	7,48

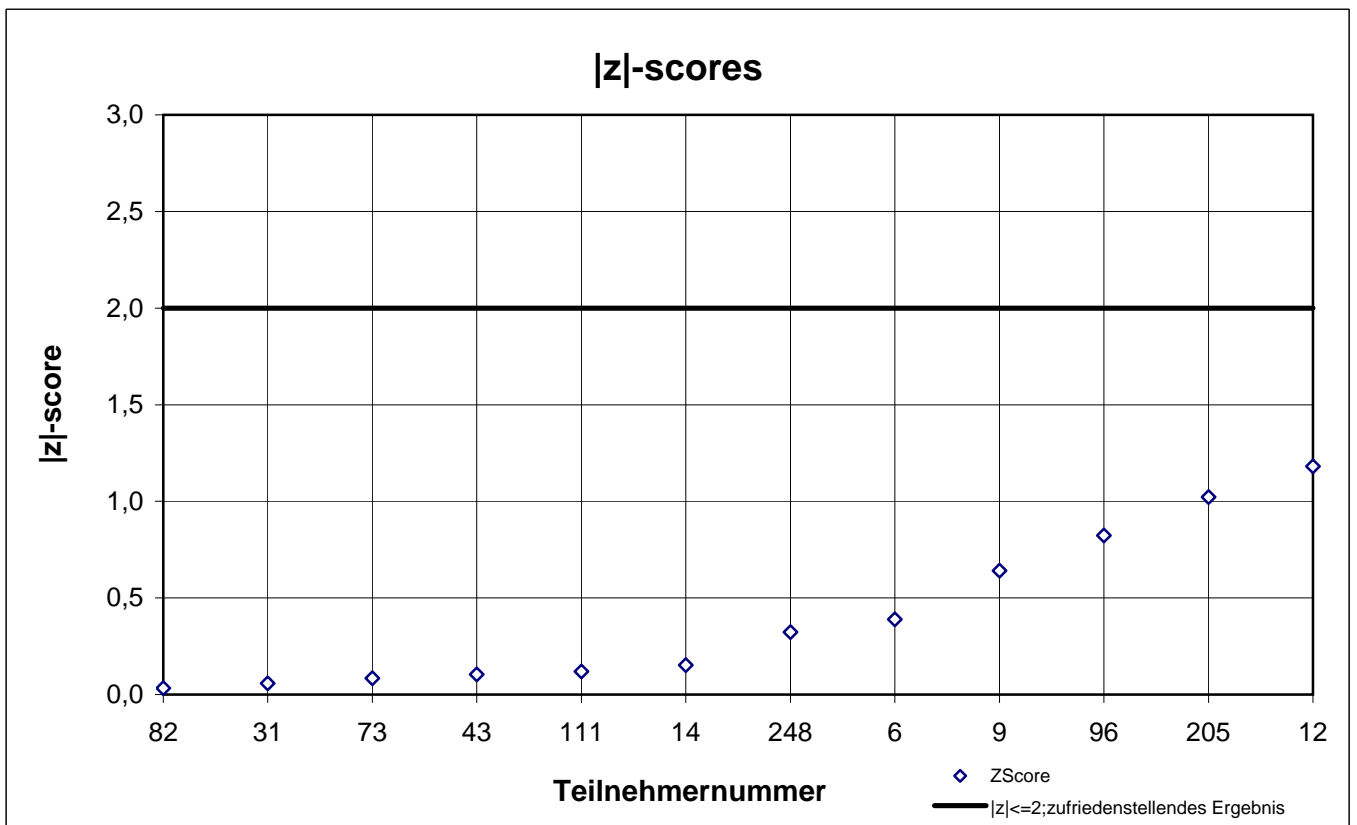
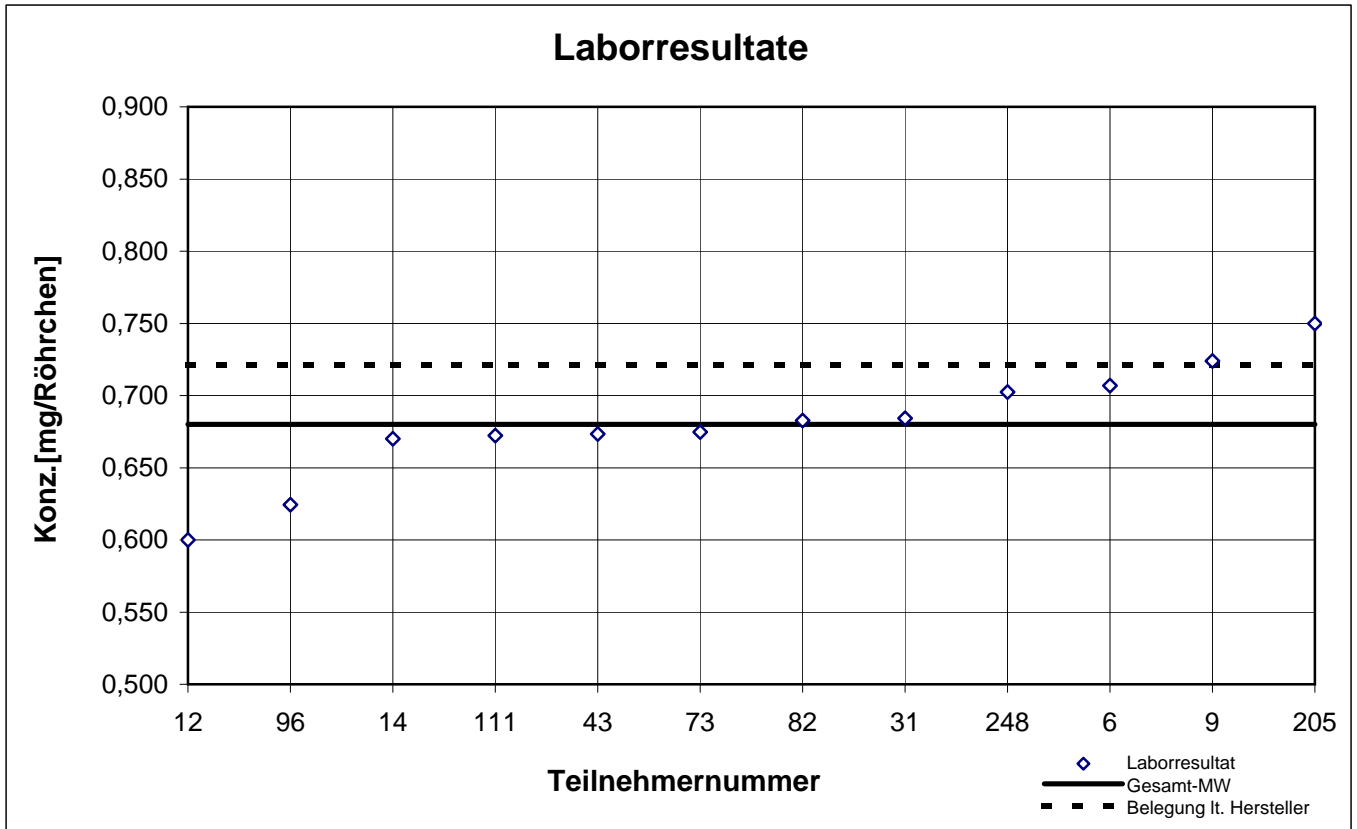
Typ-B -Probe 2

1,1,1-Trichlorethan



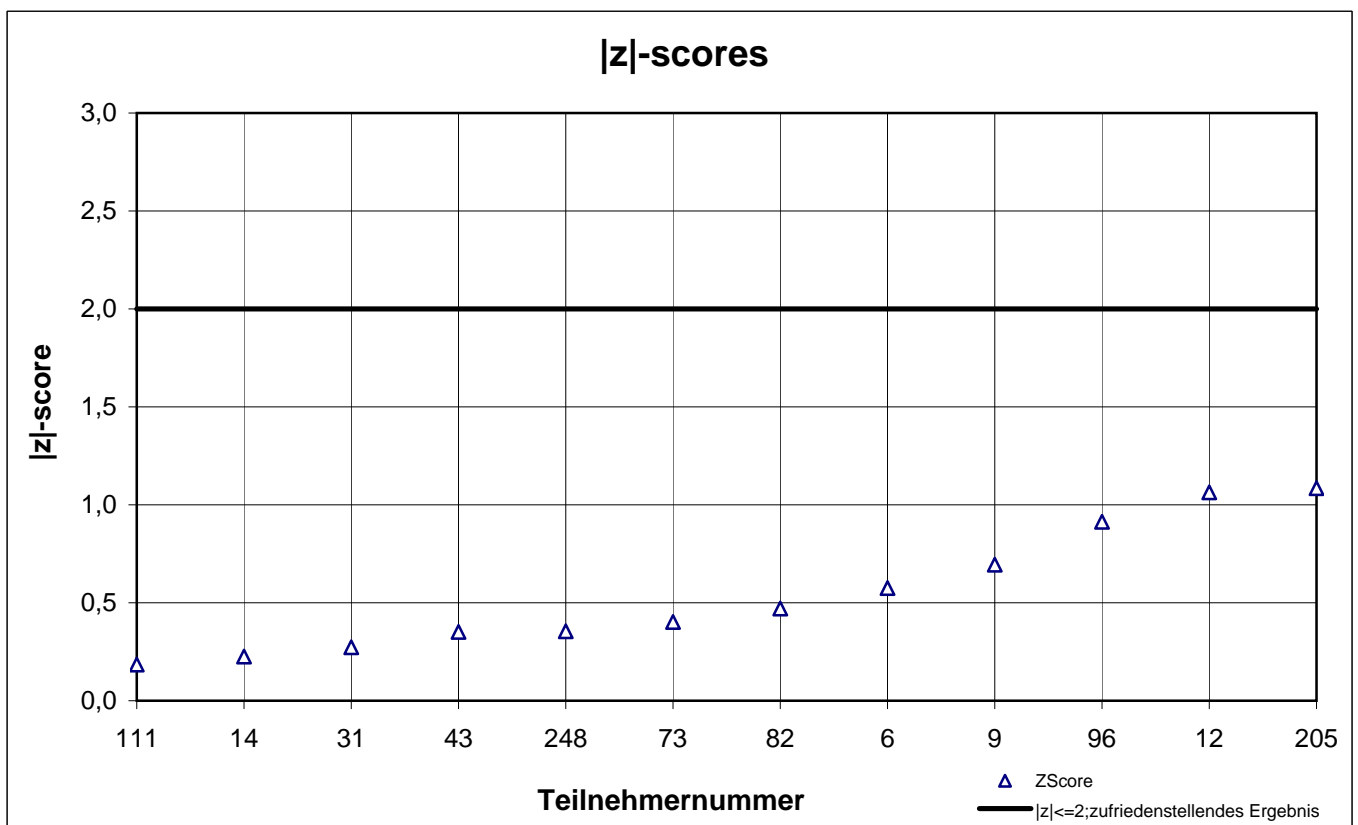
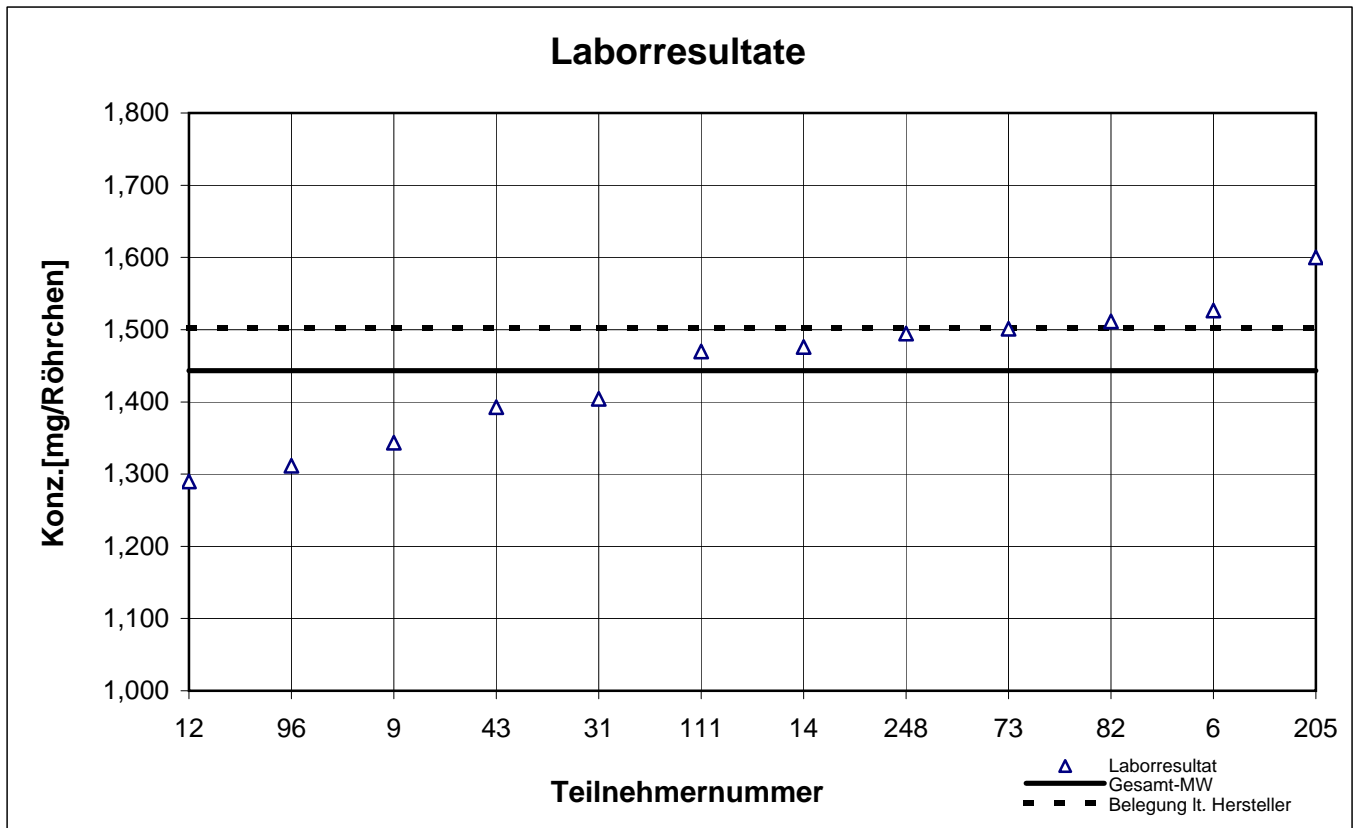
Typ-B -Probe 2

Ethylbenzol



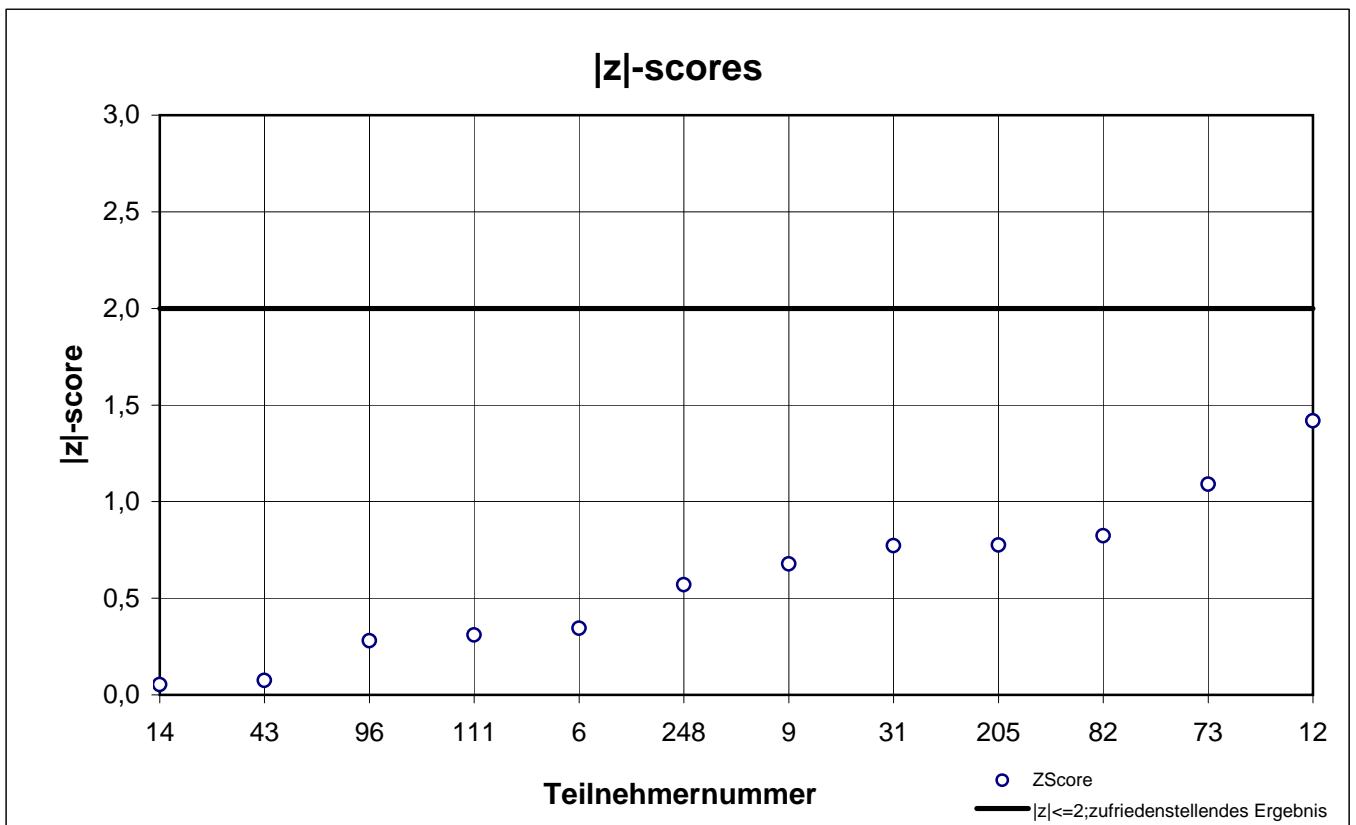
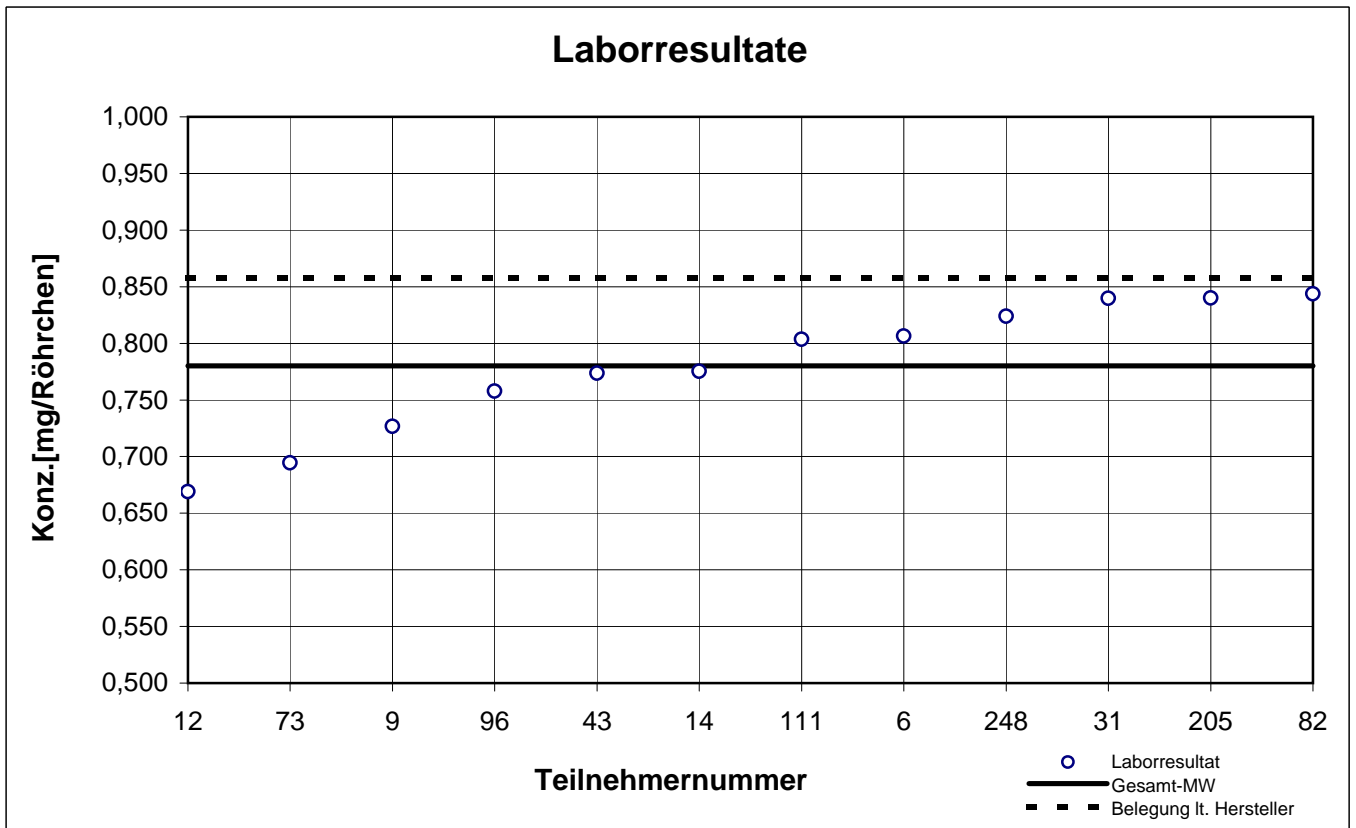
Typ-B -Probe 2

n-Oktan



Typ-B -Probe 2

o-Xylol



results TYP-B - sample 3

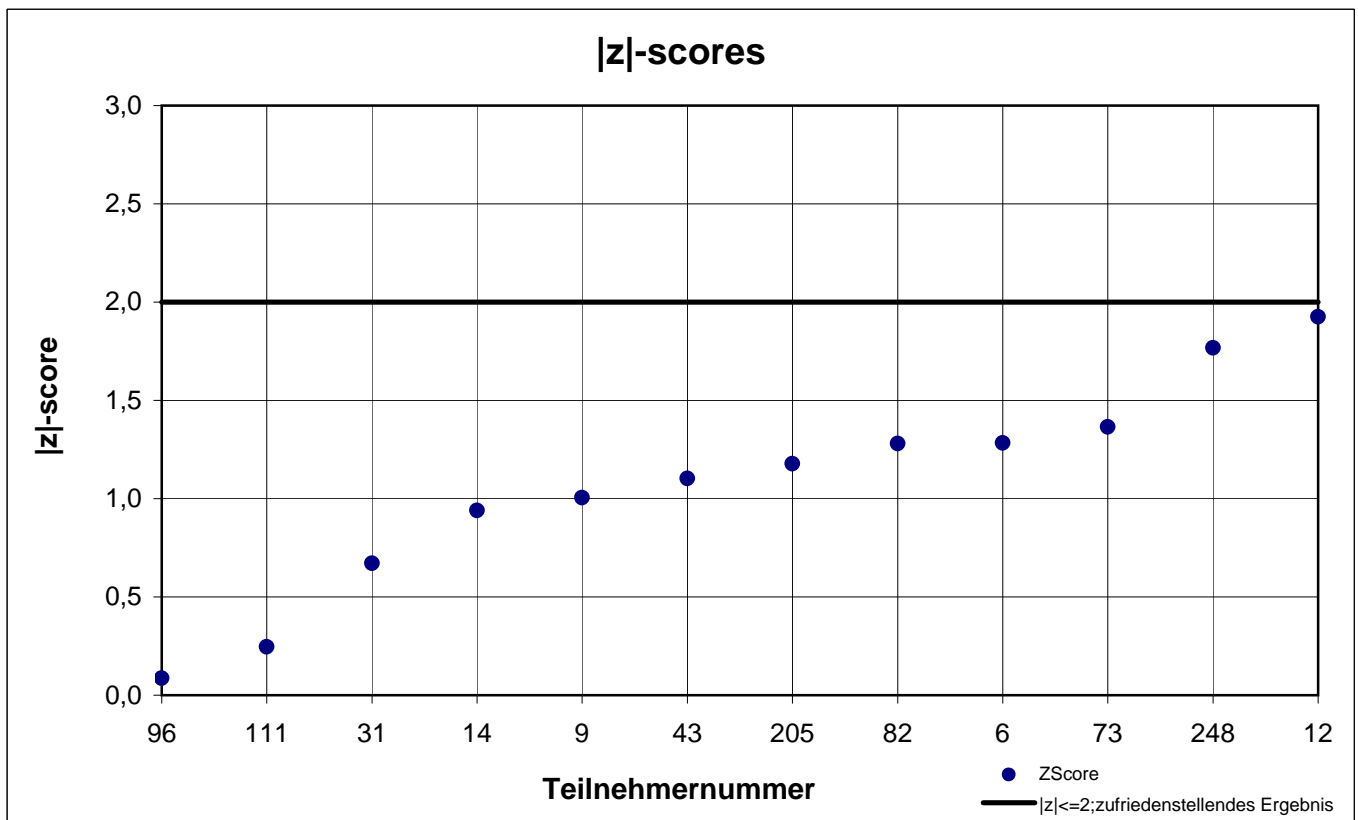
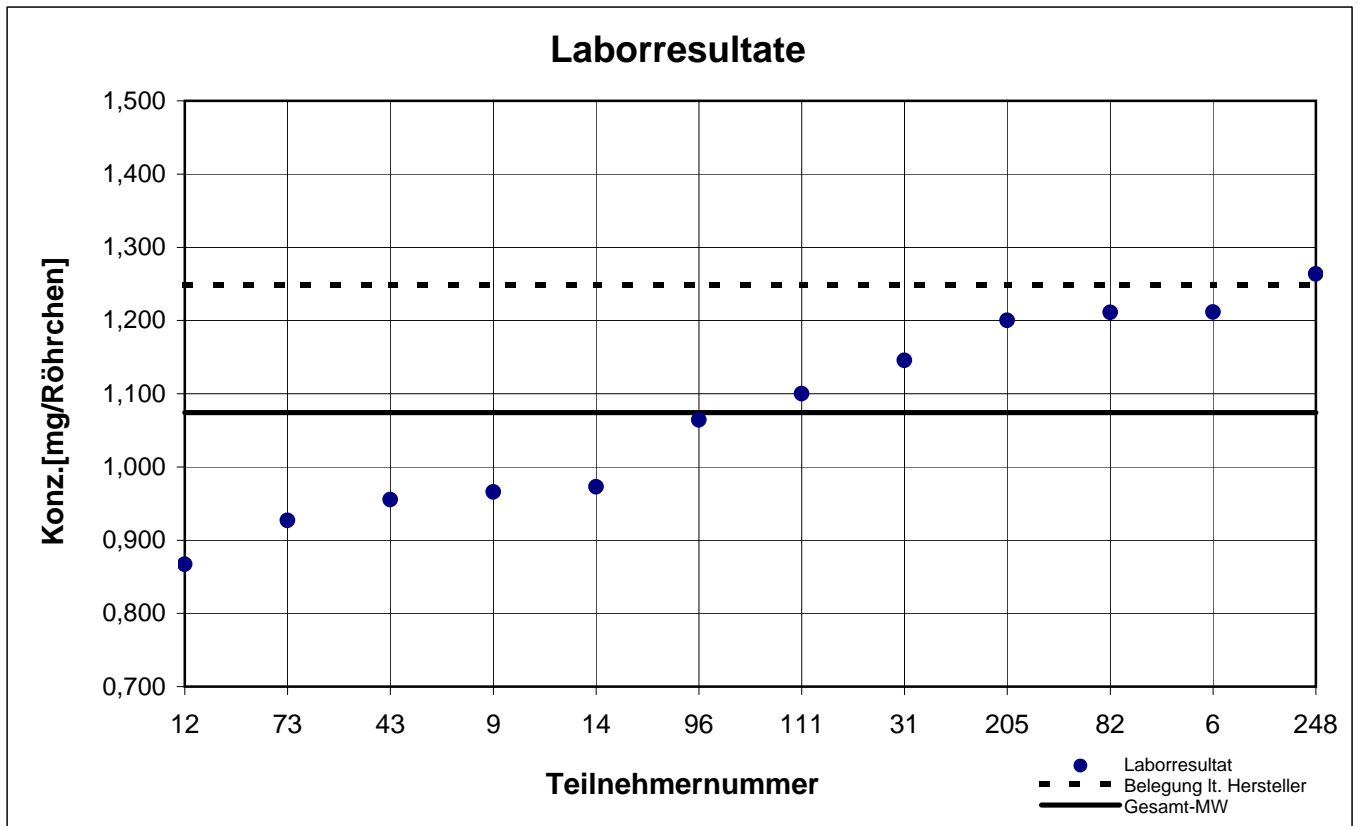
participant number	ethyl acetate		i-butylacetate		o-xylene	
	result [mg/tube]	z - score	result [mg/tube]	z - score	result [mg/tube]	z - score
6	1,212	1,3	2,148	1,2	0,349	0,9
9	0,966	1,0	1,950	0,2	0,325	0,2
12	0,867	1,9	1,540	2,0	0,272	1,5
14	0,973	0,9	1,741	0,9	0,290	0,9
31	1,146	0,7	2,025	0,5	0,333	0,4
43	0,955	1,1	1,880	0,2	0,309	0,3
73	0,927	1,4	1,630	1,5	0,290	0,9
82	1,211	1,3	2,138	1,1	0,343	0,7
96	1,064	0,1	1,870	0,3	0,302	0,5
111	1,100	0,2	1,893	0,1	0,333	0,4
205	1,200	1,2	2,100	0,9	0,350	1,0
248	1,263	1,8	2,136	1,1	0,335	0,5

 marked fields are outliers!

	ethyl acetate	i-butyl acetate	o-xylene
mean c_k [mg / tube]	1,074	1,921	0,319
standard deviation S_k [mg / tube]	0,1334	0,2035	0,0259
relative standard deviation [%]	12,43	10,59	8,10

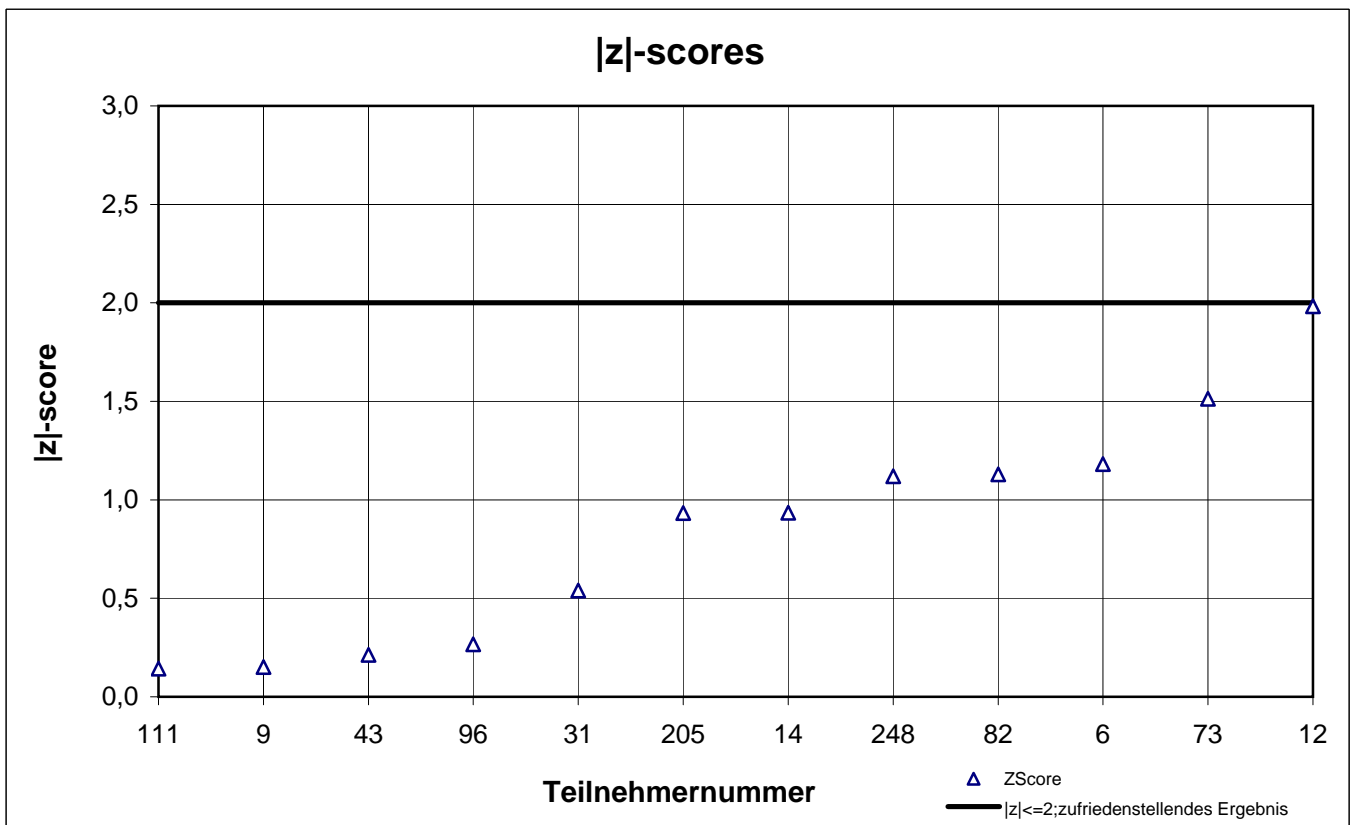
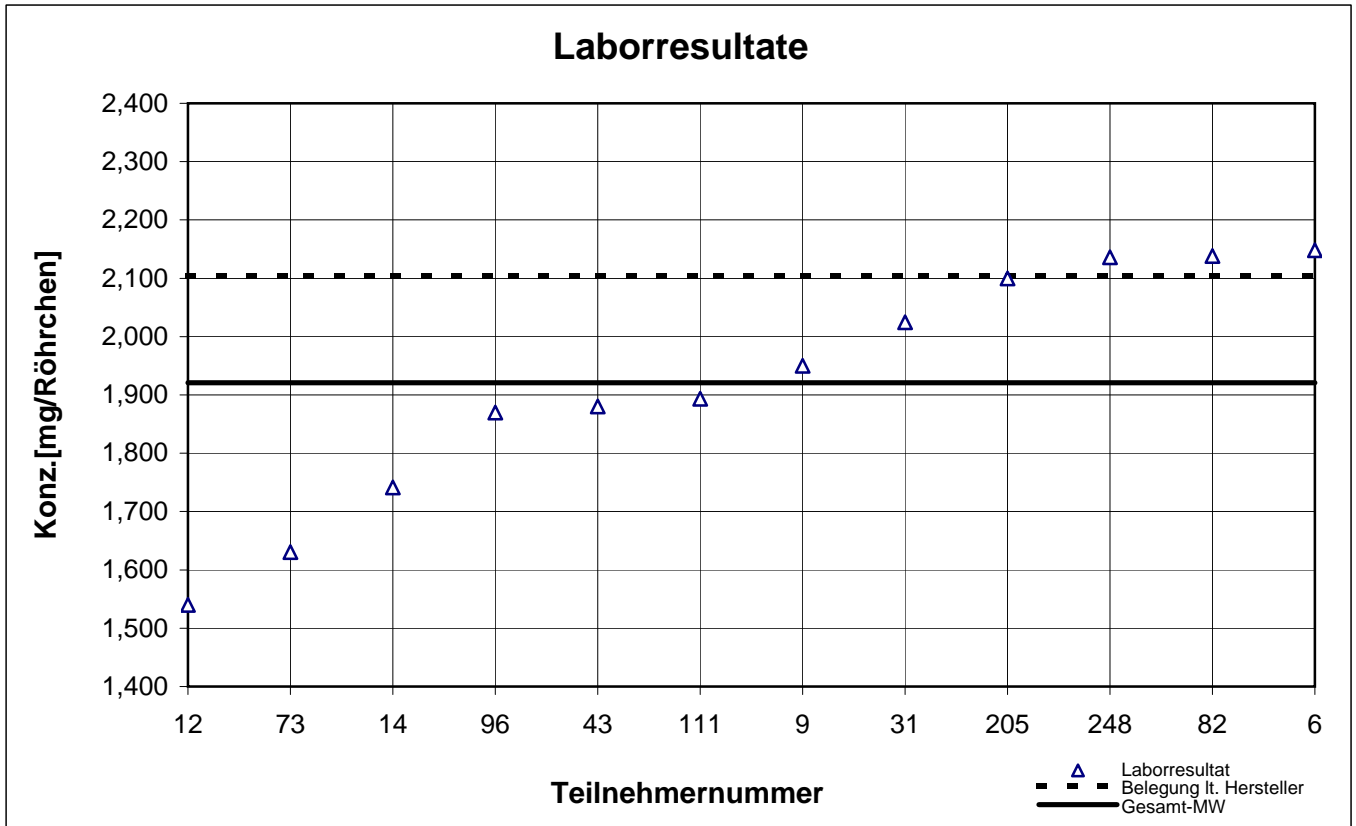
Typ-B -Probe 3

Ethylacetat



Typ-B -Probe 3

i-Butylacetat



Typ-B -Probe 3

o-Xylol

