

Probe 1 - Gesamtauswertung (Teil 1)

Teilnehmer- nummer	2-Butoxyethanol		2-Ethylhexanol		2-Phenoxyethanol		Dodecan		Hexanal	
	Labor- resultat ($\mu\text{g} / \text{m}^3$)	z - score	Labor- resultat ($\mu\text{g} / \text{m}^3$)	z - score	Labor- resultat ($\mu\text{g} / \text{m}^3$)	z - score	Labor- resultat ($\mu\text{g} / \text{m}^3$)	z - score	Labor- resultat ($\mu\text{g} / \text{m}^3$)	z - score
87	77,35		20,20	0,9	66,6	4,2	44,70	0,8	44,20	
88	55,00		17,00	0,8	153,00	3,4	47,00	0,3	12,00	
90	41,27		17,77	0,4	51,2	5,5	55,10	1,3	11,03	
93	52,30		21,83	1,8	113,05	0,1	50,48	0,4	8,98	
99	9,00		23,50	2,7	95,50	1,6	17,00	6,5	22,00	
135	48,55		19,50	0,6	132,8	1,6	50,45	0,4	22,00	
139*	k.A.		k.A.	k.A.	k.A.	k.A.	53,50	1,0	8,00	
155	67,50		28,00	5,2	162,5	4,2	82,50	7,0	29,50	
169	30,90		12,50	3,2	101,5	1,1	46,70	0,4	12,75	
175	32,50		19,00	0,3	102,5	1,0	72,00	4,8	13,00	
189	55,96		22,41	2,1	116,3	0,2	53,48	1,0	22,15	
192	14,25		10,39		58,0		47,38	0,2	6,40	
208	32,60		15,79	1,4	89,1	2,2	42,84	1,2	29,36	
212	35,40		14,45	2,2	104,5	0,8	49,25	0,1	16,20	
215	39,00		27,50	4,9	115,0	0,1	51,00	0,5	26,00	
237	42,25		17,60	0,5	132,5	1,6	39,75	1,8	19,60	

Die mit gekennzeichneten Felder sind Ausreißer!

* eigene Probenahme vor Ort

 Toluoläquivalent

	2-Butoxy- ethanol	2-Ethyl- hexanol	2-Phenoxy- ethanol	Dodecan	Hexanal
Gesamtmittelwert c_k [$\mu\text{g} / \text{m}^3$]		18,46	114,2	48,59	
Standardabweichung S_k [$\mu\text{g} / \text{m}^3$]		3,286	18,871	4,449	
rel. Standardabweichung [%]		17,80	16,53	9,16	
Sollwert [$\mu\text{g} / \text{m}^3$]	43,10	19,30	117,2	49,10	25,80

Probe 1 - Gesamtauswertung (Teil 2)

Teilnehmer- nummer	n-Butylacetat		Octamethylcyclo- tetrasiloxan		p-Xylol		R(+)-Limonen		Toluol	
	Labor- resultat ($\mu\text{g} / \text{m}^3$)	z - score	Labor- resultat ($\mu\text{g} / \text{m}^3$)	z - score	Labor- resultat ($\mu\text{g} / \text{m}^3$)	z - score	Labor- resultat ($\mu\text{g} / \text{m}^3$)	z - score	Labor- resultat ($\mu\text{g} / \text{m}^3$)	z - score
87	17,90	0,4	40,65	0,8	15,65	0,1	41,00	1,1	25,40	0,6
88	17,00	0,1	49,00	1,1	15,00	0,5	56,00	2,1	23,00	0,4
90	14,82	1,4	37,71	1,5	15,16	0,4	50,03	0,8	25,07	0,5
93	18,46	0,7	46,78	0,6	16,13	0,2	45,80	0,1	25,11	0,5
99	9,00	4,8	k.A.	k.A.	3,50	7,8	39,00	1,6	12,00	5,0
135	16,50	0,4	49,90	1,3	14,95	0,6	46,40	0,0	21,15	1,2
139*	20,50	1,9	116,00		15,00	0,5	48,50	0,5	23,50	0,2
155	29,00	6,9	75,00	7,0	19,50	2,3	52,50	1,4	30,00	2,5
169	15,70	0,9	44,00	0,0	14,25	1,0	31,40	3,2	24,90	0,4
175	13,00	2,4	95,00	11,5	19,50	2,3	59,50	2,9	24,50	0,2
189	20,27	1,8	121,70		17,55	1,1	49,23	0,7	26,54	1,1
192	17,31	0,1	79,83		15,23	0,4	42,20	0,9	22,68	0,5
208	16,55	0,4	75,07	7,0	14,04	1,1	42,67	0,8	36,78	5,3
212	16,75	0,3	37,60	1,5	13,90	1,2	44,05	0,5	20,00	1,7
215	17,00	0,1	49,50	1,2	16,50	0,4	44,00	0,5	23,00	0,4
237	18,85	1,0	42,25	0,4	14,95	0,6	47,00	0,2	20,65	1,4

Die mit gekennzeichneten Felder sind Ausreißer!

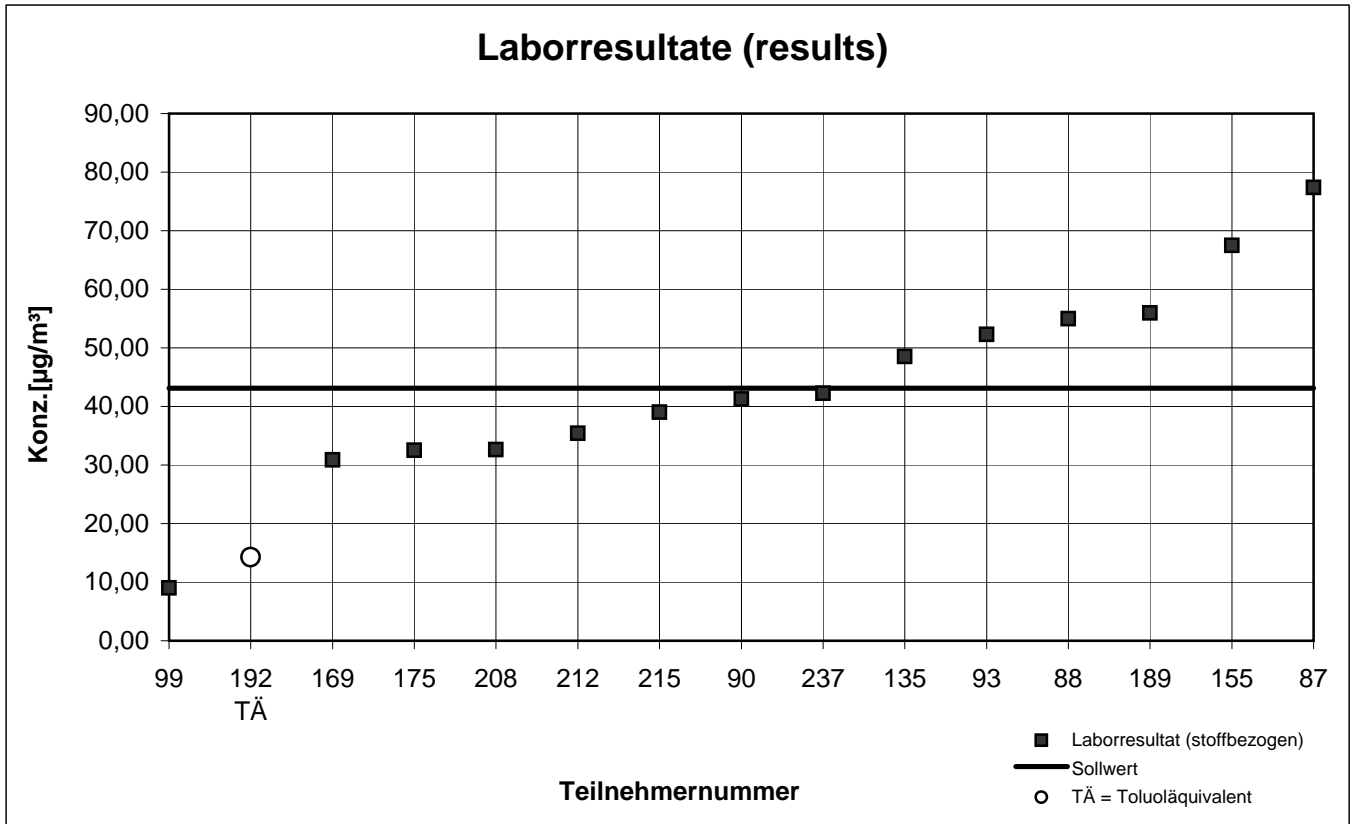
* eigene Probenahme vor Ort

 Toluoläquivalent

	n-Butyl- acetat	OMCTS	p-Xylol	R(+)- Limonen	Toluol
Gesamtmittelwert c_k [$\mu\text{g} / \text{m}^3$]	17,19	44,15	15,82	46,20	23,96
Standardabweichung S_k [$\mu\text{g} / \text{m}^3$]	1,998	4,903	1,765	6,725	2,589
rel. Standardabweichung [%]	11,62	11,10	11,15	14,56	10,80
Sollwert [$\mu\text{g} / \text{m}^3$]	16,60	35,80	13,70	47,50	18,20

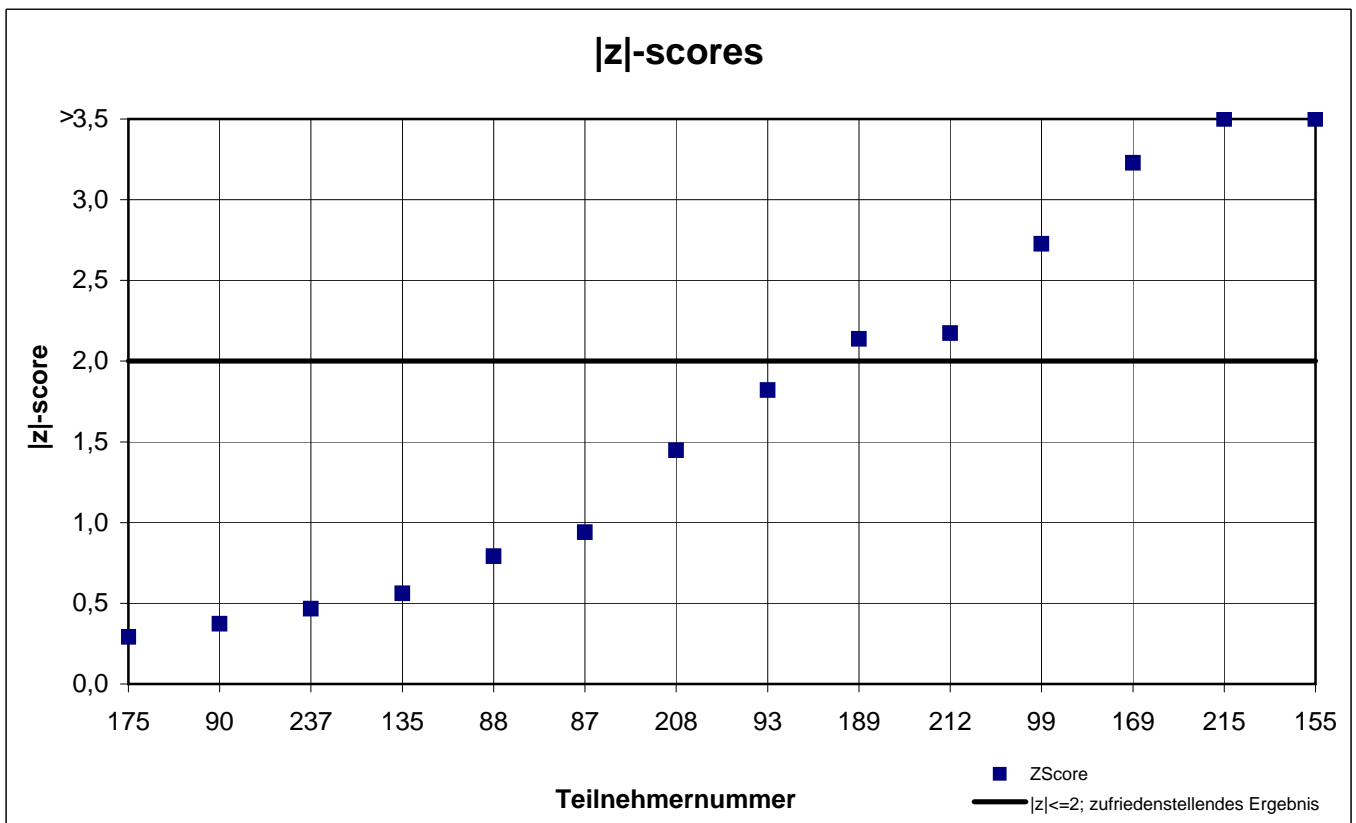
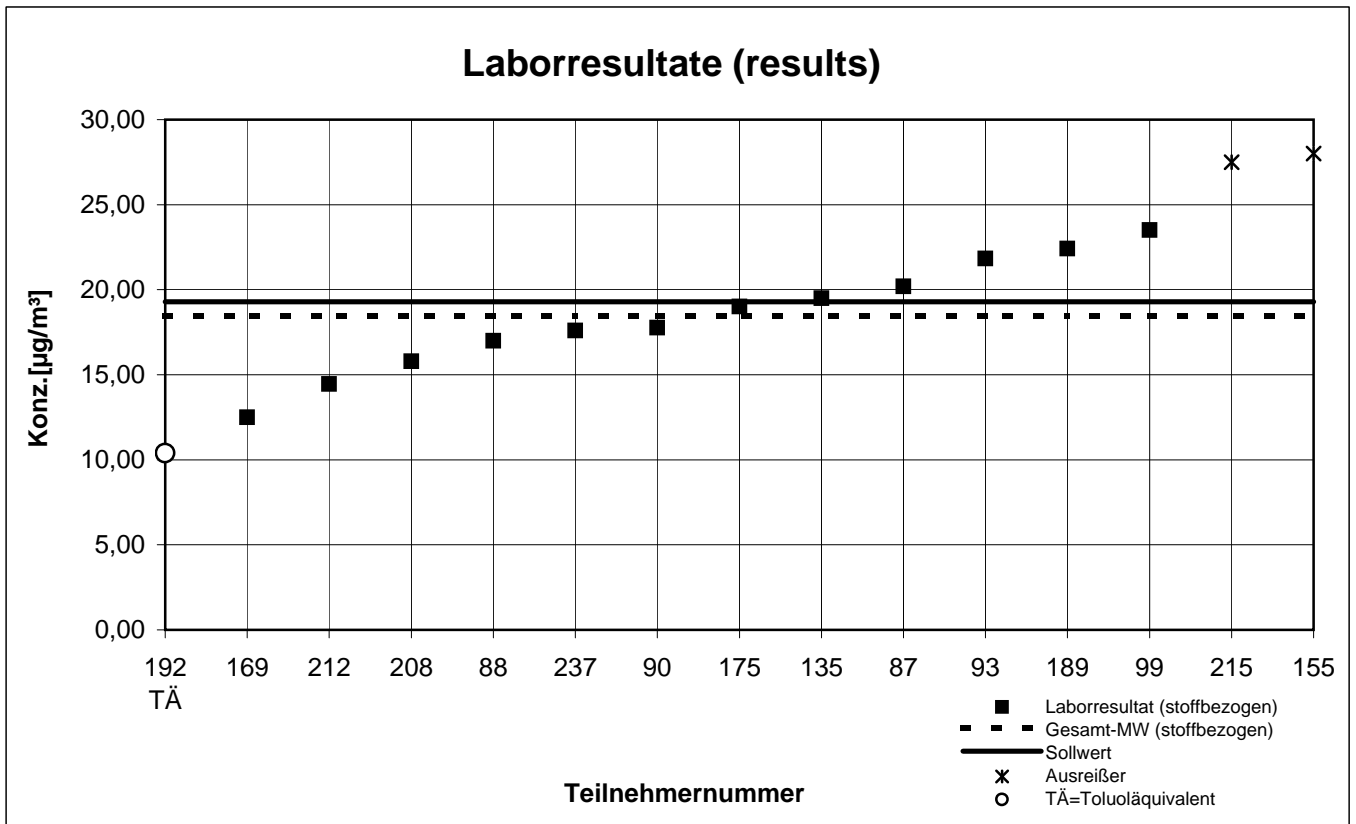
Probe 1 (sample 1)

2-Butoxyethanol



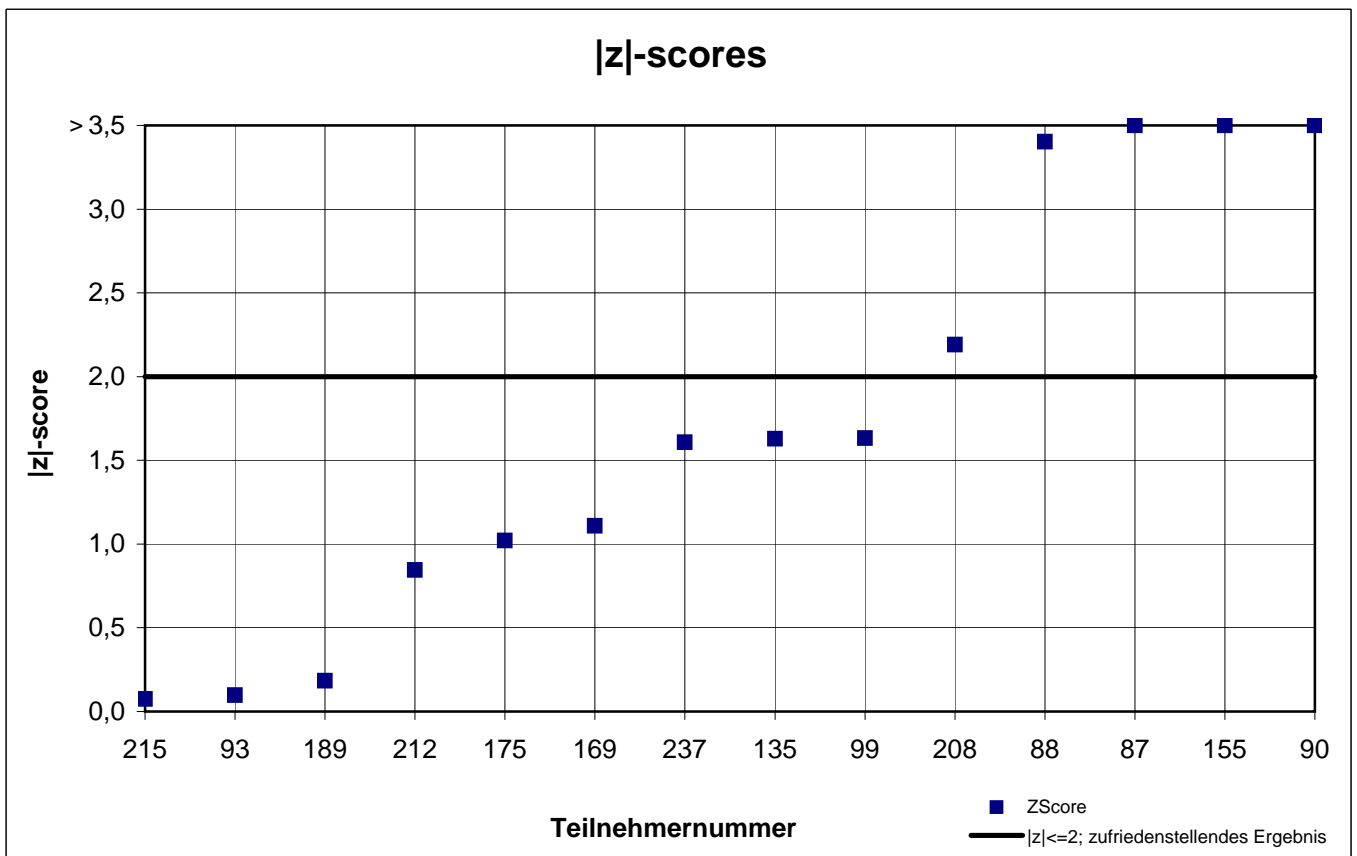
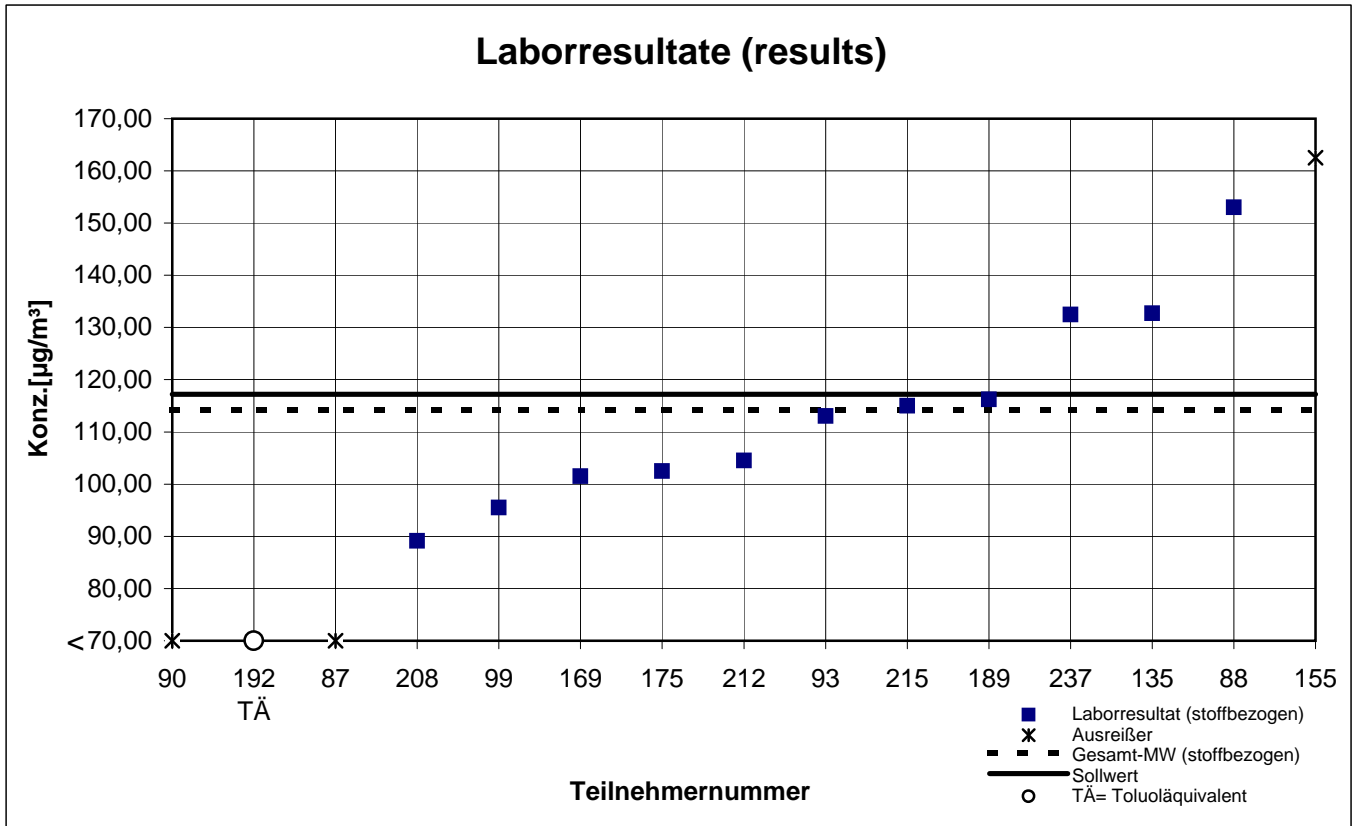
Probe 1 (sample 1)

Ethylhexanol



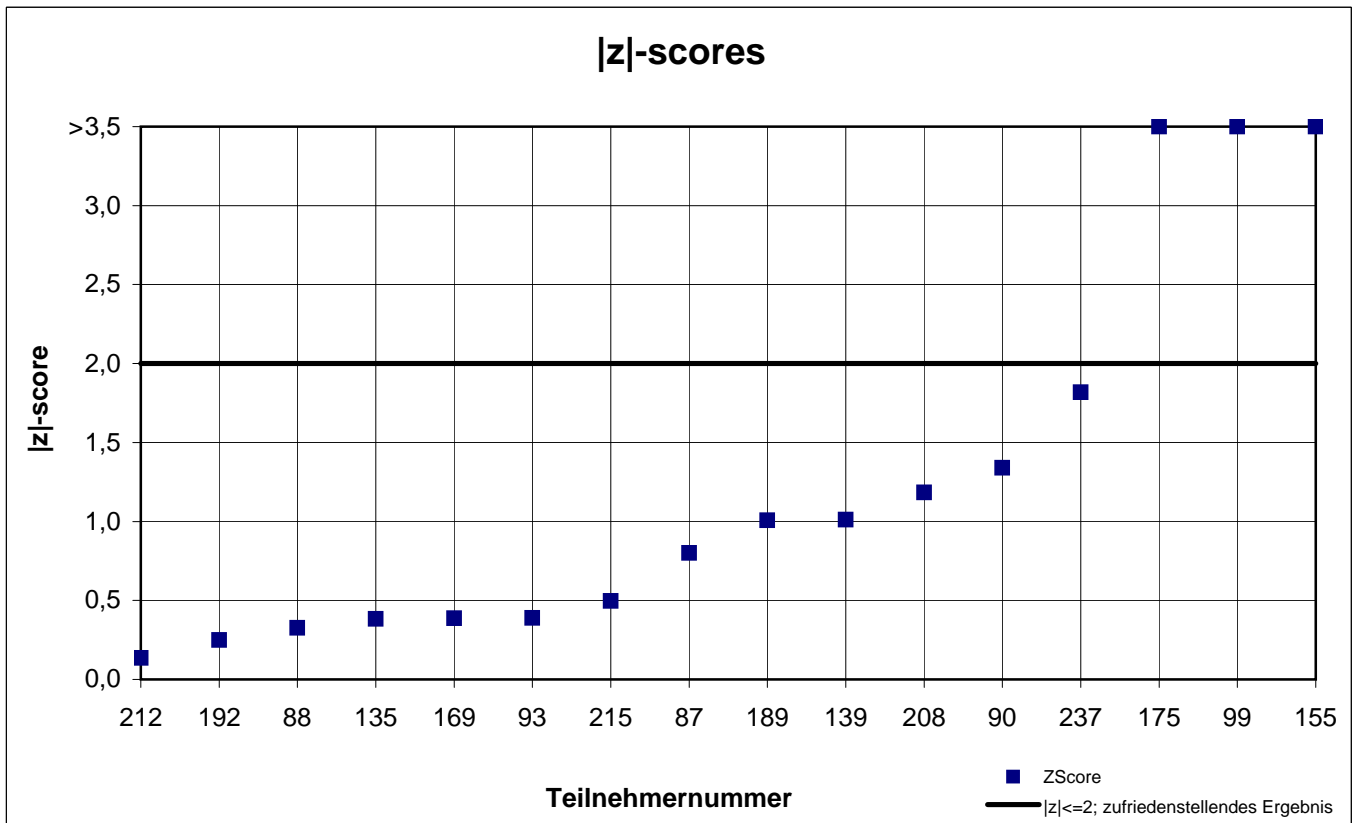
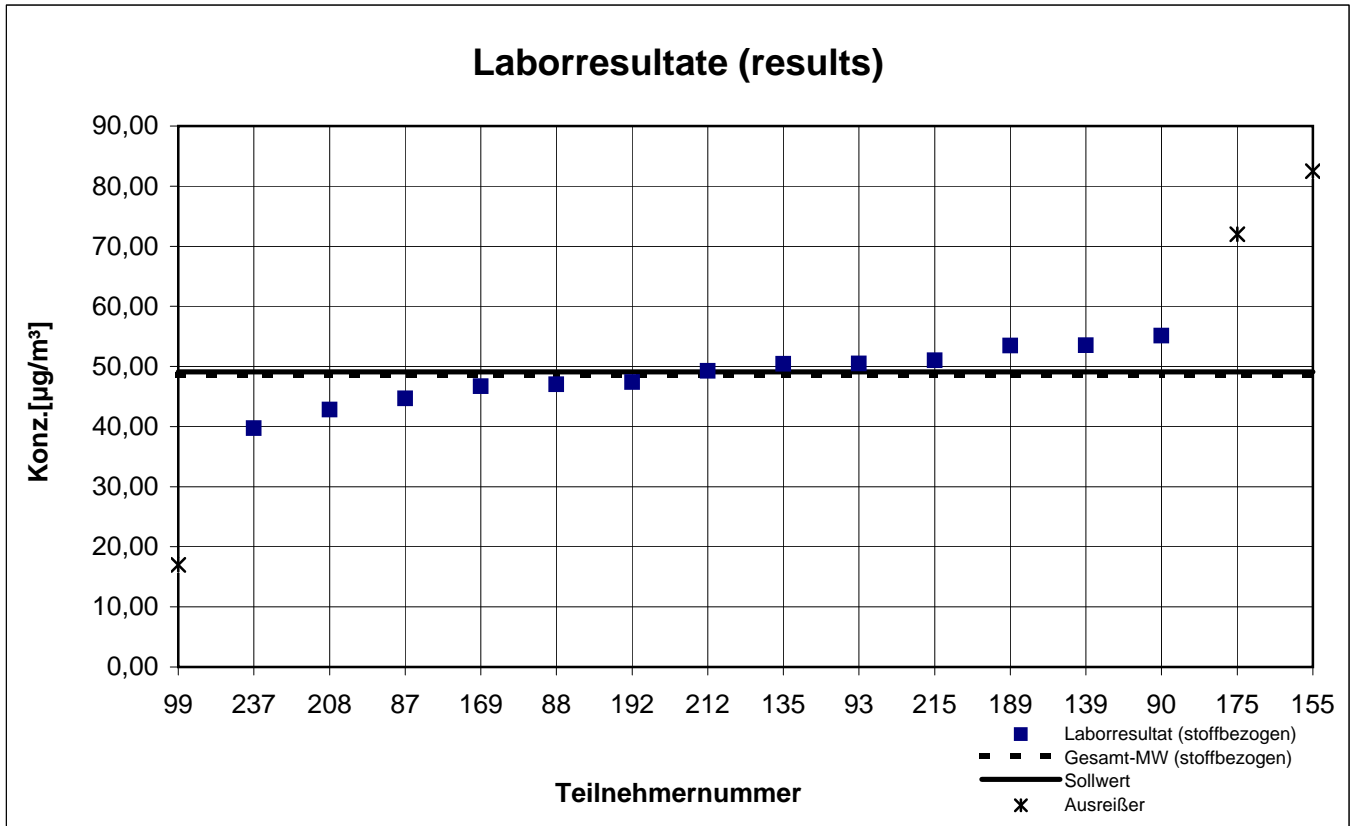
Probe 1 (sample 1)

2-Phenoxyethanol



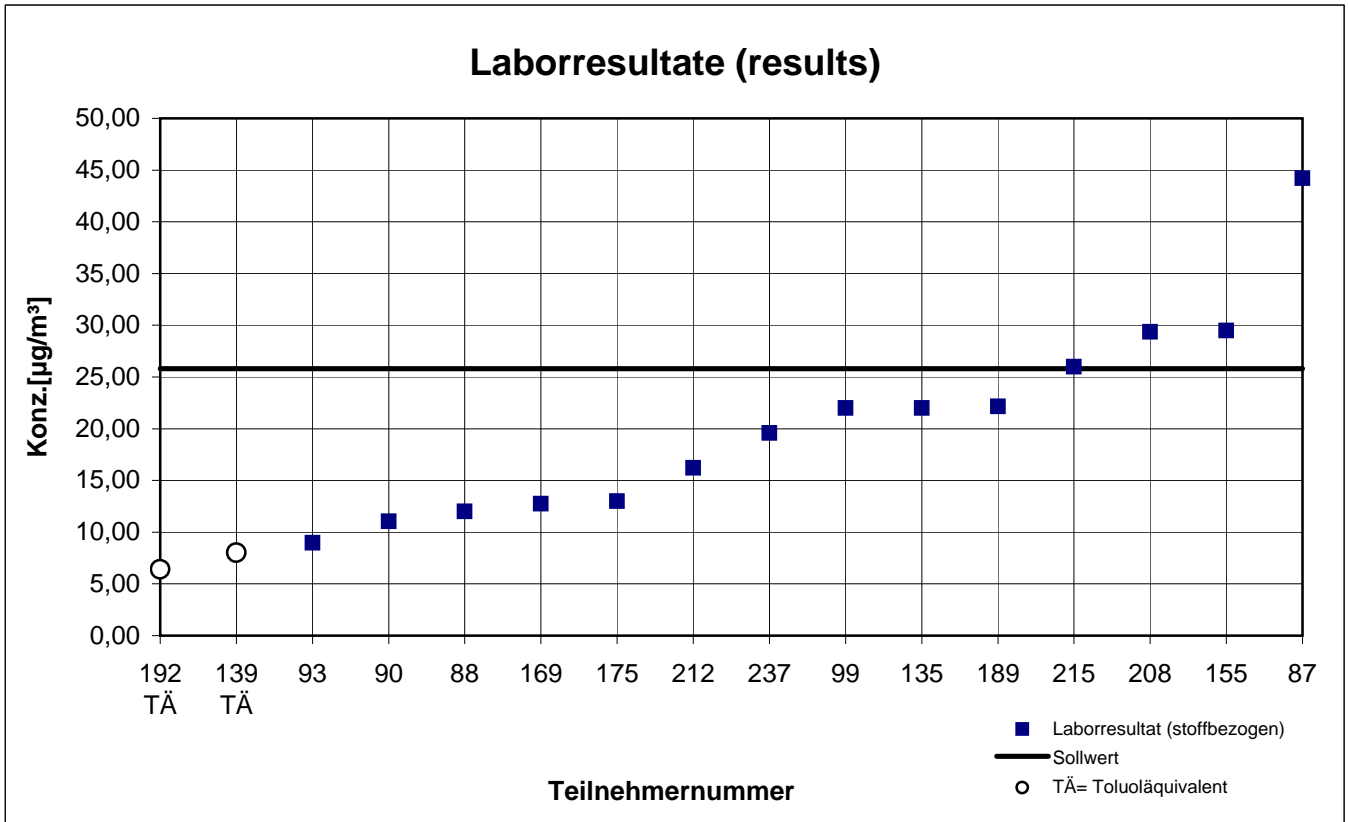
Probe 1 (sample 1)

Dodecan



Probe 1 (sample 1)

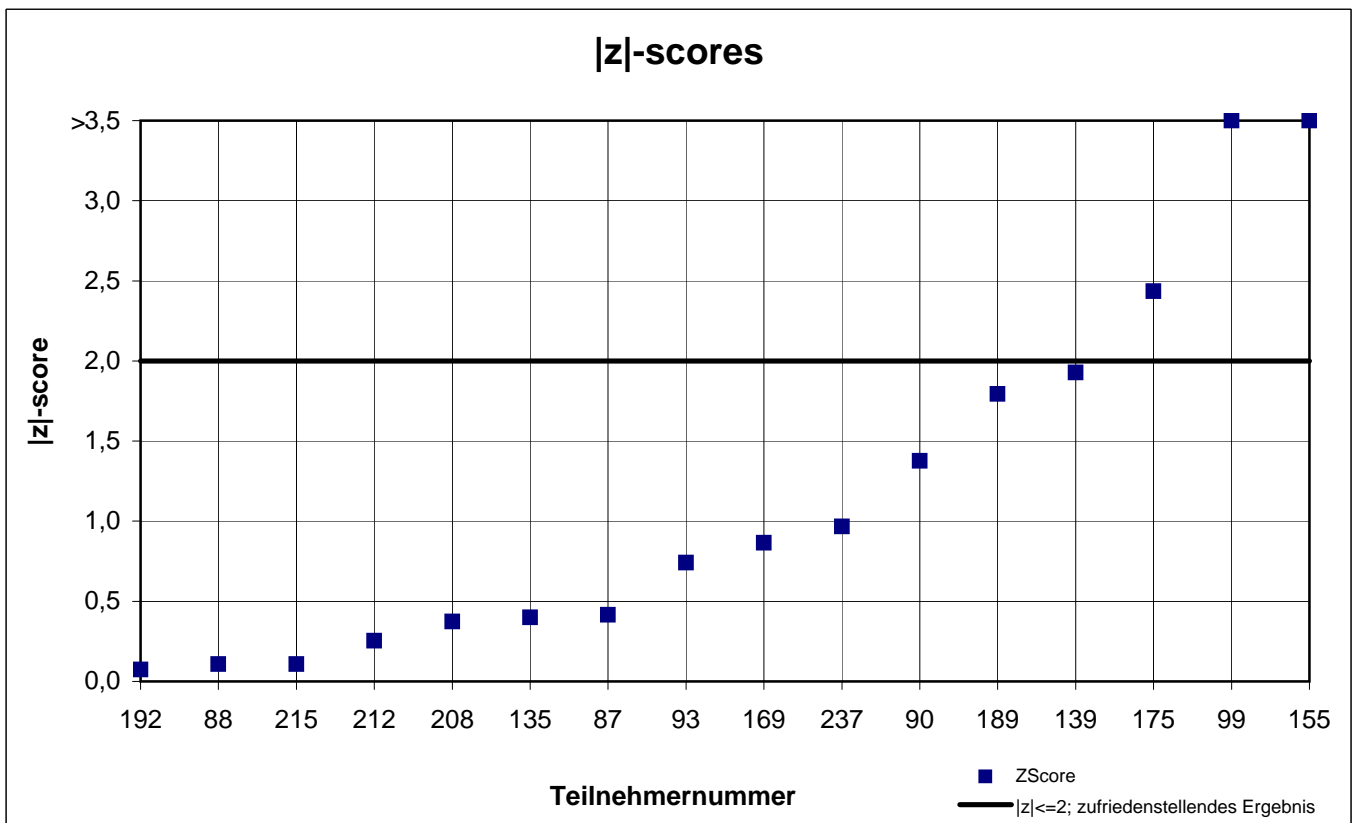
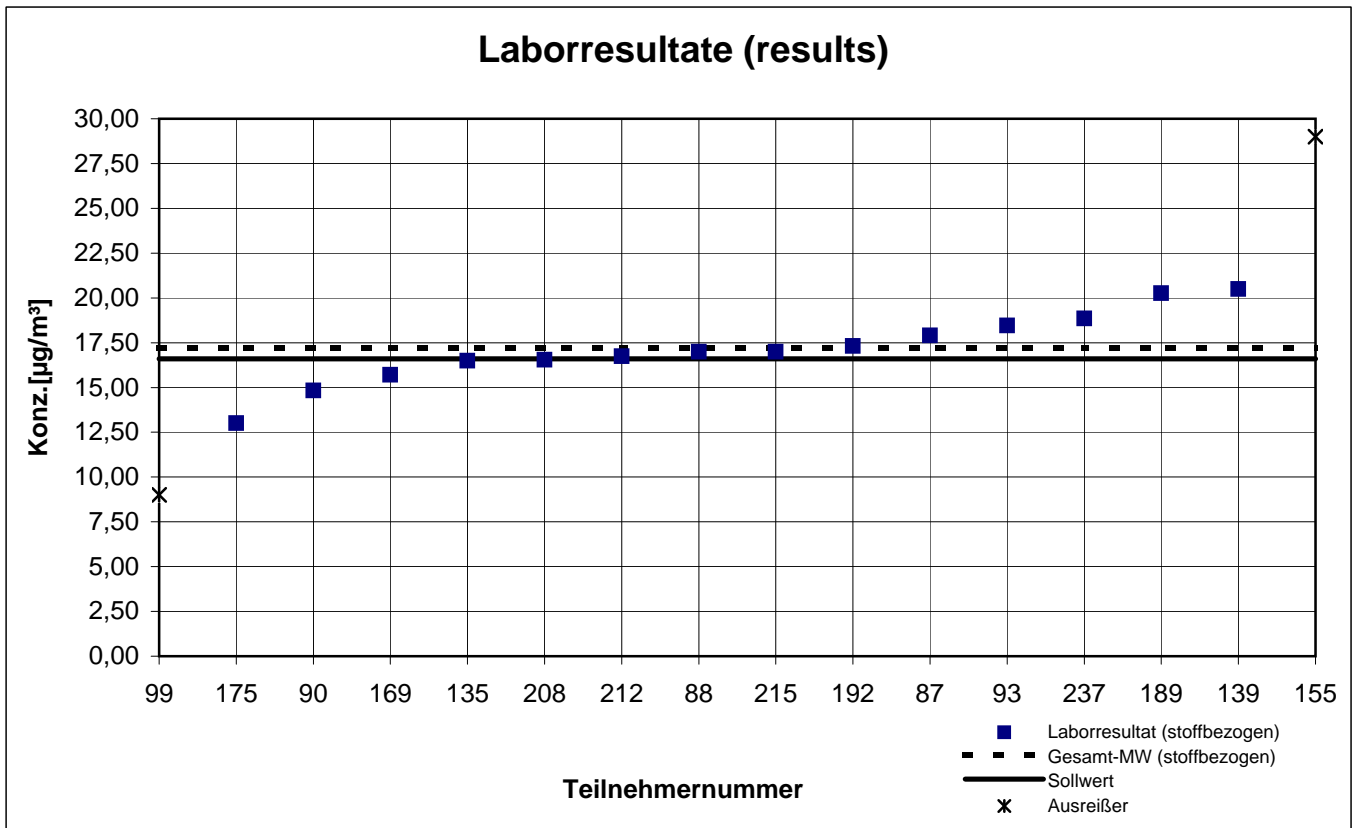
Hexanal



**keine z-score-Auswertung
no z-score evaluation**

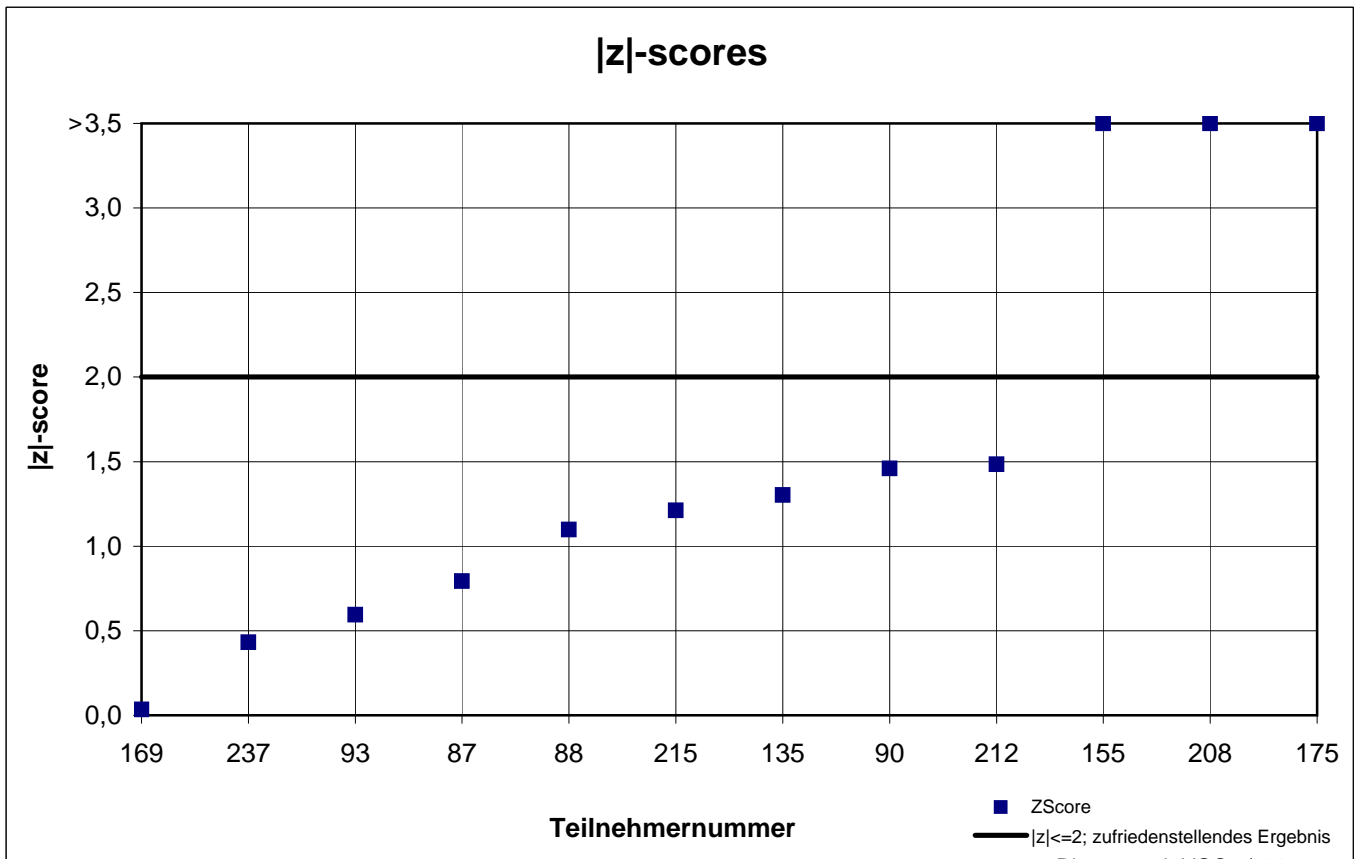
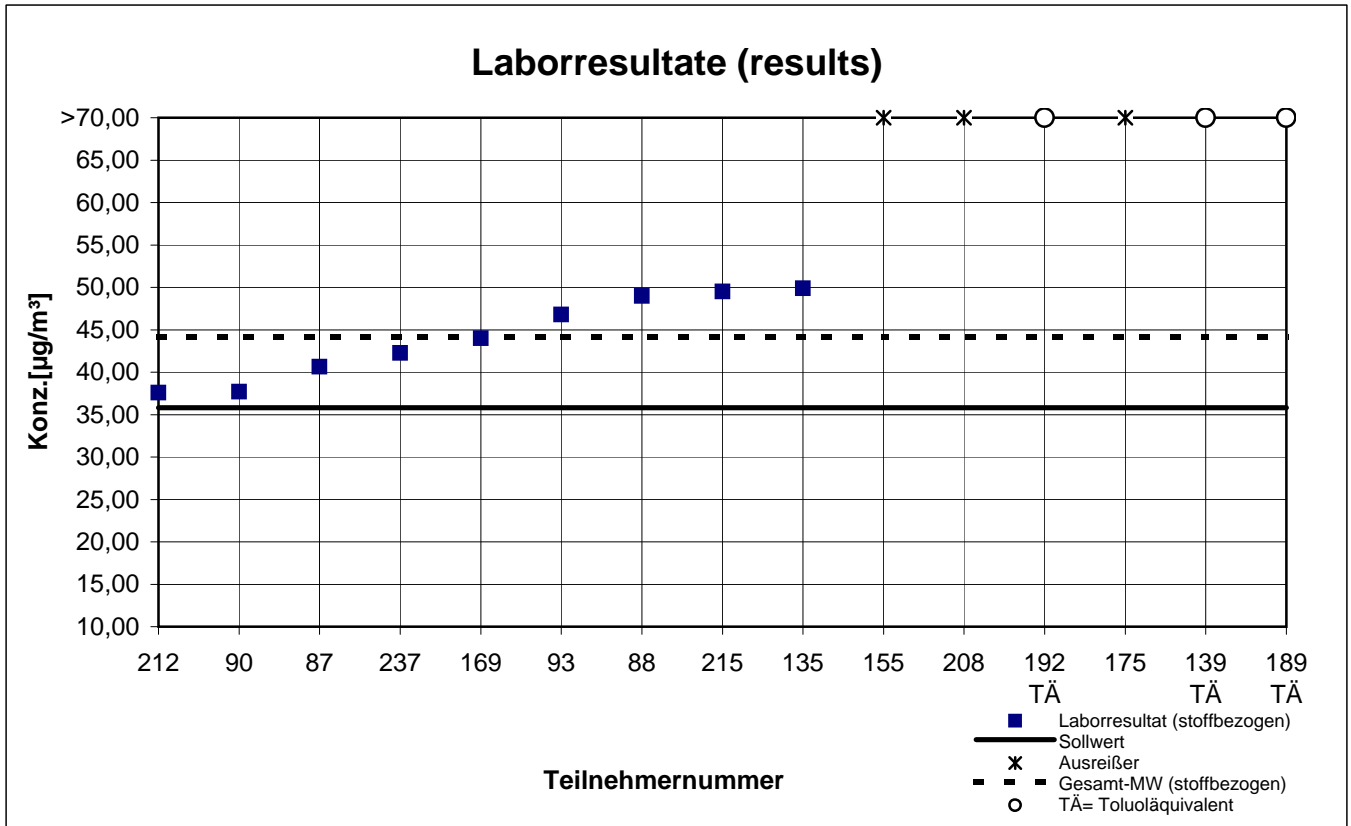
Probe 1 (sample 1)

n-Butylacetat



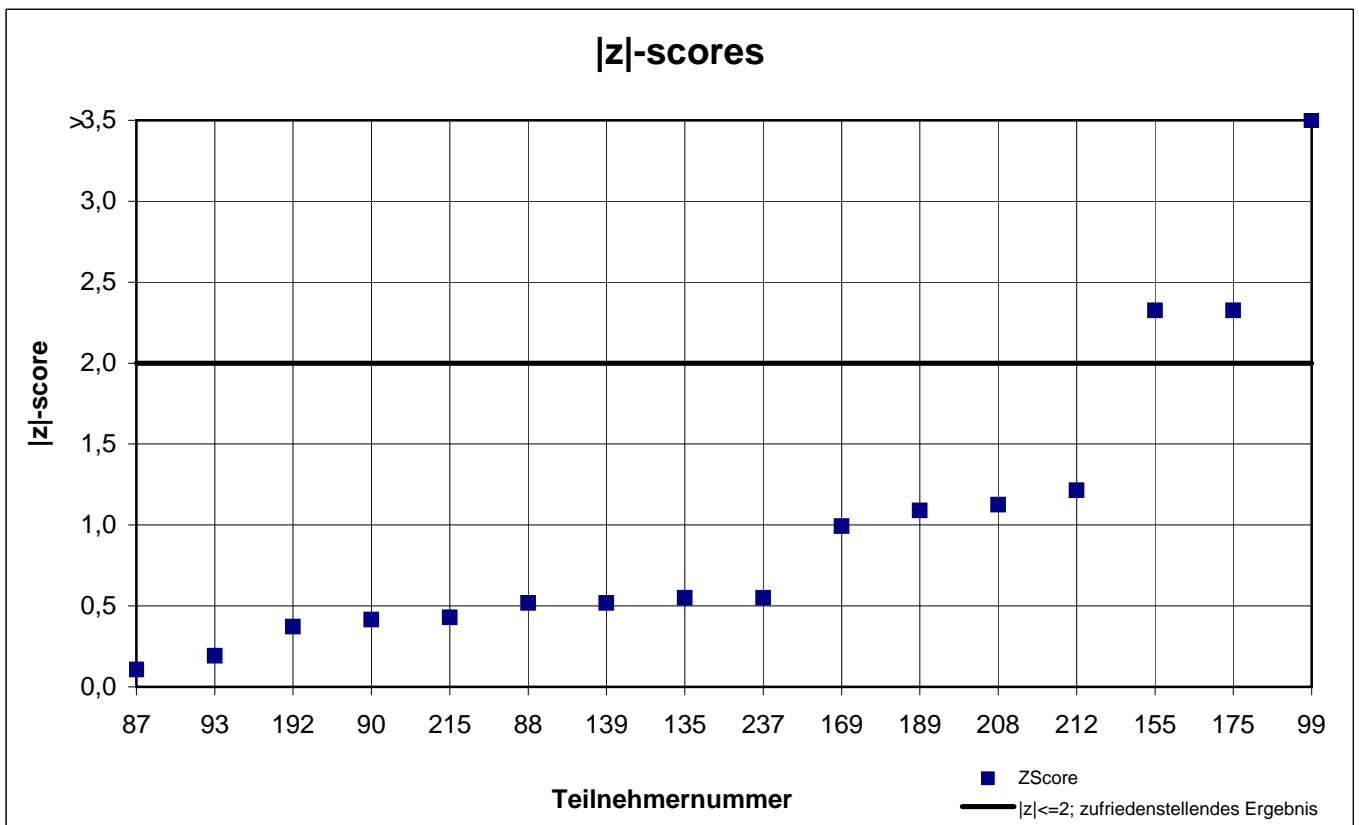
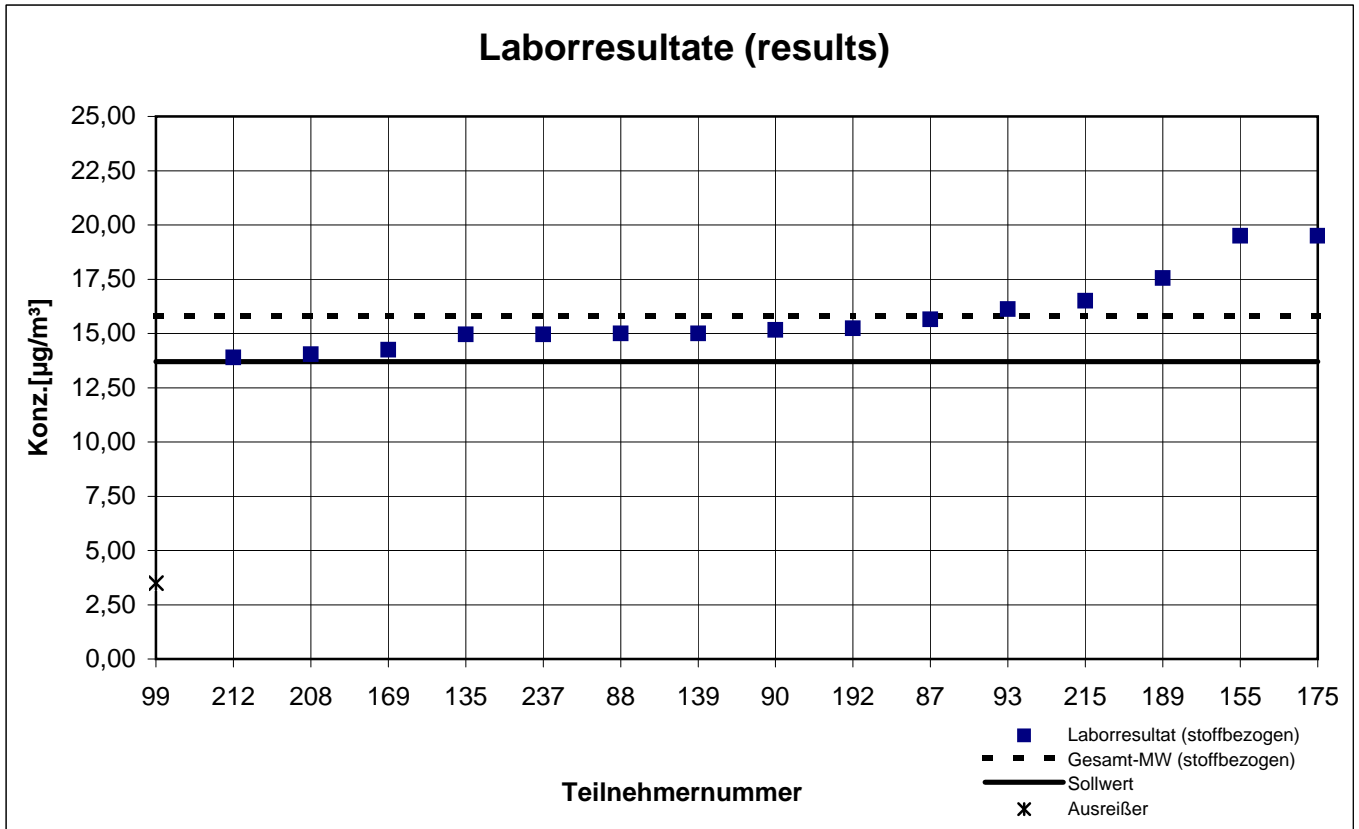
Probe 1 (sample 1)

Octamethylcyclotetrasiloxan



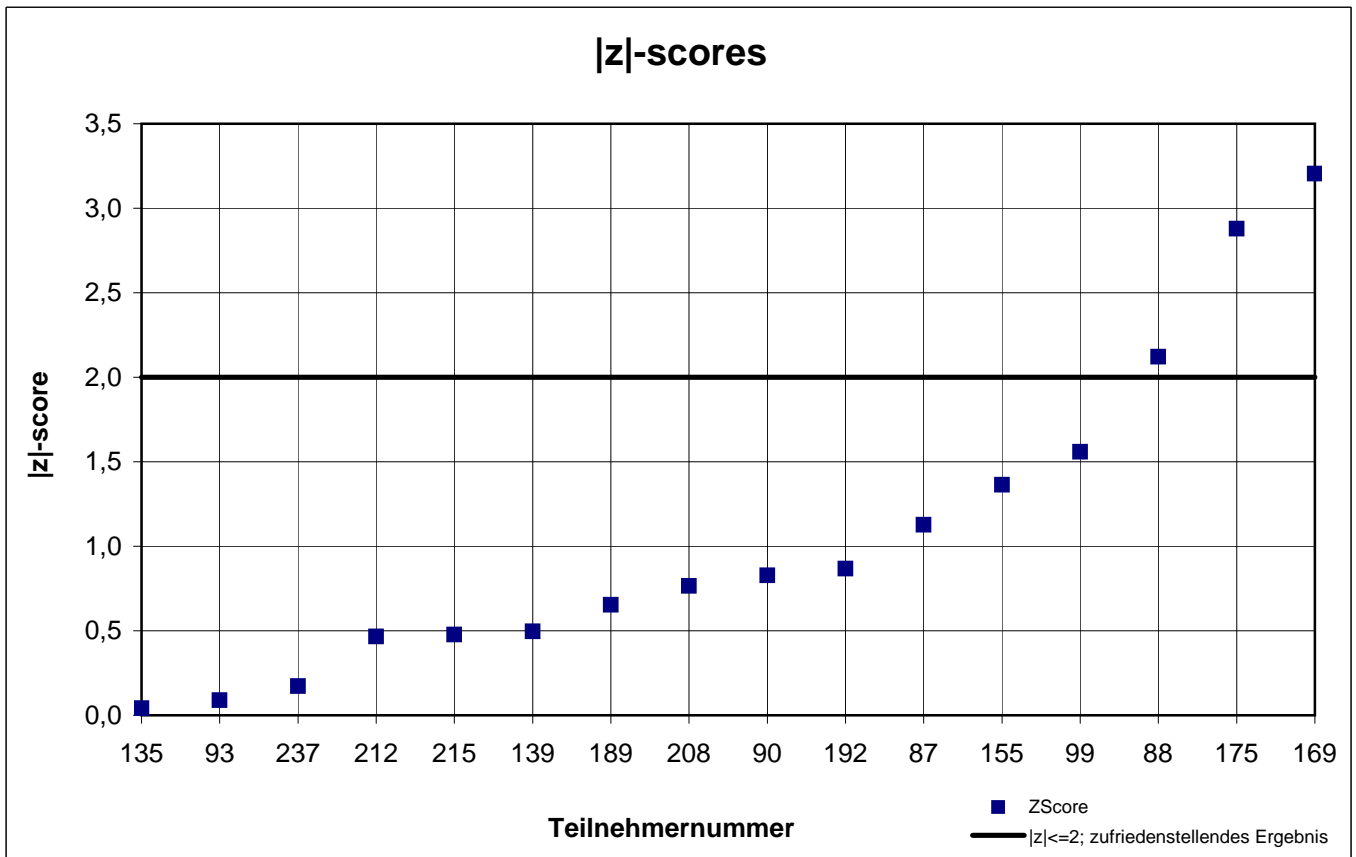
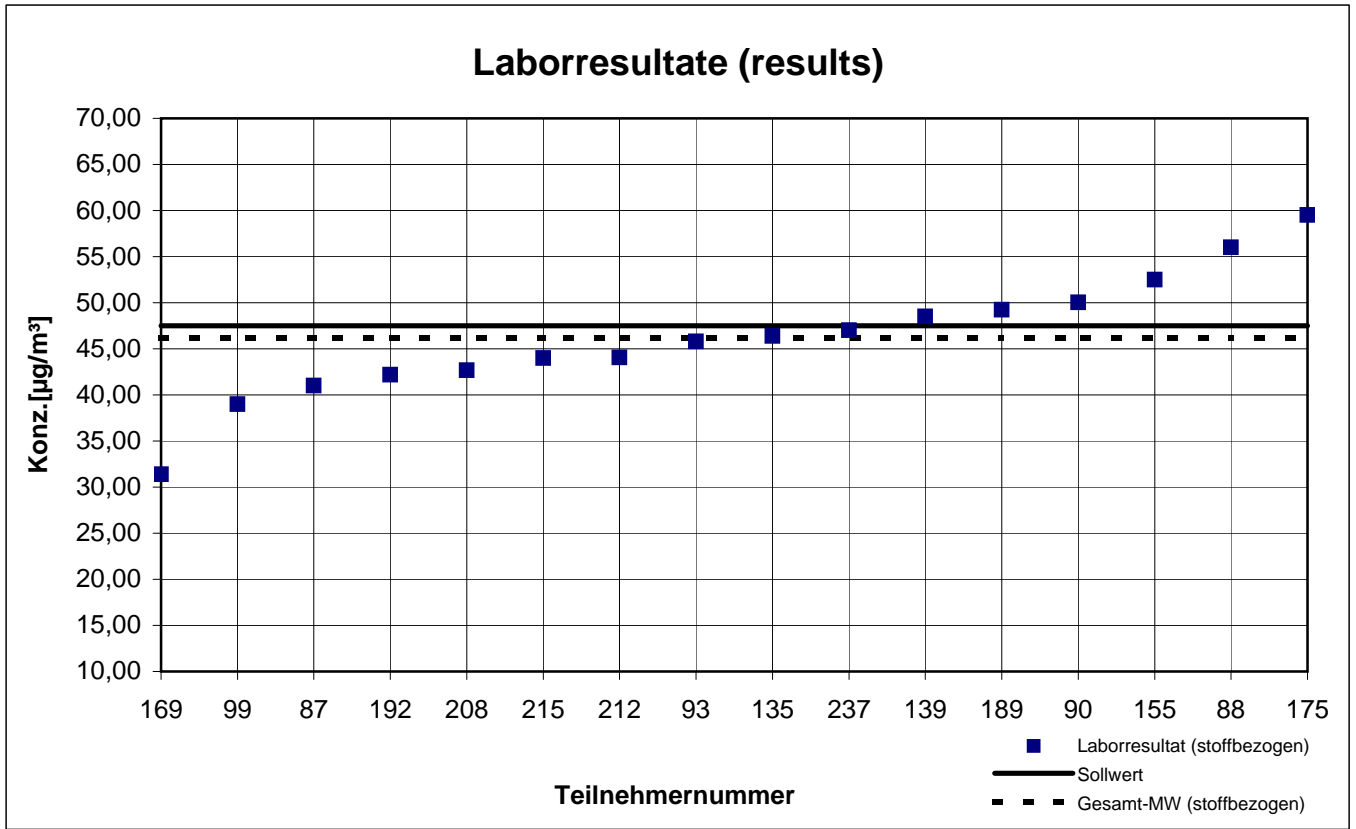
Probe 1 (sample 1)

p-Xylol



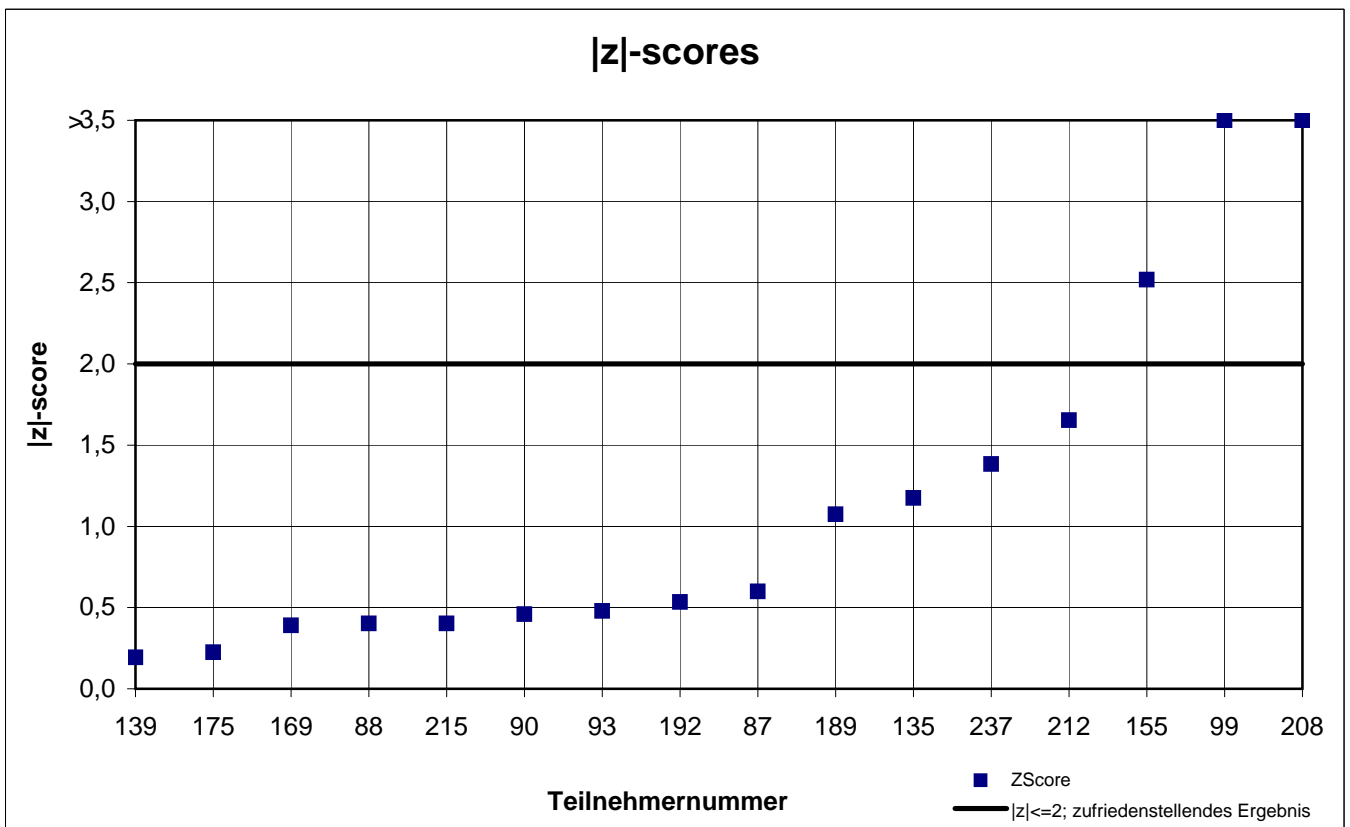
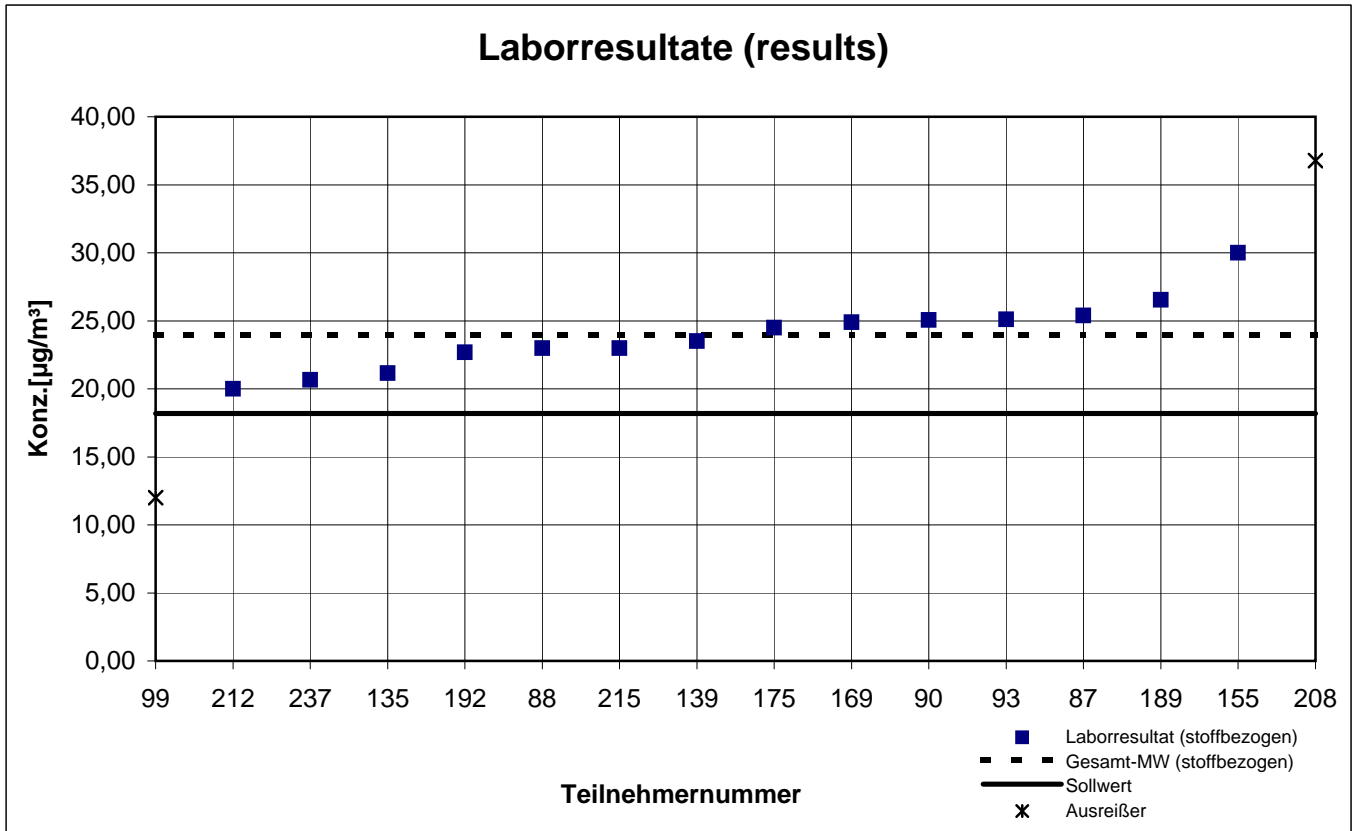
Probe 1 (sample 1)

R(+)-Limonen



Probe 1 (sample 1)

Toluol



Probe 2 - Gesamtauswertung (Teil 1)

Teilnehmer- nummer	2-Butoxyethanol		2-Ethylhexanol		2-Phenoxyethanol		Dodecan		Hexanal	
	Labor- resultat ($\mu\text{g} / \text{m}^3$)	z - score	Labor- resultat ($\mu\text{g} / \text{m}^3$)	z - score	Labor- resultat ($\mu\text{g} / \text{m}^3$)	z - score	Labor- resultat ($\mu\text{g} / \text{m}^3$)	z - score	Labor- resultat ($\mu\text{g} / \text{m}^3$)	z - score
87	27,70		22,85	1,0	57,80	4,3	34,65	0,6	60,65	
88	30,00		30,00	1,8	126,0	2,5	51,00	3,9	29,50	
90	27,38		28,32	1,2	78,41	2,2	41,50	1,3	27,65	
93	28,40		28,74	1,3	97,61	0,3	35,02	0,5	9,17	
99	8,50		23,00	0,9	89,50	1,1	10,00	7,3	25,00	
135	32,05		28,20	1,1	121,2	2,0	41,40	1,3	42,80	
139*	k.A.		k.A.	k.A.	k.A.	k.A.	36,00	0,2	13,00	
155	49,50		44,5	7,5	170,0	6,9	70,50	9,2	61,50	
169	19,25		19,40	2,4	94,60	0,6	36,75	0,0	31,40	
175	23,00		28,50	1,2	101,0	0,0	61,00	6,6	26,00	
189	32,02		29,73	1,7	90,78	1,0	41,77	1,4	45,26	
192	12,63		14,03		41,18		32,34	1,2	9,12	
208	26,28		20,54	1,9	79,08	2,2	32,05	1,3	45,68	
212	31,15		19,55	2,3	95,35	0,5	39,60	0,8	30,60	
215	33,50		28,00	1,0	109,0	0,8	38,50	0,5	25,50	
237	36,35		23,30	0,8	126,9	2,6	30,80	1,6	42,45	

Die mit gekennzeichneten Felder sind Ausreißer!

* eigene Probenahme vor Ort

 Toluoläquivalent

	2-Butoxy- ethanol	2-Ethyl- hexanol	2-Phenoxy- ethanol	Dodecan	Hexanal
Gesamtmittelwert c_k [$\mu\text{g} / \text{m}^3$]		25,39	100,8	36,70	
Standardabweichung S_k [$\mu\text{g} / \text{m}^3$]		4,024	16,731	3,879	
rel. Standardabweichung [%]		15,85	16,60	10,57	
Sollwert [$\mu\text{g} / \text{m}^3$]	30,50	28,00	105,3	39,10	46,80

Probe 2 - Gesamtauswertung (Teil 2)

Teilnehmer- nummer	n-Butylacetat		Octamethylcyclo- tetrasiloxan		p-Xylol		R(+)-Limonen		Toluol	
	Labor- resultat ($\mu\text{g} / \text{m}^3$)	z - score	Labor- resultat ($\mu\text{g} / \text{m}^3$)	z - score	Labor- resultat ($\mu\text{g} / \text{m}^3$)	z - score	Labor- resultat ($\mu\text{g} / \text{m}^3$)	z - score	Labor- resultat ($\mu\text{g} / \text{m}^3$)	z - score
87	35,05	0,0	36,90	1,1	27,70	0,8	28,55	1,9	41,60	0,9
88	40,00	1,4	50,50	2,1	34,50	1,4	45,50	2,9	44,50	0,2
90	34,43	0,2	36,82	1,2	30,51	0,1	38,98	1,0	46,15	0,1
93	35,94	0,2	41,46	0,0	30,28	0,0	32,22	0,9	45,62	0,0
99	19,50	4,5	k.A.	k.A.	13,00	5,7	36,00	0,2	24,00	4,7
135	37,25	0,6	43,05	0,3	31,40	0,4	38,65	0,9	45,10	0,1
139*	33,00	0,6	98,50	13,7	24,00	2,1	30,00	1,5	39,00	1,4
155	67,50	9,2	80,00	9,2	45,50	5,0	44,00	2,4	66,50	4,6
169	32,70	0,7	43,45	0,4	30,85	0,2	30,25	1,4	49,40	0,9
175	27,50	2,2	99,50	13,9	42,00	3,9	51,00	4,4	53,00	1,6
189	37,69	0,7	131,70	21,6	35,46	1,7	38,35	0,8	51,58	1,3
192	37,95	0,8	78,80	8,9	32,99	0,9	30,71	1,3	47,57	0,5
208	33,75	0,4	67,80	6,3	27,97	0,8	33,40	0,6	43,20	0,5
212	33,75	0,4	37,20	1,1	28,55	0,6	35,30	0,0	41,45	0,9
215	34,00	0,3	41,00	0,2	28,00	0,7	29,50	1,7	44,50	0,2
237	39,60	1,3	44,25	0,6	30,90	0,2	39,20	1,1	44,45	0,2

Die mit gekennzeichneten Felder sind Ausreißer!

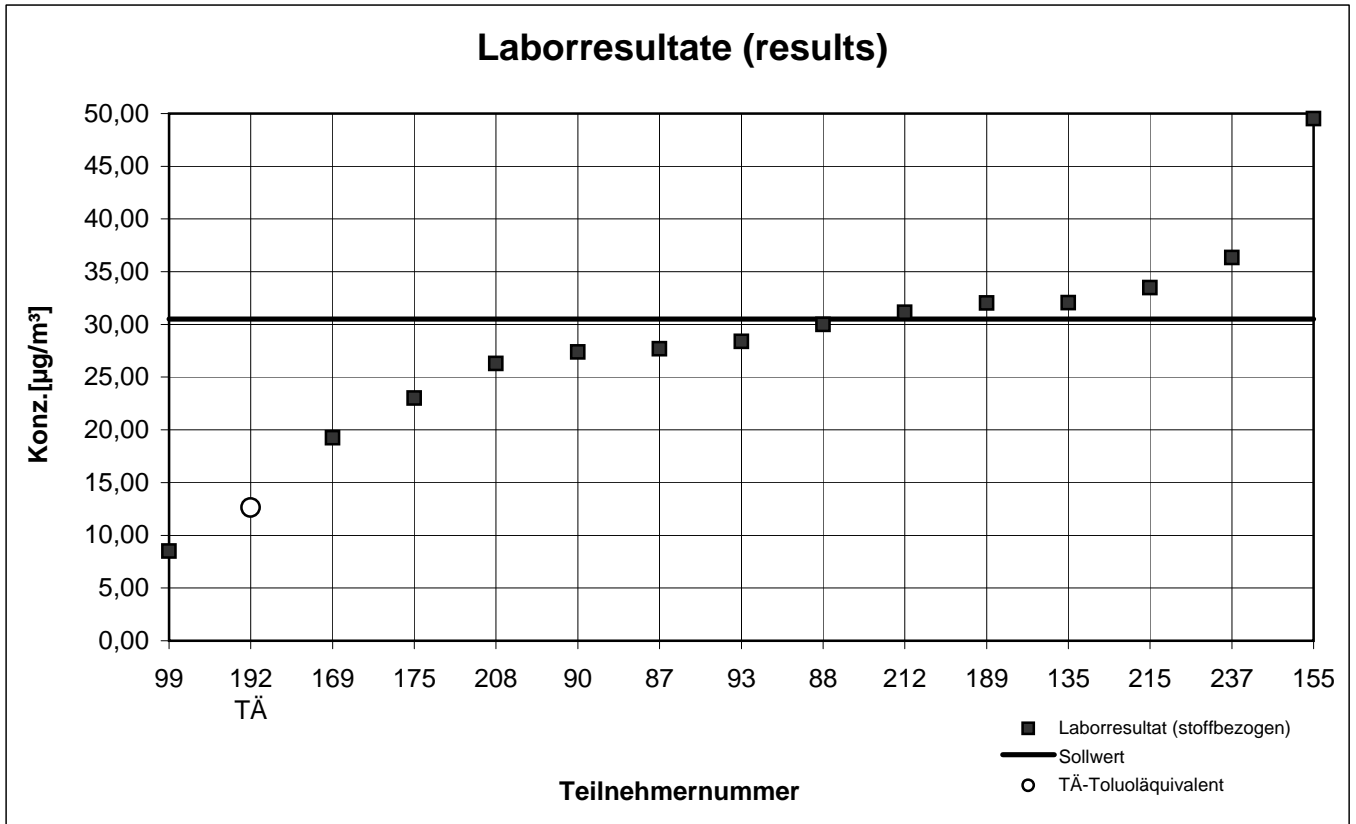
* eigene Probenahme vor Ort

 Toluoläquivalent

	n-Butyl- acetat	OMCTS	p-Xylol	R(+)- Limonen	Toluol
Gesamtmittelwert c_k [$\mu\text{g} / \text{m}^3$]	35,19	41,63	30,24	35,37	45,51
Standardabweichung S_k [$\mu\text{g} / \text{m}^3$]	3,253	4,422	3,077	5,322	3,879
rel. Standardabweichung [%]	9,24	10,62	10,18	15,04	8,52
Sollwert [$\mu\text{g} / \text{m}^3$]	33,90	34,80	28,10	37,70	36,60

Probe 2 (sample 2)

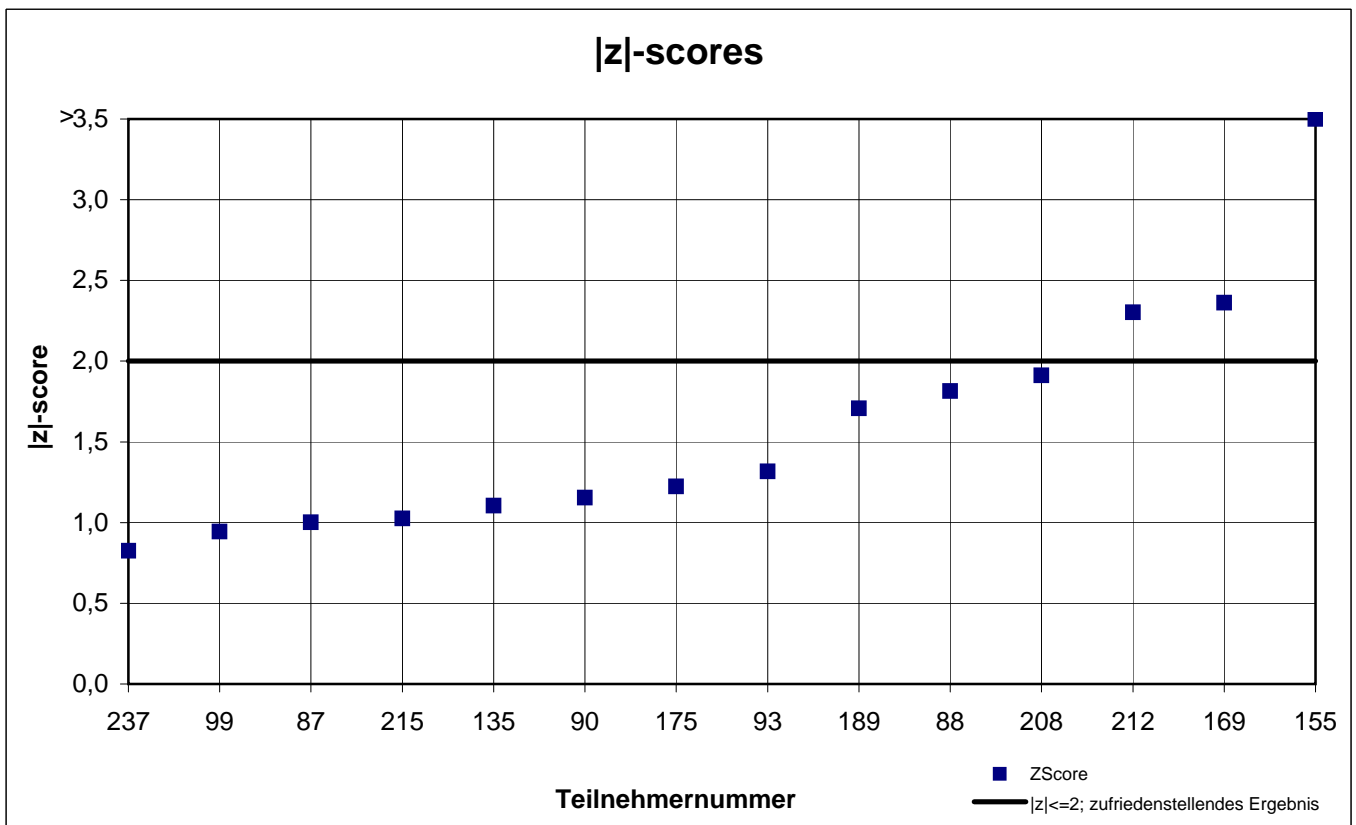
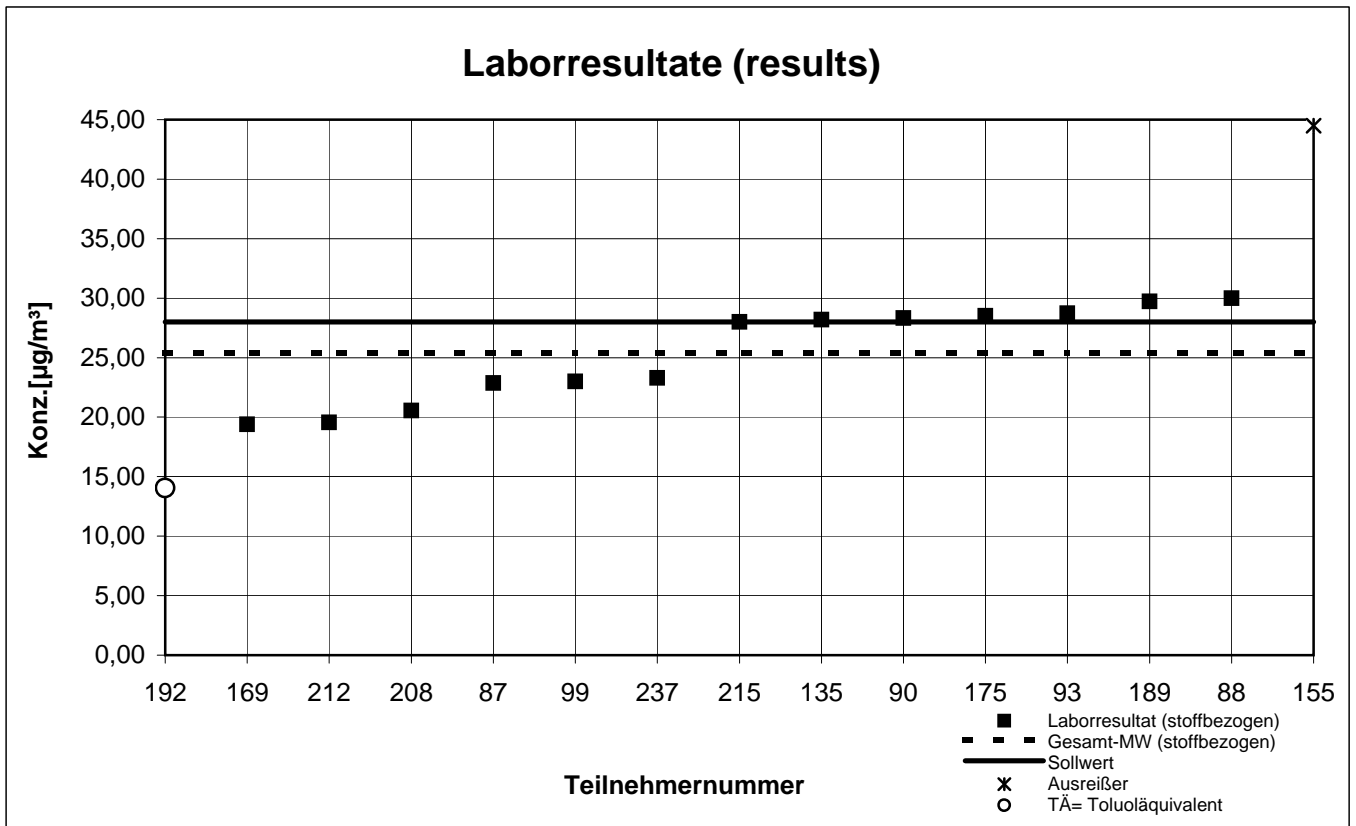
2-Butoxyethanol



**keine z-score-Auswertung
no z-score evaluation**

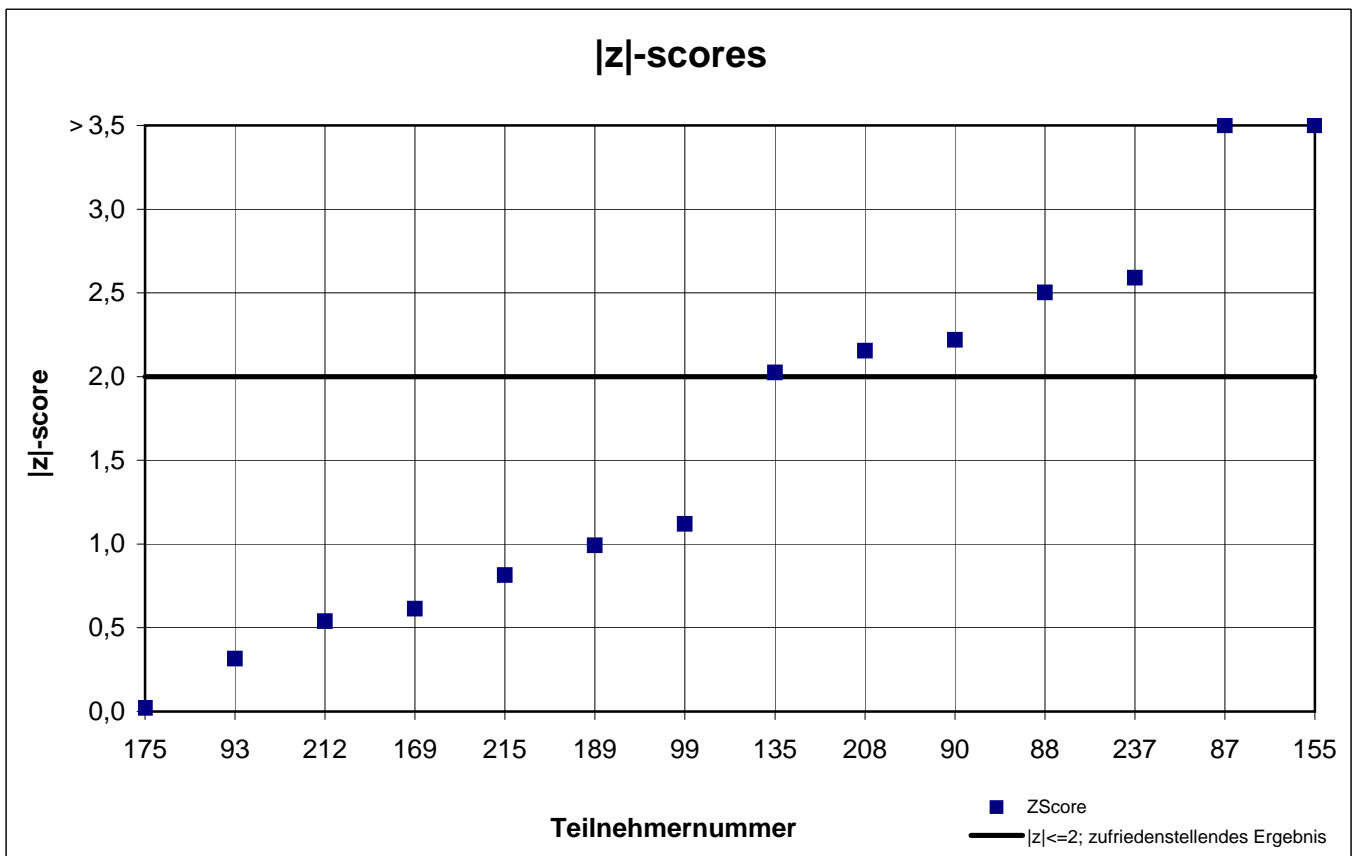
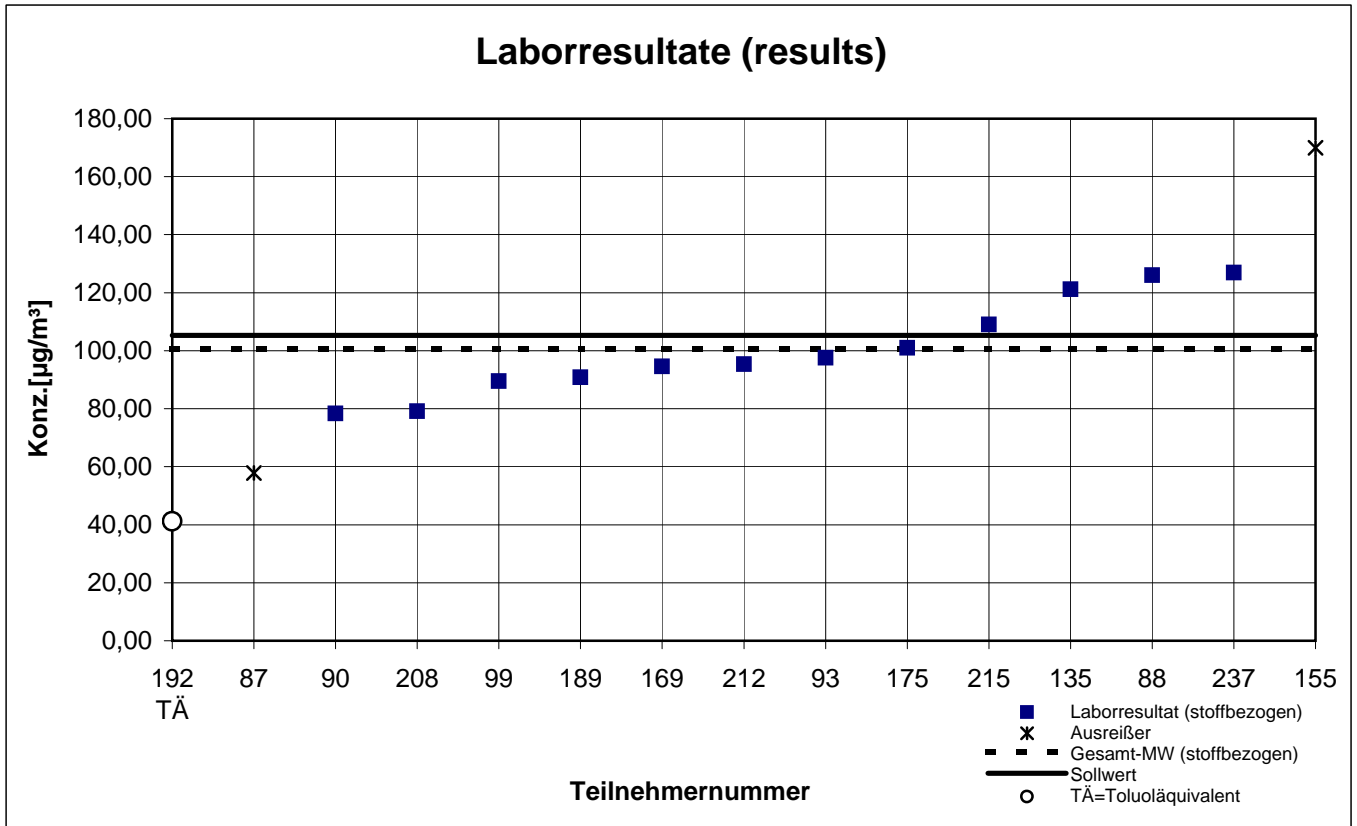
Probe 2 (sample 2)

Ethylhexanol



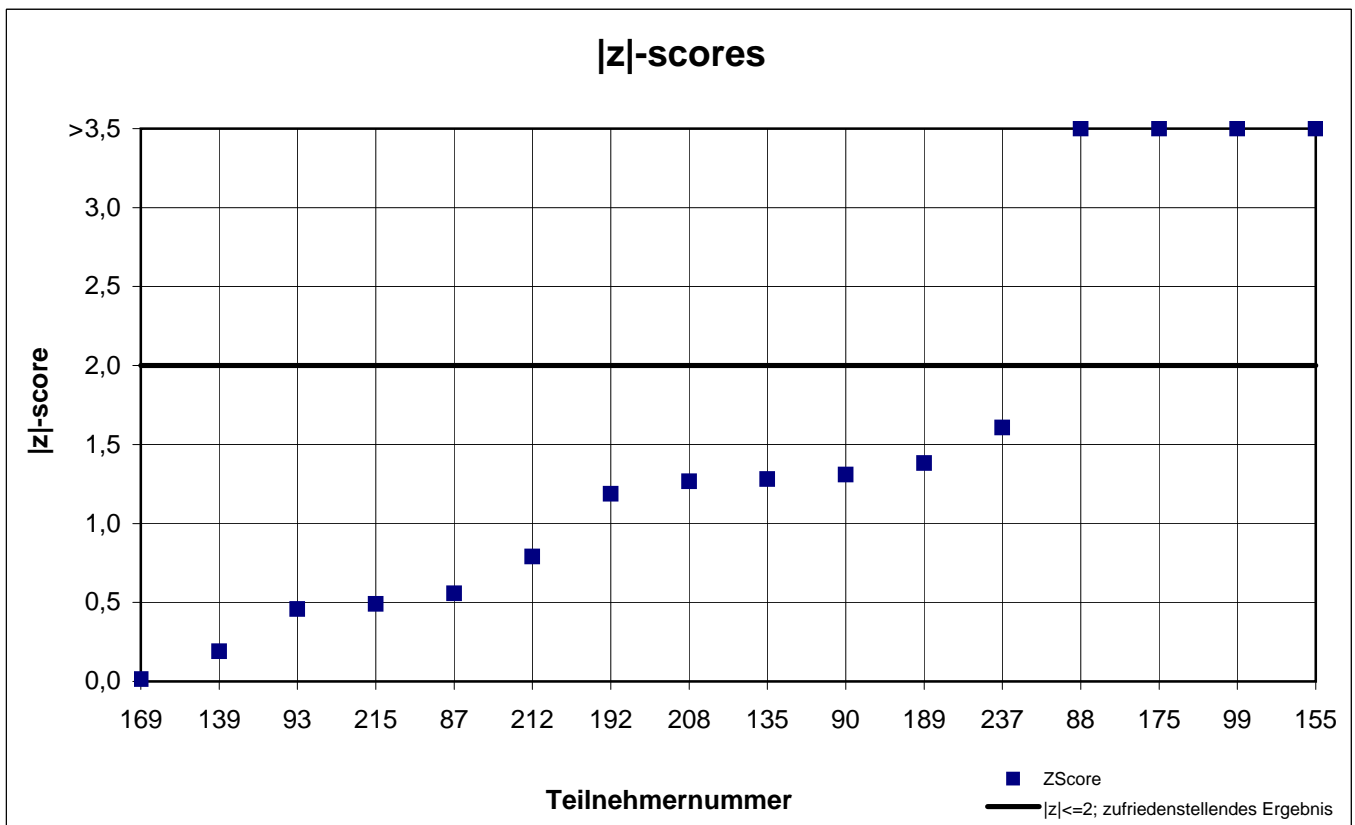
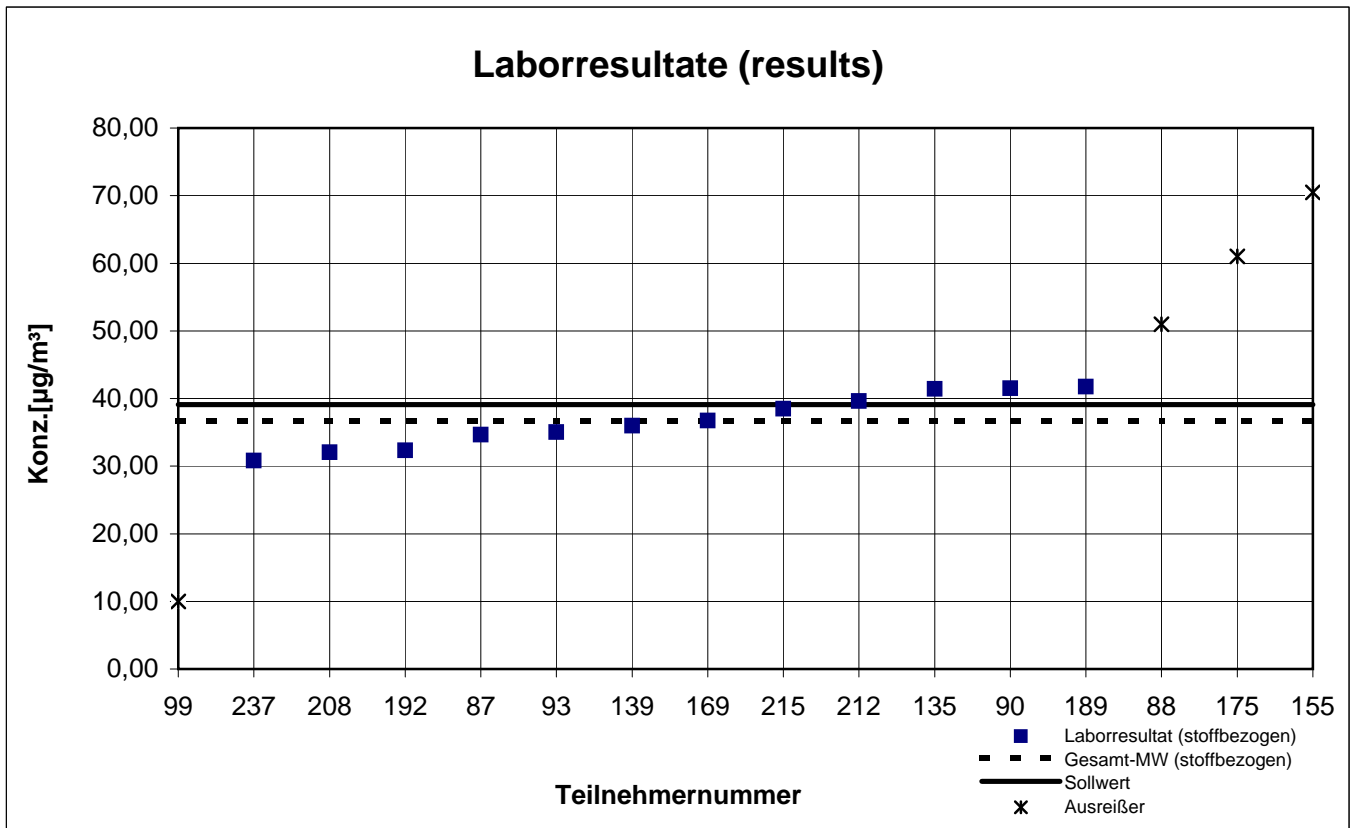
Probe 2 (sample 2)

2-Phenoxyethanol



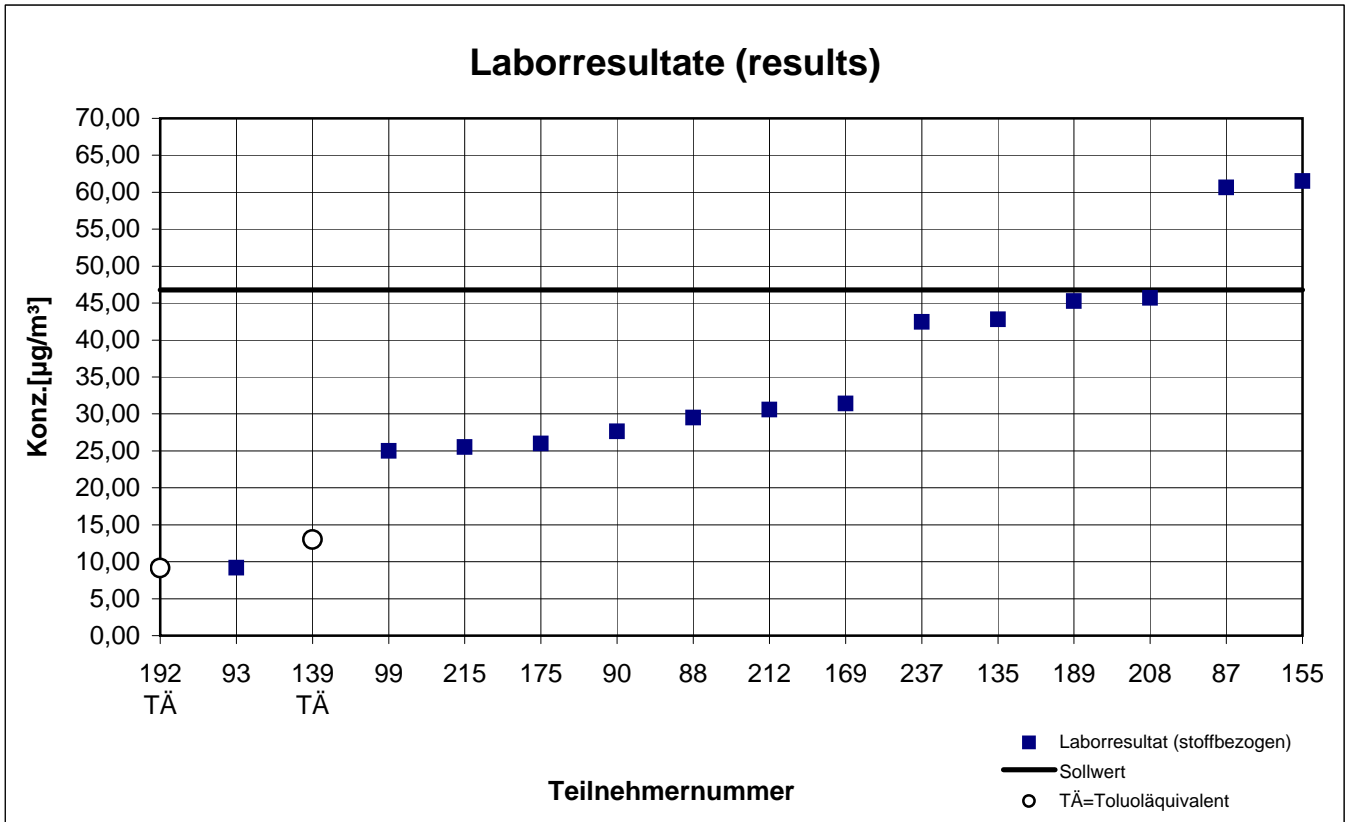
Probe 2 (sample 2)

Dodecan



Probe 2 (sample 2)

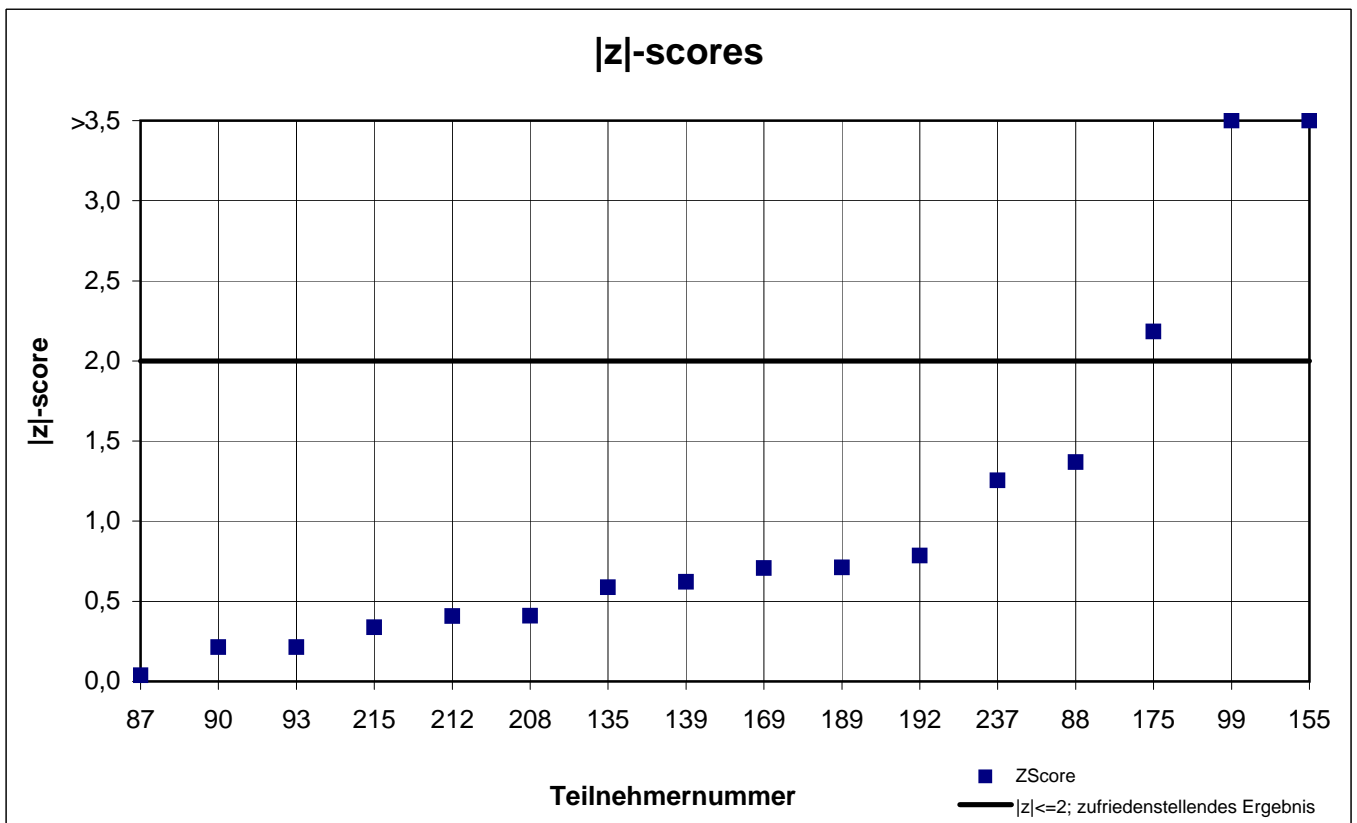
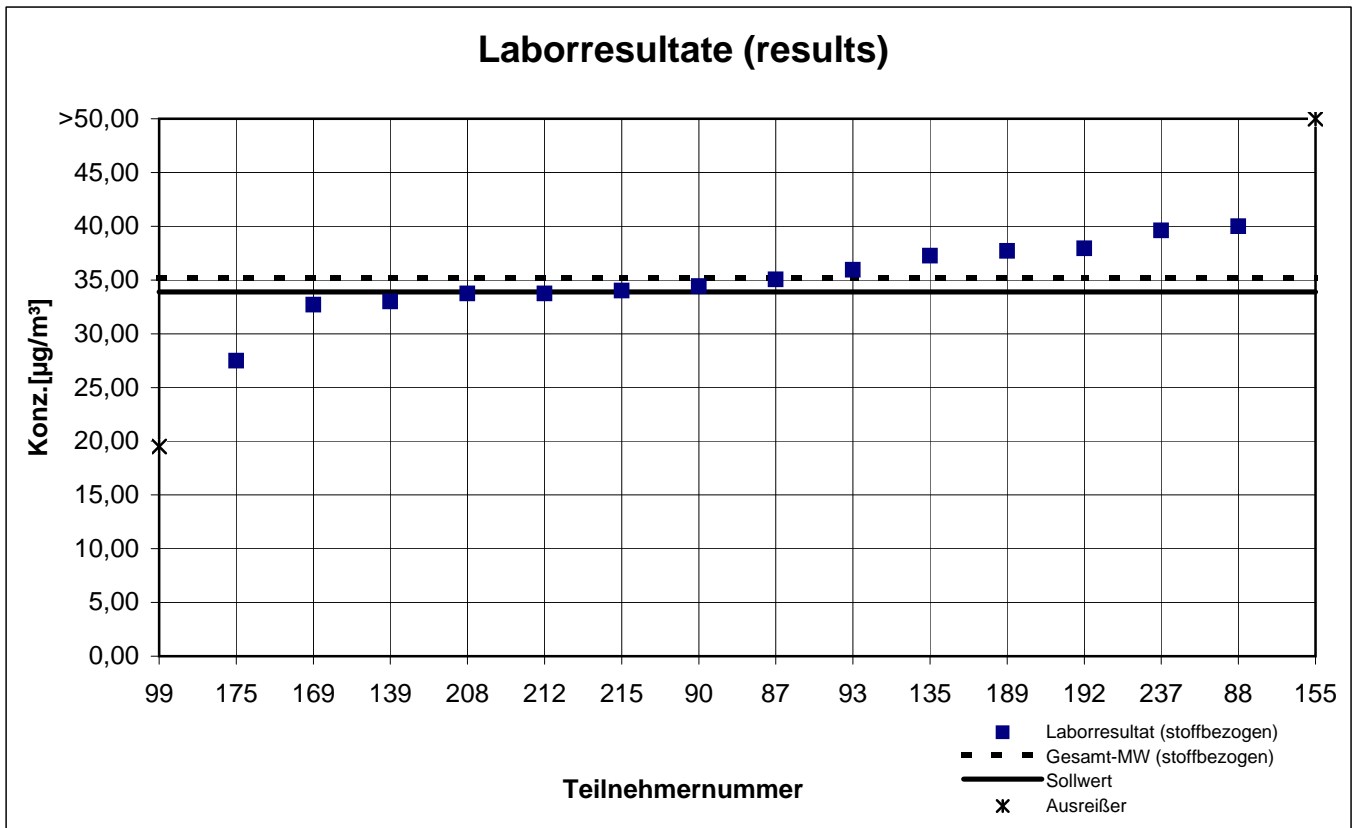
Hexanal



keine z-score-Auswertung
no z-score evaluation

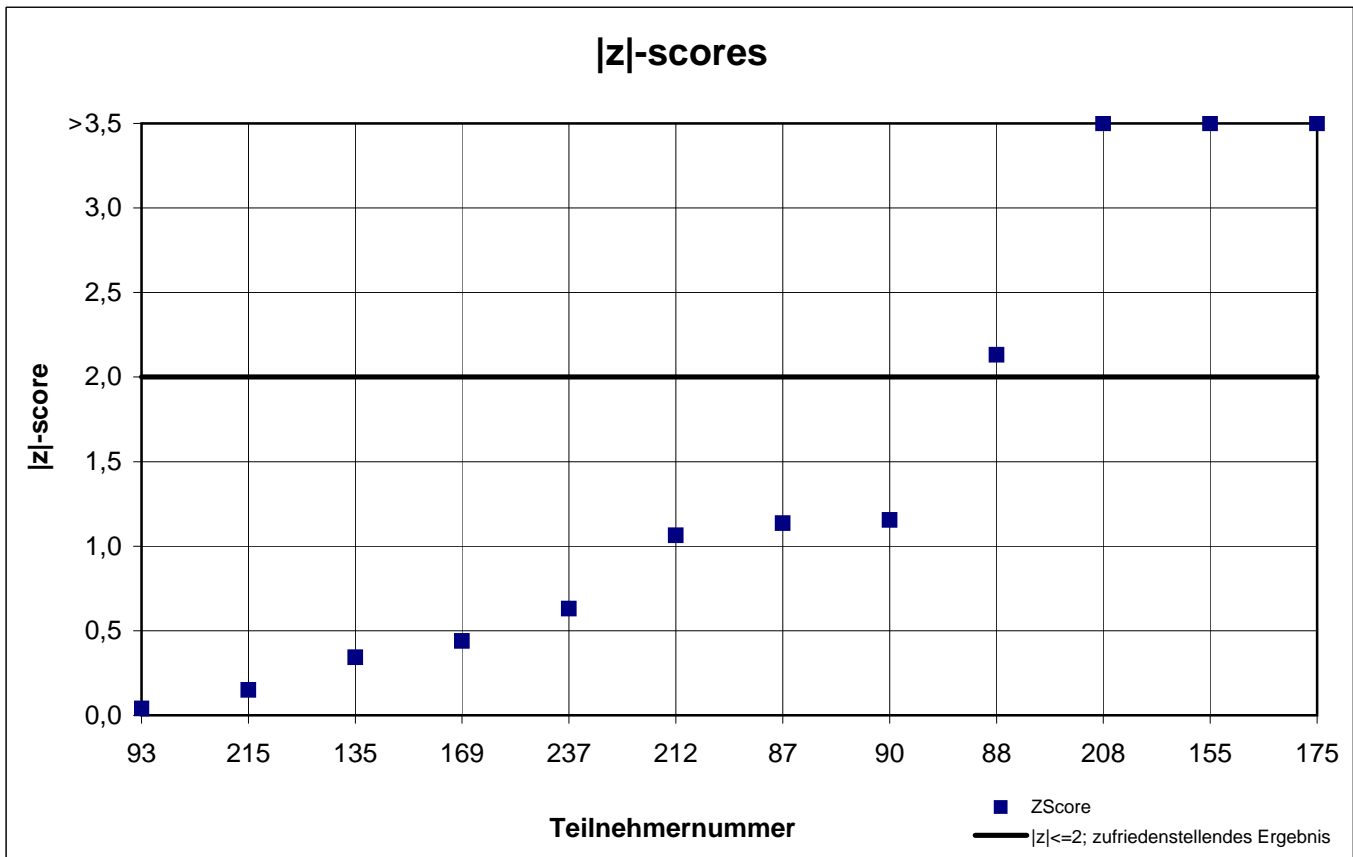
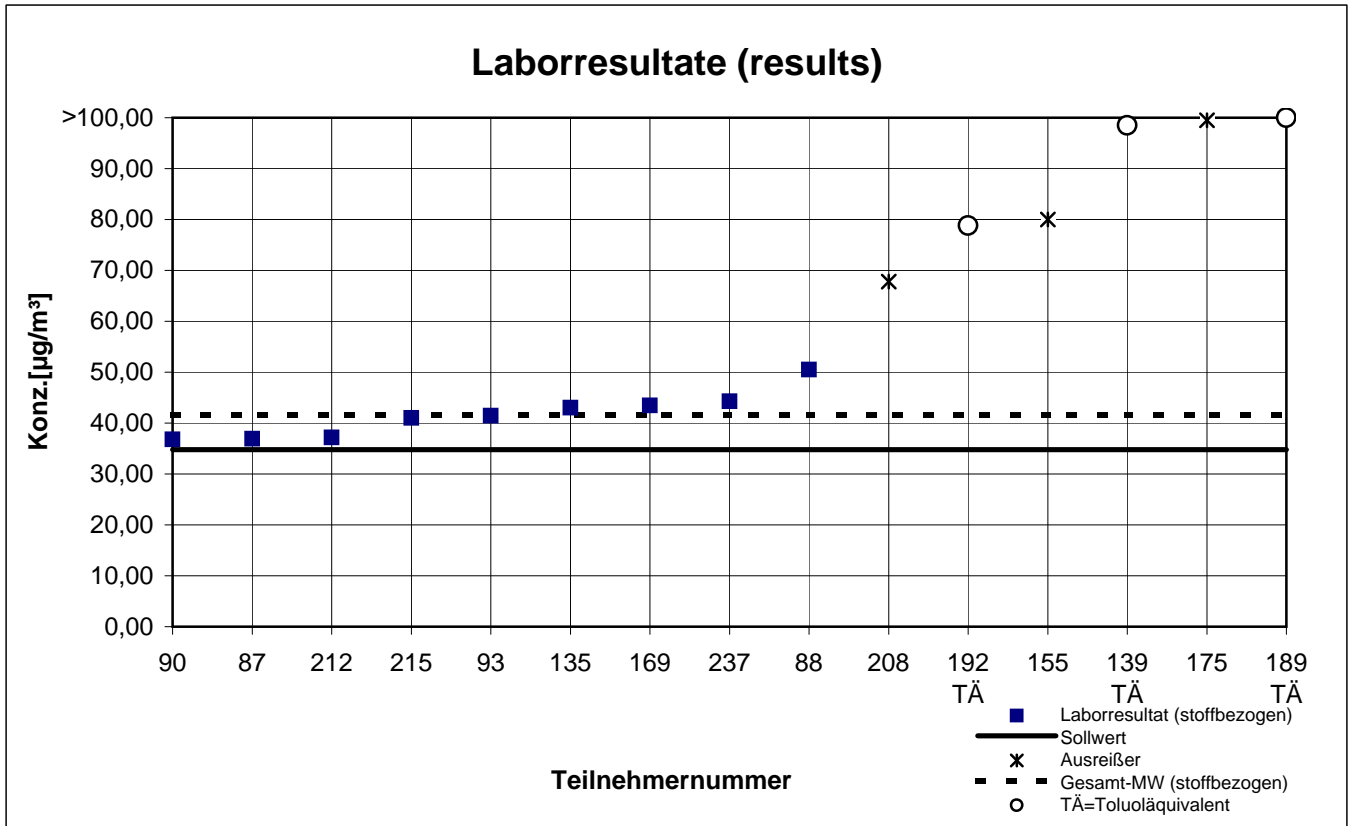
Probe 2 (sample 2)

n-Butylacetat



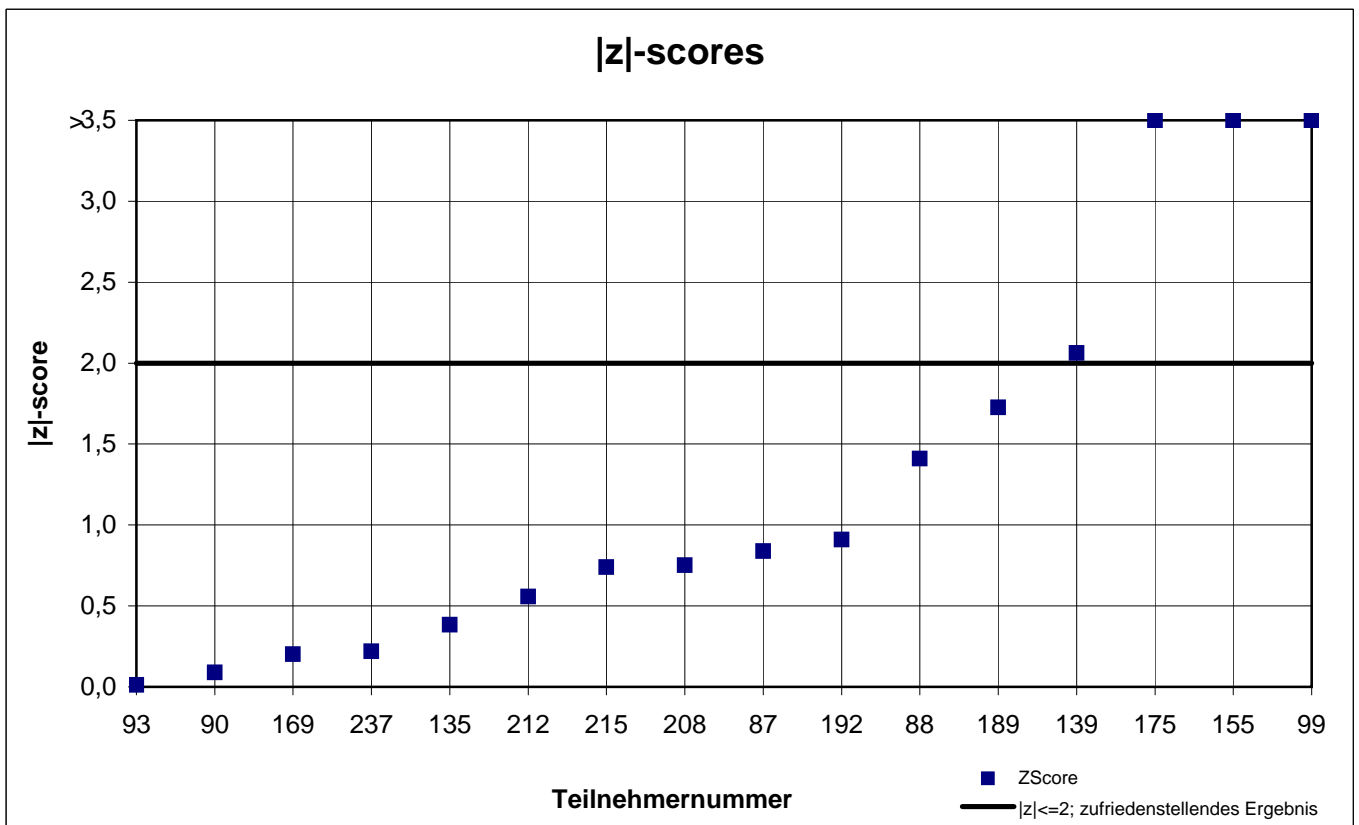
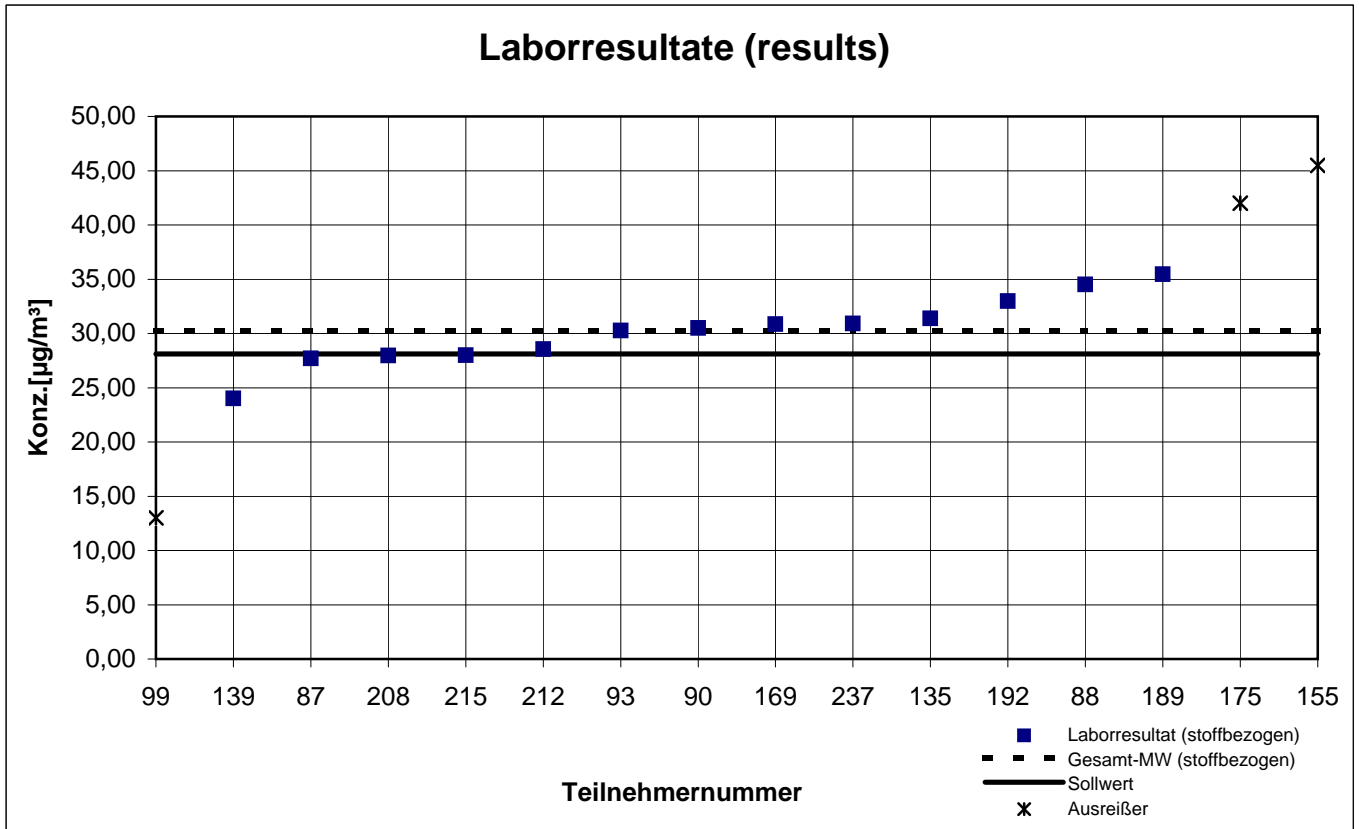
Probe 2 (sample 2)

Octamethylcyclotetrasiloxan



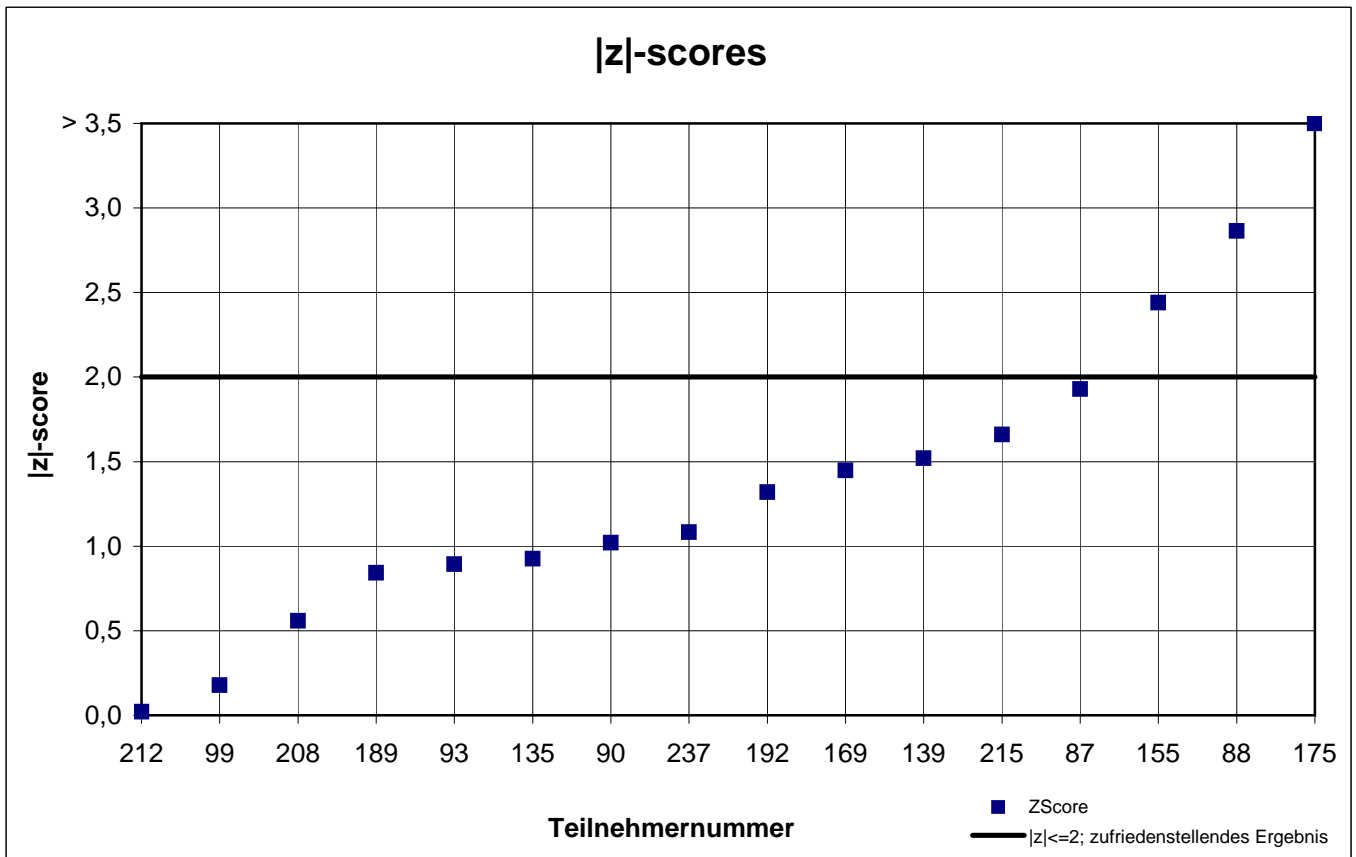
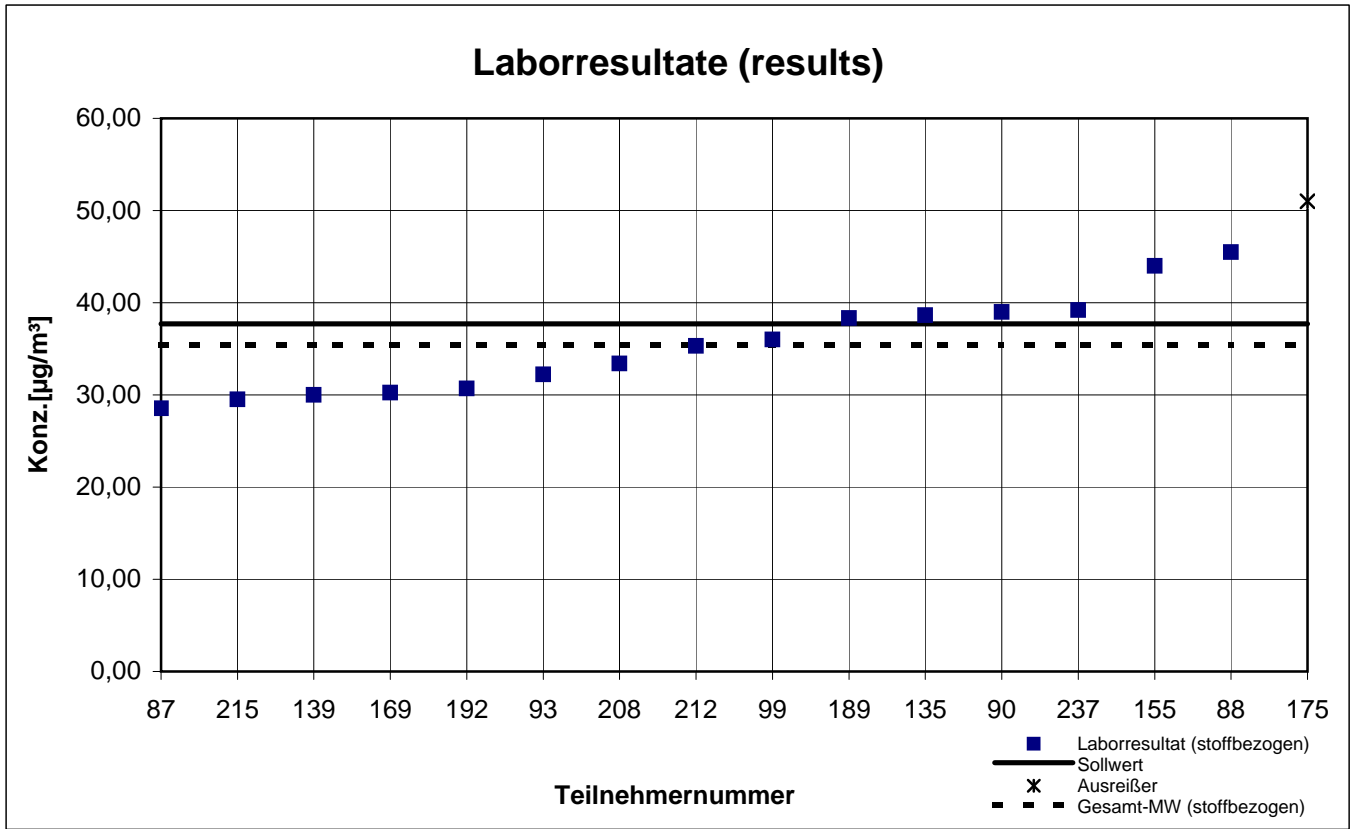
Probe 2 (sample 2)

p-Xylol



Probe 2 (sample 2)

R(+)-Limonen



Probe 2 (sample 2)

Toluol

