

results sample 1

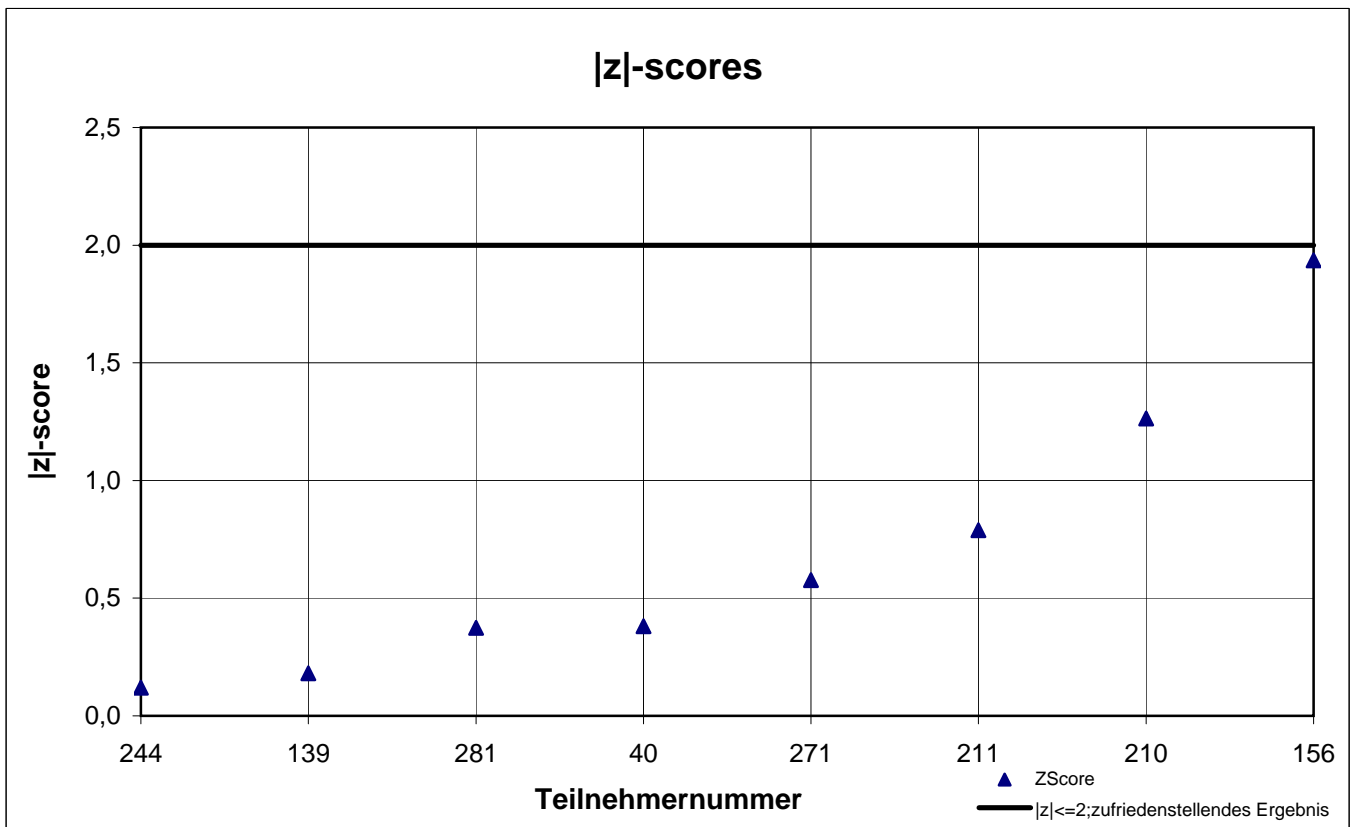
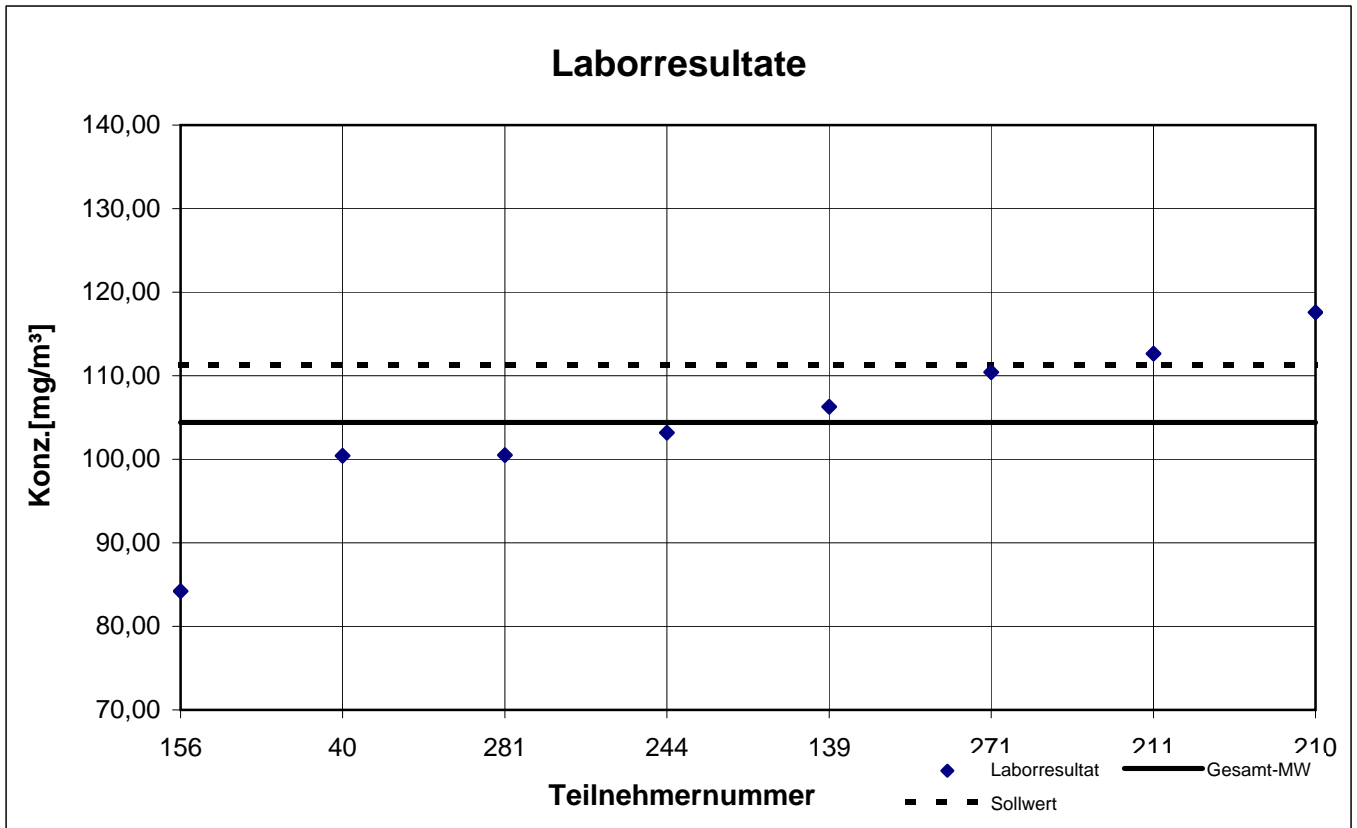
participant number	2-Butanon		4-Methyl-2-pentanone		Cyclohexanone		Cyclopentanone	
	result [mg/m ³]	z - score	result [mg/m ³]	z - score	result [mg/m ³]	z - score	result [mg/m ³]	z - score
40	100,4	0,4	33,90	1,0	38,97	3,1	102,8	0,8
75	k.A.	k.A.	37,08	0,2	k.A.	k.A.	k.A.	k.A.
139	106,3	0,2	37,37	0,1	26,37	1,1	93,77	0,1
156	84,20	1,9	36,10	0,4	28,10	0,6	92,20	0,3
210	117,6	1,3	45,37	2,0	36,30	2,2	105,0	1,1
211	112,6	0,8	35,74	0,5	24,84	1,6	87,51	0,8
244	103,2	0,1	39,63	0,5	28,43	0,4	88,97	0,6
271	110,4	0,6	37,14	0,2	25,15	1,5	94,94	0,0
281	100,5	0,4	k.A.	k.A.	k.A.	k.A.	k.A.	k.A.

marked fields are outliers!

	2-Butanon	4-Methyl-2-pentanone	Cyclohexanone	Cyclopentanone
mean c_k [mg / m ³]	104,4	37,79	29,74	95,04
standard deviation S_k [mg/m ³]	10,161	3,466	5,613	6,632
relative standard deviation [%]	9,73	9,17	18,88	6,98
"true result" [mg/m ³]	111,3	39,10	31,40	96,30

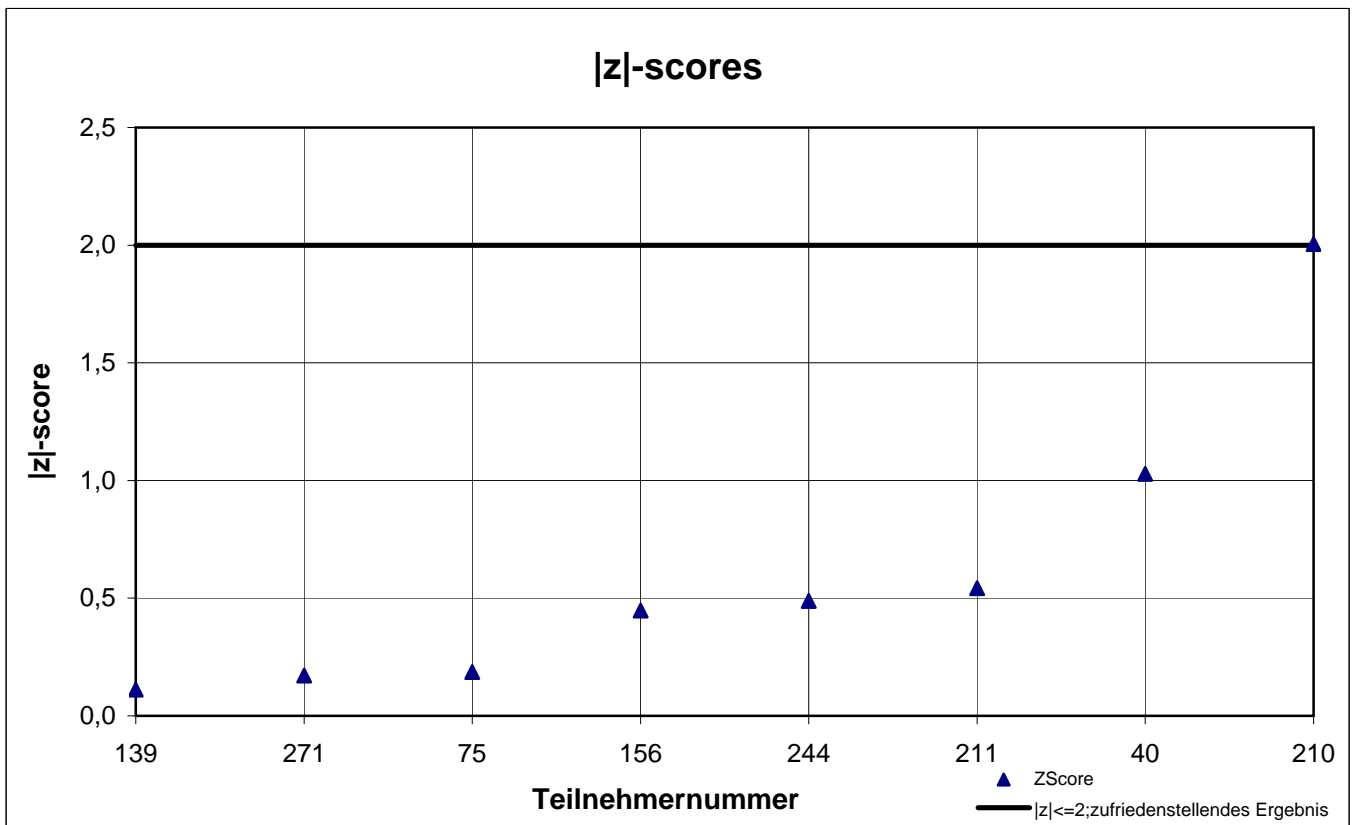
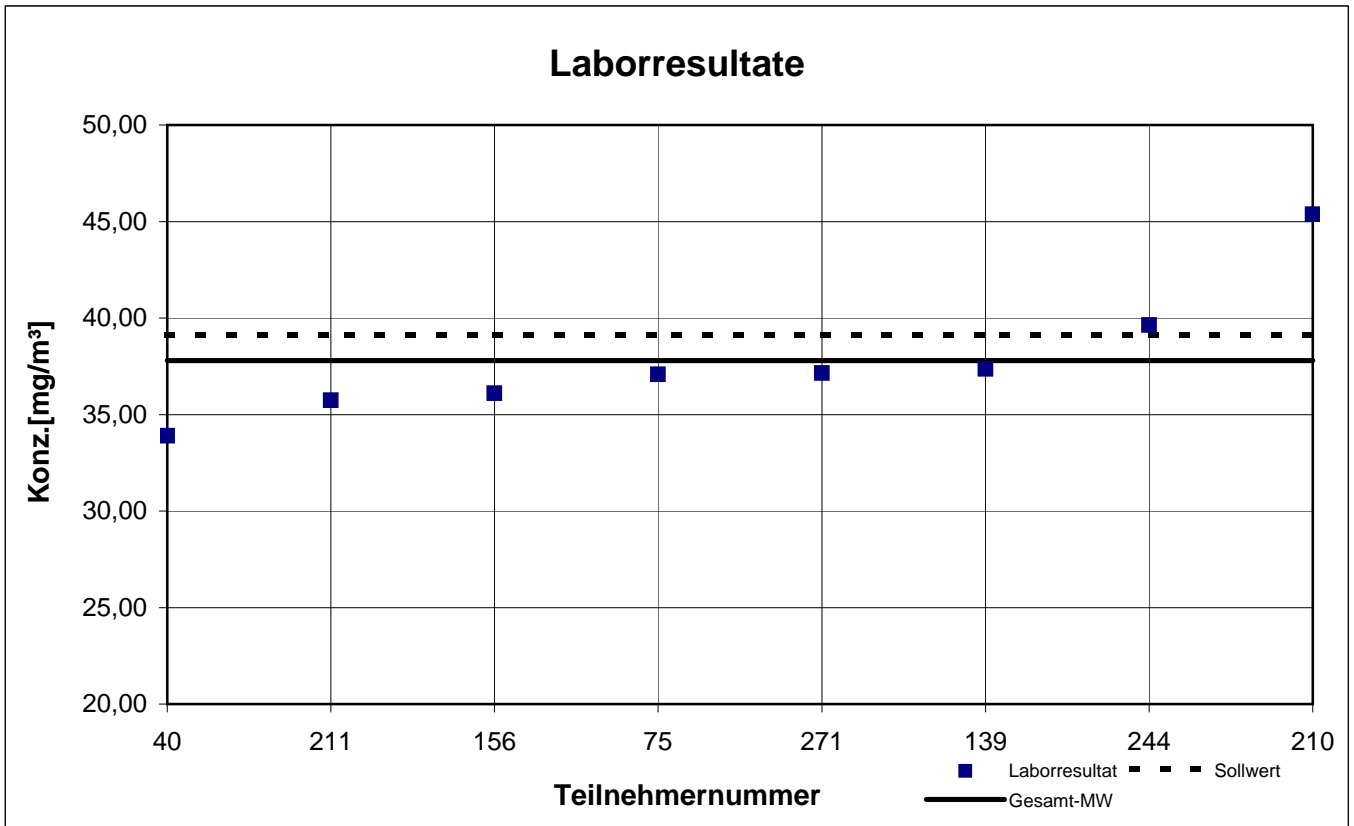
Probe 1

2-Butanon



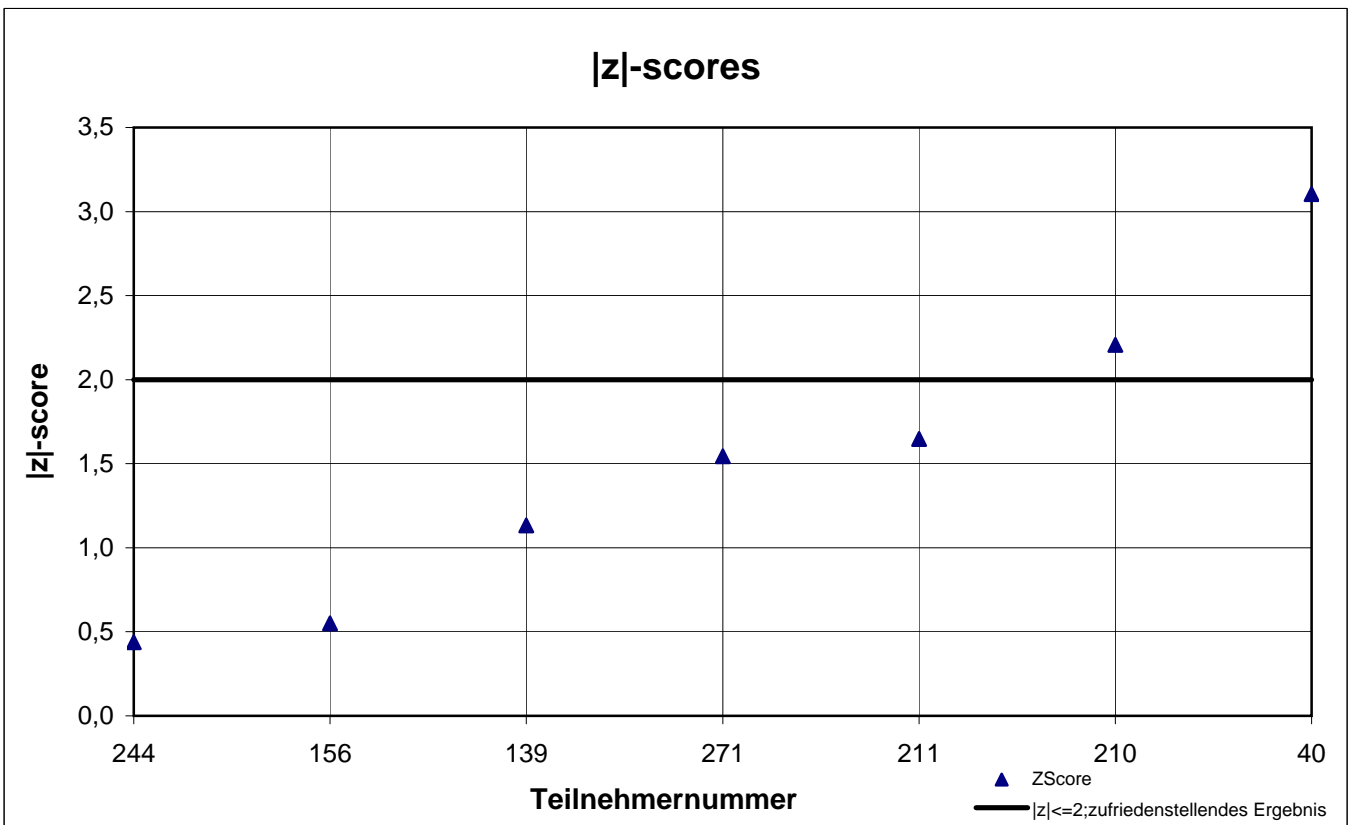
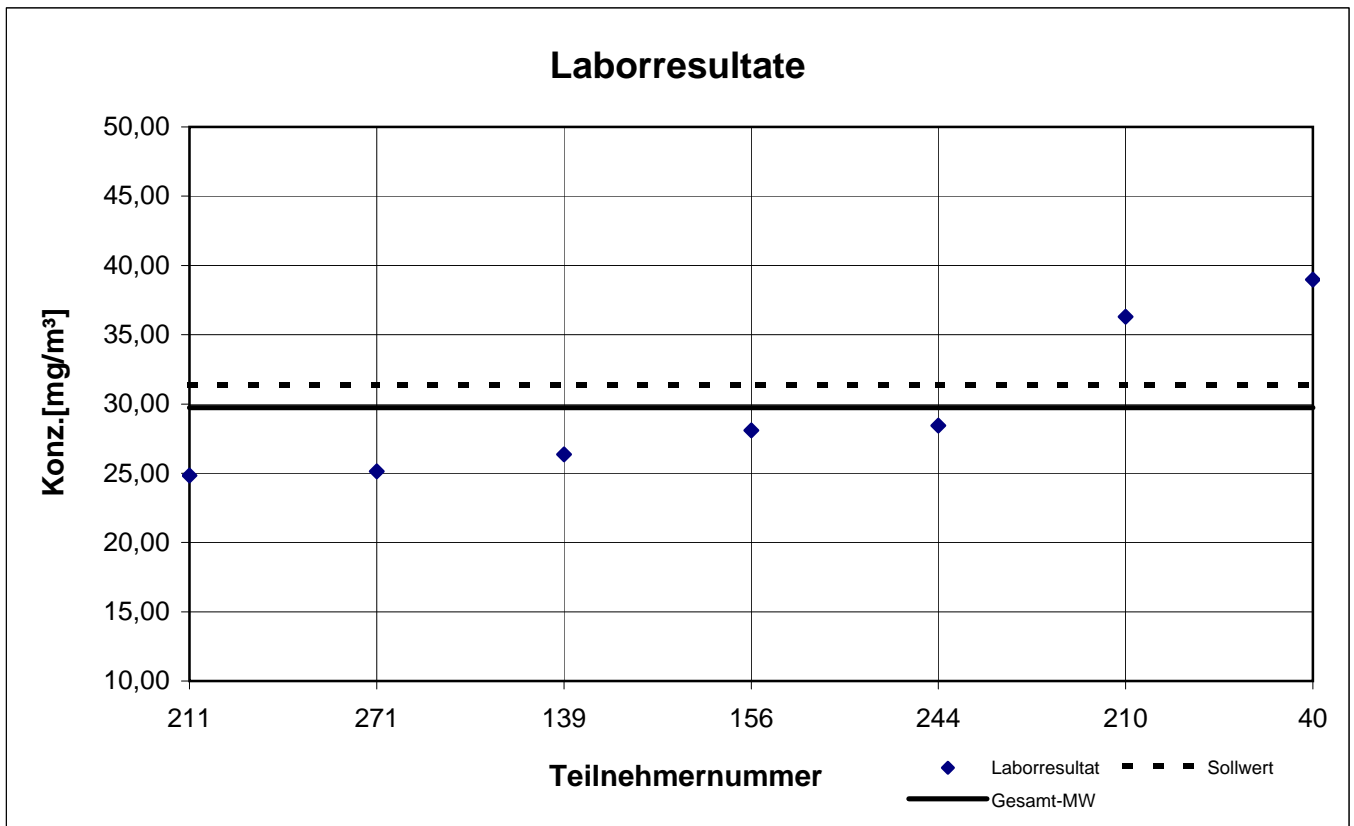
Probe 1

4-Methyl-2-pentanon



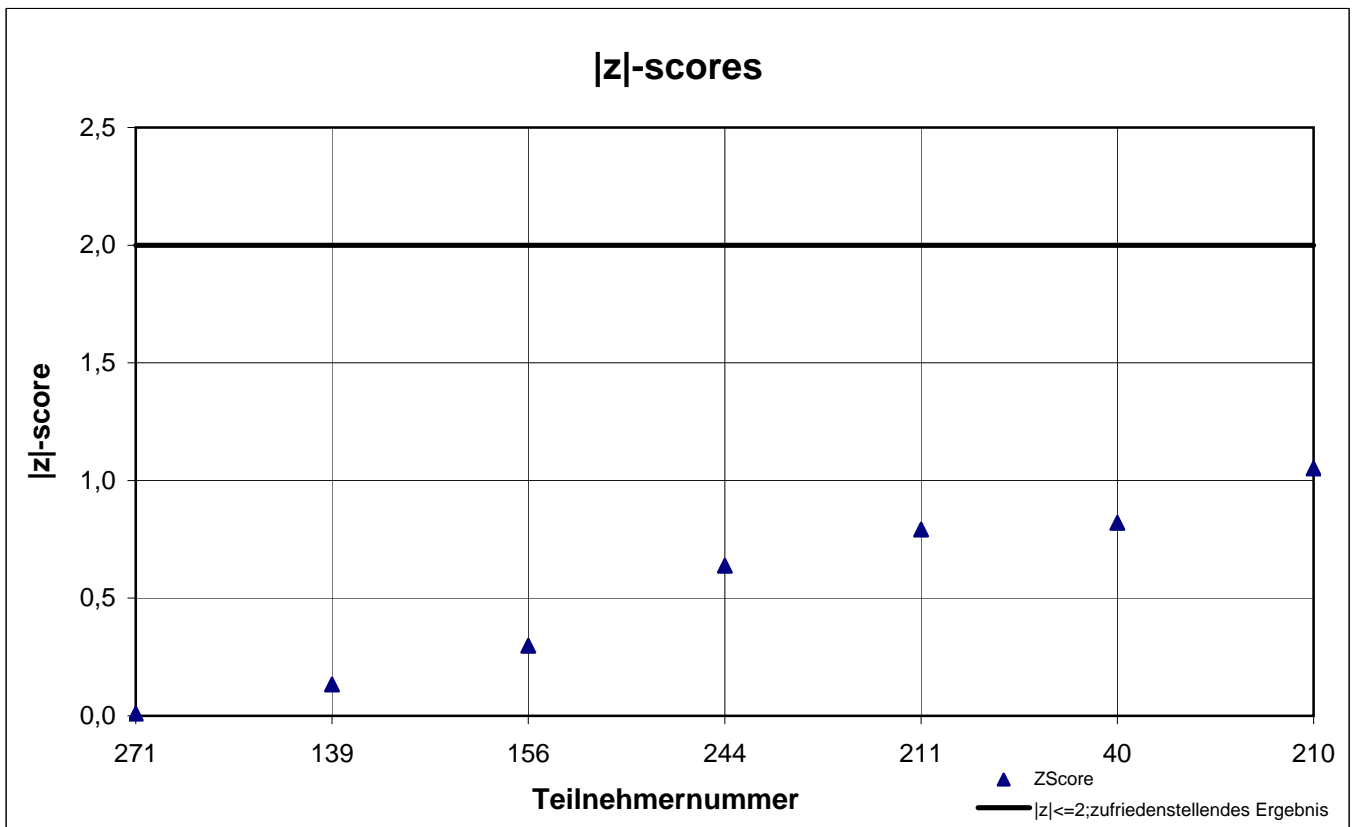
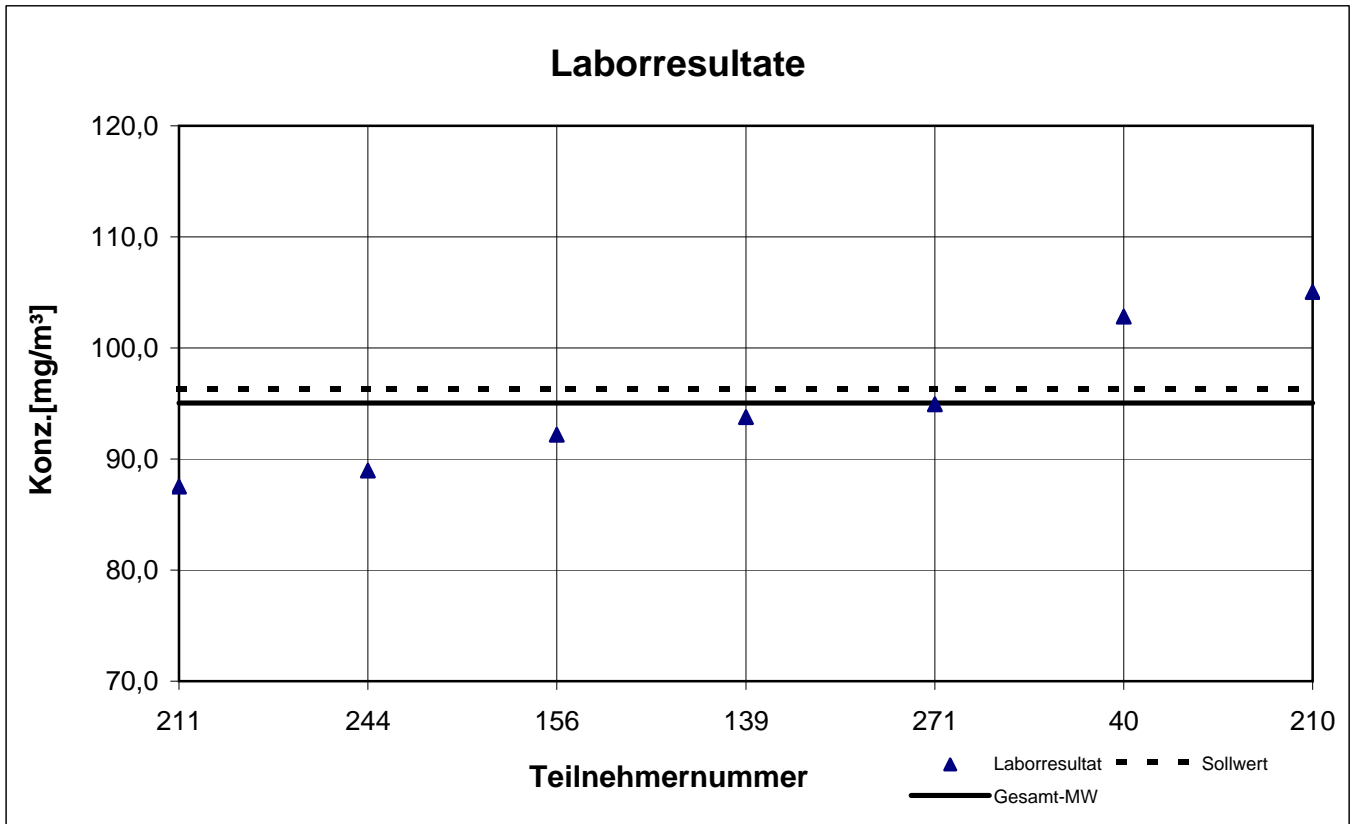
Probe 1

Cyclohexanon



Probe 1

Cyclopentanon



results sample 2

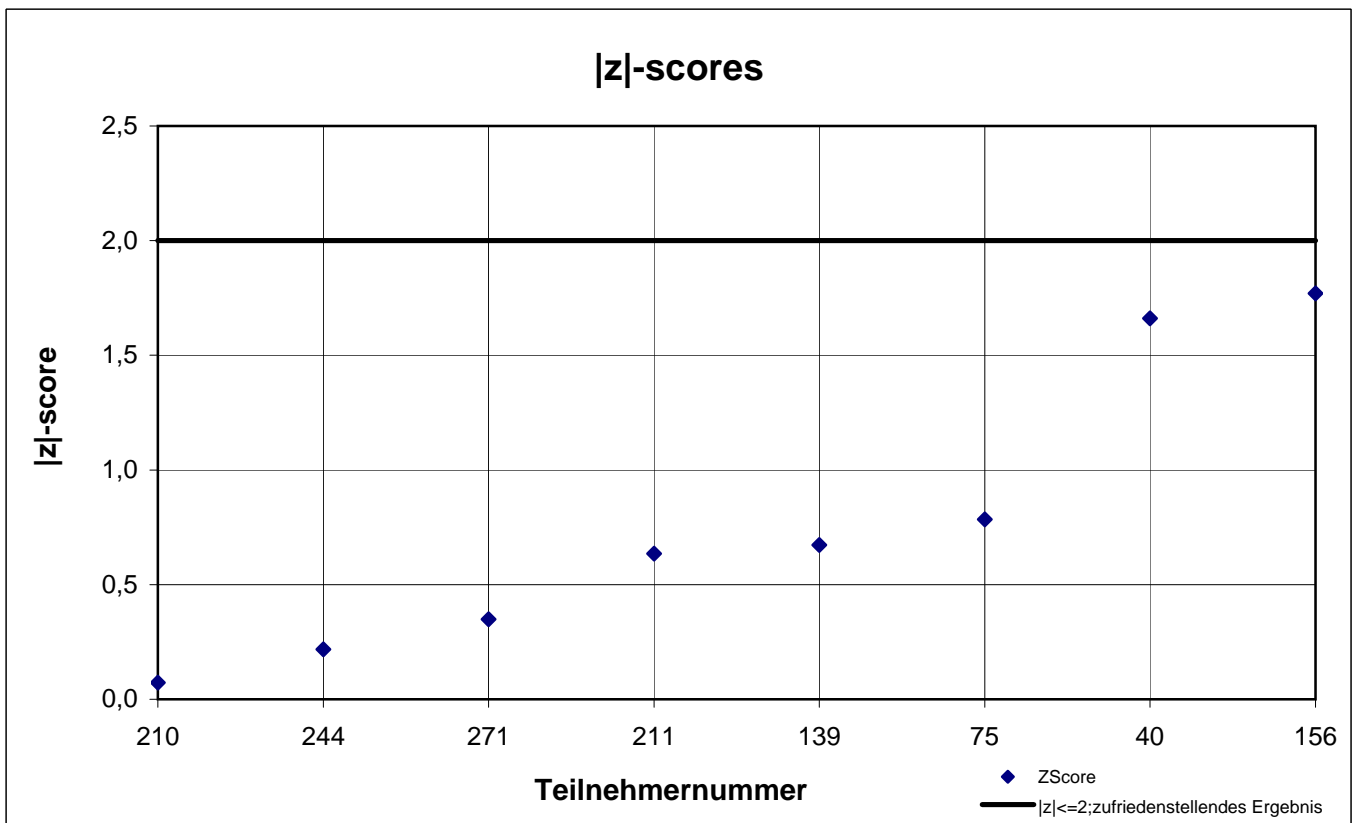
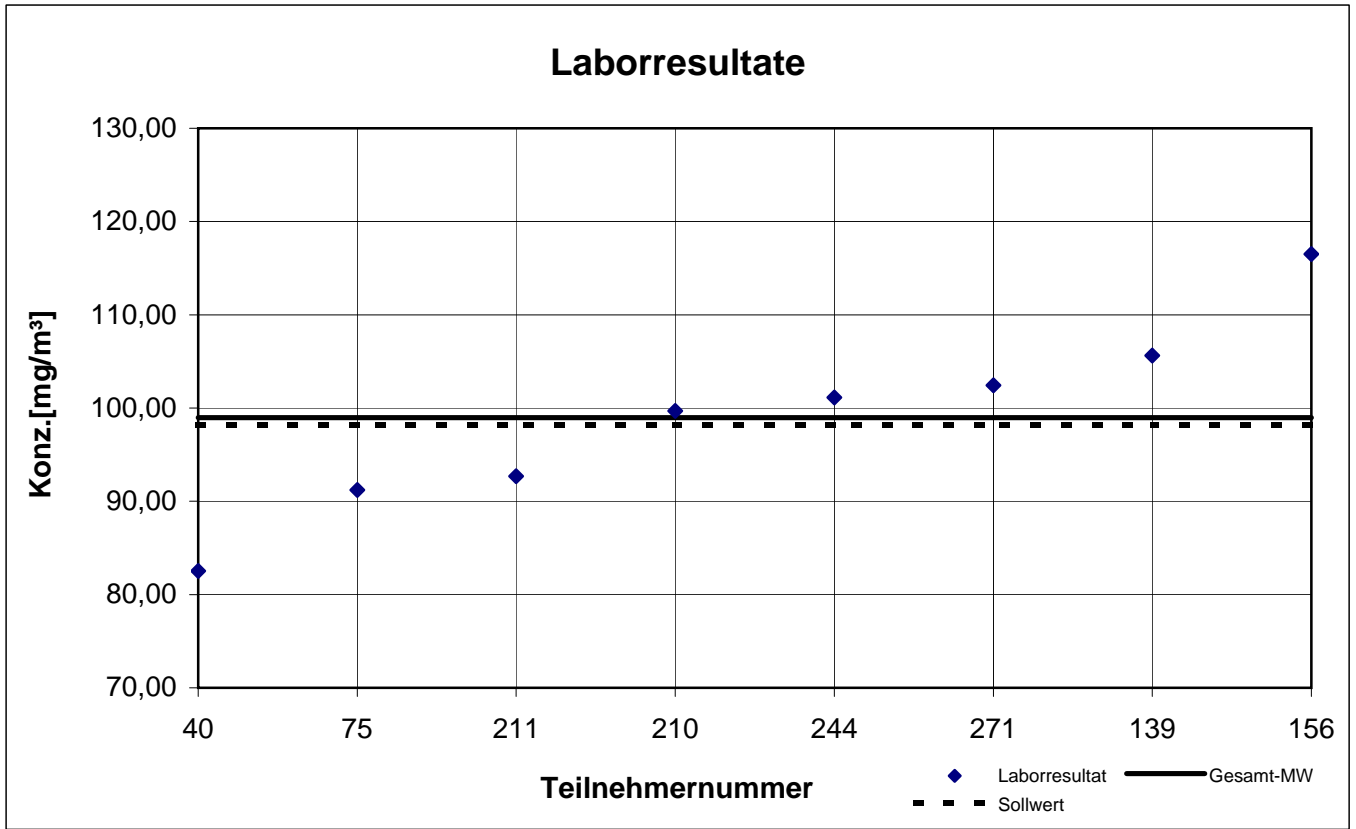
participant number	1-Butanol		Ethylbenzene		n-Butyl acetate		n-Hexane		p-Xylene		Toluene	
	result [mg/m ³]	z - score	result [mg/m ³]	z - score	result [mg/m ³]	z - score	result [mg/m ³]	z - score	result [mg/m ³]	z - score	result [mg/m ³]	z - score
40	82,53	1,7	94,13	0,4	75,90	0,3	75,43	0,2	67,07	0,7	65,33	0,3
75	91,21	0,8	90,46	0,0	74,98	0,1	73,35	0,4	61,94	0,1	66,83	0,1
139	105,6	0,7	101,4	1,2	100,0	3,5	78,87	0,3	72,90	1,6	74,30	1,0
156	116,50	1,8	103,0	1,4	126,0	7,0	88,15	1,5	65,90	0,5	72,15	0,7
210	99,70	0,1	80,70	1,1	73,33	0,1	73,60	0,4	58,30	0,7	59,70	1,2
211	92,69	0,6	72,15	2,0	65,29	1,2	70,13	0,9	51,63	1,8	60,14	1,1
244	101,1	0,2	90,83	0,1	74,10	0,0	76,97	0,0	64,17	0,2	70,57	0,4
271	102,4	0,3	88,54	0,2	80,23	0,8	77,48	0,1	62,84	0,0	68,70	0,2
281	k.A.	k.A.	90,70	0,1	k.A.	k.A.	k.A.	k.A.	61,10	0,3	71,40	0,5

 marked fields are outliers!

	1-Butanol	Ethylbenzene	n-Butylacetate	n-Hexane	p-Xylene	Toluene
mean c_k [mg / m ³]	98,98	90,21	73,97	76,75	62,87	67,68
standard deviation S_k [mg/m ³]	10,273	9,515	4,893	5,373	5,919	5,169
relative standard deviation [%]	10,38	10,55	6,62	7,00	9,41	7,64
"true result" [mg/m ³]	98,20	85,90	71,80	77,77	60,10	64,70

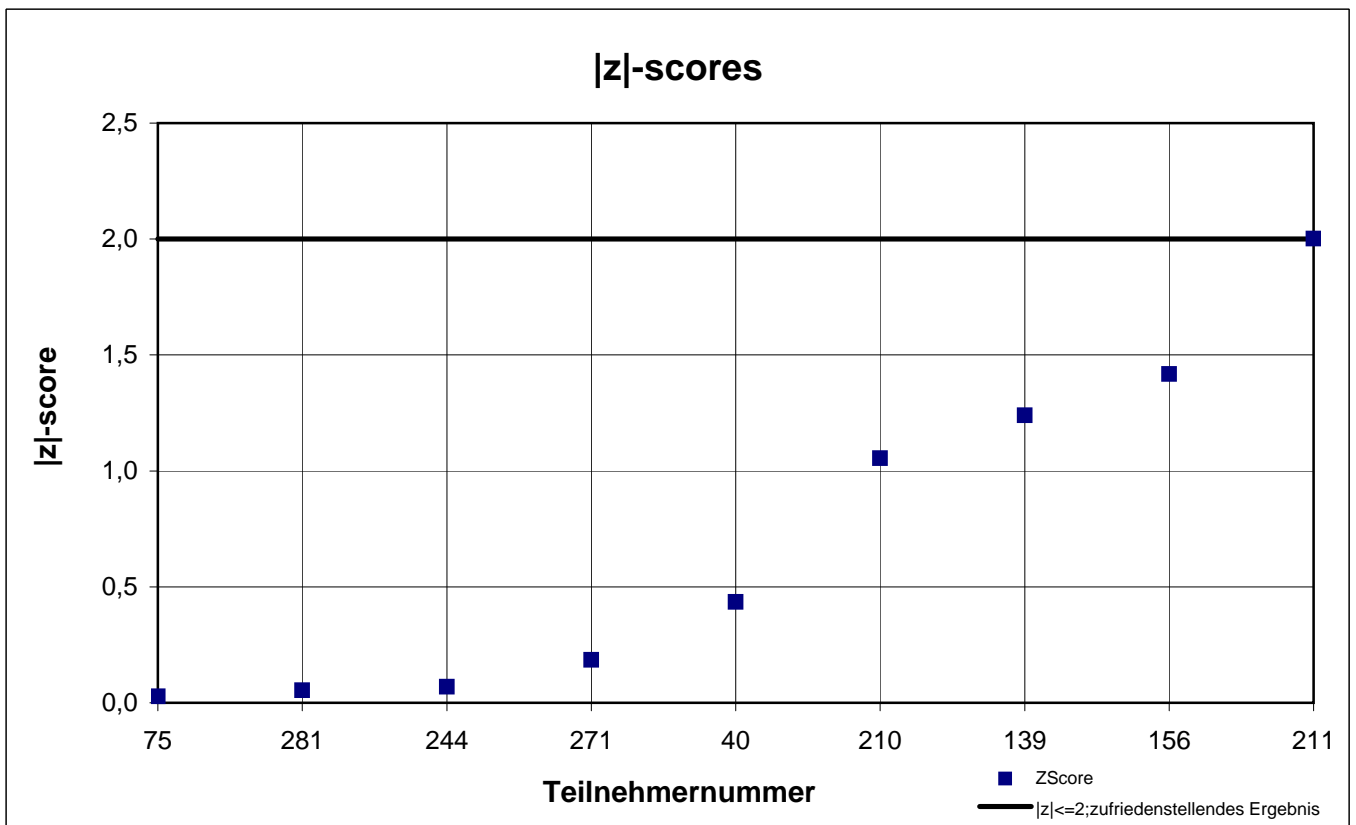
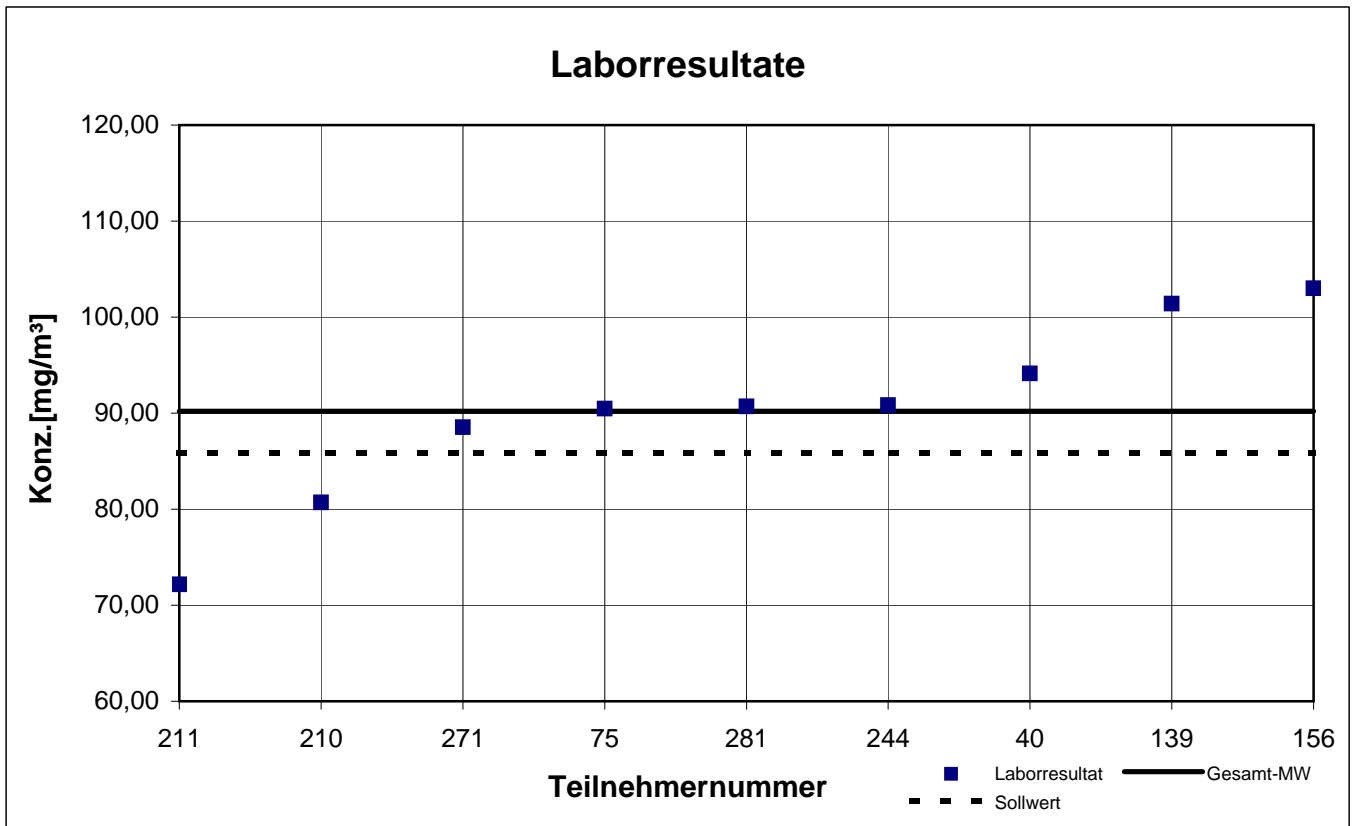
Probe 2

1-Butanol



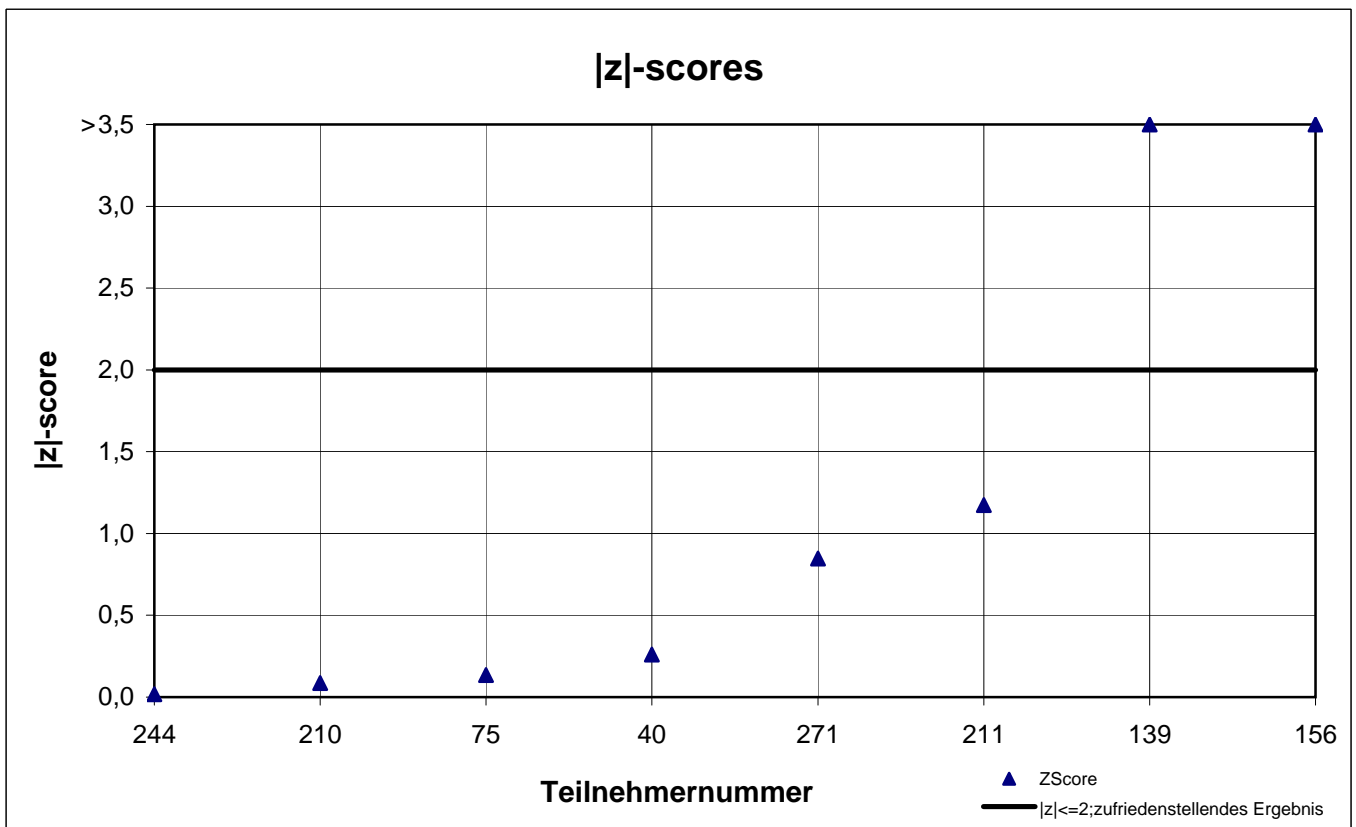
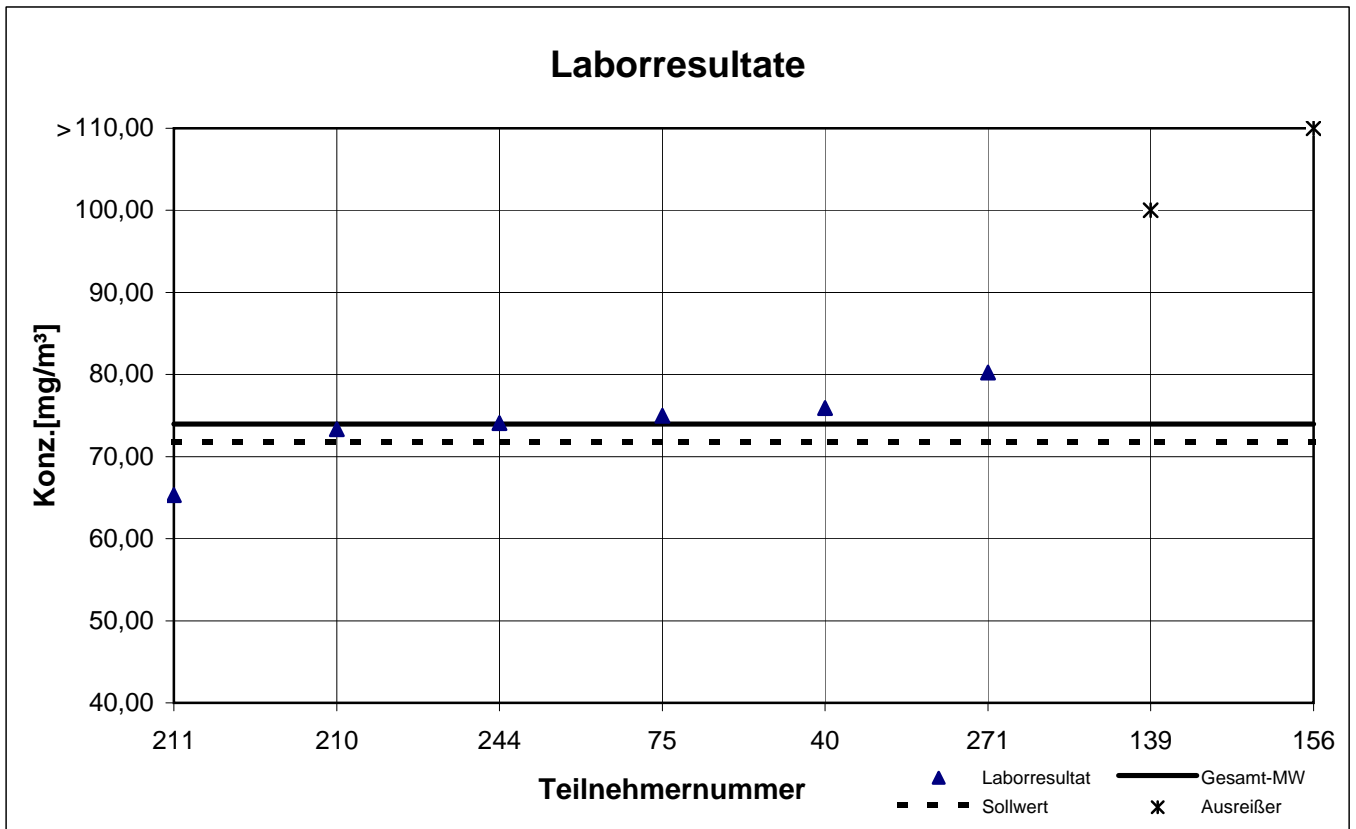
Probe 2

Ethylbenzol



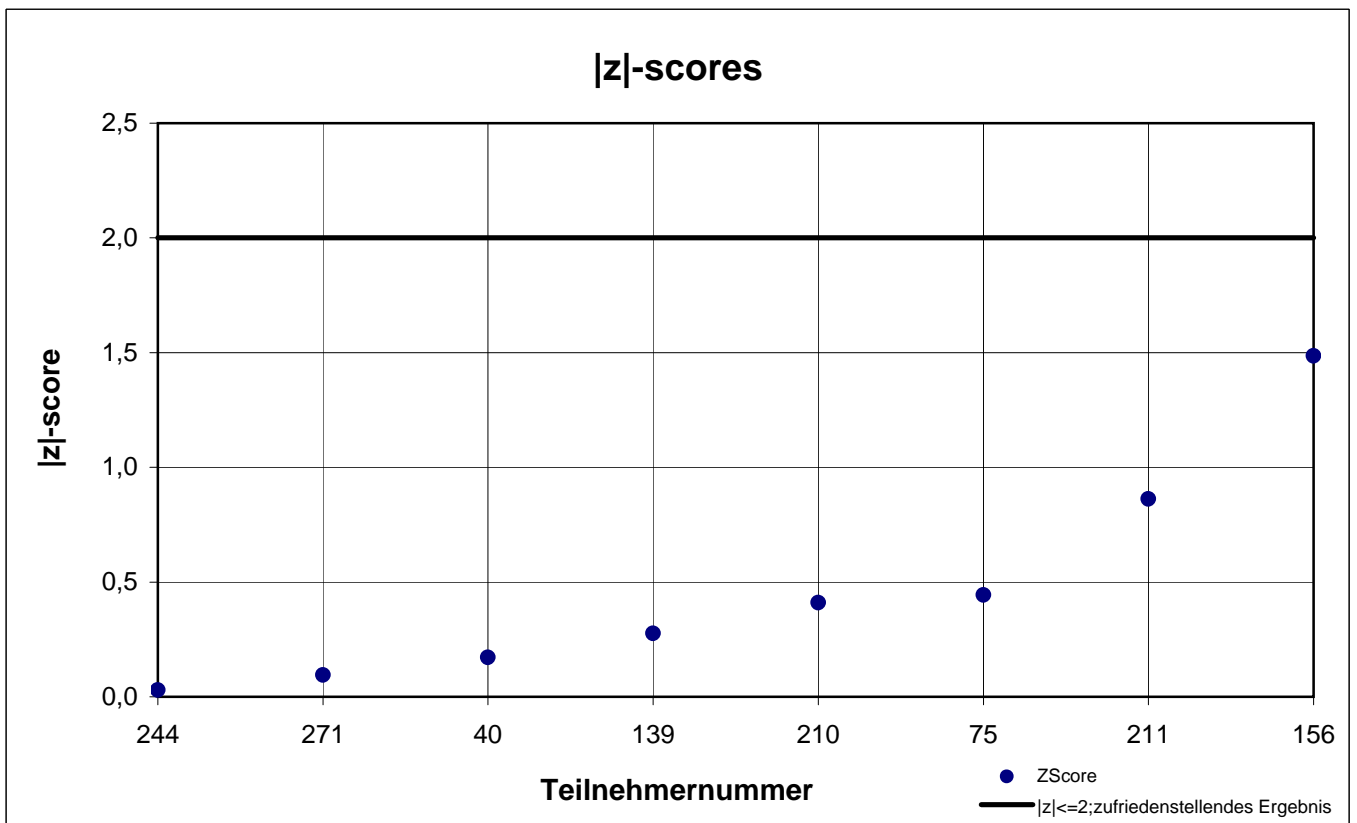
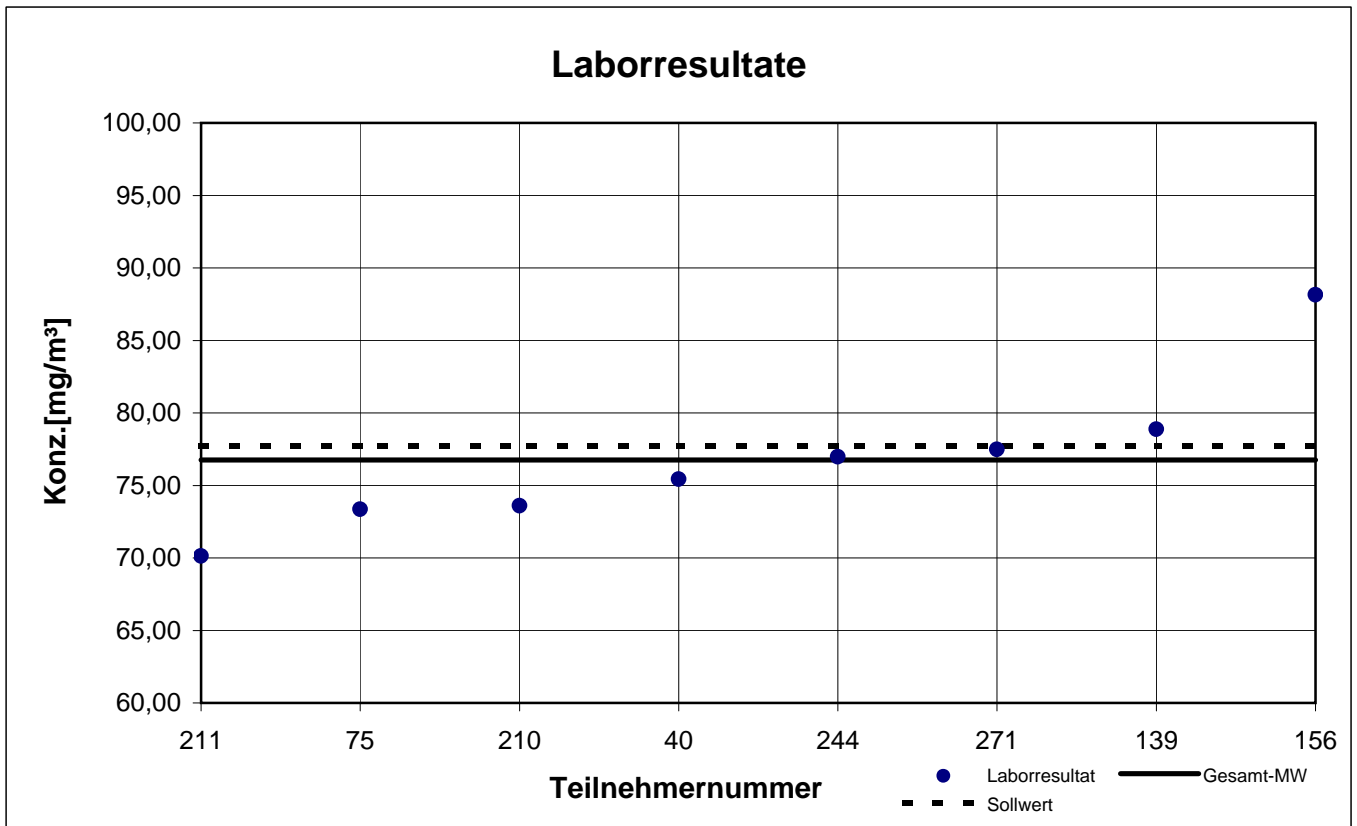
Probe 2

n-Butylacetat



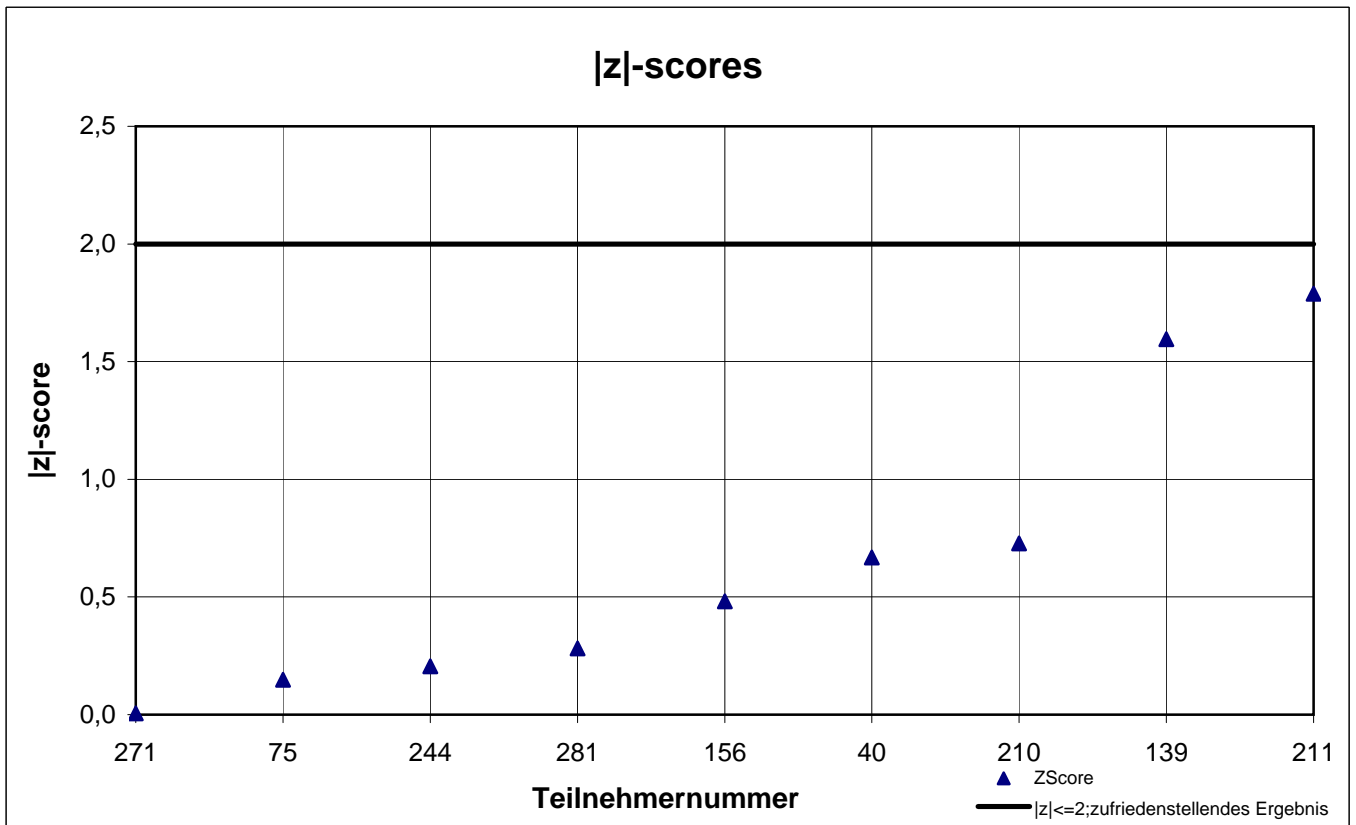
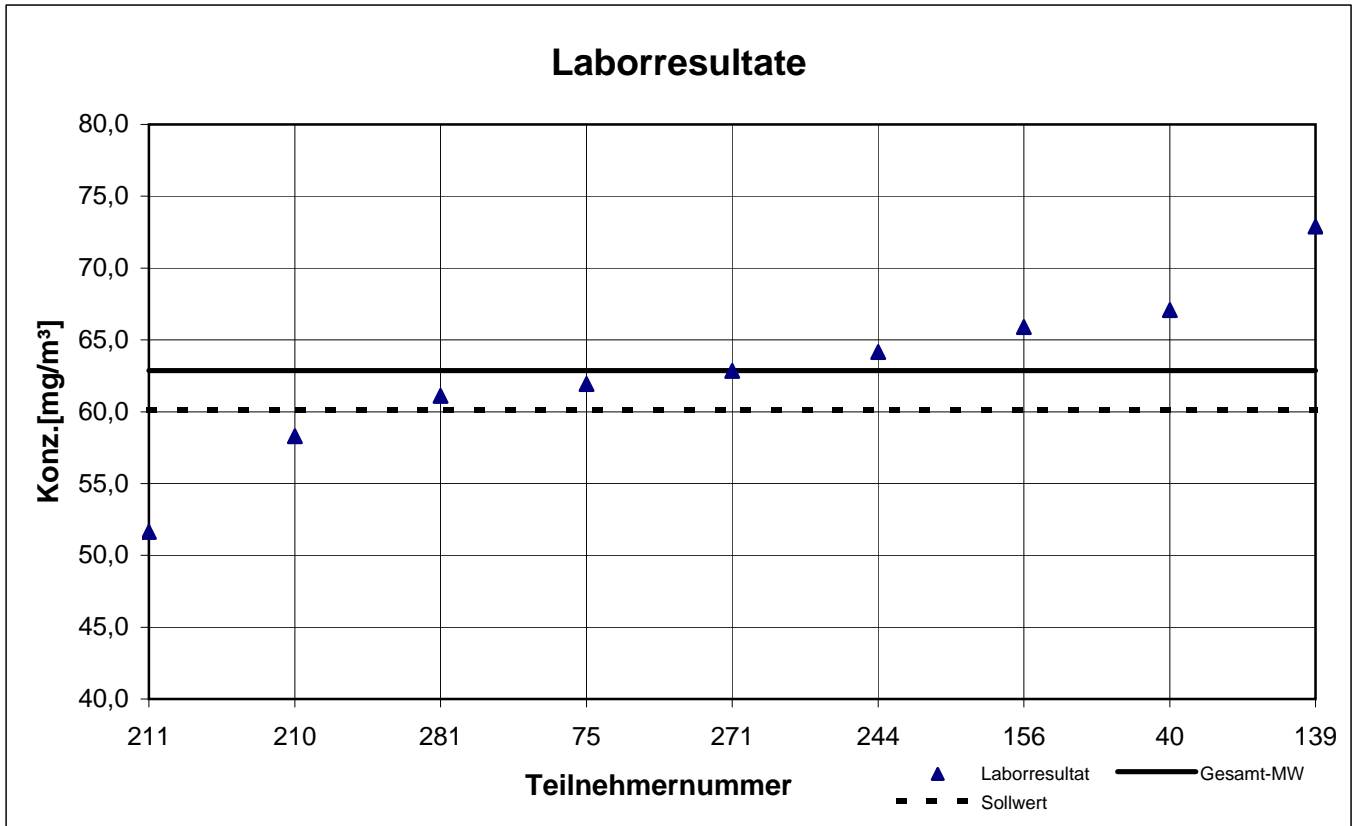
Probe 2

n-Hexan



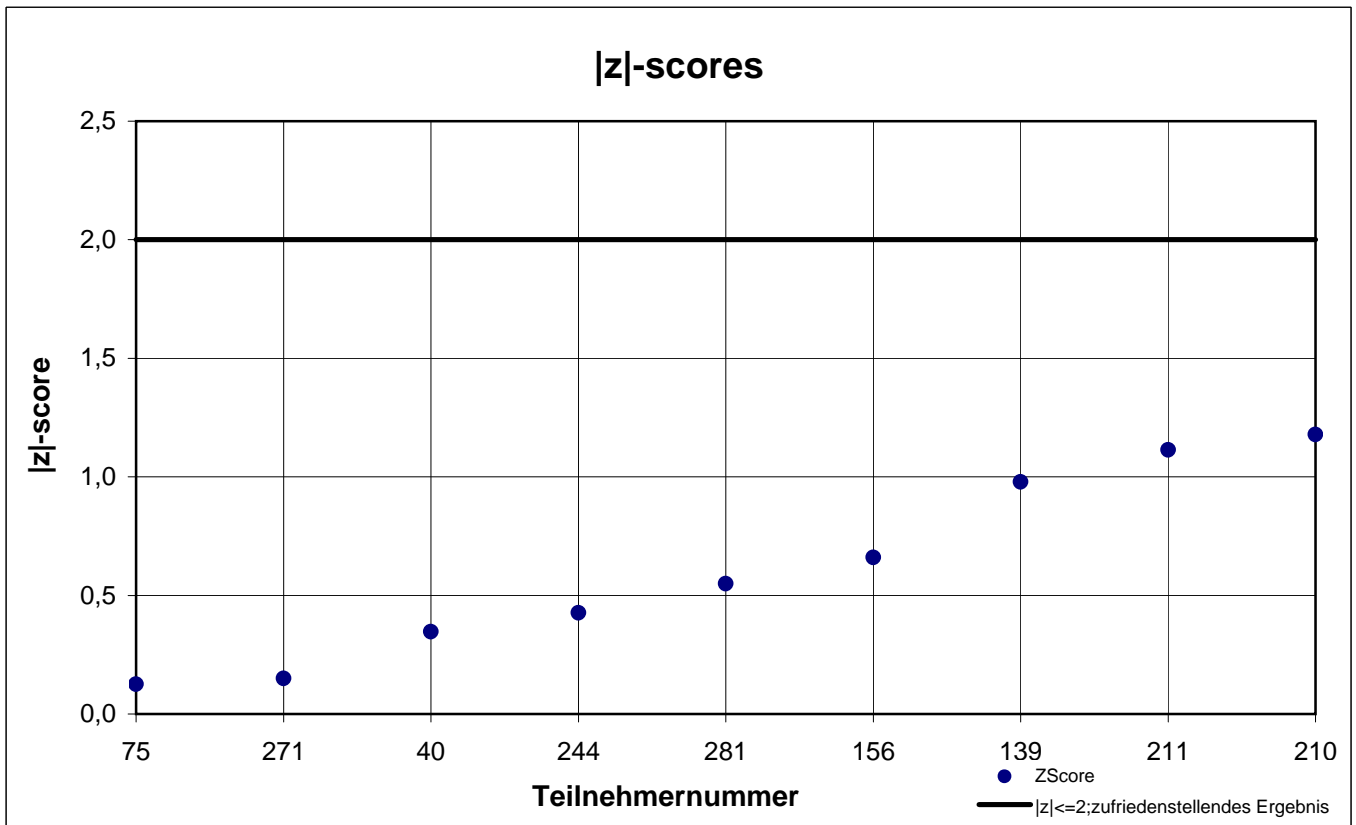
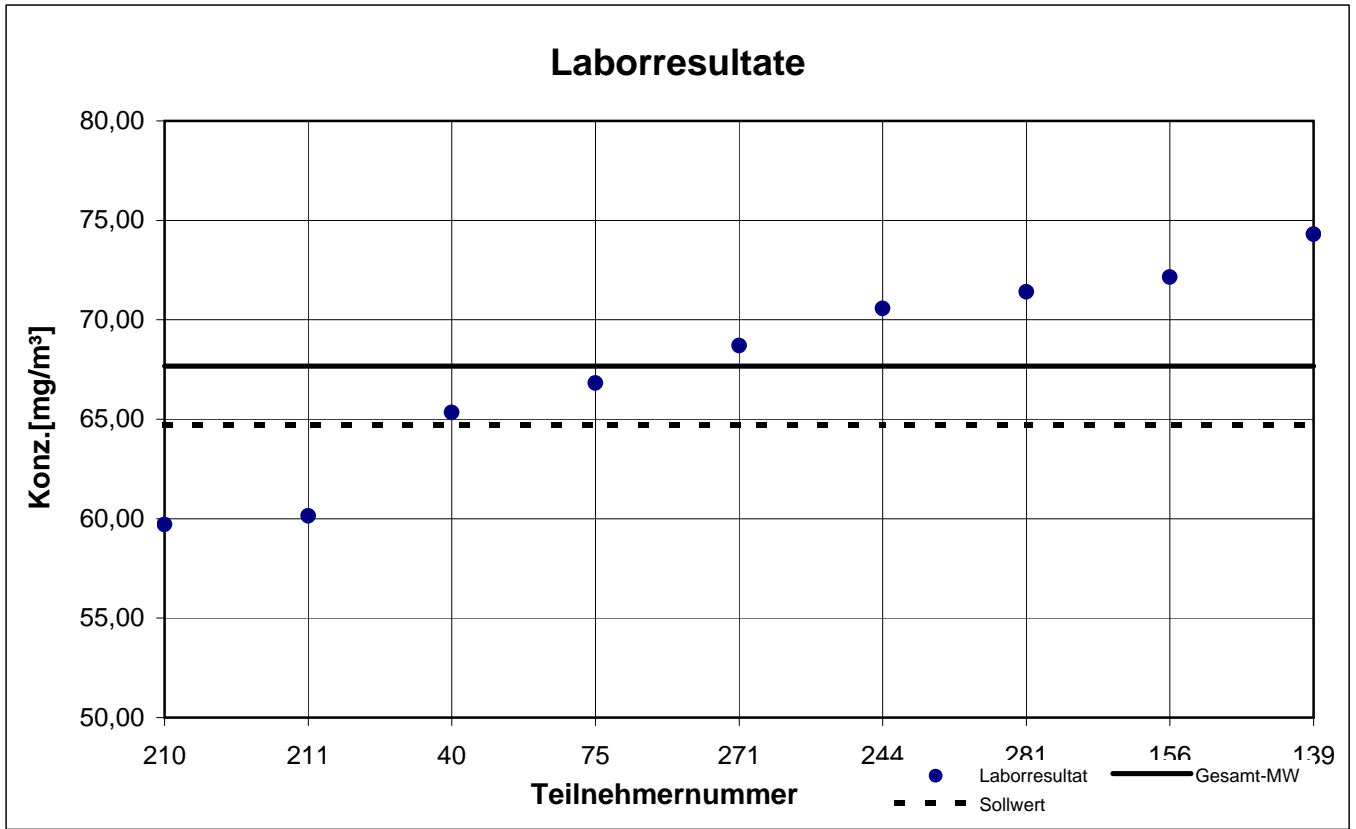
Probe 2

p-Xylol



Probe 2

Toluol



results sample 3

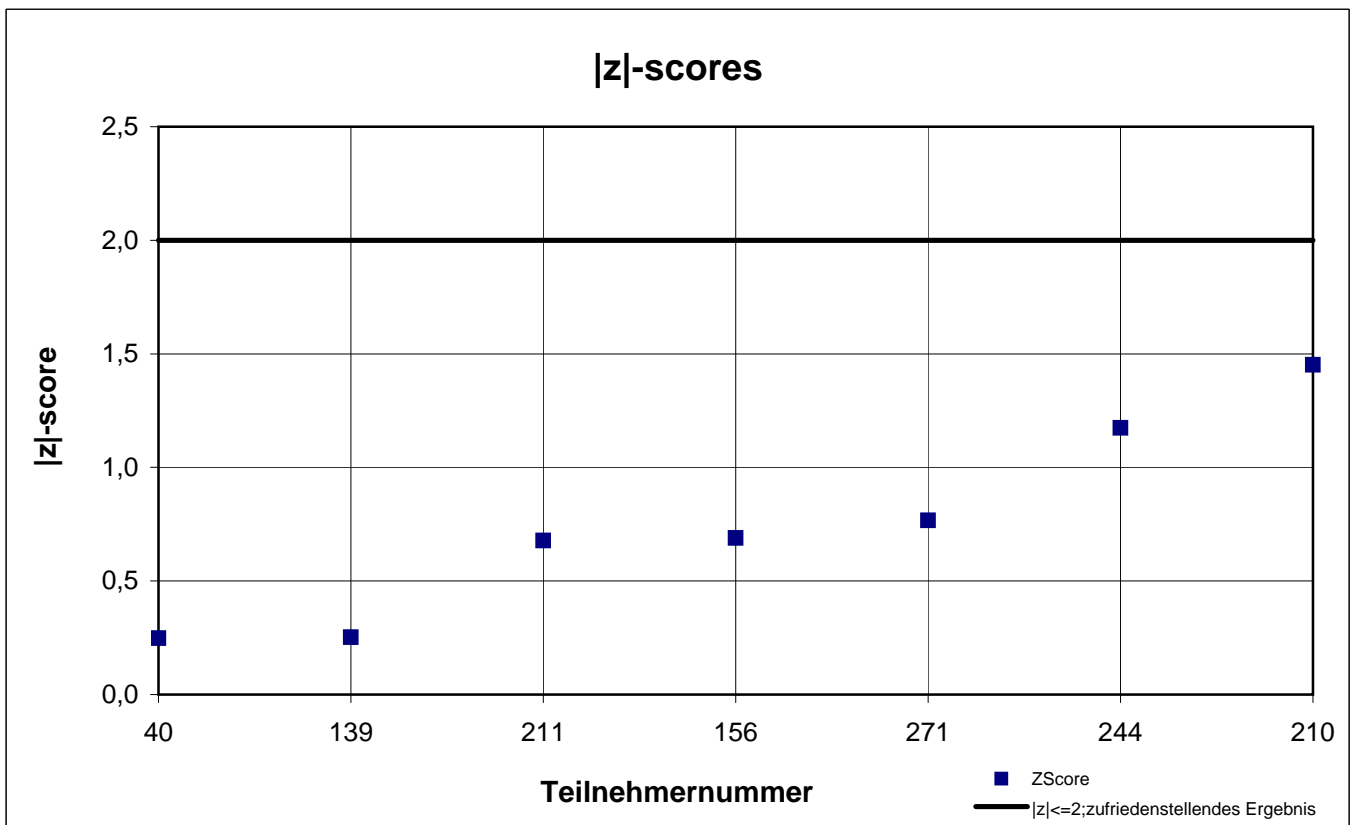
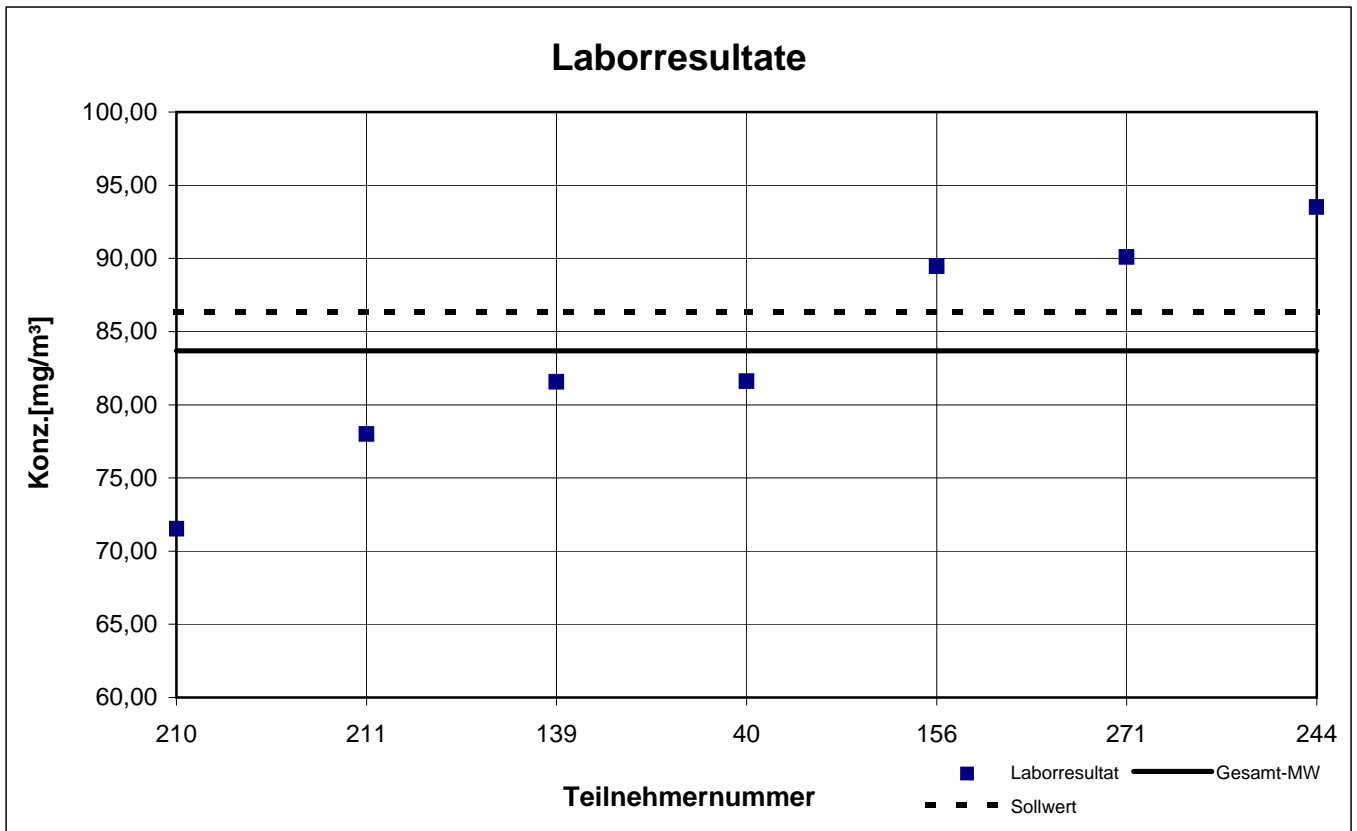
participant number	1-Methoxy-2-propanol		2-Butanol		2-Butoxyethanol		Ethanol	
	result [mg/m ³]	z - score	result [mg/m ³]	z - score	result [mg/m ³]	z - score	result [mg/m ³]	z - score
40	81,60	0,2	34,43	2,5	34,43	0,0	118,6	0,5
75	k.A.	k.A.	k.A.	k.A.	k.A.	k.A.	103,0	0,9
139	81,57	0,3	44,60	0,2	36,63	0,7	116,1	0,3
156	89,45	0,7	53,05	1,6	36,40	0,6	114,5	0,2
210	71,53	1,5	49,60	0,9	24,17	3,0	106,2	0,6
211	78,00	0,7	43,12	0,6	27,12	2,1	107,1	0,5
244	93,50	1,2	47,30	0,4	43,00	2,5	116,1	0,3
271	90,10	0,8	47,72	0,4	38,29	1,2	119,9	0,6
281	k.A.	k.A.	k.A.	k.A.	k.A.	k.A.	k.A.	k.A.

 marked fields are outliers!

	1-Methoxy-2-propanol	2-Butanol	2-Butoxy-ethanol	Ethanol
mean c_k [mg / m ³]	83,68	45,69	34,29	112,7
standard deviation S_k [mg/m ³]	7,741	5,926	6,528	6,327
relative standard deviation [%]	9,25	12,97	19,04	5,61
"true result" [mg/m ³]	86,30	44,70	32,10	110,3

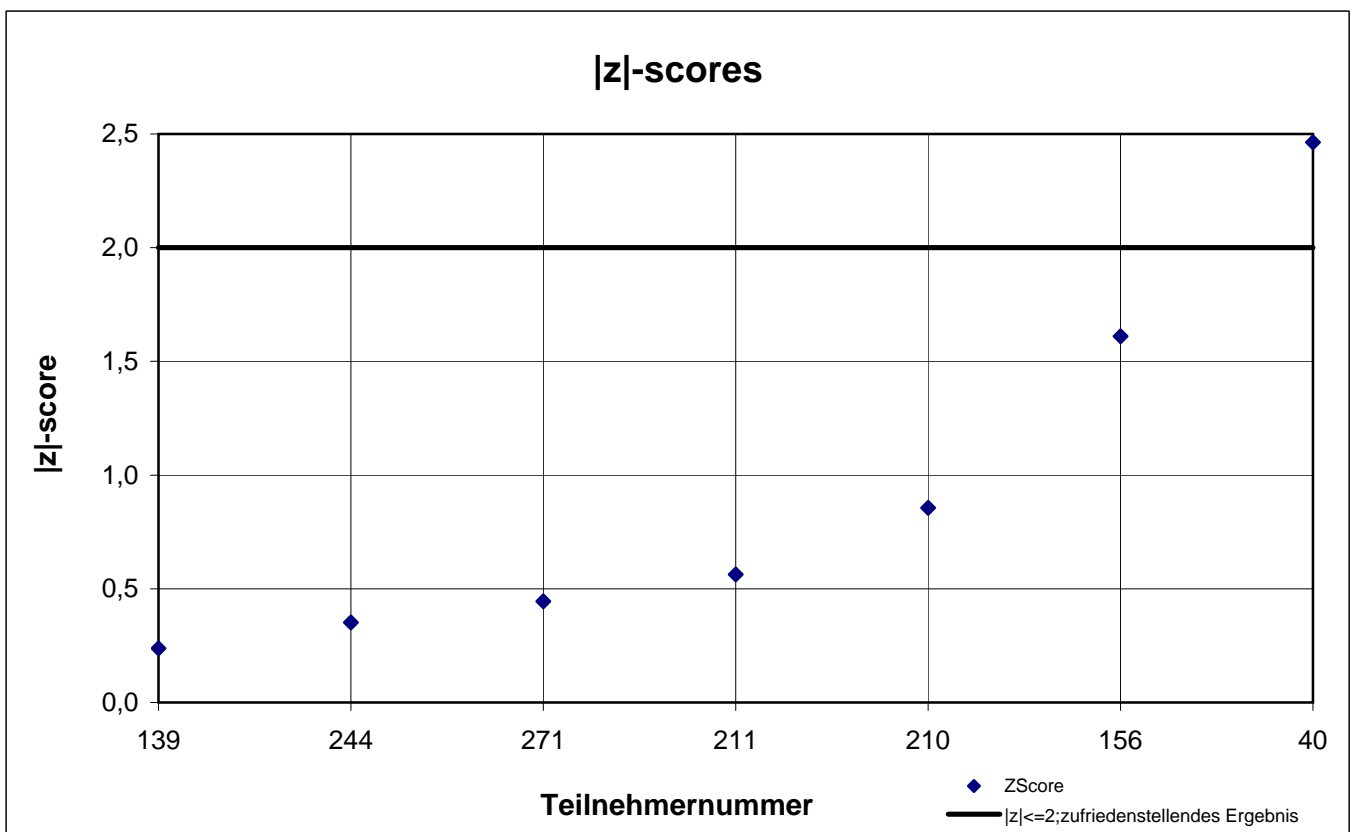
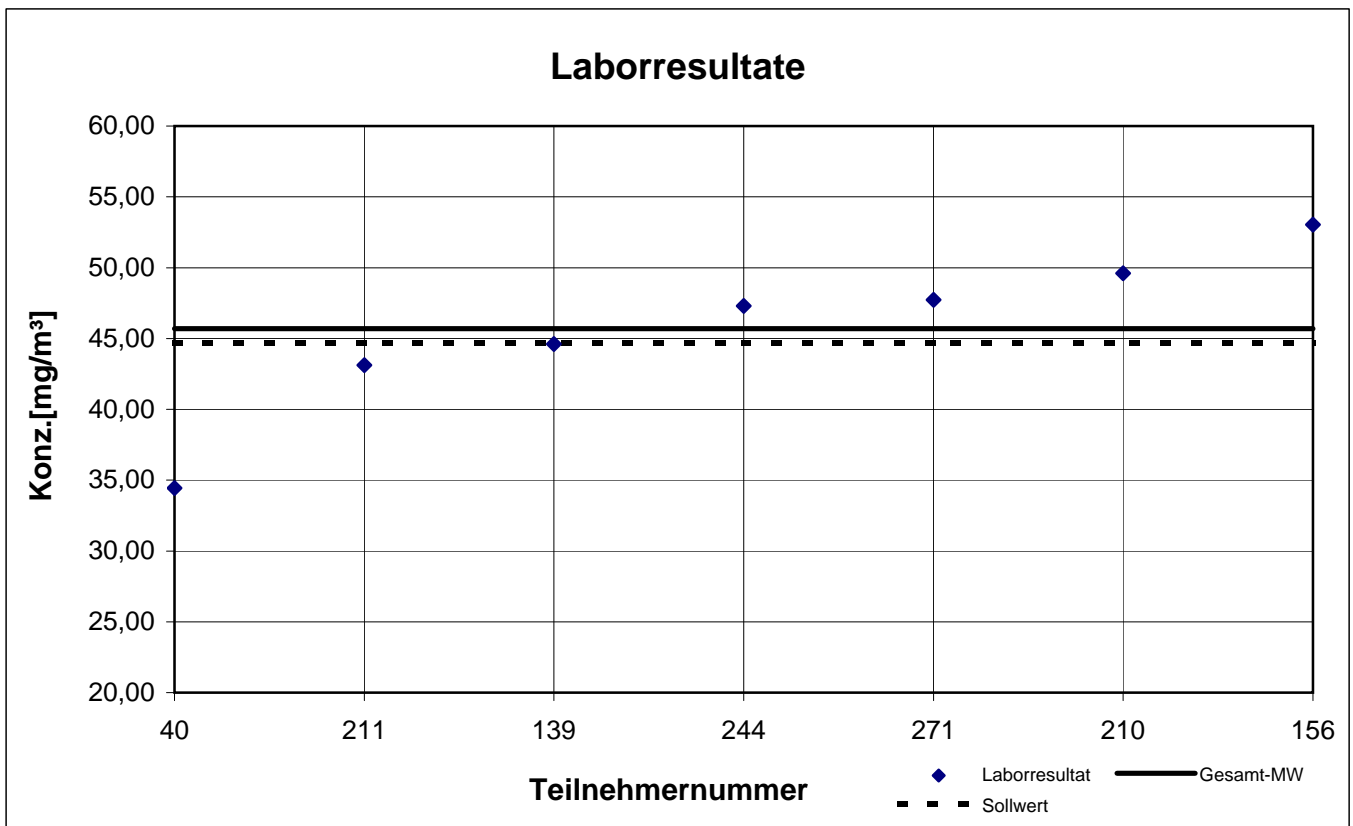
Probe 3

1-Methoxy-2-propanol



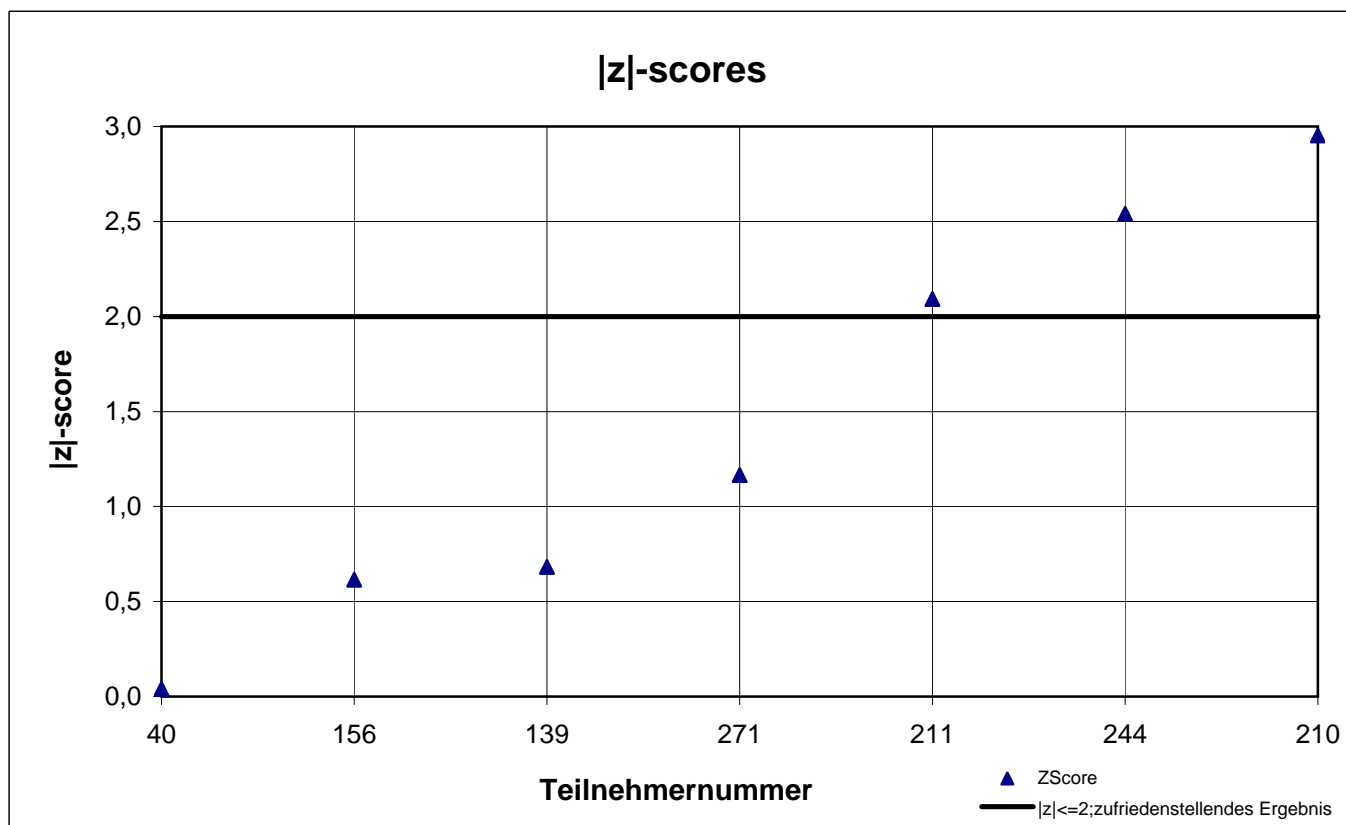
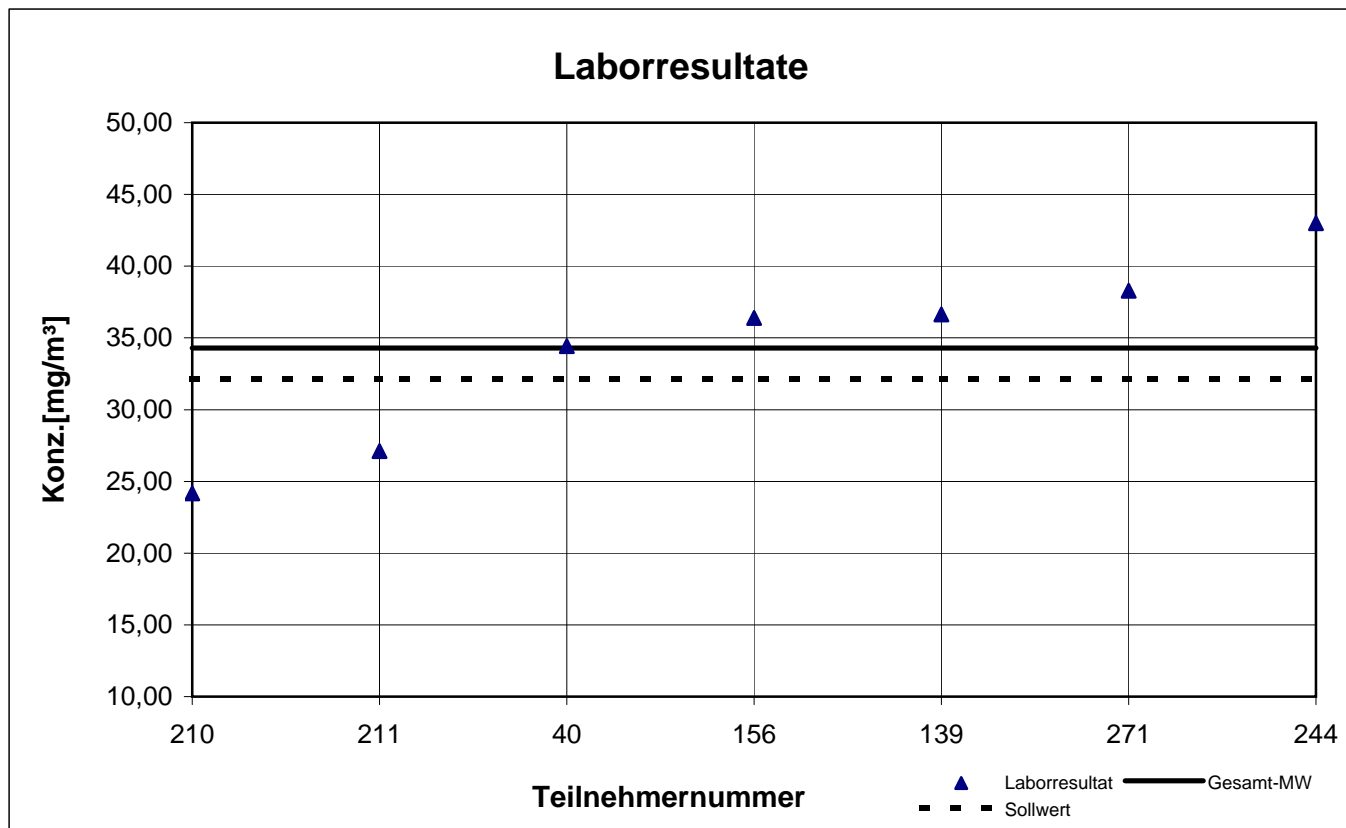
Probe 3

2-Butanol



Probe 3

2-Butoxyethanol



Probe 3

Ethanol

