

Probe 1 - Gesamtauswertung (Teil 1)

Teilnehmer- nummer	1,2,3-Trimethylbenzol		2-Butoxyethanol		2-Phenoxyethanol		Dodecan		Ethylacetat	
	Labor- resultat ($\mu\text{g} / \text{m}^3$)	z - score	Labor- resultat ($\mu\text{g} / \text{m}^3$)	z - score	Labor- resultat ($\mu\text{g} / \text{m}^3$)	z - score	Labor- resultat ($\mu\text{g} / \text{m}^3$)	z - score	Labor- resultat ($\mu\text{g} / \text{m}^3$)	z - score
5	17,91	0,5	17,39	1,5	8,80	1,7	56,72		18,05	0,7
34	15,85	1,6	69,60	24,1	101,3	85,1	74,35		28,25	6,7
40	19,70	0,5	19,40	0,5	9,10	1,5	57,90		19,40	1,5
46	21,40	1,4	20,60	0,1	10,90	0,2	58,60		17,00	0,1
117	19,00	0,1	19,00	0,7	12,00	1,3	177,0		14,00	1,7
135	17,85	0,5	21,65	0,6	10,70	0,0	70,35		11,80	3,0
152	20,50	0,9	10,30	5,0	11,00	0,3	62,00		15,30	0,9
158	16,50	1,2	17,80	1,3	10,50	0,1	51,50		15,90	0,6
166	21,00	1,2	27,00	3,2	15,00	4,1	62,00		19,00	1,3
184	19,56	0,4	17,01	1,7	7,400	3,1	56,20		18,13	0,7
213	20,69	1,0	21,67	0,6	10,78	0,1	64,18		18,21	0,8
230	17,00	0,9	24,00	1,8	14,00	3,1	48,00		18,75	1,1
267	17,00	0,9	19,00	0,7	12,00	1,3	50,00		17,00	0,1

Die mit gekennzeichneten Felder sind Ausreißer!

	1,2,3- Trimethyl- benzol	2-Butoxy- ethanol	2-Phenoxy- ethanol	Dodecan	Ethylacetat
Gesamtmittelwert c_k [$\mu\text{g} / \text{m}^3$]	18,77	20,41	10,65		16,88
Standardabweichung S_k [$\mu\text{g} / \text{m}^3$]	1,863	3,033	1,775		2,269
rel. Standardabweichung [%]	9,93	14,86	16,55		13,44
Mittelwert aus QS [$\mu\text{g} / \text{m}^3$]	18,10	18,00	12,10		15,60

Probe 1 - Gesamtauswertung (Teil 2)

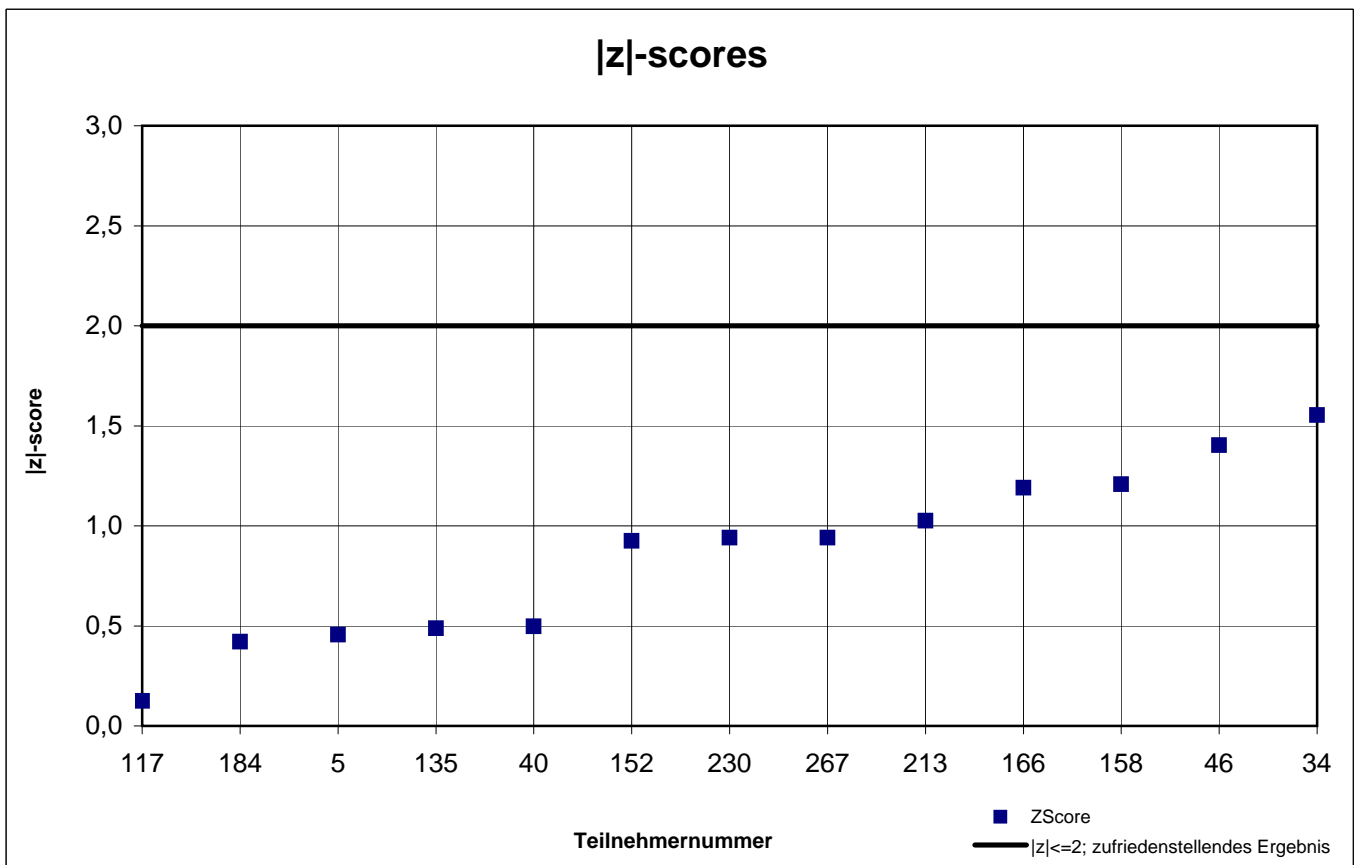
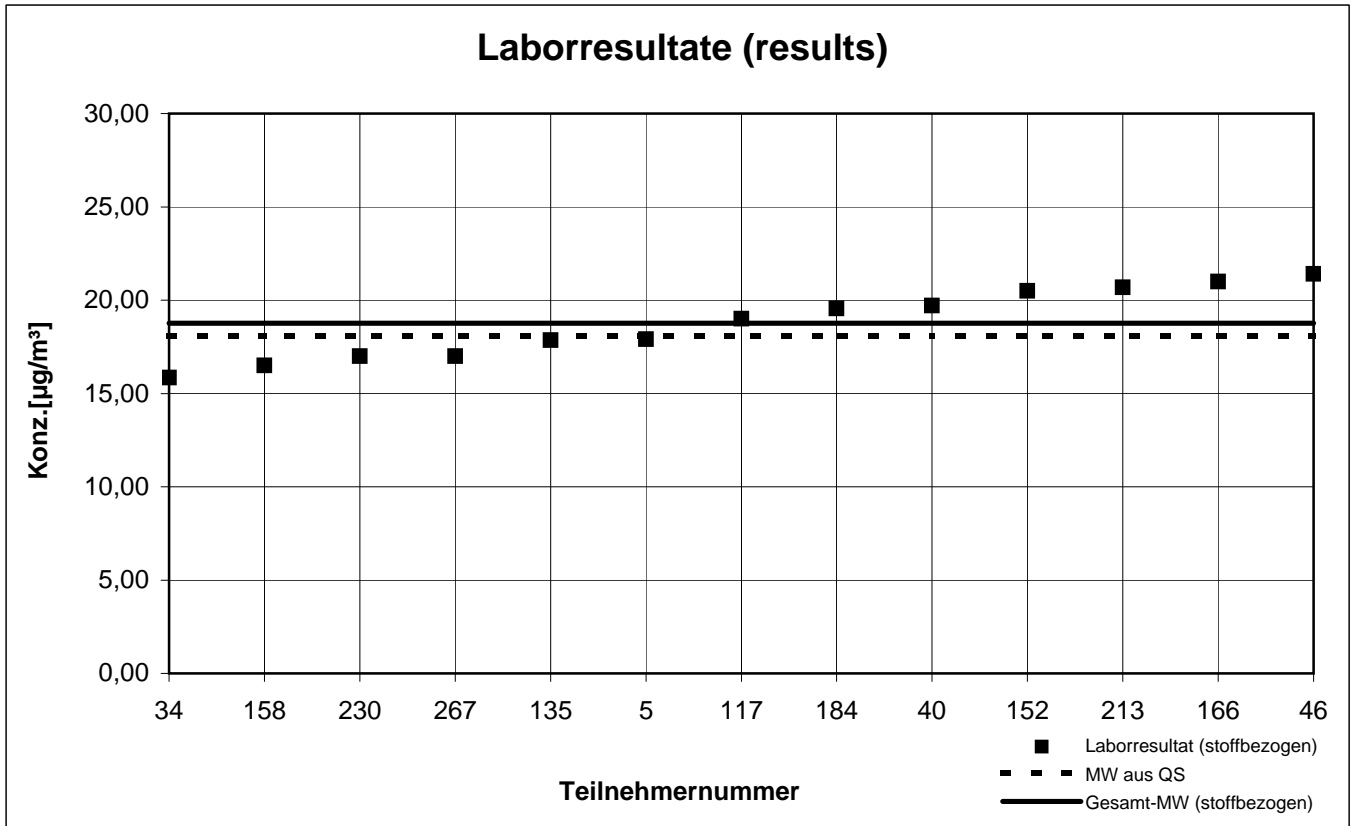
Teilnehmer- nummer	n-Heptan		Octamethylcyclo- tetrasiloxan		p-Xylol		R(+)-Limonen		Toluol	
	Labor- resultat ($\mu\text{g} / \text{m}^3$)	z - score	Labor- resultat ($\mu\text{g} / \text{m}^3$)	z - score	Labor- resultat ($\mu\text{g} / \text{m}^3$)	z - score	Labor- resultat ($\mu\text{g} / \text{m}^3$)	z - score	Labor- resultat ($\mu\text{g} / \text{m}^3$)	z - score
5	18,19	0,3	152,2		15,32	0,3	47,05		18,90	0,4
34	19,65	0,5	85,85		23,90	5,1	97,20		24,40	2,3
40	19,20	0,3	103,4		15,90	0,1	43,70		20,10	0,2
46	20,20	0,8	82,20		17,60	1,1	53,50		20,30	0,3
117	22,00	1,8	314,0		17,00	0,8	58,00		21,00	0,6
135	15,10	1,9	155,7		13,85	1,2	54,05		16,65	1,6
152	17,30	0,7	80,30		16,30	0,3	49,50		19,00	0,4
158	15,80	1,5	132,9		12,40	2,1	53,40		15,90	2,0
166	26,00	3,9	110,0		18,00	1,4	64,00		22,00	1,1
184	20,48	1,0	108,4		15,79	0,0	58,25		20,27	0,3
213	18,40	0,2	82,55		16,85	0,7	66,08		19,86	0,1
230	21,50	1,5	75,00		15,50	0,2	40,50		20,50	0,4
267	16,50	1,2	101,0		15,00	0,5	49,50		18,00	0,9

Die mit gekennzeichneten Felder sind Ausreißer!

	n-Heptan	OMCTS	p-Xylol	R(+)- Limonen	Toluol
Gesamtmittelwert c_k [$\mu\text{g} / \text{m}^3$]	18,69		15,79		19,76
Standardabweichung S_k [$\mu\text{g} / \text{m}^3$]	2,212		1,573		2,204
rel. Standardabweichung [%]	11,83		9,96		11,15
Mittelwert aus QS [$\mu\text{g} / \text{m}^3$]	18,90		14,30		16,40

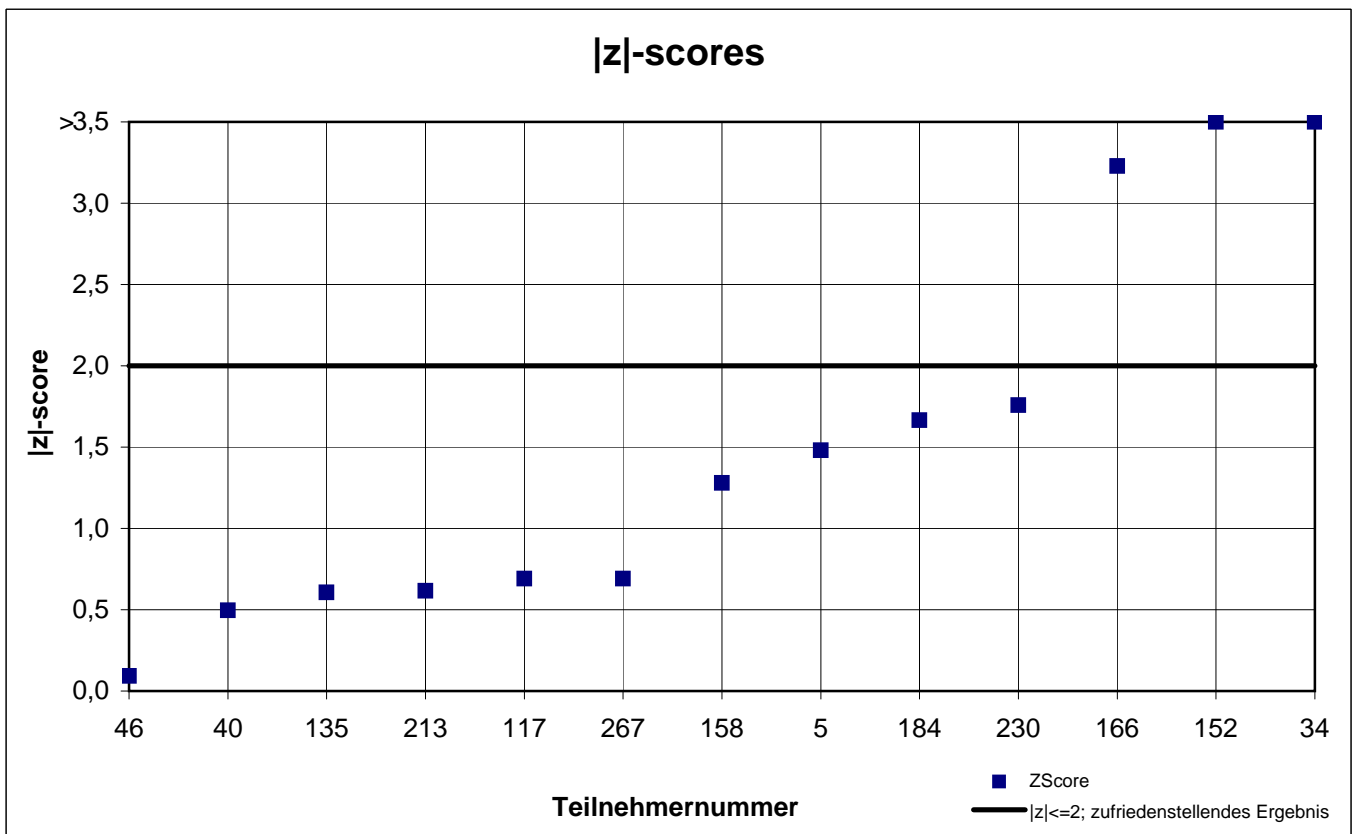
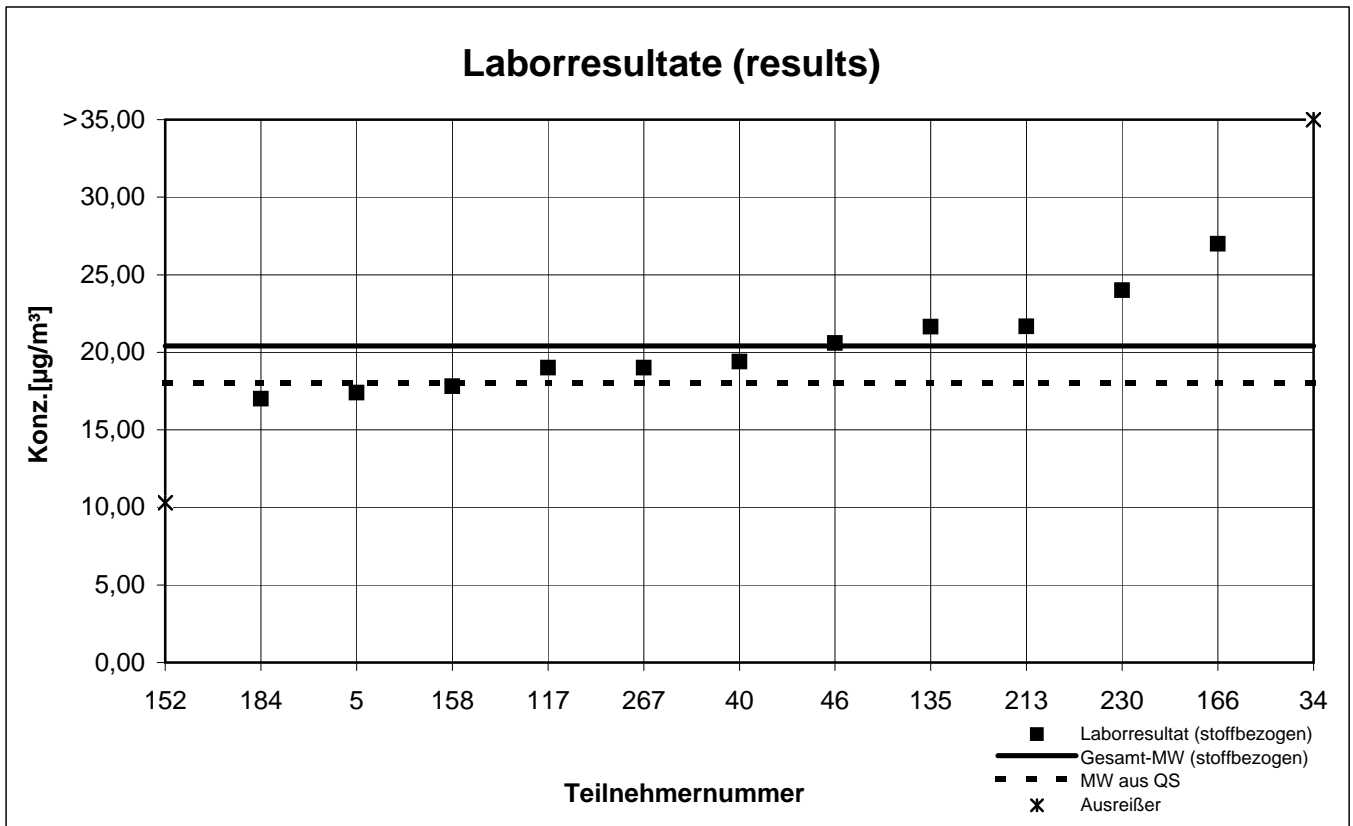
Probe 1 (sample 1)

1,2,3-Trimethylbenzol



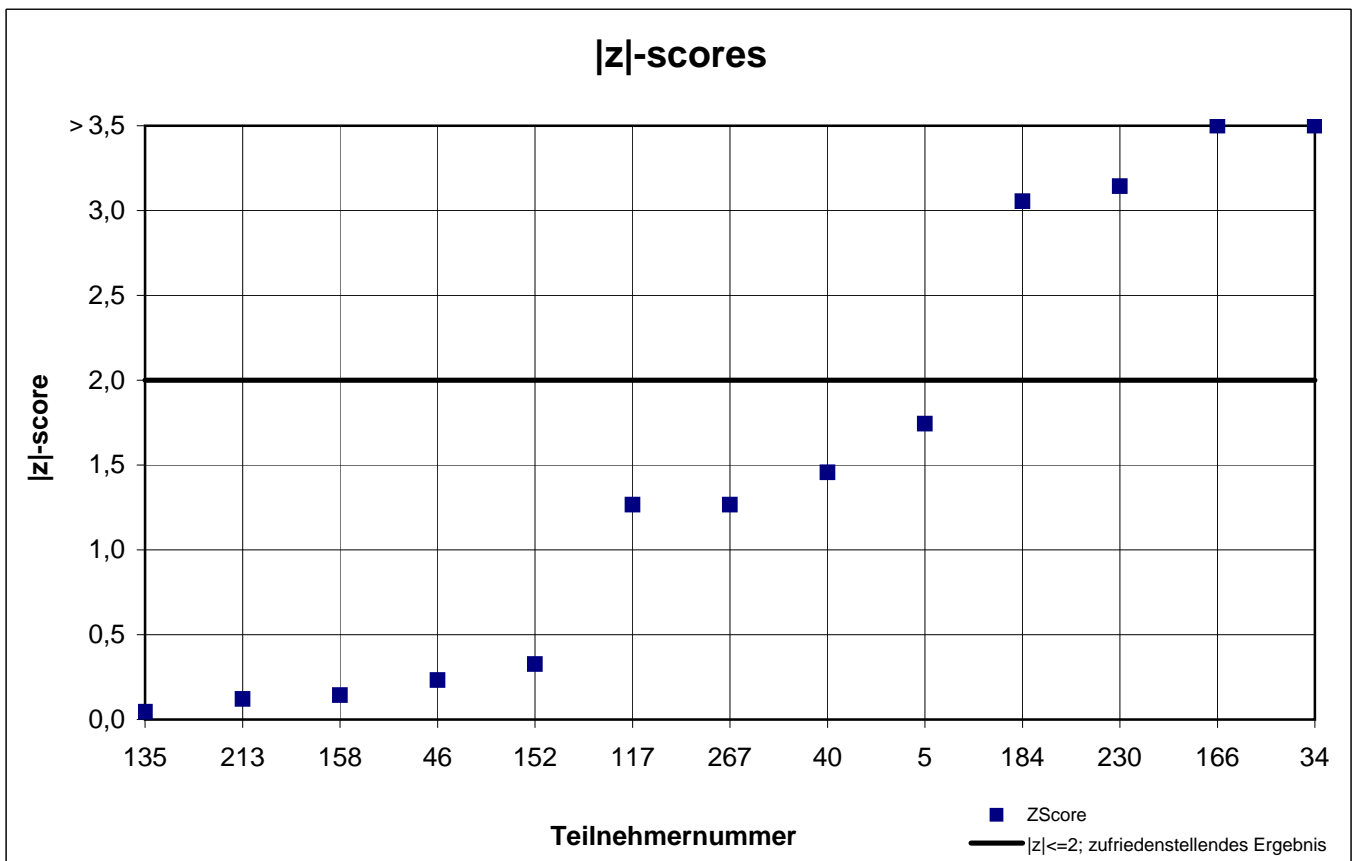
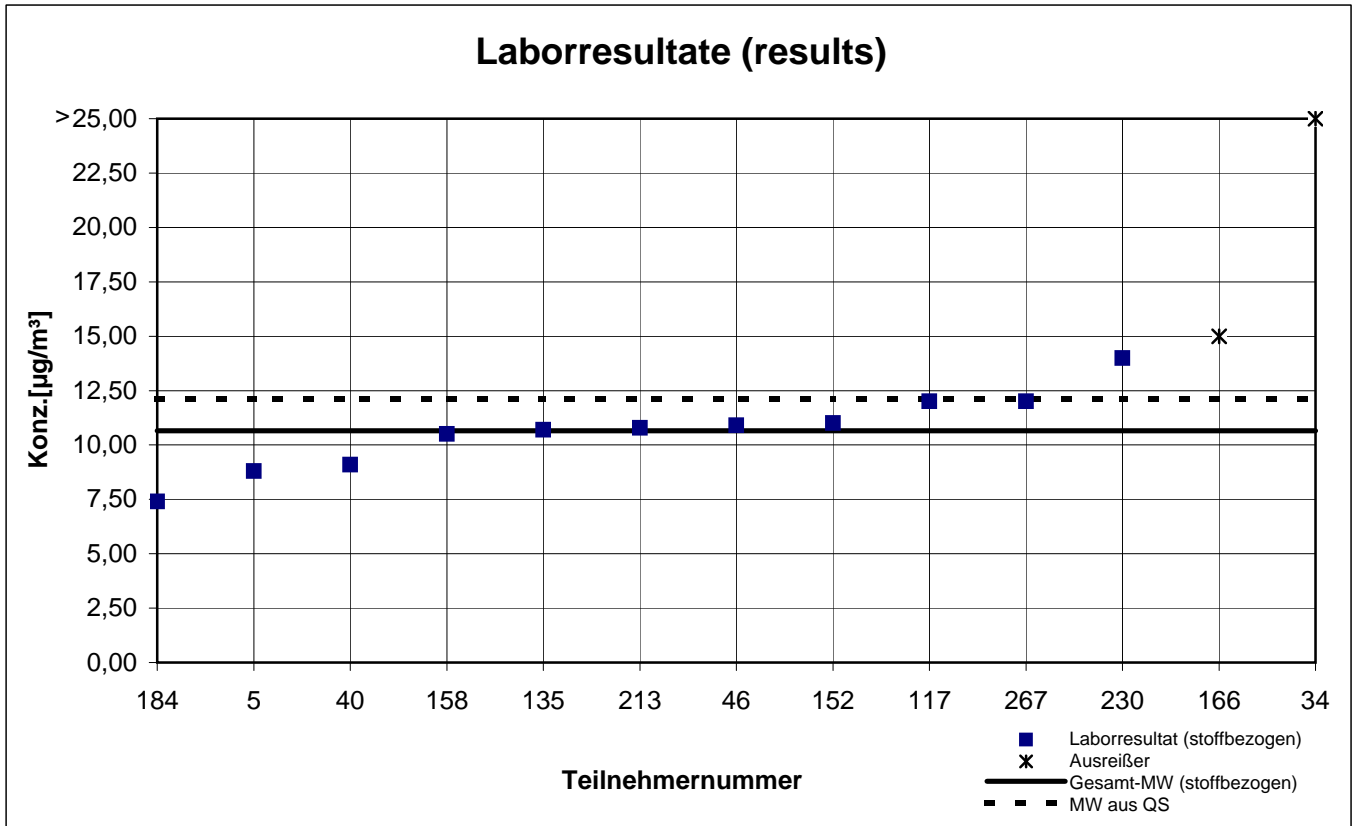
Probe 1 (sample 1)

2-Butoxyethanol



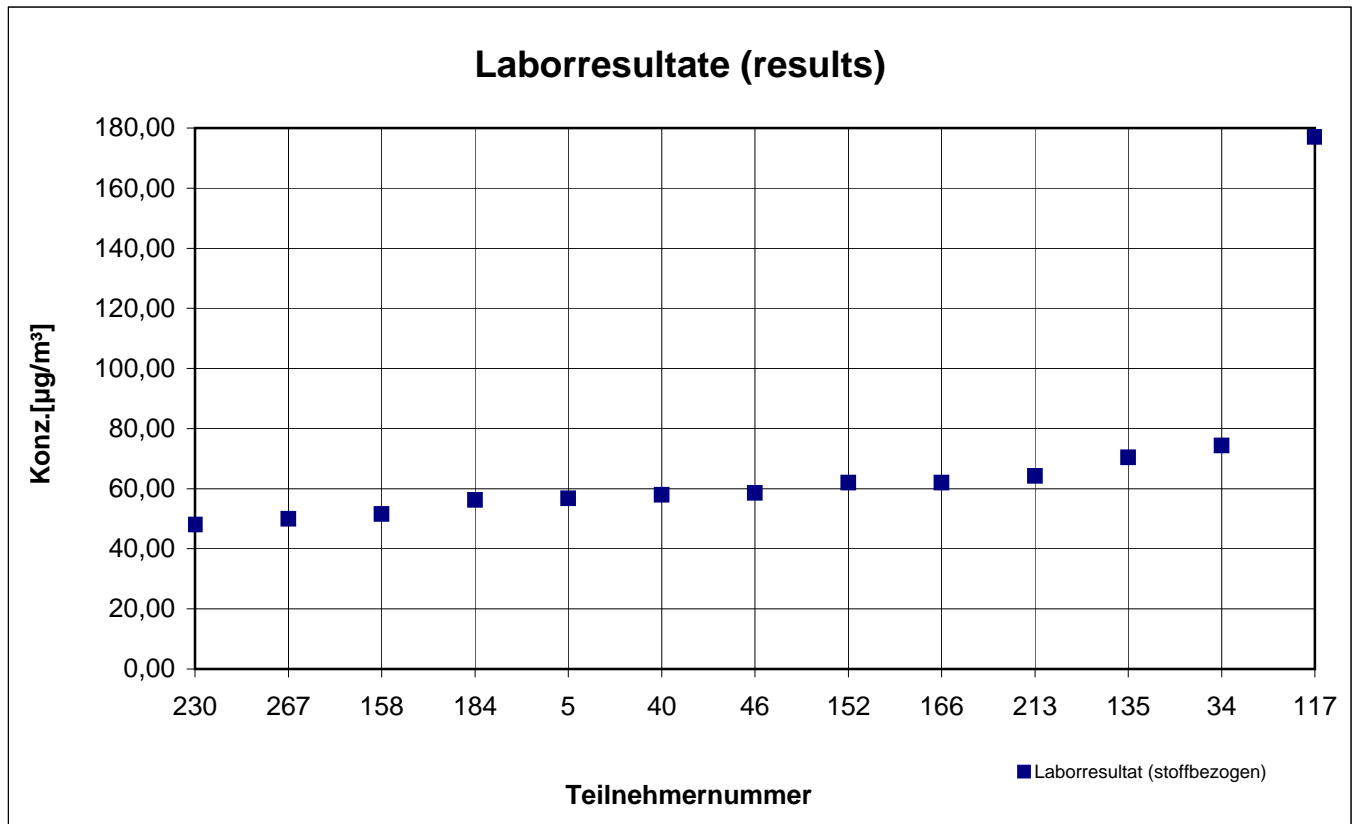
Probe 1 (sample 1)

2-Phenoxyethanol



Probe 1 (sample 1)

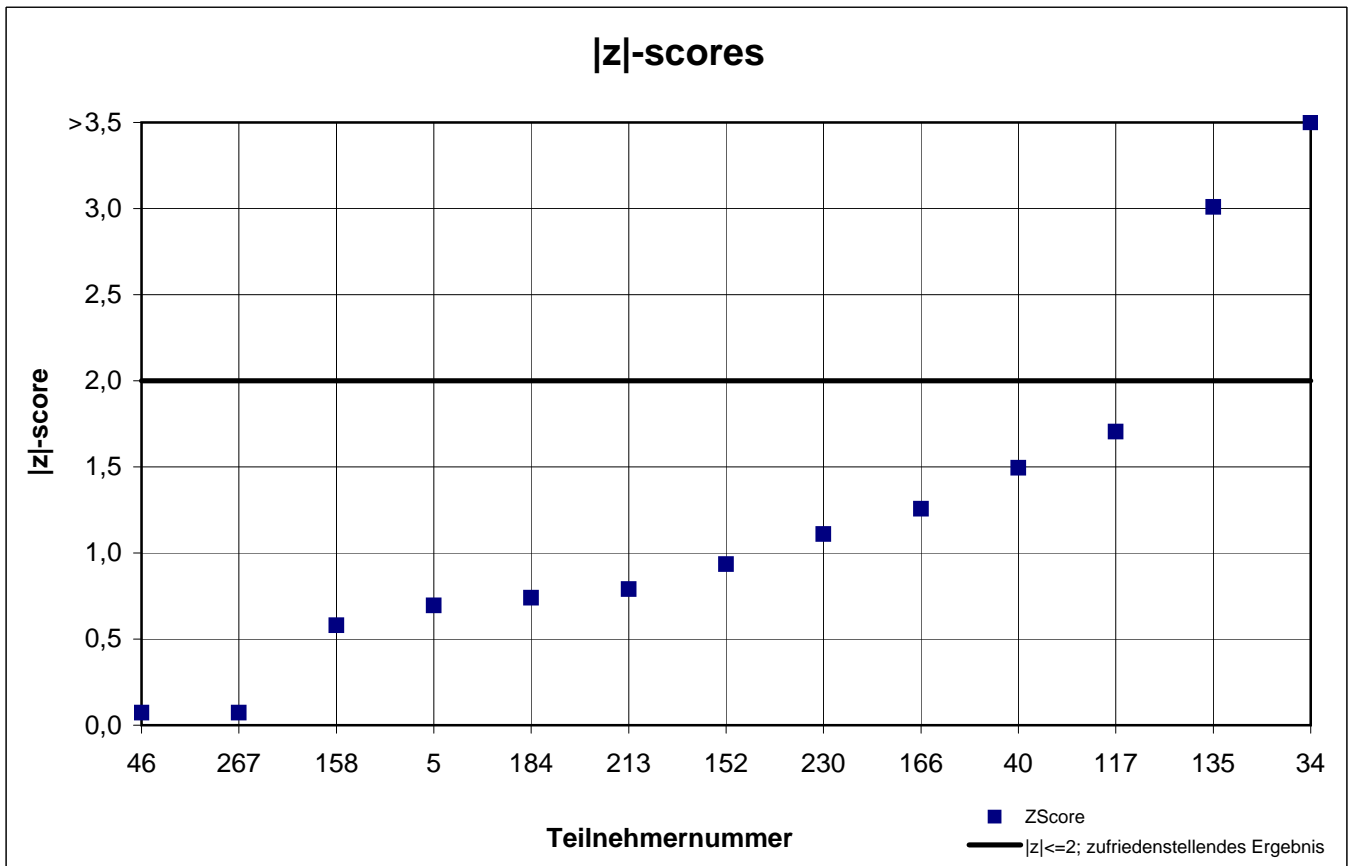
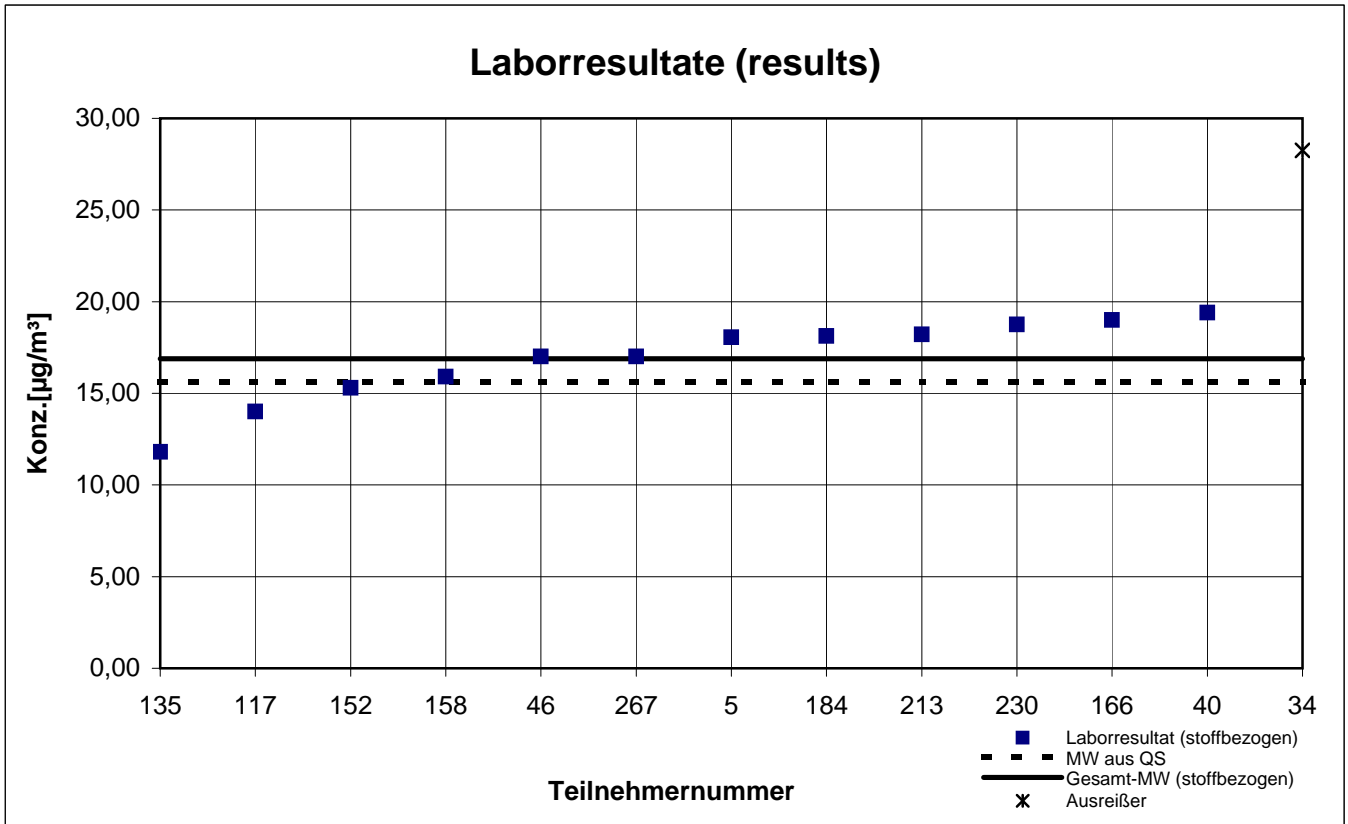
Dodecan



keine z-score-Auswertung

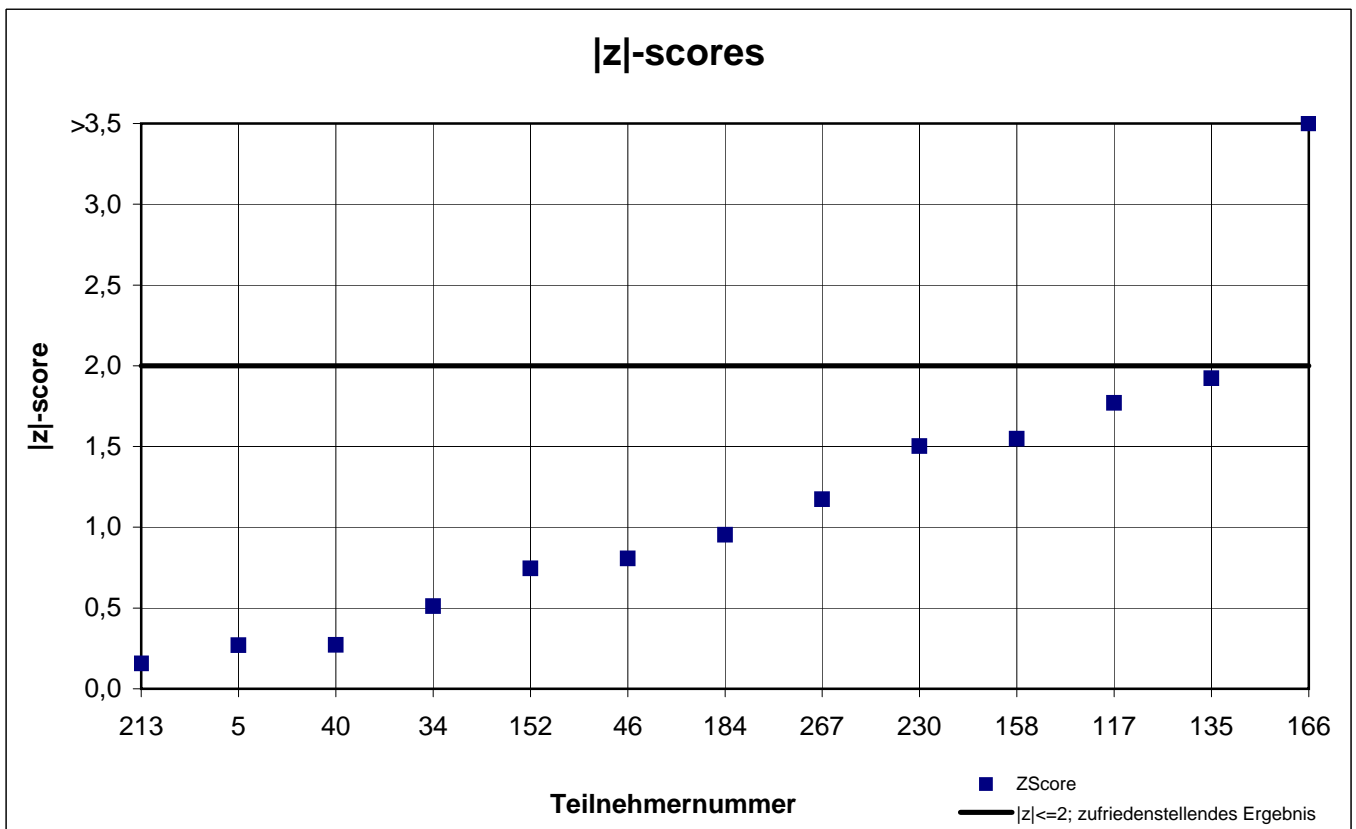
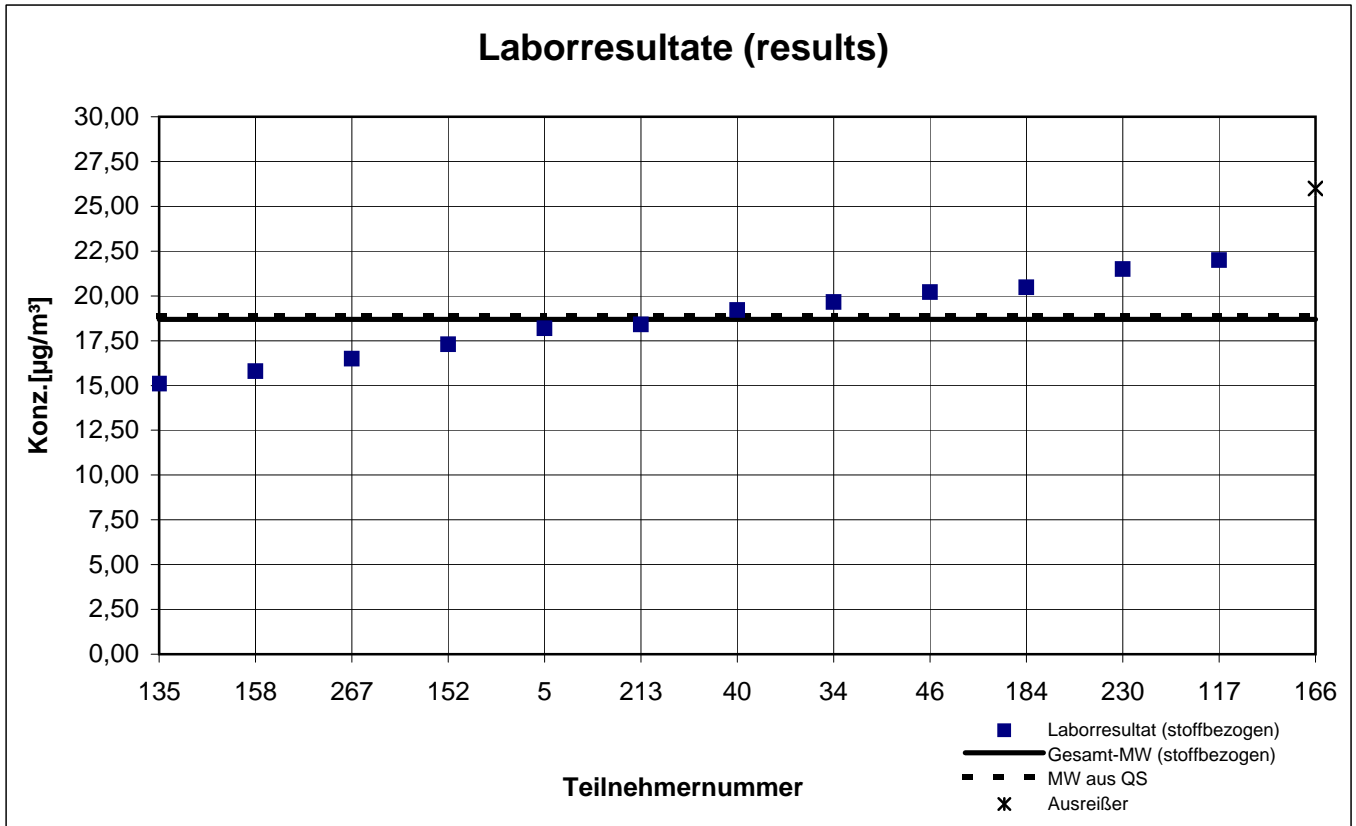
Probe 1 (sample 1)

Ethylacetat



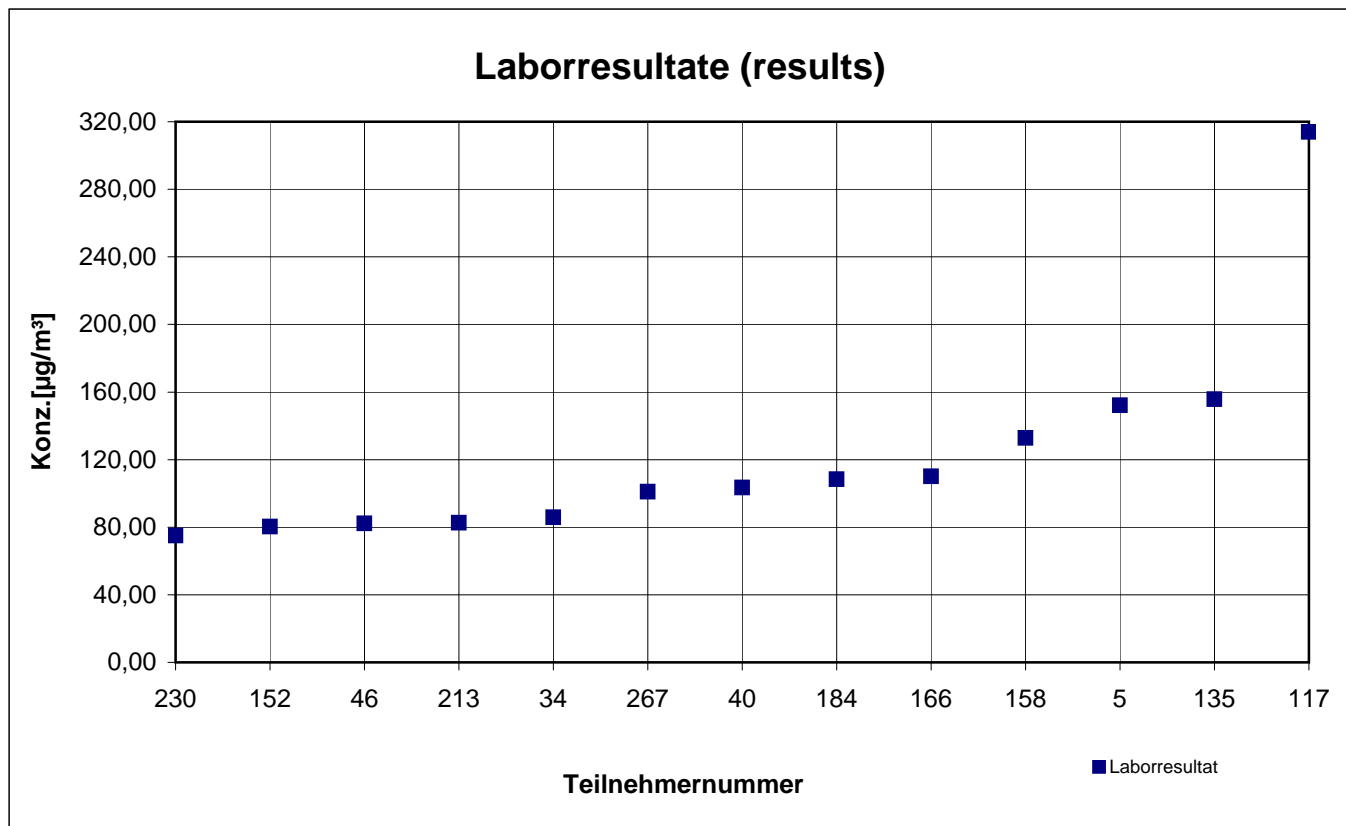
Probe 1 (sample 1)

n-Heptan



Probe 1 (sample 1)

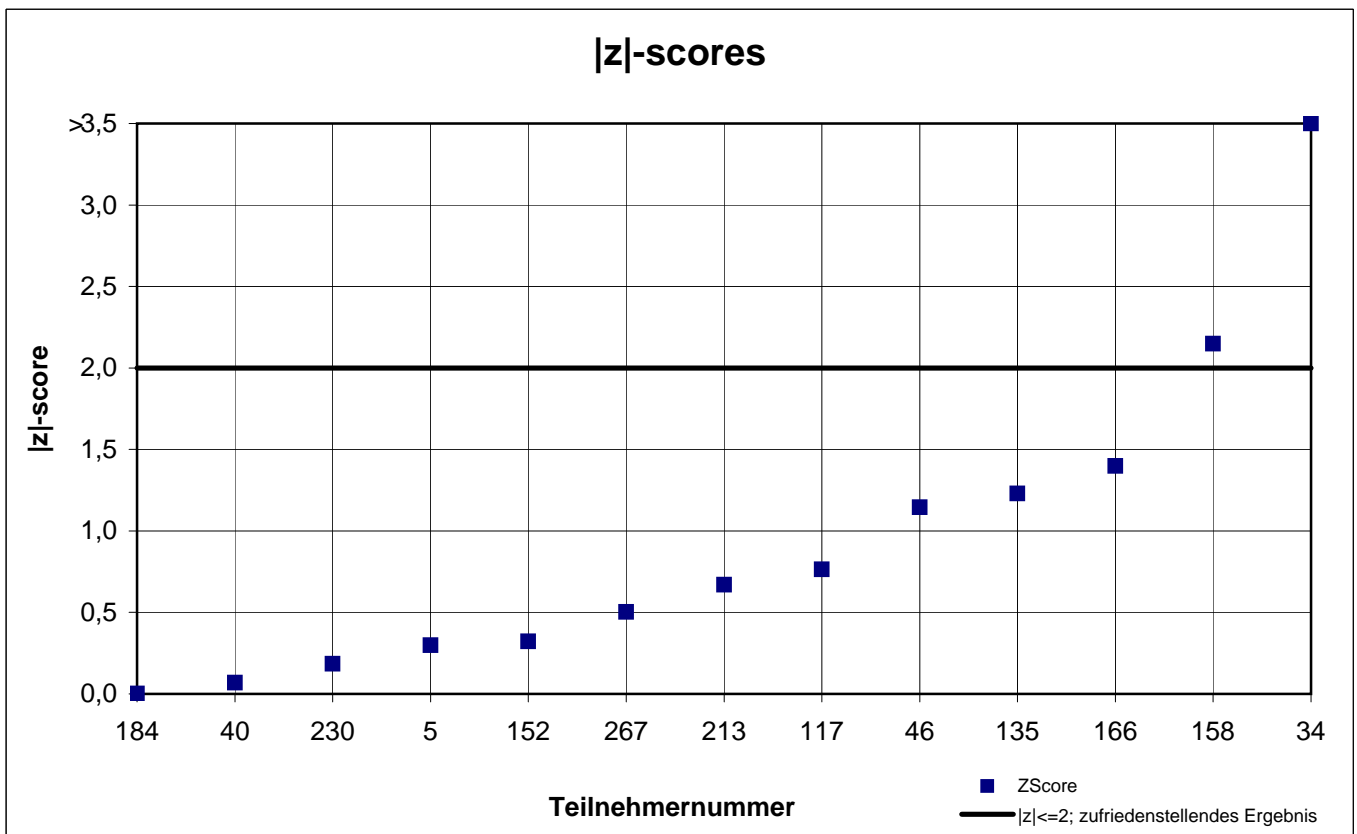
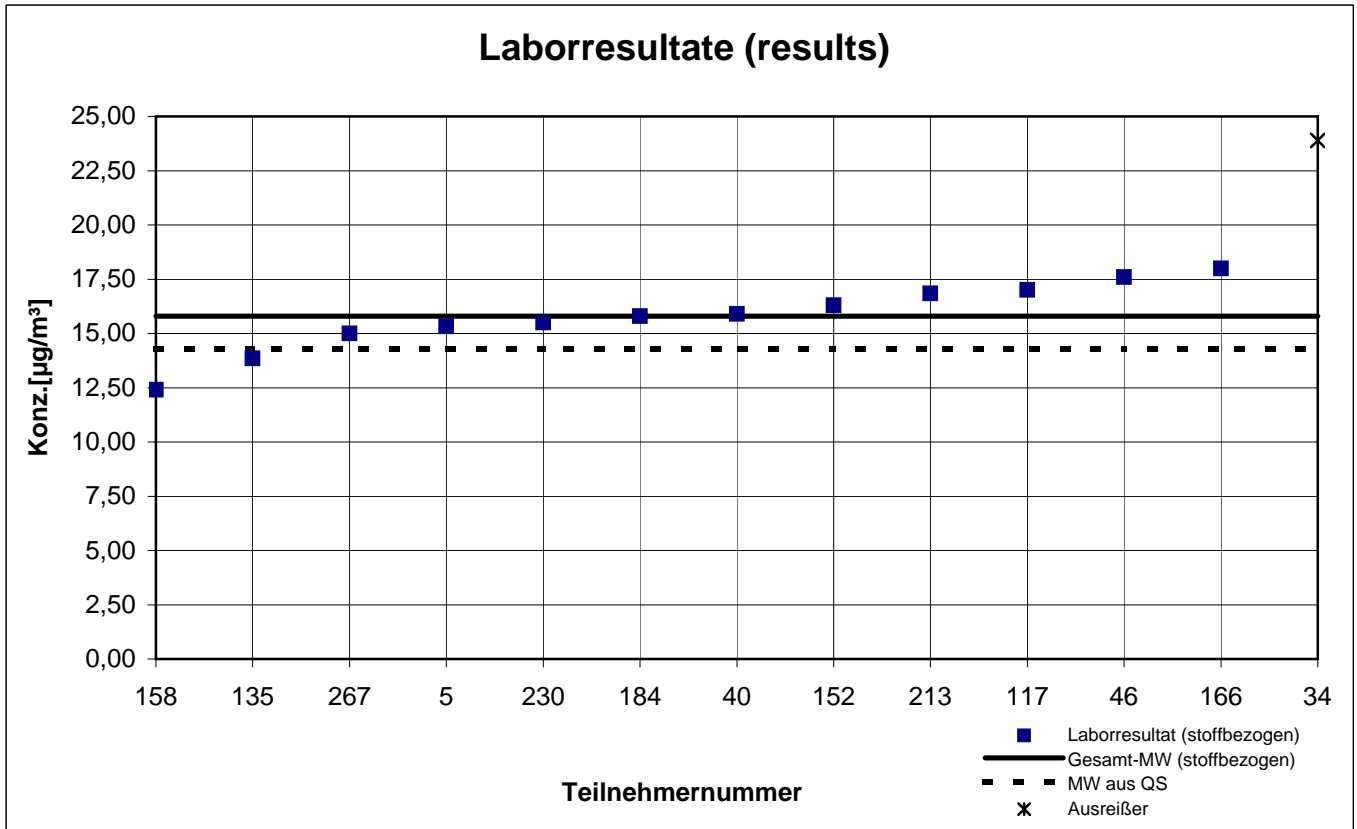
Octamethylcyclotetrasiloxan



keine z-score-Auswertung

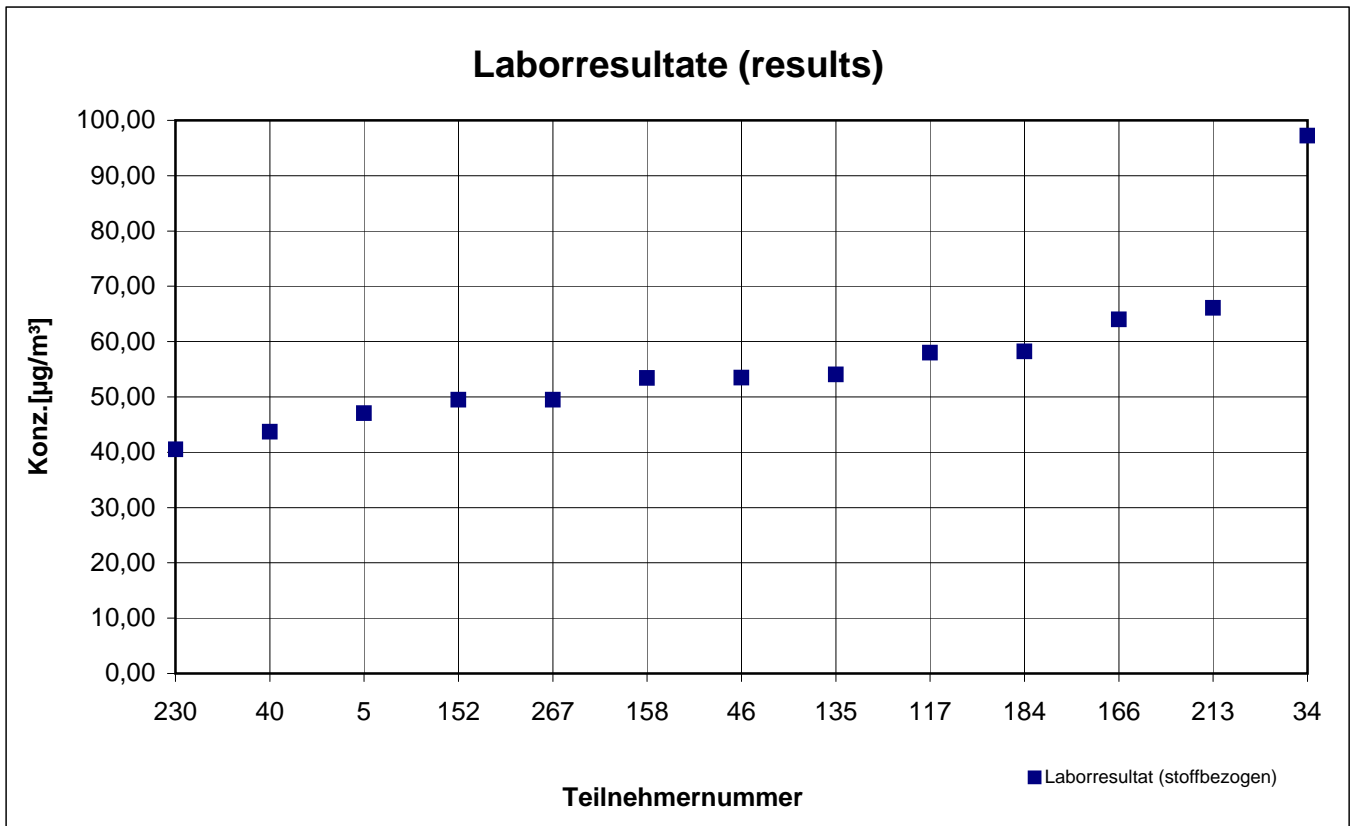
Probe 1 (sample 1)

p-Xylol



Probe 1 (sample 1)

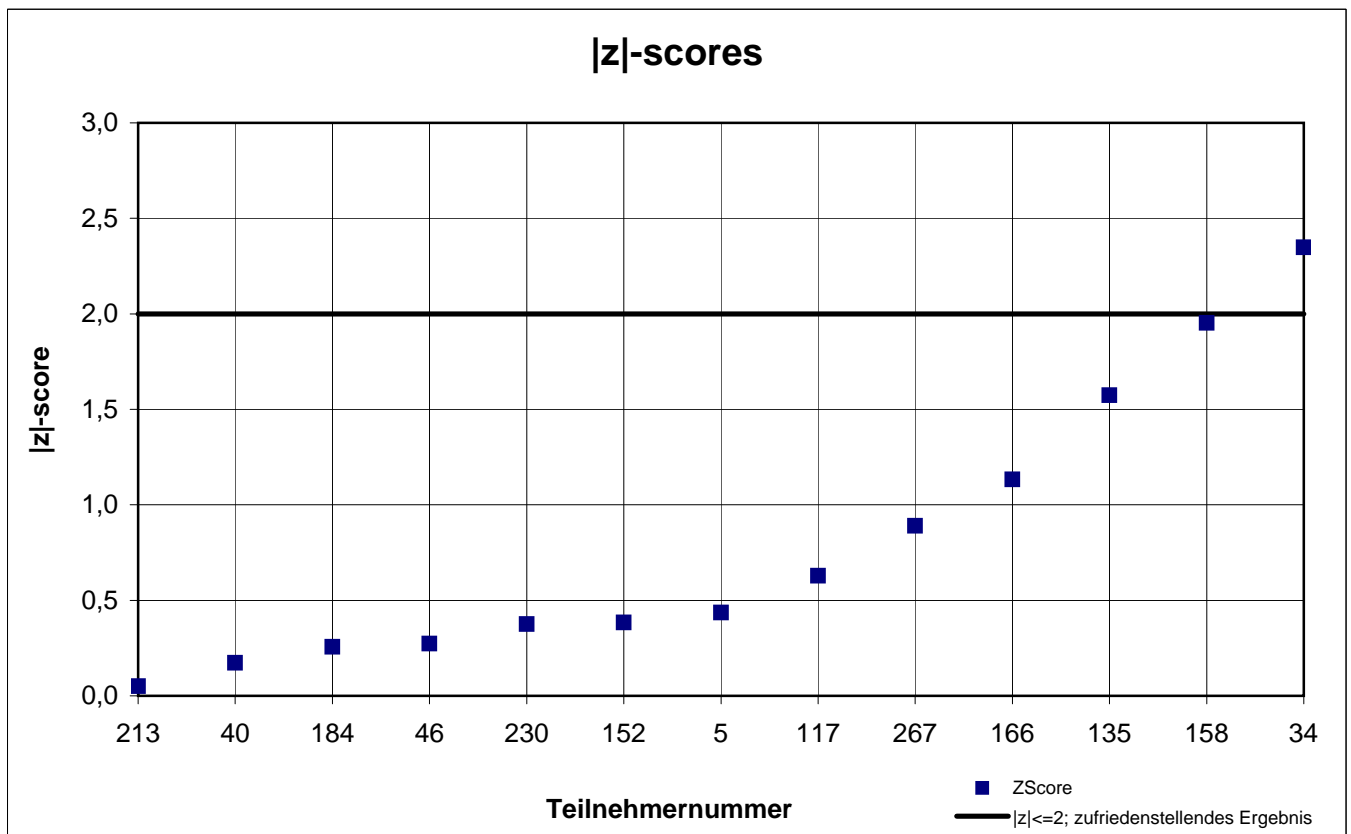
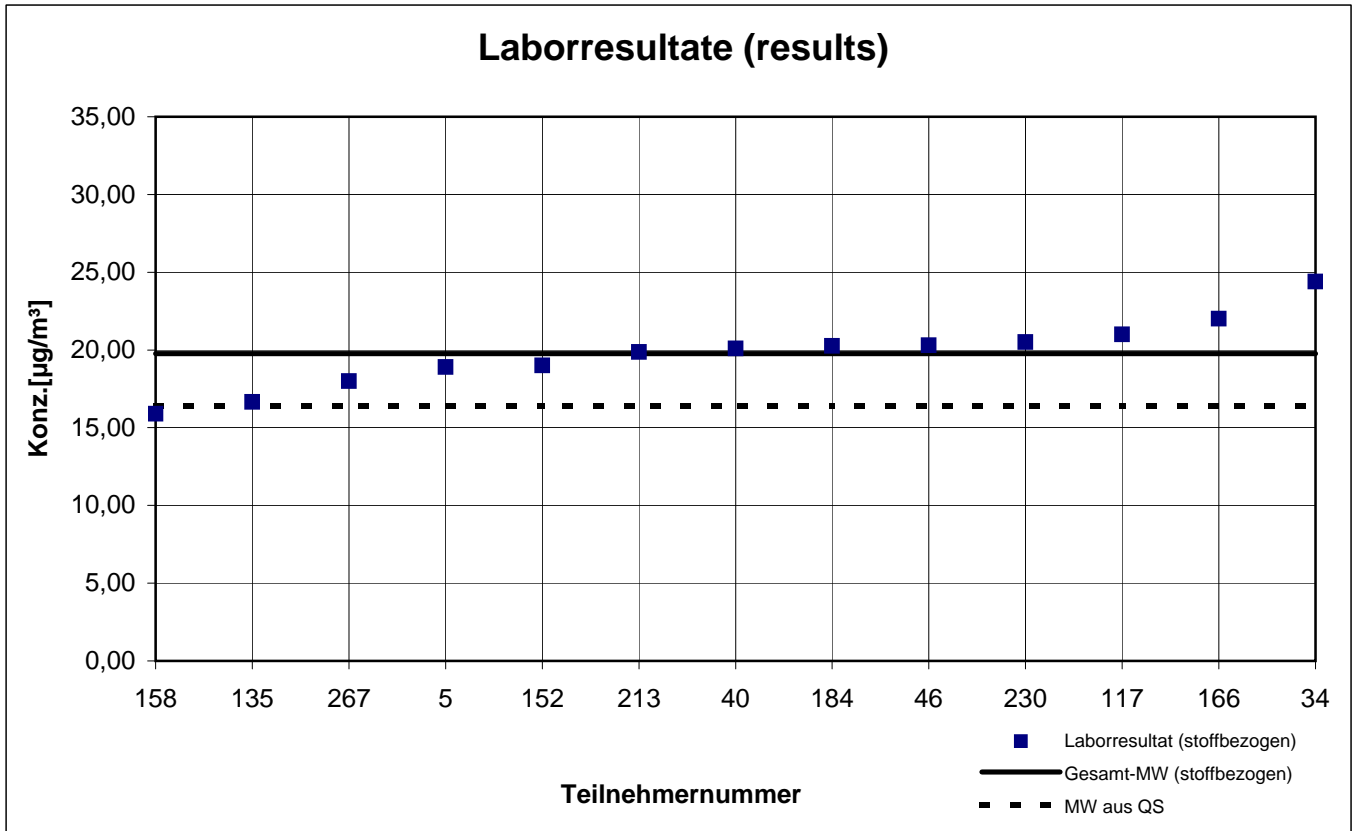
R(+)-Limonen



keine z-score-Auswertung

Probe 1 (sample 1)

Toluol



Probe 2 - Gesamtauswertung (Teil 1)

Teilnehmer- nummer	1,2,3-Trimethylbenzol		2-Butoxyethanol		2-Phenoxyethanol		Dodecan		Ethylacetat	
	Labor- resultat ($\mu\text{g} / \text{m}^3$)	z - score	Labor- resultat ($\mu\text{g} / \text{m}^3$)	z - score	Labor- resultat ($\mu\text{g} / \text{m}^3$)	z - score	Labor- resultat ($\mu\text{g} / \text{m}^3$)	z - score	Labor- resultat ($\mu\text{g} / \text{m}^3$)	z - score
5	38,78	0,1	36,54	1,7	11,88	2,8	45,39		38,52	1,0
34	26,30	3,2	75,65	7,2	103,9	53,2	68,50		37,50	0,7
40	43,00	1,2	44,70	0,2	11,90	2,8	55,80		37,80	0,8
46	43,40	1,3	43,40	0,1	18,60	1,3	59,20		36,60	0,4
117	38,00	0,1	45,00	0,3	15,00	0,9	119,0		28,00	2,0
135	40,90	0,6	56,00	2,8	17,50	0,7	55,15		34,70	0,1
152	42,50	1,1	22,00	5,0	16,80	0,2	55,30		33,30	0,5
158	38,20	0,1	31,50	2,8	15,40	0,6	48,10		35,70	0,2
166	43,00	1,2	49,00	1,2	16,00	0,3	70,00		37,00	0,5
184	44,82	1,7	47,76	0,9	14,27	1,3	66,79		39,43	1,2
213	33,48	1,3	38,30	1,3	17,15	0,4	48,56		32,40	0,8
230	30,00	2,2	49,50	1,3	20,50	2,5	38,50		29,50	1,6
267	37,00	0,4	41,00	0,7	22,00	3,4	67,00		36,50	0,4

Die mit gekennzeichneten Felder sind Ausreißer!

	1,2,3- Trimethyl- benzol	2-Butoxy- ethanol	2-Phenoxy- ethanol	Dodecan	Ethylacetat
Gesamtmittelwert c_k [$\mu\text{g} / \text{m}^3$]	38,41	43,88	16,42		35,15
Standardabweichung S_k [$\mu\text{g} / \text{m}^3$]	5,591	6,844	3,064		3,465
rel. Standardabweichung [%]	14,55	15,60	18,66		9,86
Mittelwert aus QS [$\mu\text{g} / \text{m}^3$]	39,00	39,50	16,50		31,60

Probe 2 - Gesamtauswertung (Teil 2)

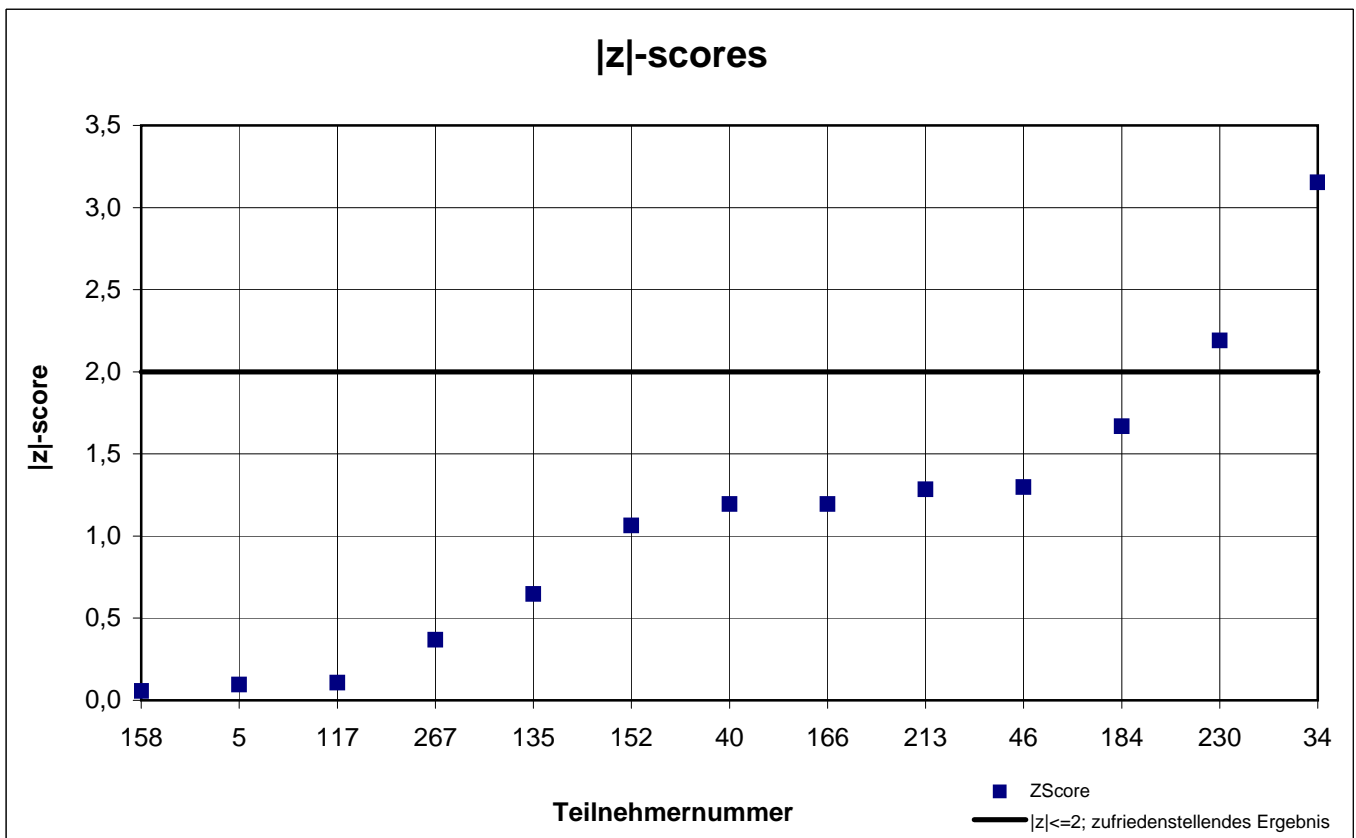
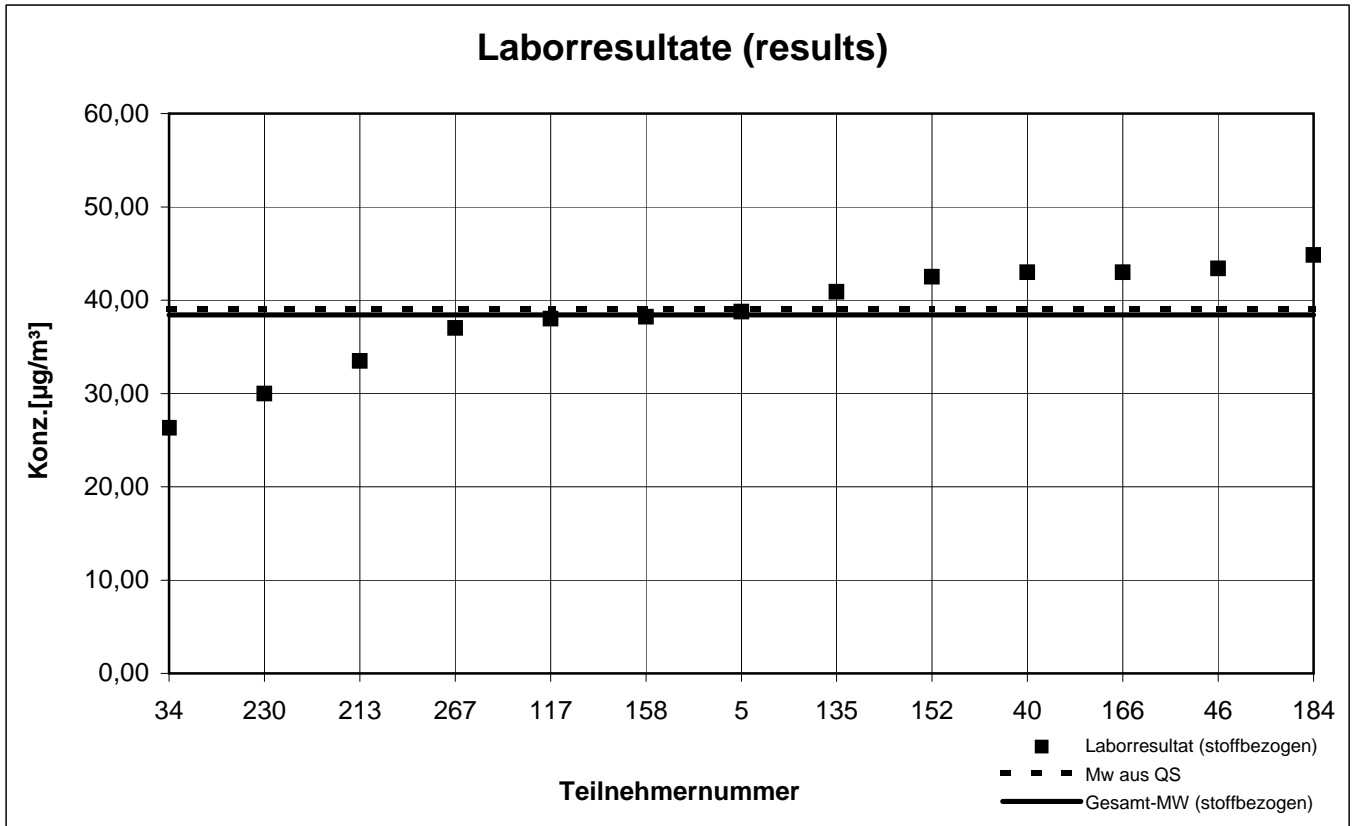
Teilnehmer- nummer	n-Heptan		Octamethylcyclo- tetrasiloxan		p-Xylol		R(+)-Limonen		Toluol	
	Labor- resultat ($\mu\text{g} / \text{m}^3$)	z - score	Labor- resultat ($\mu\text{g} / \text{m}^3$)	z - score	Labor- resultat ($\mu\text{g} / \text{m}^3$)	z - score	Labor- resultat ($\mu\text{g} / \text{m}^3$)	z - score	Labor- resultat ($\mu\text{g} / \text{m}^3$)	z - score
5	38,45	0,1	75,92	0,4	33,00	0,2	40,44	1,0	41,28	0,0
34	42,15	1,1	54,50	2,6	43,05	2,8	93,30	10,7	46,05	1,2
40	38,50	0,1	88,40	2,1	34,80	0,4	43,80	0,3	42,50	0,3
46	40,40	0,6	62,70	1,4	36,50	0,9	46,80	0,4	42,90	0,4
117	58,00	5,3	85,00	1,6	26,00	2,3	49,00	0,9	47,00	1,4
135	37,20	0,2	84,95	1,6	34,05	0,1	46,30	0,3	41,65	0,1
152	35,80	0,6	67,30	0,8	32,80	0,2	40,80	0,9	39,50	0,4
158	36,30	0,4	74,00	0,1	30,90	0,8	49,20	0,9	39,00	0,5
166	52,00	3,7	80,00	0,9	36,00	0,7	58,00	2,9	46,00	1,2
184	42,53	1,2	88,96	2,2	36,46	0,9	50,83	1,3	45,31	1,0
213	32,03	1,6	59,55	1,9	28,59	1,5	35,78	2,1	33,48	1,9
230	37,50	0,1	49,00	3,3	29,50	1,2	34,50	2,3	29,50	2,8
267	37,00	0,3	81,50	1,1	34,50	0,3	45,00	0,0	41,50	0,1

Die mit gekennzeichneten Felder sind Ausreißer!

	n-Heptan	OMCTS	p-Xylol	R(+)- Limonen	Toluol
Gesamtmittelwert c_k [$\mu\text{g} / \text{m}^3$]	37,99	73,21	33,55	45,04	41,21
Standardabweichung S_k [$\mu\text{g} / \text{m}^3$]	2,987	13,374	4,301	6,582	5,051
rel. Standardabweichung [%]	7,86	18,27	12,82	14,62	12,26
Mittelwert aus QS [$\mu\text{g} / \text{m}^3$]	39,90	75,00	30,70	42,30	38,90

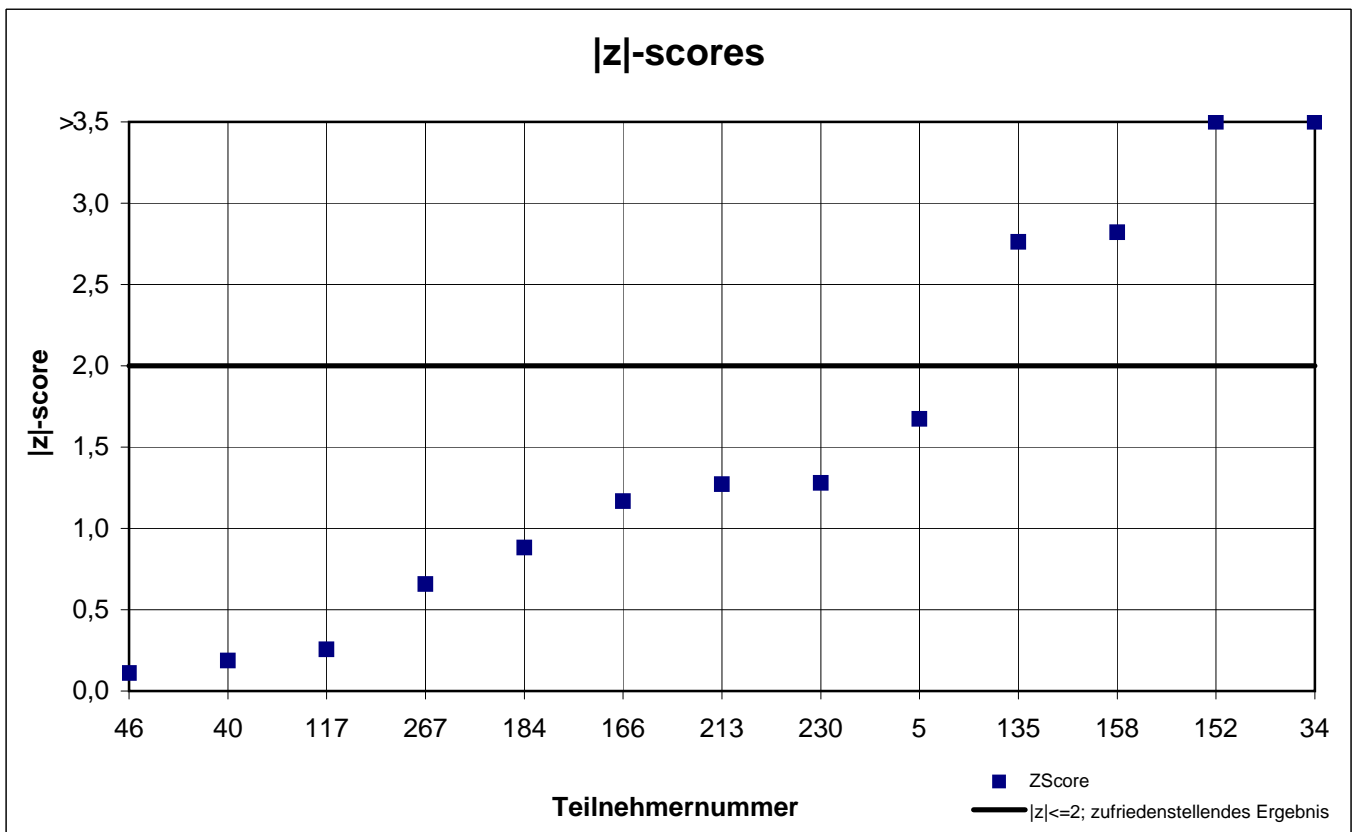
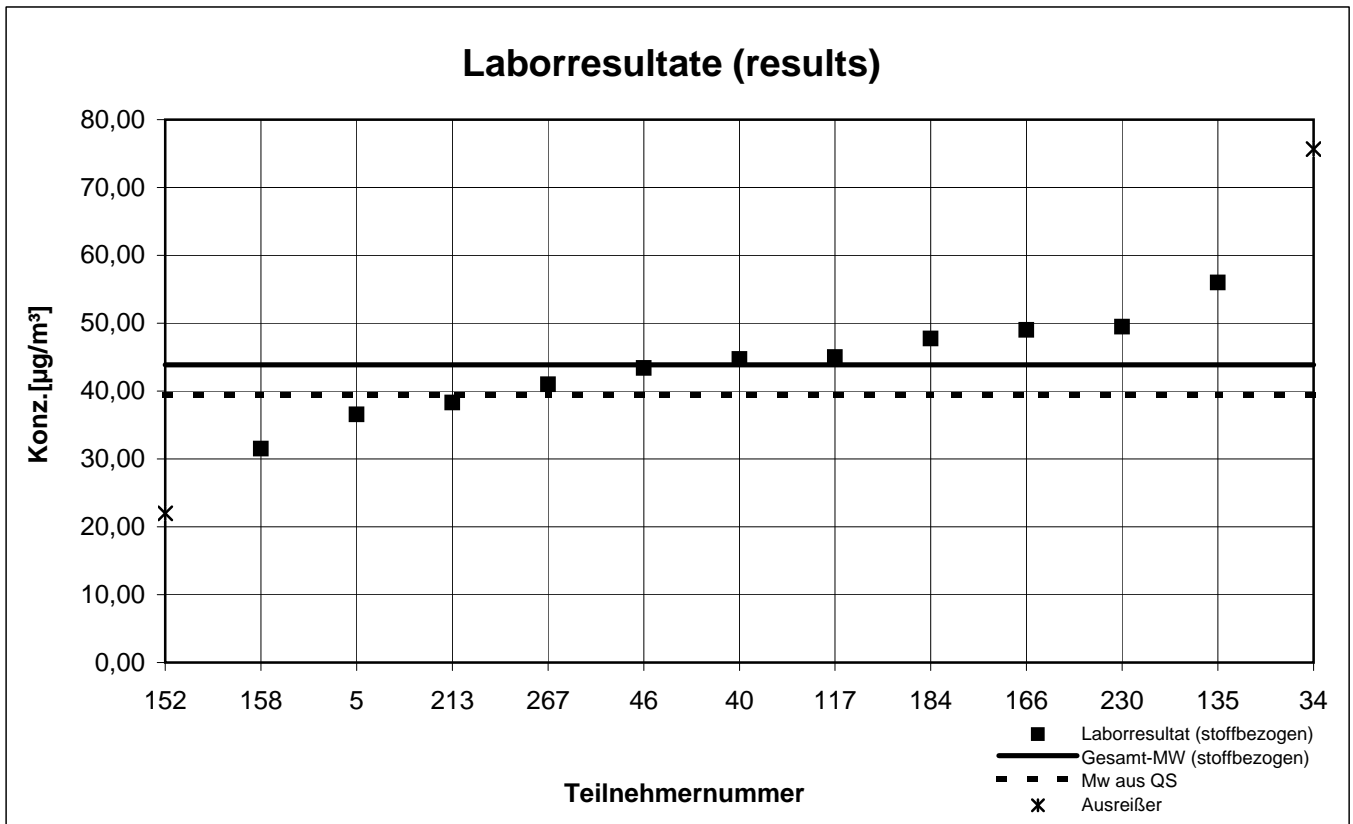
Probe 2 (sample 2)

1,2,3-Trimethylbenzol



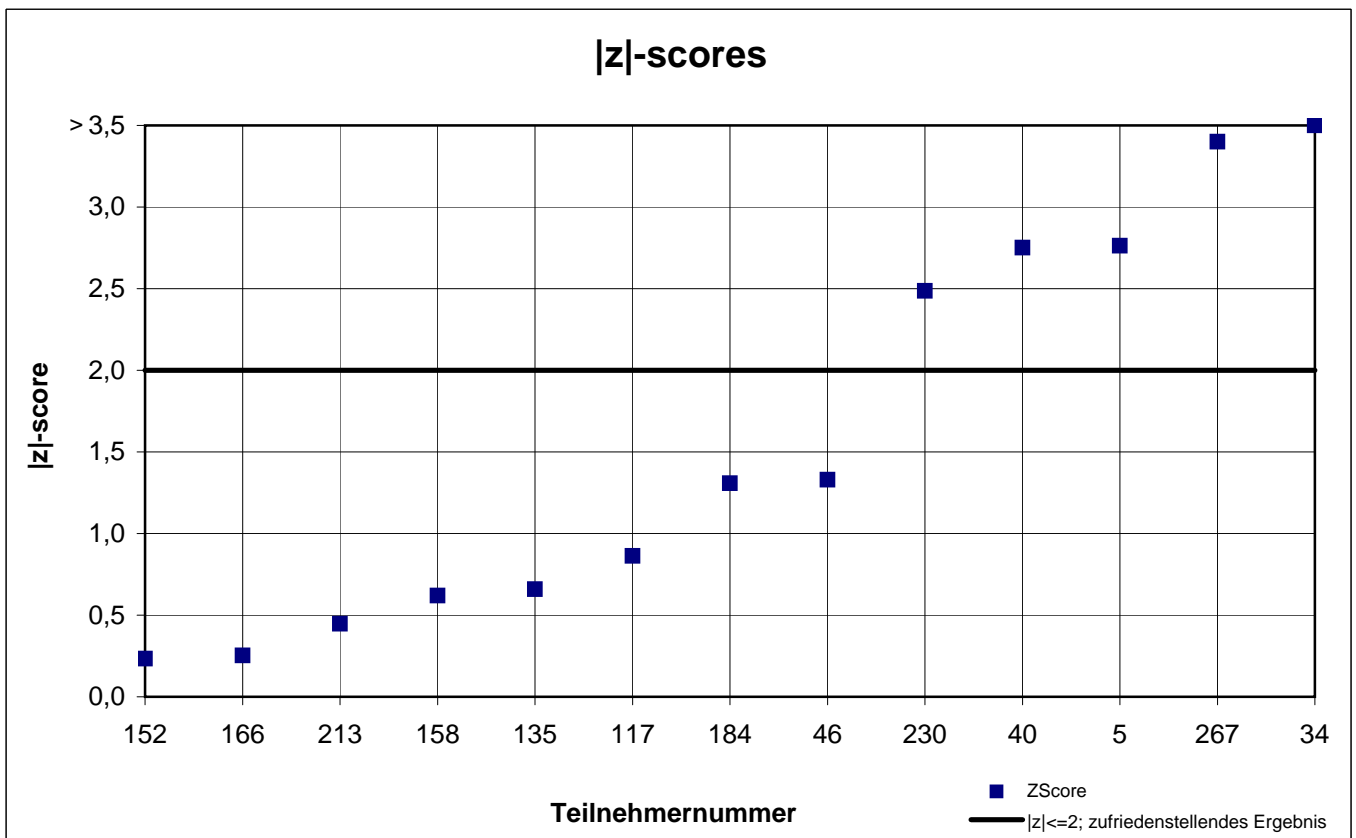
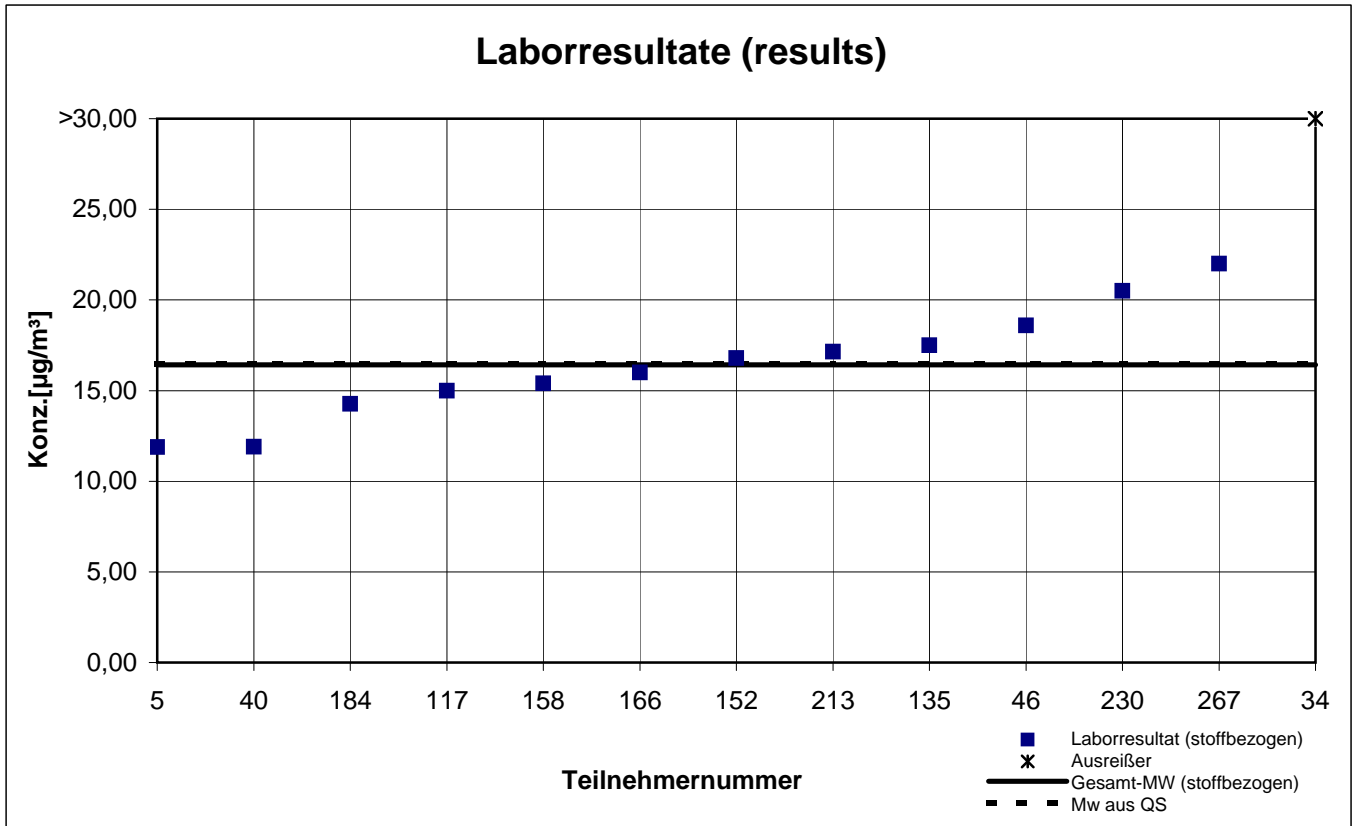
Probe 2 (sample 2)

2-Butoxyethanol



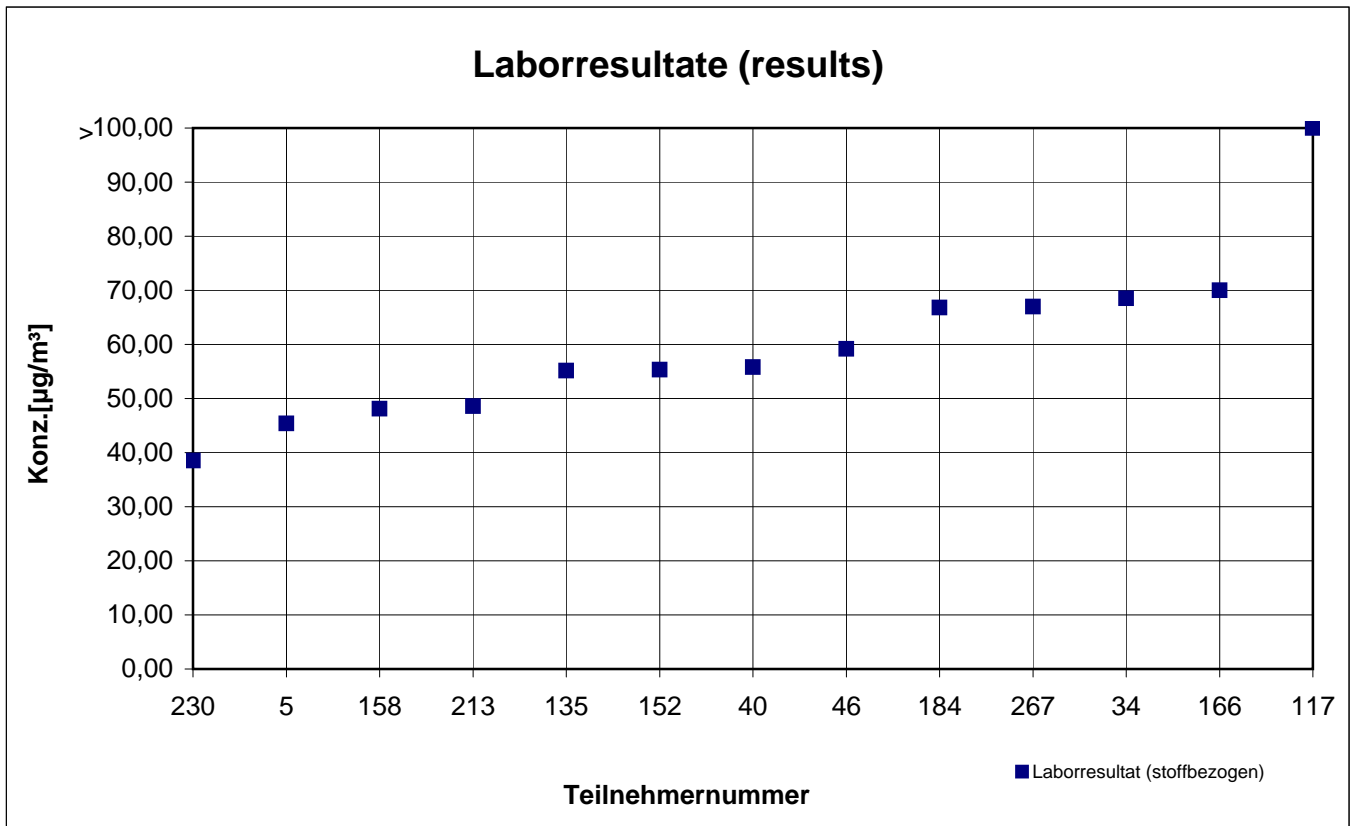
Probe 2 (sample 2)

2-Phenoxyethanol



Probe 2 (sample 2)

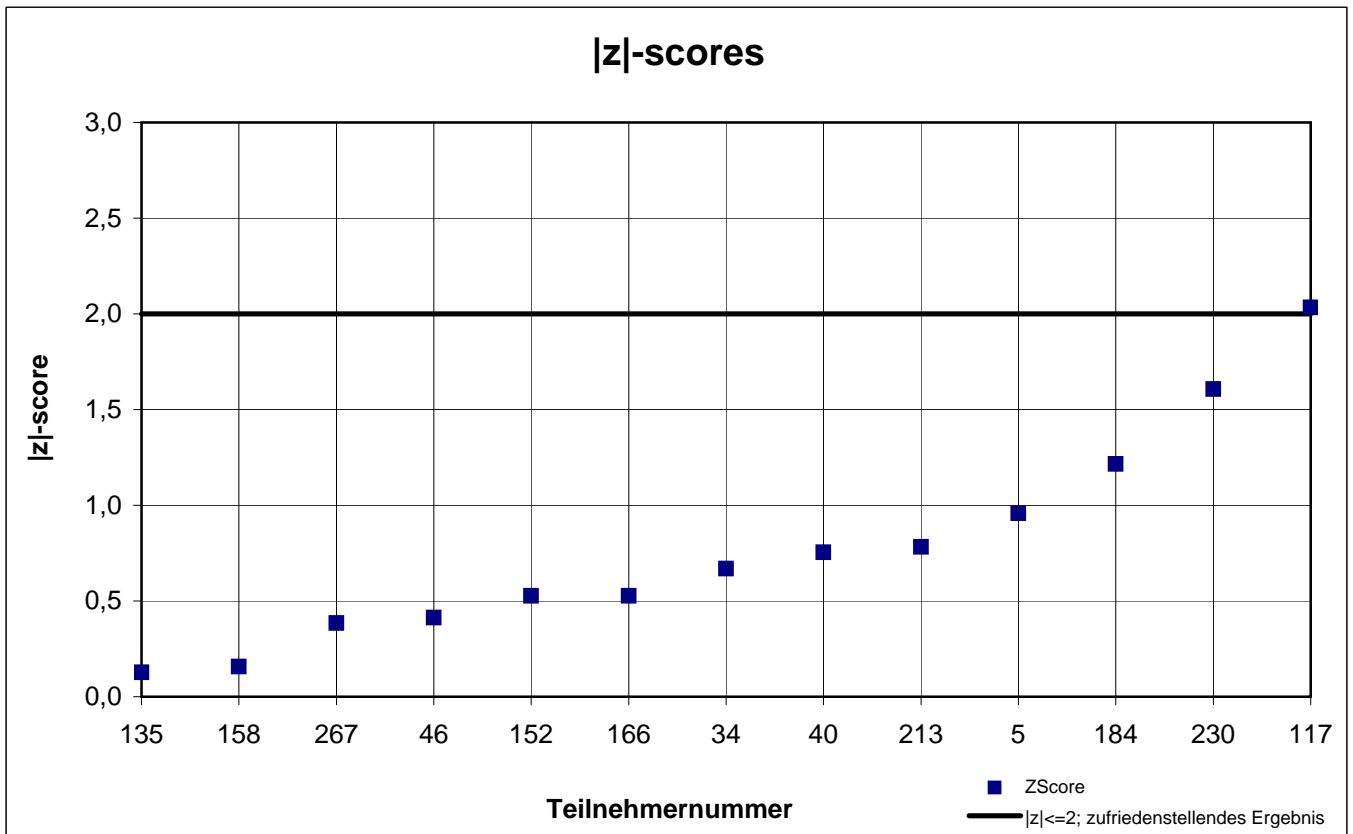
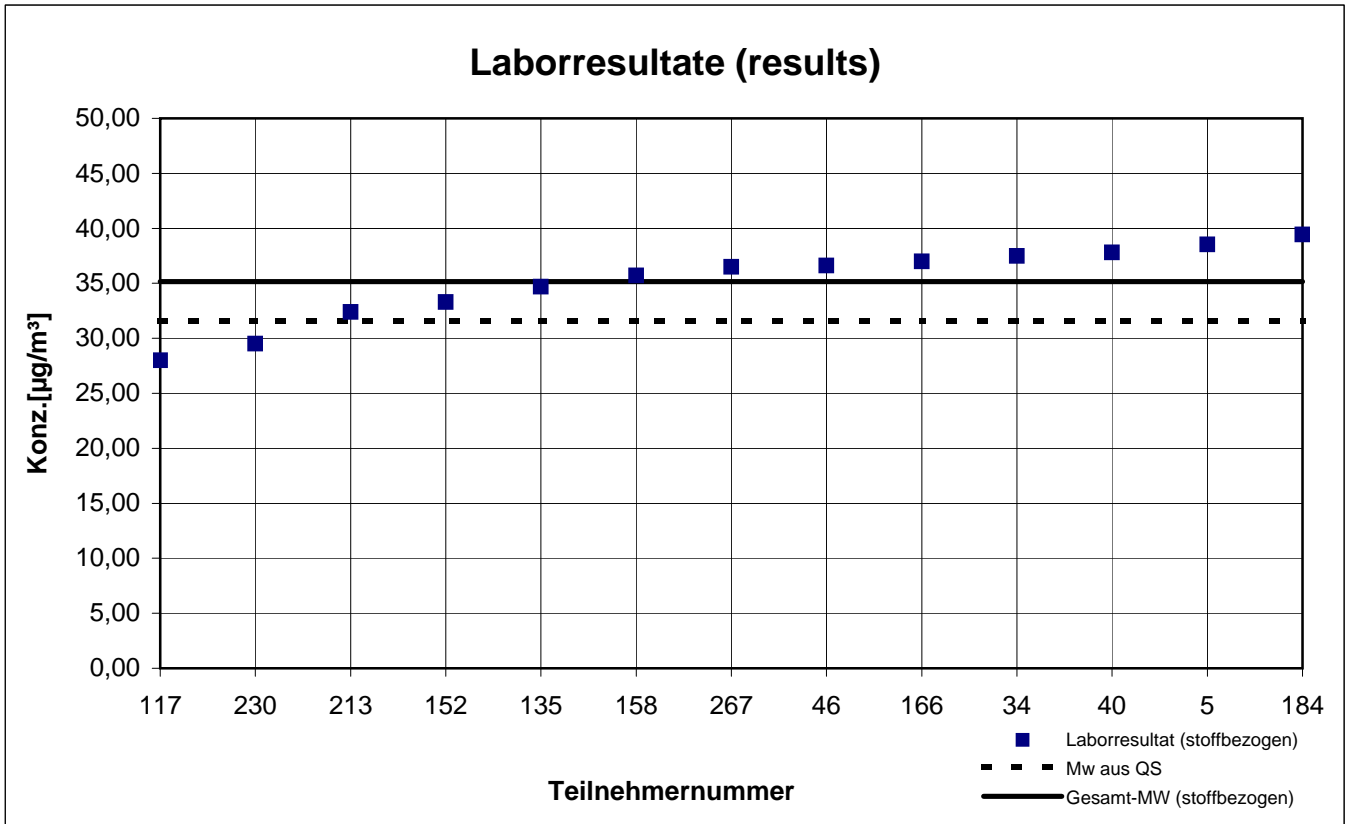
Dodecan



keine z-score-Auswertung

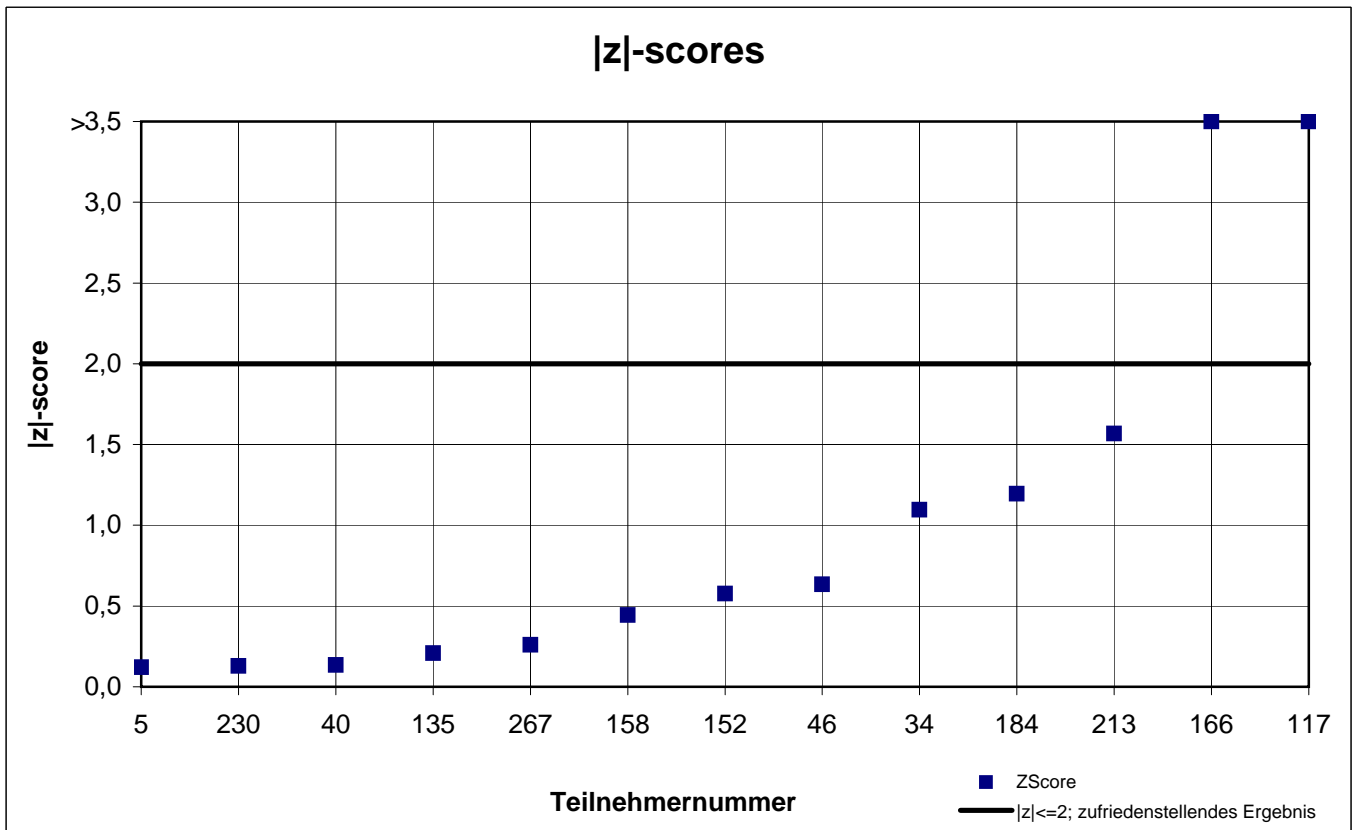
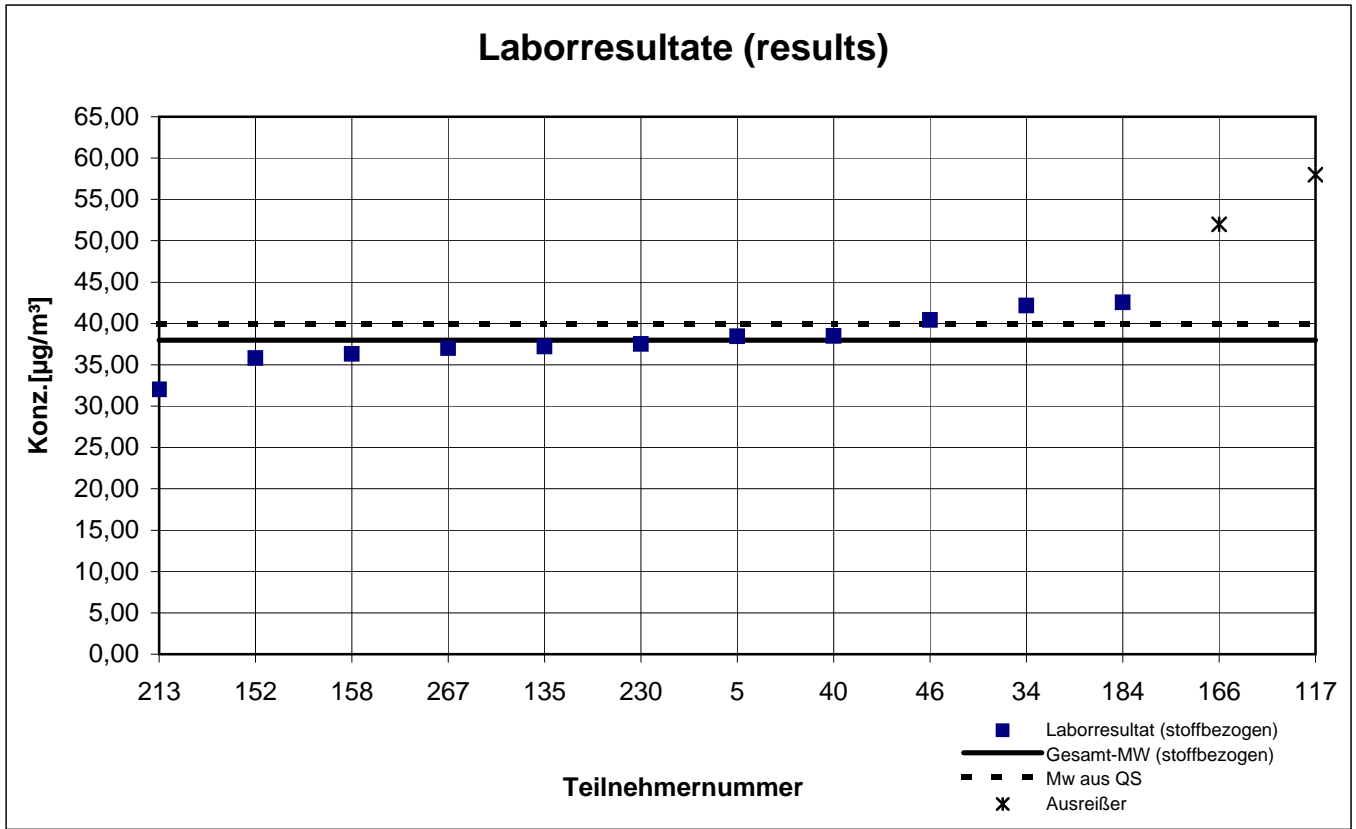
Probe 1 (sample 1)

Ethylacetat



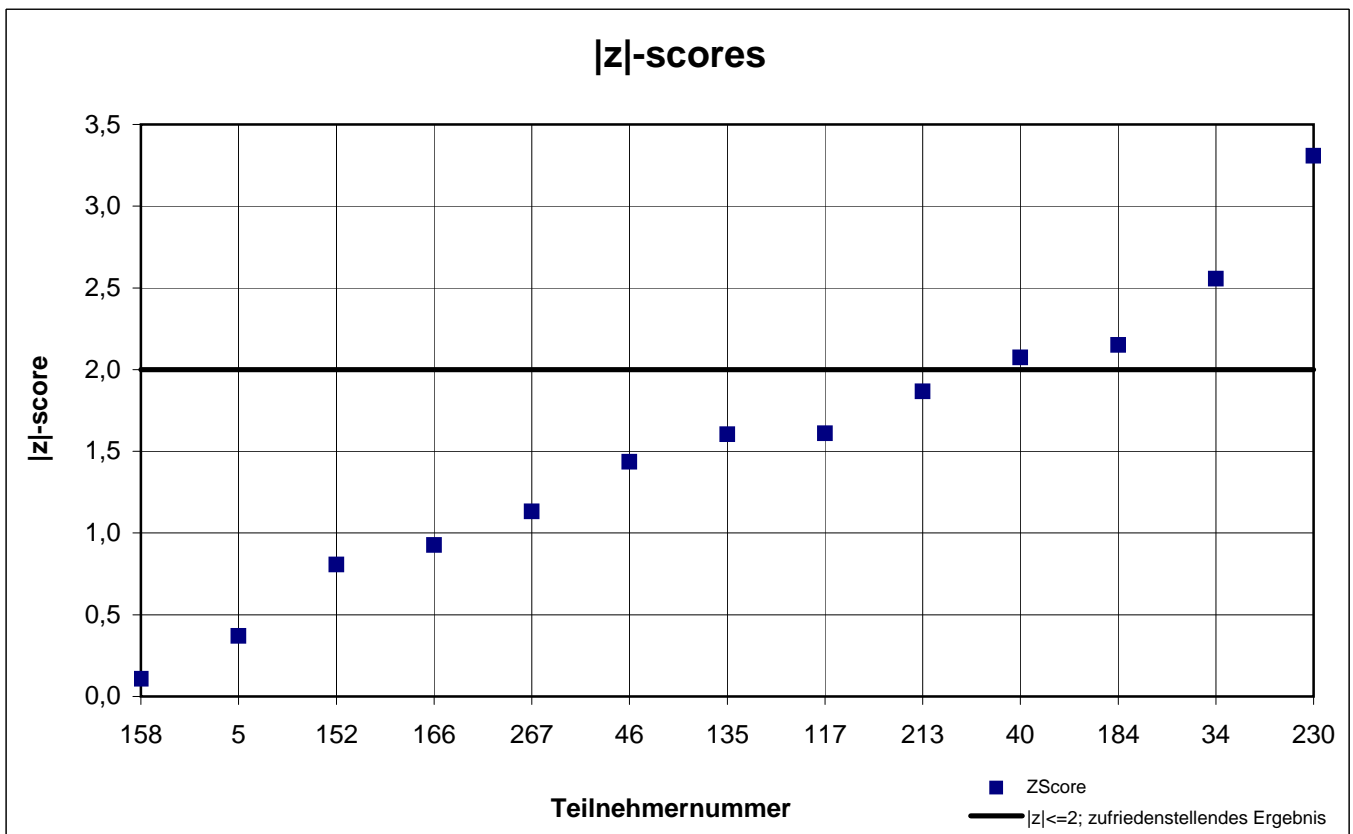
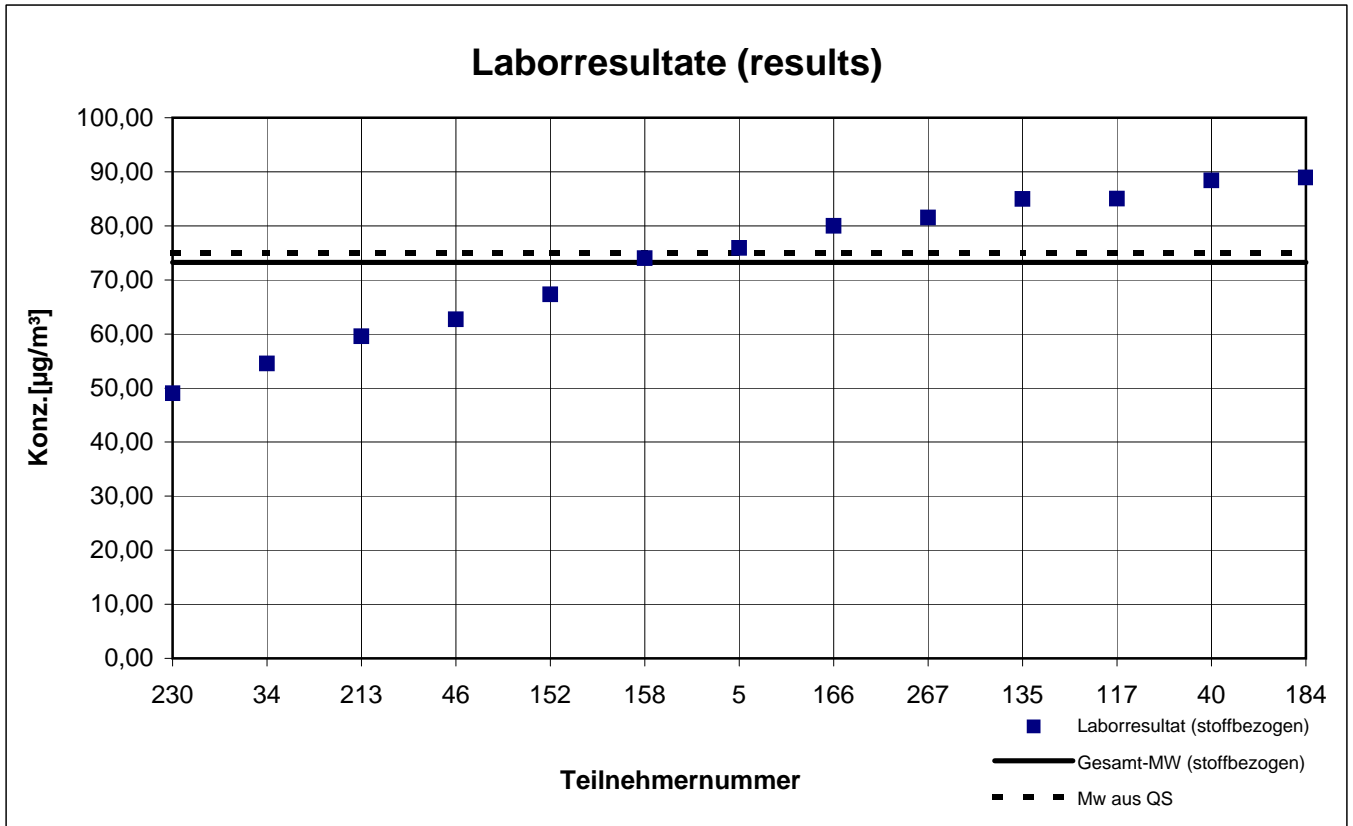
Probe 1 (sample 1)

n-Heptan



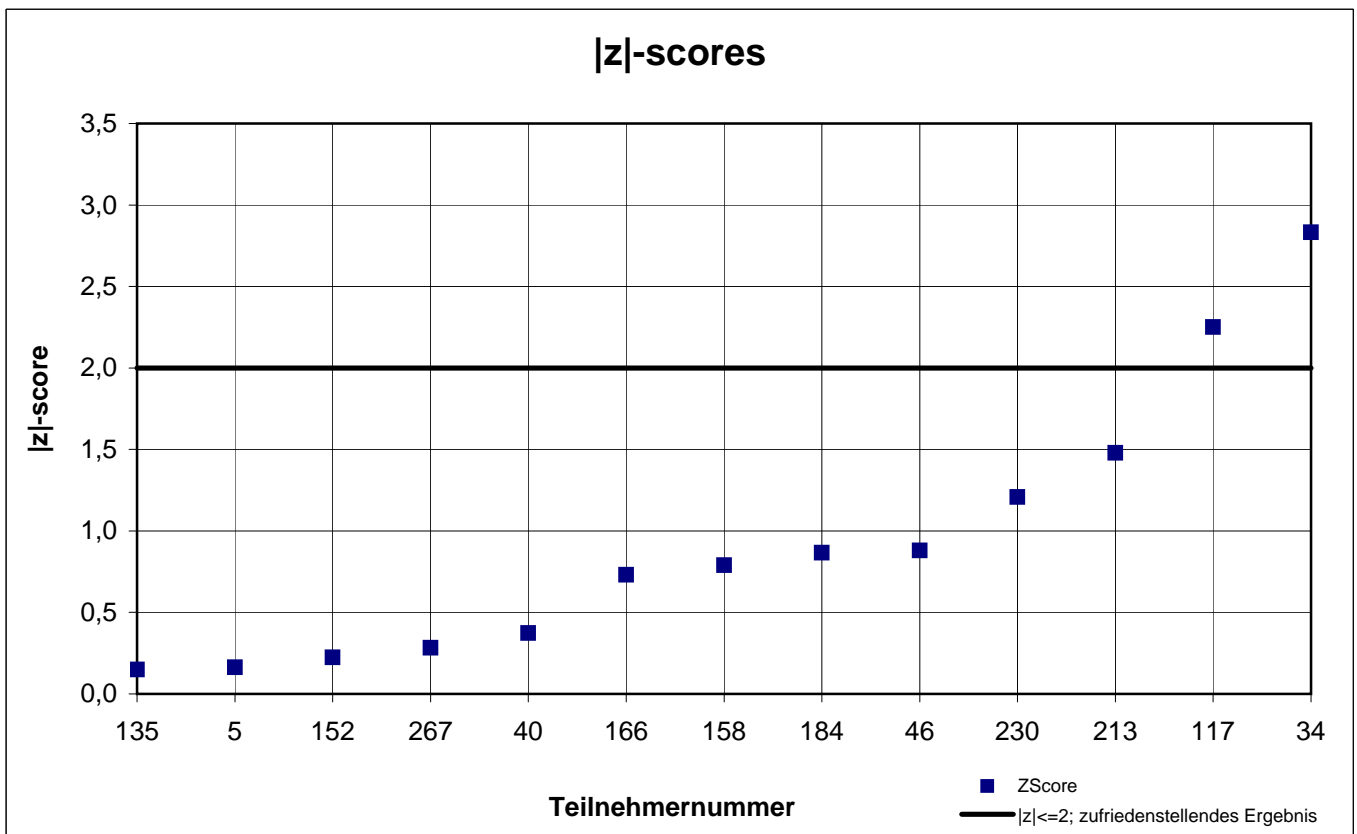
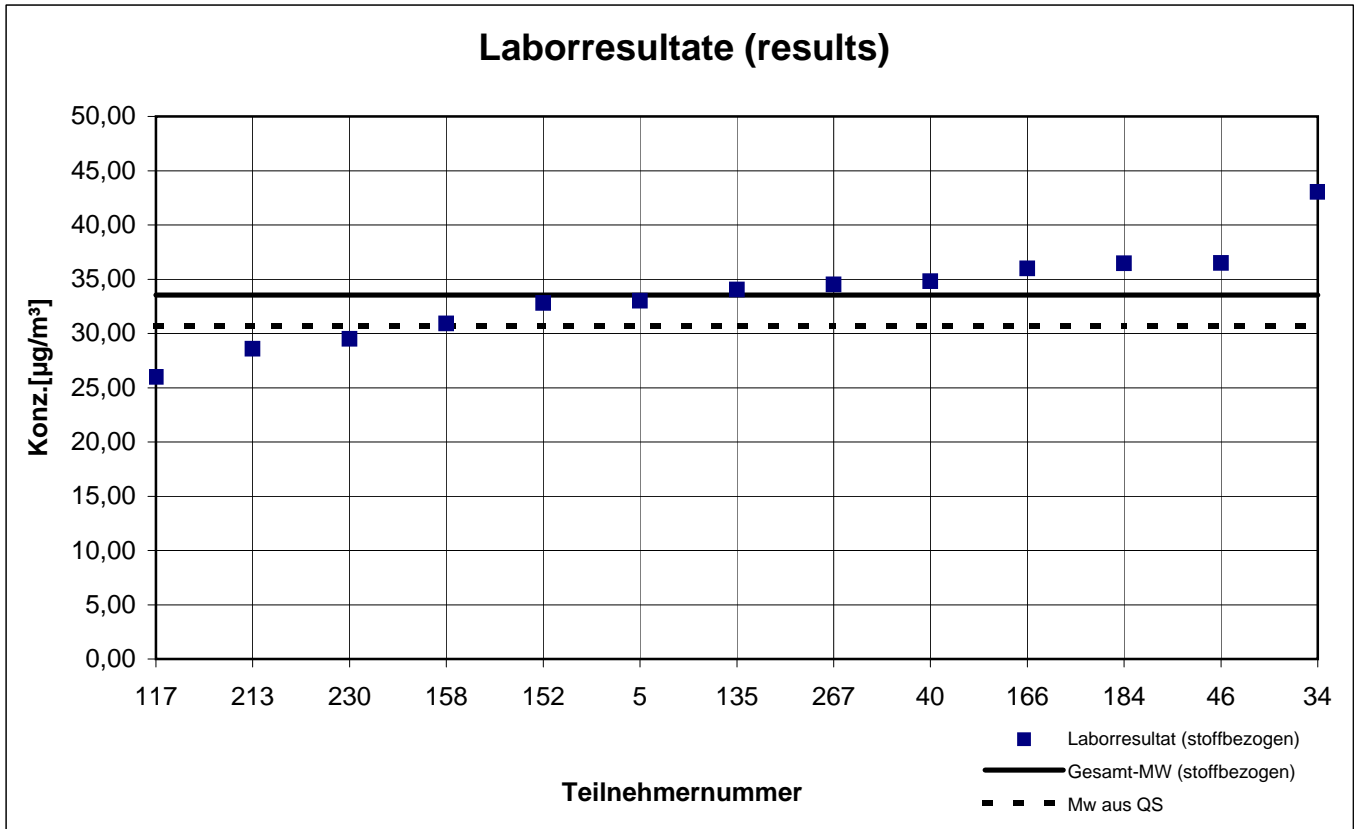
Probe 2 (sample 2)

Octamethylcyclotetrasiloxan



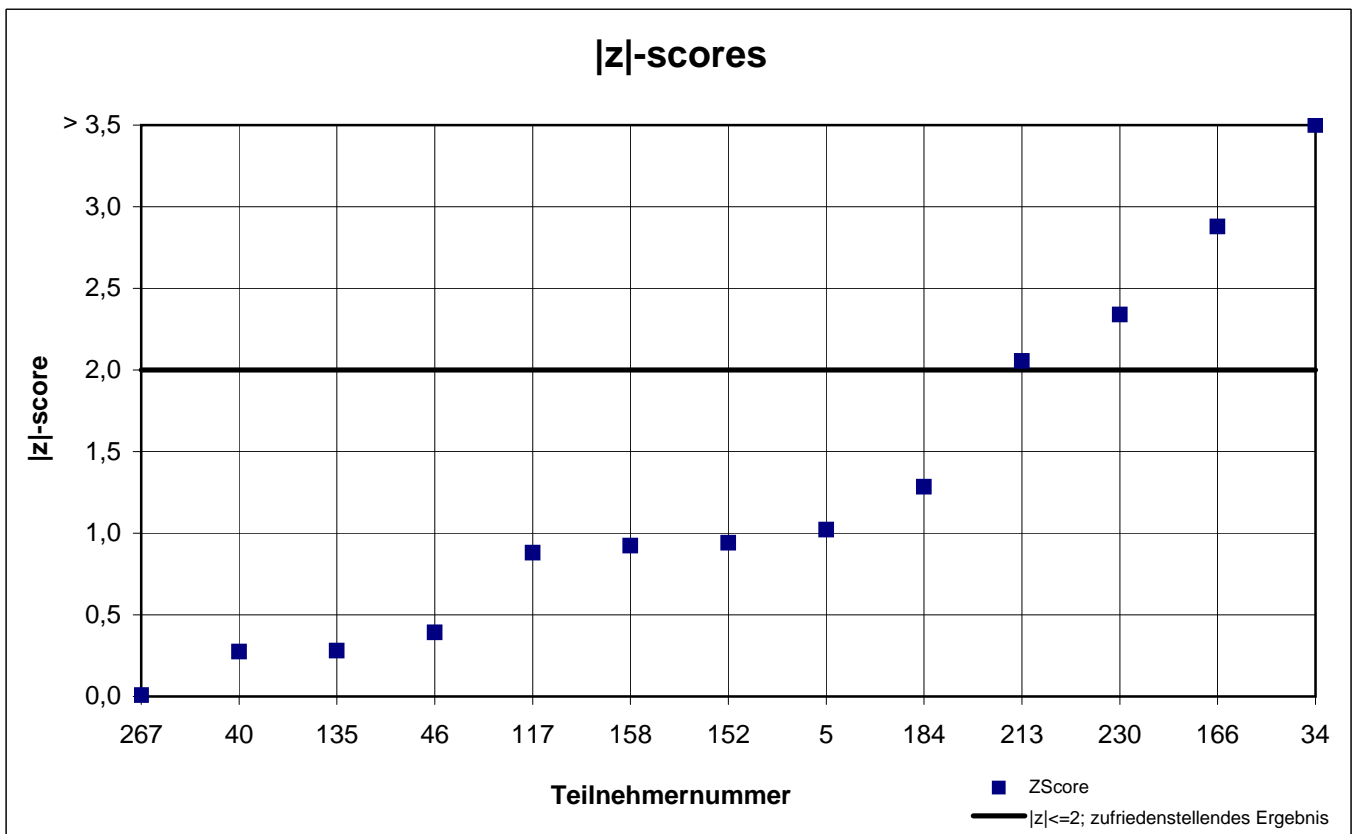
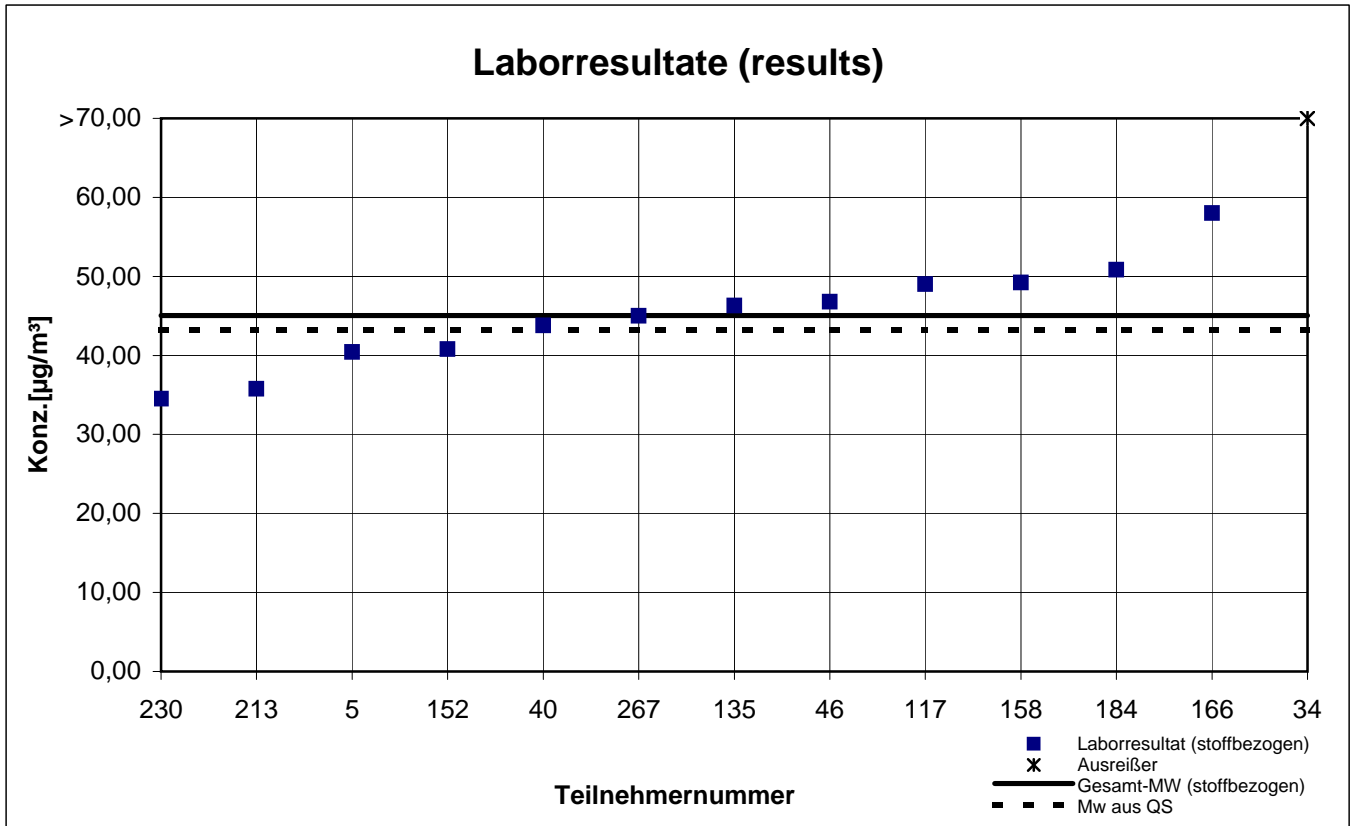
Probe 2 (sample 2)

p-Xylol



Probe 2 (sample 2)

R(+)-Limonen



Probe 2 (sample 2)

Toluol

